

# HydroTap Celsius Plus All-in-One (AIO)

Boiling/Chilled/Sparkling (BCS) 120V Product Spec Sheet



## HydroTap Celsius Plus All-in-One (AIO)

Form meets function with the HydroTap Celsius Plus All-in-One (AIO). Intended for installation over a sink in the kitchen or wet bar, the Celsius Plus AIO instantly dispenses filtered boiling, chilled and sparkling water, plus unfiltered hot & cold water. And it's all wrapped up in Zip Water's enduringly stylish design.

So whether you are looking to upgrade your home hydration or you want the convenience of cooking made easy, the HydroTap Celsius Plus AIO is the perfect tap to meet your needs. The Celsius Plus AIO is available in six luxury finishes from our classic chrome to our stylish brushed gold and gunmetal to complement any kitchen or wet bar.

## HydroTap Celsius Plus All-in-One - Available Finishes



Chrome



Brushed  
Chrome



Matte  
Black



Brushed  
Gold



Brushed  
Nickel



Gunmetal

## Product Order Codes for HydroTap Celsius Plus AIO Tap/Faucet (select one)

HydroTap Celsius Plus AIO BCS Tap/Faucet in Chrome	01045832
HydroTap Celsius Plus AIO BCS Tap/Faucet in Brushed Chrome	01045833
HydroTap Celsius Plus AIO BCS Tap/Faucet in Matte Black	01045834
HydroTap Celsius Plus AIO BCS Tap/Faucet in Brushed Gold	01045835
HydroTap Celsius Plus AIO BCS Tap/Faucet in Brushed Nickel	01045836
HydroTap Celsius Plus AIO BCS Tap/Faucet in Gunmetal	01045837

## Product Order Code for HydroTap BCS 120V Command Center

HydroTap BCS 120V Command Center	01043466
----------------------------------	----------

## Product Order Code for CO<sub>2</sub> and Regulator

2 x 1.5lb Beverage-Grade Carbon Dioxide (CO <sub>2</sub> ) Cylinder	01034347
CO <sub>2</sub> Regulator	01034349
1 x 5lb Beverage-Grade Carbon Dioxide (CO <sub>2</sub> ) Cylinder (optional upgrade - if space allows)	01034348

# HydroTap Celsius Plus All-in-One (AIO)

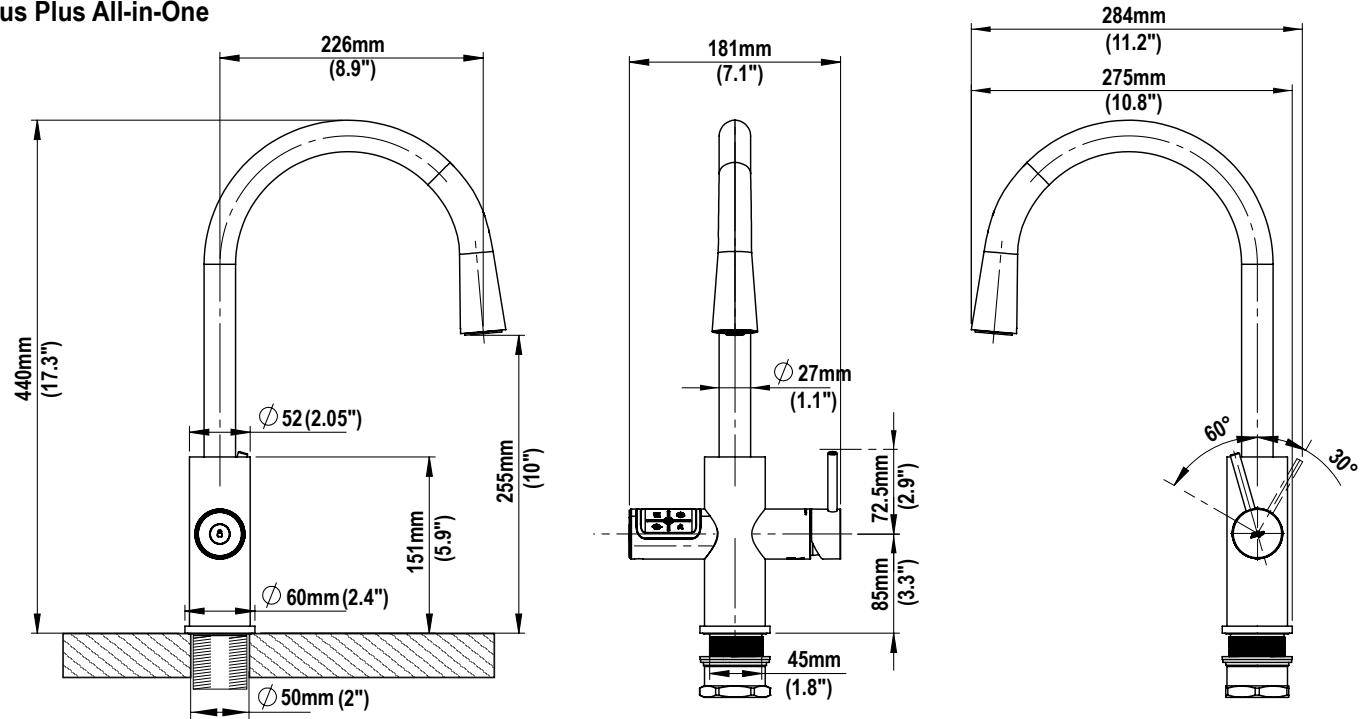
Boiling/Chilled/Sparkling (BCS) Product Spec Sheet



## HydroTap Celsius Plus AIO BCS 120V - Tap/Faucet Technical Specs

Style:	HydroTap Celsius Plus All-in-One (AIO) BCS 120V
Hole Size:	2" / 50mm
Tap Height:	17.3" / 440mm
Installation:	Over the sink as the primary faucet
Flow Rate:	Max 1.8gpm / 6.81 lpm
Sparkling Water Flow Rate	0.4 gpm / 1.51 lpm
Mixer Type:	Ceramic disc cartridge
Water outlets:	Installation requires both hot and cold water supplies
Clearance for handle:	Minimum distance from center hole to wall: 3 7/16" (88mm)

### Celsius Plus All-in-One



# HydroTap Celsius Plus All-in-One (AIO)

Boiling/Chilled/Sparkling (BCS) 120V Product Spec Sheet



## HydroTap Celsius Plus AIO BCS 120V - Command Center Technical Specs

<b>Style:</b>	HydroTap Celsius Plus All-in-One BCS 120V
<b>Water outlets:</b>	Installation requires both hot and cold water supplies
<b>Water Pressure:</b>	Min 37psi – Max 100psi (2.60 - 7.03kg/cm <sup>2</sup> ) with a minimum flow rate of 1 gpm (3.79lpm)
<b>Water Connection:</b>	2 x 1/2" BSP or 3/8" FPT compression (depending on manufacture date) with shut off valve is required within 3' (0.9m) of the installation
<b>Integral Water Values:</b>	All HydroTap systems are fitted with a Dual Check Valve and a 50psi (3.52kg/cm <sup>2</sup> ) Pressure Limiting Valve
<b>Water Supply Requirements:</b>	Potable drinking water supply
<b>Optimal Total Dissolved Solids (TDS) Range:</b>	TDS Min 50ppm – Max 150ppm
<b>Integral Water Filter:</b>	0.2 micron, 1 size - replace every 1,100 gallons / 4,163 liters or 12 months
<b>Power Rating:</b>	110-120V, 50-60Hz, 15 amp power supply with a NEMA 5-15 outlet
<b>Command Center Dimensions (WxDxH):</b>	13.3" x 18.2" x 13.1" / 339mm x 462mm x 333mm
<b>Minimum Air Gap:</b>	Minimum of 2" / 50mm clearance on left and right side and 8" / 200mm above
<b>Minimum Cabinet Size (Without Garbage Disposal):</b>	20" wide x 24" deep / 508mm wide x 610mm deep
<b>Minimum Cabinet Size (With Garbage Disposal):</b>	30" wide x 24" deep / 762 mm wide x 610mm deep When installing the HydroTap Celsius All-in-One BCS 120V in a cabinet with a garbage disposal, the cabinet must be at least 30" wide x 24" deep and the sink must have an off-centered drain to allow for the placement of the garbage disposal off to one side and the command center to the other.
<b>Maximum Hose Connection Length</b>	3' / 0.9m (tap to command center)
<b>Minimum Distance Needed for Installation</b>	15" / 381mm (interior wall to garbage disposal)
<b>Warranty:</b>	2 year Limited Warranty
<b>Compatible CO<sub>2</sub> Cylinder:</b>	Zip Water 1.5lb CO <sub>2</sub> or 5lb CO <sub>2</sub> (if space allows) with CGA-320 fitting
<b>CO<sub>2</sub> Operating Pressure:</b>	Min 39psi - Max 44psi / Min 2.74 - Max 3.09kg/cm <sup>2</sup>

# HydroTap Celsius Plus All-in-One (AIO)

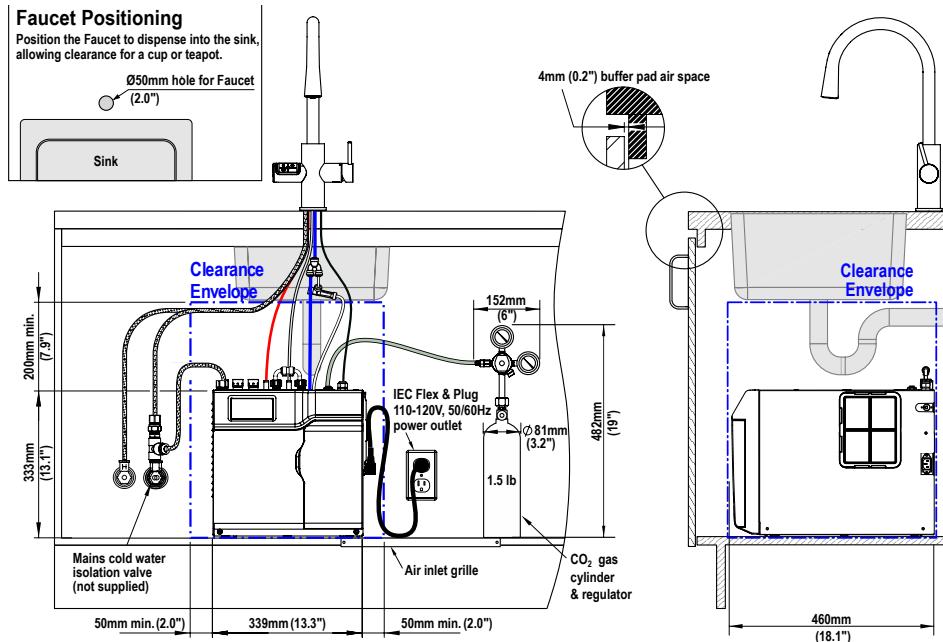
Boiling/Chilled/Sparkling (BCS) 120V Product Spec Sheet



## Installation Requirements

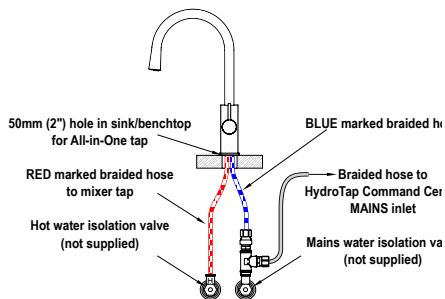
The HydroTap is a pump-driven system so the installation of the Tap must be within 3' (0.9m) of the base command center. Installation on most countertops is straightforward however, some stone countertops may require a specialized cutting service.

Installation and connection of your HydroTap must be carried out by a qualified person, observing all local, state, & federal regulations.



### Mains hot water supply installation

Hot and cold water supply required

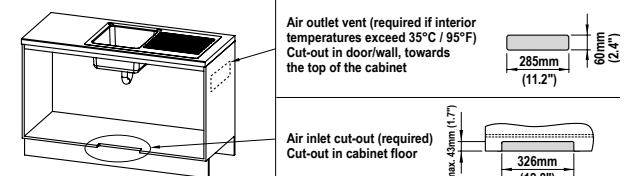
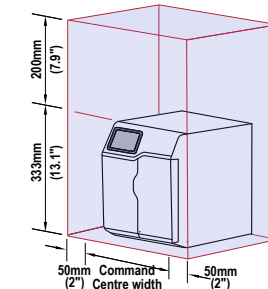


### Ventilation requirements

Contact your local service provider if ventilation is not suitable

#### Clearance envelope

Position the Faucet and the Command Centre as close together as possible.



Please call 1-833-233-2358 M-F 8am-7pm Central Time with questions.

# 1.5lb CO<sub>2</sub> Refillable Beverage-Grade Cylinder

Product Spec Sheet



## 1.5lb CO<sub>2</sub> Cylinder - Product Specs

<b>Product Order Code:</b>	01034347
<b>Product Description:</b>	2 x 1.5lb Beverage-Grade Carbon Dioxide Cylinder (regulator sold separately)
<b>CO<sub>2</sub> Capacity:</b>	Approximately 400 8oz cups (per canister)
<b>CO<sub>2</sub> Operating Pressure:</b>	Min 39psi - Max 43psi / Min 2.74 - Max 3.02kg/cm <sup>2</sup>
<b>Height (without regulator):</b>	Approximately 12" / 305mm
<b>Height (with regulator):</b>	Approximately 19" / 482mm
<b>Cylinder Diameter:</b>	Approximately 3.2" / 81mm
<b>Max Width (with regulator):</b>	Approximately 6" / 152mm
<b>Valve Type:</b>	CGA-320
<b>Storage Temperature:</b>	CO <sub>2</sub> should be stored out of direct sunlight. Max storage temperature is 120°F (48.8°C)



# 5lb CO<sub>2</sub> Refillable Beverage-Grade Cylinder

Product Spec Sheet



## 5lb CO<sub>2</sub> Cylinder - Product Specs

<b>Product Order Code:</b>	01034348
<b>Product Description:</b>	1 x 5lb Beverage-Grade Carbon Dioxide Cylinder (regulator sold separately)
<b>CO<sub>2</sub> Capacity:</b>	Approximately 1,200 8oz cups (per canister)
<b>CO<sub>2</sub> Operating Pressure:</b>	Min 39psi - Max 43psi / Min 2.74 - Max 3.02kg/cm <sup>2</sup>
<b>Height (without regulator):</b>	Approximately 18" / 457mm
<b>Height (with regulator):</b>	Approximately 19.5" / 495mm
<b>Cylinder Diameter:</b>	Approximately 5.5" / 140mm
<b>Max Width (with regulator):</b>	Approximately 10.5" / 267mm
<b>Valve Type:</b>	CGA-320
<b>Storage Temperature:</b>	CO <sub>2</sub> should be stored out of direct sunlight. Max storage temperature is 120°F (48.8°C)



# CO<sub>2</sub> Regulator

Product Spec Sheet



## CO<sub>2</sub> Regulator - Product Specs



<b>Product Order Code:</b>	01034349
<b>Product Description:</b>	CO <sub>2</sub> Regulator
<b>Compatible Products:</b>	Zip Water 1.5lb and 5lb CO <sub>2</sub> cylinders
<b>Height:</b>	Approximately 6" / 152mm
<b>Width:</b>	Approximately 7" / 178mm
<b>Depth:</b>	Approximately 4.3" / 109mm

