

Vacuum cleaner

User manual

VS20C95**** Series

- Before operating this unit, please read the instructions carefully.
- For indoor use only



SAMSUNG

Contents

Safety information	3	Operation	14
Important safety symbols	3	Installing the charging stand	14
State of California Proposition 65 Warning	3	Using the charging stand	15
General	4	Charging the battery	16
Vacuum cleaner	4	Inserting the battery	17
Maintenance	7	Ejecting the battery	17
Charging stand	8	Charging the additional battery	17
Battery	10	Using the buttons and display	18
		Using the accessories	19
Preparation	12	Maintenance	21
Accessories	12	Cleaning the vacuum cleaner	21
Parts overview	13		
		Appendix	27
		Notes and cautions	27
		Troubleshooting	32
		Product specification	34
		Warranty	35
		Warranty (CANADA)	37

Safety information

- Before operating the appliance, please read this manual thoroughly and retain it for your reference.
- Because the following operating instructions cover various models, the characteristics of your vacuum cleaner may differ slightly from those described in this manual.

Important safety symbols

WARNING

Indicates that a danger of death or serious injury exists.

CAUTION

Indicates that a risk of personal injury or material damage exists.

NOTE

Indicates that the following text contains additional important information.

State of California Proposition 65 Warning

WARNING

Cancer and Reproductive Harm - www.P65Warnings.ca.gov.



**For battery recycling go to call2recycle.org
or call 1-800-822-8837**

Safety information

General

Failure to meet these requirements could cause damage to the internal parts of the vacuum and void your warranty.

- Read all instructions carefully. Before plug the station in, make sure that the voltage of your electricity supply is the same as that indicated on the rating plate at the bottom of the station.
- This appliance is not intended for use by persons (including children) with reduced physical, sensory or mental capabilities, or lack of experience and knowledge, unless they have been given supervision or instruction concerning use of the appliance by a person responsible for their safety. Children should not clean or perform maintenance on the vacuum without adult supervision.
- Do not allow the vacuum cleaner to run unattended at any time.
- This product is intended for household use only. (Do not use this product for other than its intended purposes.)
- Do not allow children to ride on or play with the product.
 - An injury or product damage may occur.

Vacuum cleaner

- When assembling the vacuum, be careful not to catch your fingers or hands in the movement fold of the handle.
- Do not use the vacuum cleaner on a wet rug or floor.

-
- Do not use the product at the following places;
 - In a place where a burning candle or a desk lamp is placed on the floor.
 - In a place where heaters are turned on or unextinguished embers exist in an unattended fireplace or an ashtray etc.
 - In a place where there are combustible materials such as oil paint, paint thinner, mothproofing substances, gasoline, alcohol, thinner, ashtrays with unextinguished cigarettes, etc.
 - In a closed place filled with explosive or toxic vapor.
 - Do not pick up the following things. Abnormal operation or product damage may occur.
 - A match or unextinguished ashes or cigarettes
 - Hard or sharp objects
 - Toxic materials (chlorine bleach, ammonia, drain cleaner etc.)
 - Liquid such as water or beverage or pet's waste
 - Chalk powder
 - If there is a gas leak or combustible spray such as a dust remover is used, do not touch the power outlet and open the window for ventilation.
 - An explosion or fire may occur.
 - If the product makes a strange sound or emits a smell or smoke, turn off the product immediately, and then contact a Samsung service center.
 - Electric shock or fire may occur.
 - When using the vacuum cleaner, be careful not to hurt yourself on the moving or spinning parts.
 - Keep your body parts (Hair, hands, etc.) from the spin brush or the spin disk.

Safety information

- When cleaning the wall or ceiling, you should use both hands.
 - If you clean with one hand, you can damage your wrist or drop the vacuum and cause an injury or damage the vacuum.
- Do not use the vacuum cleaner on objects that can be easily scratched (monitors, stainless steel appliances, etc.).
- Sometimes the wheel of a brush can scratch the floor. Before using the vacuum cleaner, check the wheels of the brush.
 - If there is foreign matter on the wheel of the brush which cannot be removed easily, contact a Samsung service center.
- When the spin brush inside a brush is working, do not touch the brush.
 - Otherwise, your hand can be caught and it may cause an injury.
- Do not use the vacuum cleaner in direct sunlight or high heat.
- If excessive force is applied to an accessory with motor or foreign matter is caught in the spin brush (or spin disk), the accessory may stop working to protect the motor or the product. Turn the vacuum cleaner off, remove the foreign matter, and then turn it back on.
- Static electricity may occur depending on the humidity, temperature, or floor material, etc. in your home. If it happens repeatedly, contact a Samsung service center.
- Do not use Pet Tool+ in a small area for a long time and do not let Pet Tool+ keep spinning in one place.
 - Damage may occur if used on sensitive materials
- Do not use Combination Tool on hard materials such as leather or wood while bristles are not extended.

Maintenance

- While using or after using the vacuum cleaner, you should lay the vacuum cleaner down or place it on the charging stand to store.
 - The product may fall and an injury and severe product damage occur. In addition, you may not be compensated for the damage.
- Do not store the vacuum cleaner inside a car.
- Before removing foreign matter inside the product, turn off the product first.
 - If the product is on while you are removing the foreign matter, you can hurt yourself or damage the product.
- When cleaning the exterior of the product, turn off the product first and then wipe it with a dry towel. Do not spray water directly onto the product or wipe it with volatile materials such as benzene, thinner, or alcohol.
 - If water gets into the product and an error occurs, turn off the product and contact a Samsung service center.
- When cleaning the washable parts, do not use alkaline detergent, acid, industrial detergent, air freshener, acetic acid, etc.
 - Product damage such as plastic breakage, deformation, discoloration, printing deterioration, etc. may occur.

Safety information

Washable Parts		Dustbin, Washable Micro Filter, Fine Dust Filter, Metal Mesh Grille Filter, dry cloth
Acceptable detergent	Neutral	Dish washing detergent
Prohibited detergent	Alkaline	Lox, mold cleaner, etc.
	Acid	Paraffin oil, an emulsifier, etc.
	Industrial cleaners	NV-I, PB-I, Opti, alcohol, acetone, benzene, thinner, etc.
	Air freshener	Jet spray air fresheners (coffee flavor, herb, etc.)
	Oils	Animal oils, vegetable oils
	Etc.	Edible acetic acid, vinegar, glacial acetic acid, etc.

- Storing the product in sunlight for long hours may cause parts of the product to deform or discolor. Therefore, store the product in the shade.
- After cleaning the dustbin, Metal Mesh Grille Filter, or Washable Micro Filter with water, dry them in the shade.
 - When heat is applied, part deformation may occur.

Charging stand

- Do not pull or carry by the cord, use the cord as a handle, close a door on the cord, or pull the cord around sharp edges or corners. Keep the cord away from heated surfaces.
- Do not unplug by pulling on the cord. To unplug, grasp the plug, not the cord.
- Do not pull the power cord and do not touch the power plug with wet hands.
 - Electric shock or fire may occur.
- Do not use extension cords or outlets with inadequately rated current.

-
- If there is dust, water, etc. on a pin or contact point of the power plug pin, wipe them carefully.
 - Abnormal operation or electric shock may occur.
 - Do not use a damaged power plug, power cord, or loose power outlet.
 - Electric shock or fire may occur.
 - Unplug the charging stand from the outlet before servicing.
 - Do not expose the charging stand to high temperatures or allow moisture or humidity of any kind to come into contact with the charging stand.
 - Do not plug the charging stand into a power source with the incorrect voltage. Do not plug the charging stand into a multi-plug outlet or power strip.
 - Electric shock or fire may occur.
 - If the power cord is damaged, have a Samsung authorized service center replace the power cord with a new power cord.
 - Electric shock or fire may occur.
 - Make sure that the charging terminals of the vacuum cleaner and the charging stand do not come into contact with a conductor such as a bracelet, watch, metal rod, nail, etc.
 - Product malfunction or electric shock may occur.
 - As the charging stand is designed for the use of Samsung Jet cordless vacuum cleaner only, do not use the charging stand for other electronic appliances and other purposes.
 - Severe damage to the charging stand or fire may occur.
 - Do not allow children to cling to or push the charging stand.
 - Personal injury, product and floor damage may occur.
 - Do not charge the product near a window, heater, toilet, bathroom, etc.

Safety information

- Do not attempt to open the charging stand. Repairs should be only carried out by a qualified Samsung service center.
- Injury or product malfunction from incorrect installation of the charging stand may not be compensated.
- Do not bend the power cord with excessive force or put heavy objects on the power cord.
 - Electric shock or fire may occur.
- Before unplugging or plugging in the charging stand, turn off the vacuum cleaner and make sure that the pins of the power plug do not come into contact with your hands.
 - Fire or electric shock may occur.

Battery

- Do not mutilate or incinerate batteries as they will explode at high temperatures.
- Do not drop or strike the battery or subject it to a sudden shock.
- Do not disassemble the battery and make sure that you do not create a short circuit across the plus (+) and minus (-) terminals.
- As the battery is manufactured only for this product, do not use the battery for other electronic appliances or other purposes.
- When you purchase a new battery, make sure to check the model name (VCA-SBTA95) and the genuine **SAMSUNG** logo.
 - Contact your nearest Samsung Electronics retailer or Samsung service center to purchase any consumable accessories.

-
- Leaks from battery cells can occur under extreme usage or temperature conditions. If the liquid gets on your skin, wash the affected area quickly with water. If the liquid gets into your eyes, flush them immediately with clean water for a minimum of 10 minutes. Seek medical attention.
 - When attaching the battery to the vacuum cleaner, insert it until you hear a click. This assures that the battery is firmly attached.
 - Otherwise, the battery may fall and could cause product damage or injury.
 - If you are not going to use the vacuum cleaner for a long period of time or you are going to be away from home for a long period of time, unplug the charging stand, and then detach the battery from the vacuum cleaner. When the battery is not being charged and not being used, it will slowly discharge.
 - To protect the motor and the battery, the product may not operate when the temperature is lower than 5 °C or higher than 45 °C.
 - Dispose of the dead battery in compliance with the local regulations.

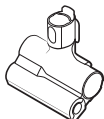
Preparation

Accessories

The accessories with the ' * ' mark may differ depending on the models.



Telescopic pipe



Pet Tool+



Combination Tool



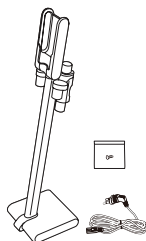
Extension Crevice Tool



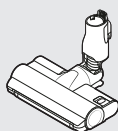
Flexible Tool



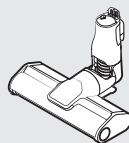
User manual



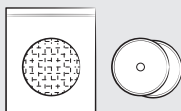
Charging stand



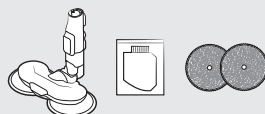
* Jet Dual Brush



* Slim LED Brush



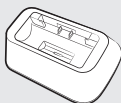
* Disposable wet pads /
Attachable pad



* Spray Spinning Sweeper /
Water tank / Reusable wet pads



* Battery



* Battery cradle

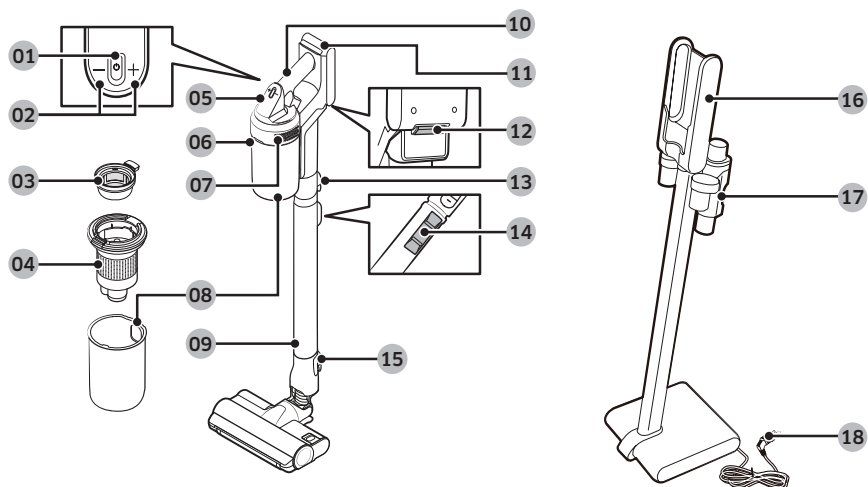


* Battery charger

* Optional

- VS20C95**** model: The additional battery and charger can be purchased separately.
- The Spray Spinning Sweeper includes reusable wet pads and disposable wet pads.

Parts overview



- 01 Power (⏻) button
- 02 Suction power control buttons
- 03 Washable Micro Filter
- 04 Metal Mesh Grille Filter
- 05 Display
- 06 Dustbin release button
- 07 Fine Dust Filter
- 08 Dustbin
- 09 Adjustable pipe

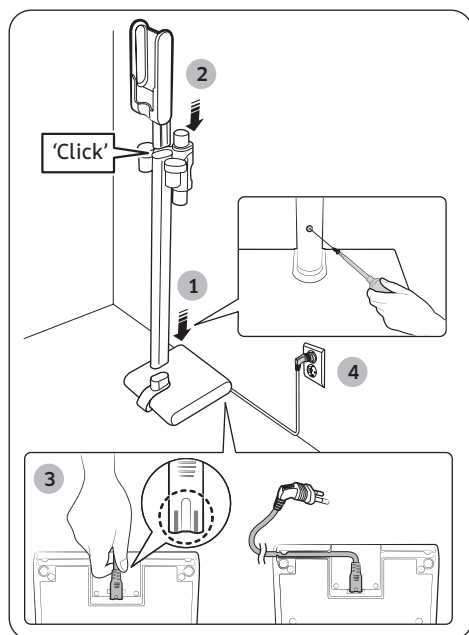
- 10 Handle
- 11 Battery level indicator
- 12 Battery release button
- 13 Pipe release button
- 14 Pipe length adjustment button
- 15 Brush release button
- 16 Vacuum charging part
- 17 Accessory holder
- 18 Power cord

NOTE

The wave pattern on the exterior of the product is a natural appearance due to the use of pearl plastic materials and its pearl distribution. In addition, the shining pearl used in the material gives an excellent gloss coating, no extra coating necessary.

Operation

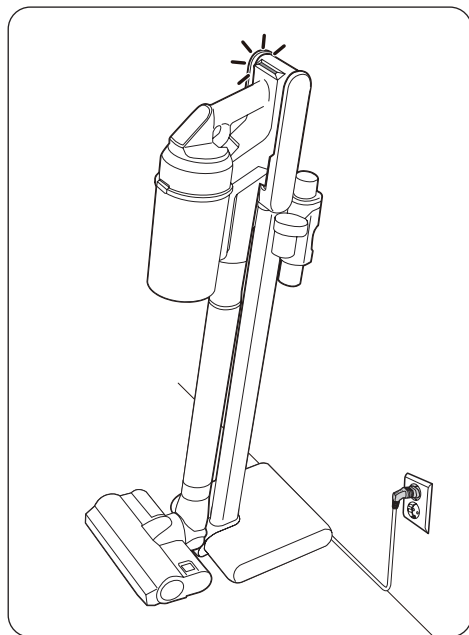
Installing the charging stand



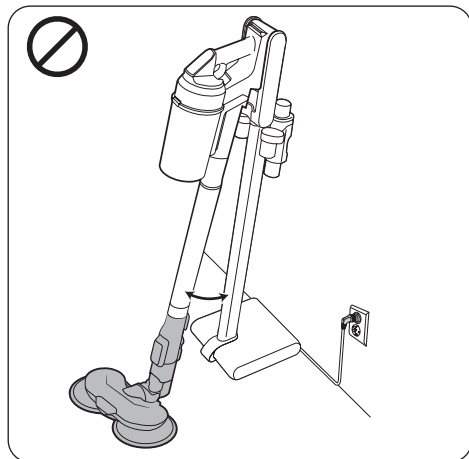
1. Place the stand pipe on the bottom support, and screw the pieces together using the included small screw.
 - Make sure the pieces are aligned correctly and push it in firmly so that the screw hole is aligned.
2. Insert the vacuum charging part at the top of the stand pipe.
 - Do not disassemble it after attaching it.
3. Connect the power cord to the rear of the charging stand.
 - Hold the connection part of the cord and push it onto the connection pins firmly until the gray lines on the tip of the cord are not visible.
 - To make it easier to place the stand directly against a wall, insert the cord into one of the grooves on the bottom of the bottom support.
4. Plug in the charging stand.

Using the charging stand

Charging



- Make sure the back of the battery is correctly placed onto the vacuum charging part.
- Check if the battery level indicator is displayed while charging.
- The battery level indicator blinks while charging. When charging is complete, the blinking stops and the light level dims.

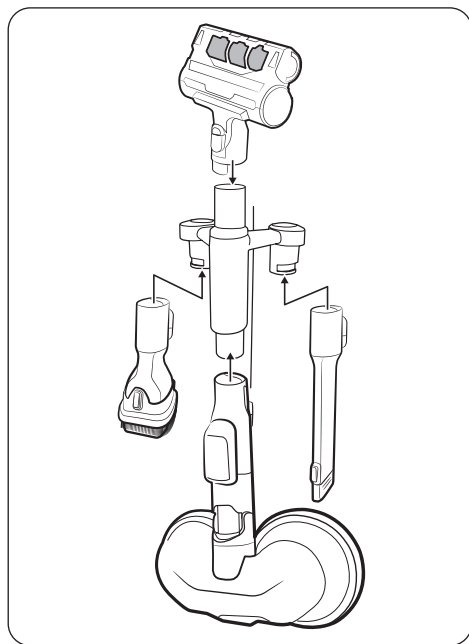


NOTE

You cannot properly mount or charge the vacuum cleaner on the charging stand if the Spray Spinning Sweeper is attached to the vacuum cleaner.

Operation

Storing the accessories



- When accessories are disassembled to be stored, dust may fall from the suction part of the vacuum cleaner.
- After cleaning, shorten the pipe length and operate in MAX mode for 10 seconds.

Storing the Spray Spinning Sweeper

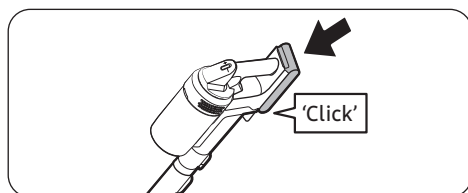
When the brush holder is connected to the charging stand, the Spray Spinning Sweeper can also be stored at the charging stand.

- Do not connect the mini motorized tool to the brush holder, or it may get damaged.
- Clean and dry the wet pad brush pads before putting them away. When stored near a wall, the pads may touch the wall and get it dirty if they are not completely clean and dry.
- When disconnecting the brush holder, press the 2 release buttons on the holder.

Charging the battery

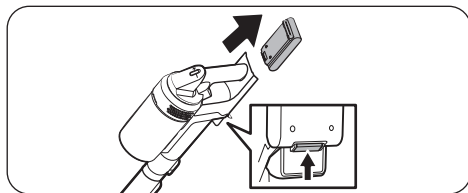
- When the battery level indicator turns red or the '**Low battery**' message appears on the display, charge the battery.
- You cannot use the vacuum cleaner while charging.
- Make sure the back of the battery is correctly placed onto the vacuum charging part.
- Check that the battery level indicator is displayed while charging.
- When charging starts, the battery level indicator turns on (red, orange, or yellow depending on charging progress), it rises gradually, and changes to green when the charging is complete.

Inserting the battery



Push the battery to the end until you hear it click.

Ejecting the battery

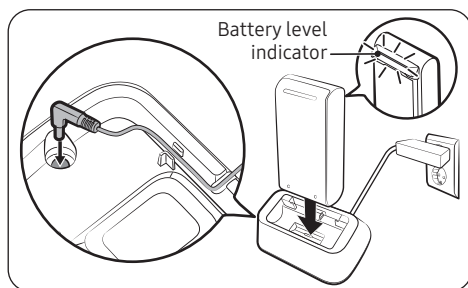


Press the battery release button at the rear of the handle to eject the battery.

⚠ CAUTION

- Before ejecting the battery, the vacuum cleaner must be turned off.
 - The vacuum cleaner may malfunction if you eject the battery forcibly from the operating vacuum cleaner.
- Be careful not to drop the battery. If you do, you can injure yourself or damage the battery.

Charging the additional battery

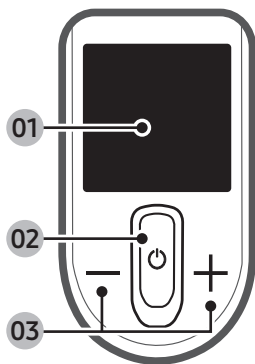


Charge the additional battery on the battery cradle.

- Firmly push the battery onto the battery cradle.
- Battery level indicator turns on and changes color to red, orange, and yellow as the battery charges. The battery level indicator will turn green when the battery is fully charged.

Operation

Using the buttons and display



01 Display

- Displays the current mode ('MIN, MID, MAX, JET, or WET') or the alert message.

02 Power (⏻)

- Press this button to turn on or off the vacuum cleaner.
- When you turn on the power, the vacuum cleaner starts in the 'MID' mode.
- If you assemble the Spray Spinning Sweeper, the vacuum cleaner starts in the 'WET' mode.

03 Suction power control (+ / -)

- You can change the suction power mode ('MIN, MID, MAX, or JET').
- In the 'WET' mode, press the + button to spray water once or press and hold the + button to spray water for up to 2 seconds.
- Press and hold the + button for 3 seconds to enter or exit the language setting. Press the + or - button to select a language.
- While the vacuum cleaner is on the charging stand, press and hold the + button for 5 seconds to enable or disable the Energy Saving mode.

NOTE

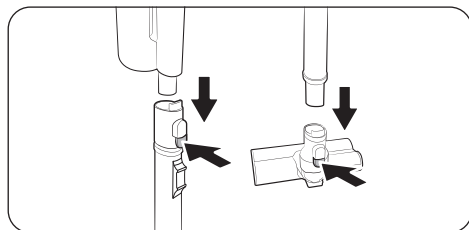
- Only the + button works when the vacuum cleaner is in the 'WET' mode.
- You cannot enter the language settings when the vacuum cleaner is in the 'WET' mode.
- The Energy Saving mode is automatically disabled if you use the vacuum cleaner.
- The brush may cling to the floor or does not turn properly depending on the floor material (a carpet, a mat, bedding, etc.). If such a problem occurs, change the suction power mode to 'MIN or MID'.

Alert messages

Message	Explanation
Low battery	Displays when battery is low.
Object stuck in brush/tool	Error displays when something is caught in the brush or tool.
Filter not inserted	Error displays when Micro Filter is missing.
Clogged	Error displays when the vacuum cleaner is clogged.
Check brush, tool, or filter	Alerts the user to check the brush, tool, or filter in order to solve the clogging error.
Clean Micro filter	Alerts and recommends the user to regularly check and wash the Micro Filter. (Refer to the 'Cleaning the vacuum cleaner' section.)
Energy Saving on	Displays when the Energy Saving mode is on.
Energy Saving off	Displays when the Energy Saving mode is off.

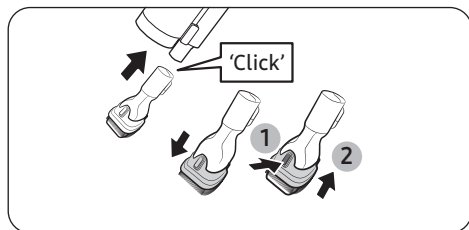
Using the accessories

Detaching the accessories



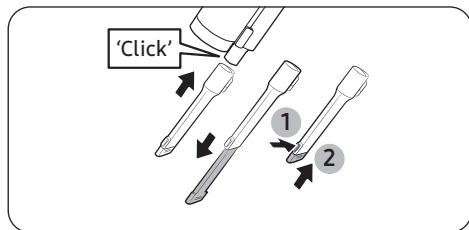
- To detach the accessories, press the release button on the back of each accessory.
- Before detaching the accessories, operate the vacuum cleaner in the '**MAX**' mode for 10 seconds to prevent any foreign matter remains inside the accessory.

Combination Tool



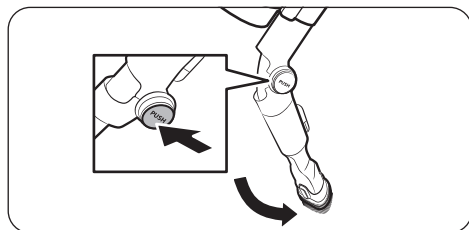
Use to remove dust from curtains, furniture, sofas, etc.

Extension Crevice Tool



Use to remove dust in grooves of window frames, narrow gaps, corners, etc.

Flexible Tool



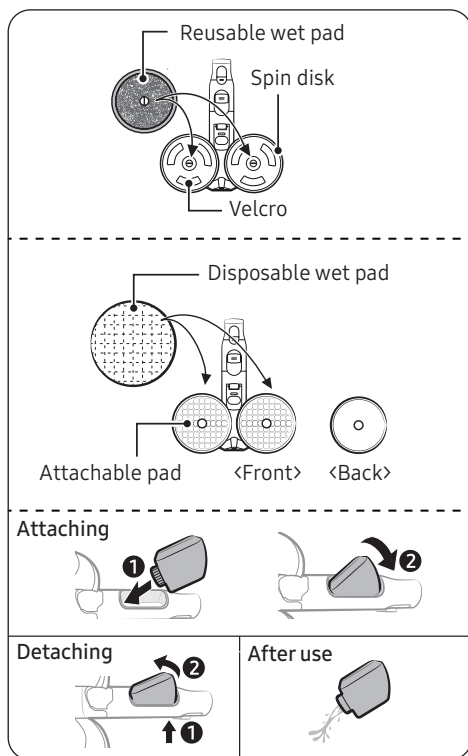
Use to clean hard to reach places such as upper or rear parts of furniture or ceilings.

NOTE

You can connect the Combination Tool or the Extension Crevice Tool to use with the Flexible Tool.

Operation

Spray Spinning Sweeper



Use to clean a wood and linoleum floor with a wet pad.

- The Spray Spinning Sweeper does not have a dust suction function.

Using the reusable wet pad

- When attaching the wet pad, make sure the pad is in the center of the spin disk.

Using the disposable wet pad

- Attach the disposable wet pad to the front side (Velcro side) of the attachable pad on the spin disk.
 - If you use the disposable wet pad without the attachable pad, cleaning performance can be degraded.
- After using the disposable wet pad, discard the pad.

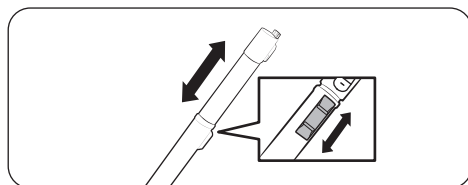
Detaching or attaching the water tank

- Press the lower part of the water tank to detach.
- When attaching the water tank, insert the front end first.

NOTE

- Do not use groundwater or polluted water.
- When using the Spray Spinning Sweeper for the first time, the air in the internal pump and the tube may cause to delay in spraying water. Press the + button repeatedly.

Adjusting the pipe length

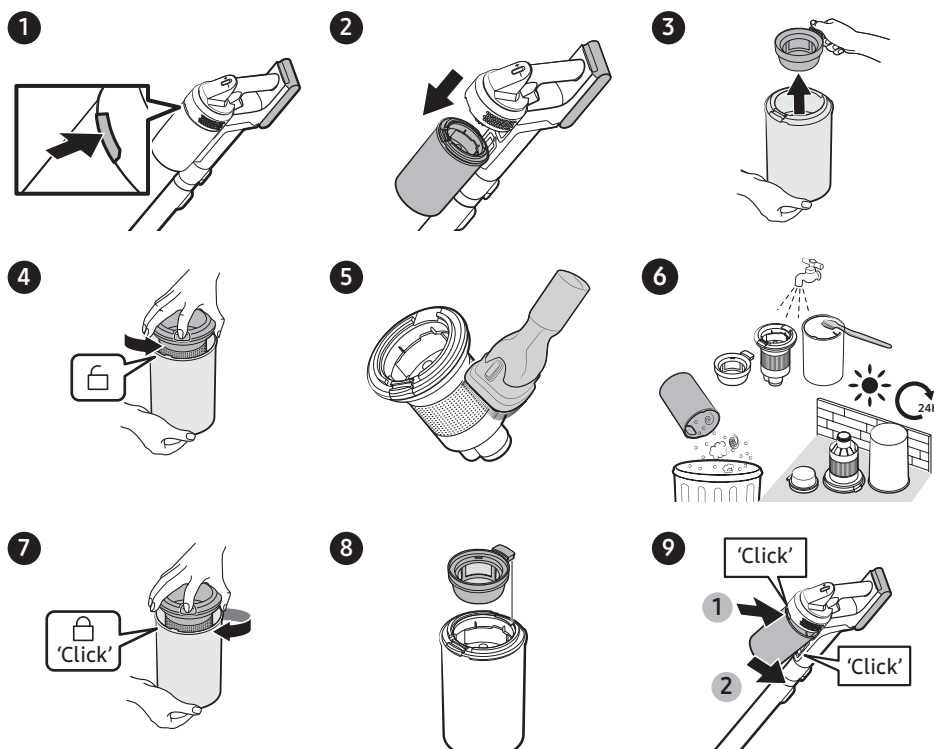


Press the pipe length adjustment button to lengthen or shorten the Telescopic Pipe.

Maintenance

Cleaning the vacuum cleaner

Dustbin/Washable Micro Filter



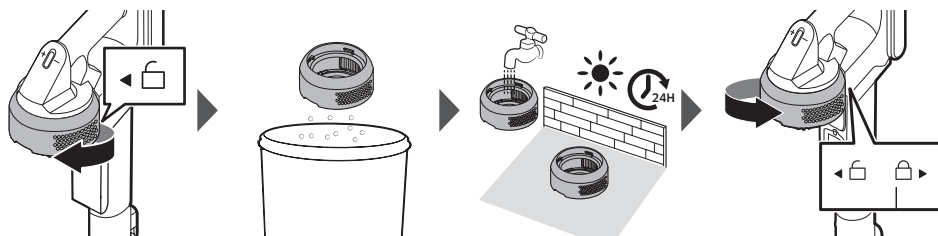
⚠ CAUTION

- After cleaning the dustbin and Washable Micro Filter with water, you should dry them completely in the shade for more than 24 hours before use.
 - When heat is applied, part deformation may occur.
 - If the filter is not dried completely before being used, it can cause an odor.
- If the dustbin or the filter is clogged, the vacuum cleaner may stop its operation due to the overheating prevention device of the motor.
 - Clean the dustbin or the filters and then operate the vacuum cleaner again.

Maintenance

Fine Dust Filter

Make sure to turn off the product before cleaning the filter.

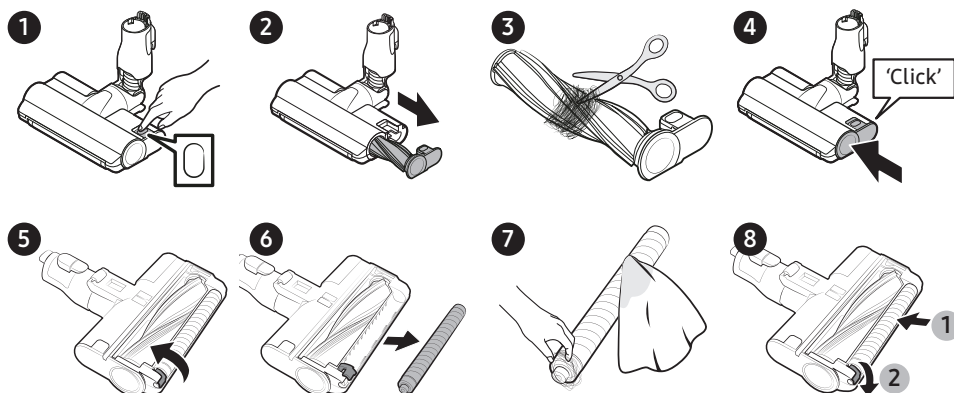


- Twist and pull off the Fine Dust Filter, and tap it gently to remove the dust.
- Wash the filter with running water once a month to maintain the best performance of the filter.
- After cleaning, dry it completely for more than 24 hours in the shade before use.
- For assembly, turn it counterclockwise until the line under the lock image is not visible.

NOTE

- Do not use detergent or tool when washing the filter.
- Do not dry with heat.

Jet Dual Brush

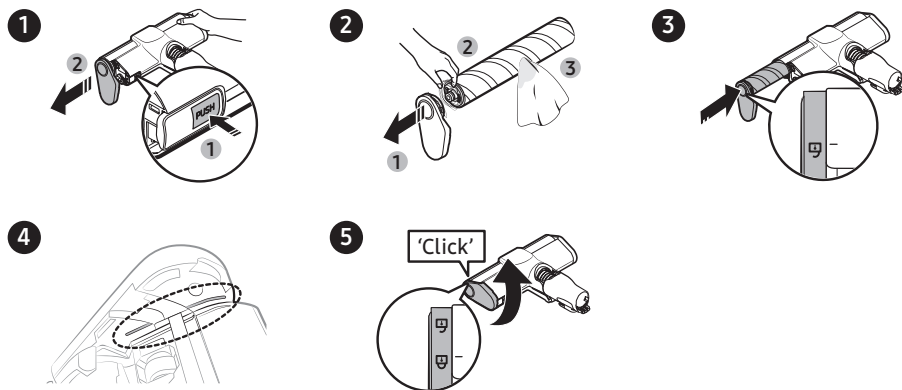


If the foreign matter is not removed, use scissors to remove it.

CAUTION

- If a cloth or other foreign matter is vacuumed up and tangled with the spin brush, the spin brush will stop working to protect the brush motor. After cleaning the brush, turn the power off and then on again.
- If the brush does not work after cleaning, turn the power off and then on again.
- When cleaning the brush, be careful not to catch your fingers in the folding parts of the brush.

Slim LED Brush



⚠ CAUTION

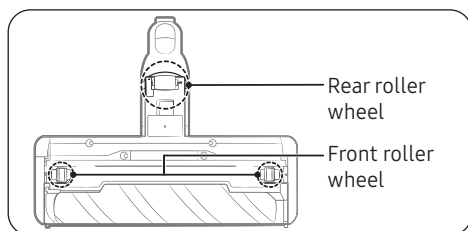
- Do not clean the brush with water.
- When foreign matter remains on the brush, remove it with a wet tissue or a dry cloth.

📄 NOTE

- If the spin brush does not work after cleaning the Slim LED Brush, the overheating prevention device of the motor may have been enabled. Wait 30 minutes or more to cool the motor before operating it again.
- When removing residual debris with a wet tissue, rub the spin brush gently to avoid compressing it.
 - To prevent the bristles on the spin brush from being compressed and causing unwanted vibration, dry the spin brush vertically on the floor.
- Properly insert the spin brush to its slot.

Maintenance

Slim LED Brush roller wheels



Use a small screwdriver to disassemble the front and rear roller wheels.

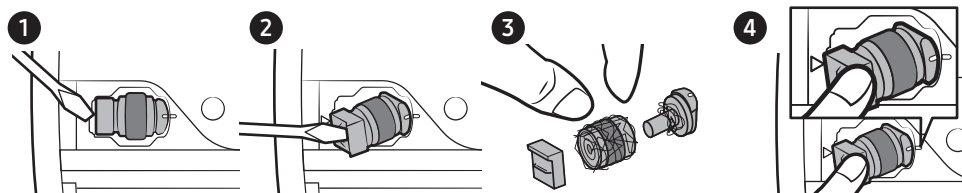
NOTE

Tools required for disassembly. Flat head screwdriver (3 mm or less in width), Phillips screwdriver, prying tool.

CAUTION

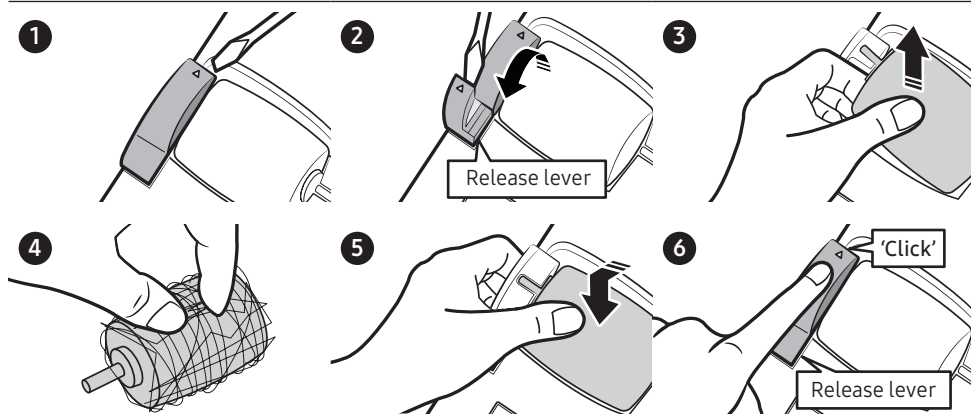
- For your safety, wear gloves before disassembling.
- You may damage the product if you use tools that are wider or thicker than the gaps allowed for disassembly.
- Keep the detached front and rear roller wheels out of children's reach. Beware of detached front and rear roller wheels as they can be a choking hazard.
- Be careful not to injure your hands or other body parts when using the tool.

Front roller wheel



- Disassemble the front roller wheels and remove the tangled foreign matter. Then, reassemble the wheels.
- Align the line marked on the wheel to the line on the body of the brush, and then insert it back into its place.

Rear roller wheel



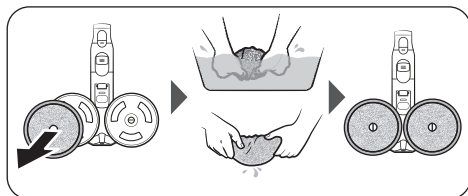
- Lift the release lever to detach the rear roller wheel.
- Detach the rear roller wheel and remove the tangled foreign matter. Then, reassemble the wheel.
- Insert the rear roller wheel into its place, and then press the release lever until you hear a click.

CAUTION

Be careful not to damage the release lever with a screwdriver. There is a chance of damaging the release lever if you apply excessive force to lift the release lever or twist the screwdriver while it is inserted into the gap.

Maintenance

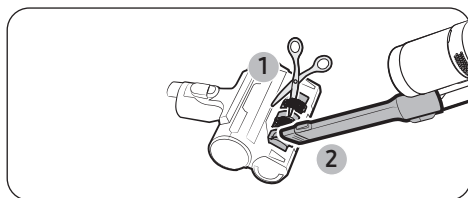
Spray Spinning Sweeper



NOTE

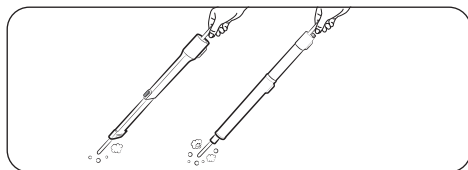
If the spin disk does not work after cleaning the Spray Spinning Sweeper, the overheating prevention device of the motor may have been enabled. Wait 30 minutes or more to cool the motor and operate again.

Pet Tool+



Cut the tangled hair or fur with scissors, and then use a vacuum cleaner to suck up the pieces.

Extension Crevice Tool / Telescopic Pipe



Insert a long thin stick and rotate several times to clean the Extension Crevice Tool or the Telescopic Pipe.

Appendix

Notes and cautions

Installation

CAUTION

- Do not install the product near water, in an area with excessive moisture, or near window, etc.
- Do not place the charging stand in a place where people pass by frequently, in entrance way or narrow passage.
 - People may trip over it and be injured, or product damage may occur.
- If the charging stand is installed incorrectly, it may fall over, which could cause an injury and severe product damage.
- Install the charging stand in a place where there are no objects that could break and cause damage.
- If you have a problem with installing the charging stand, contact a Samsung service center.

Appendix

Battery usage

NOTE

- If the product does not work after you charge the battery, replace the battery. If it still does not work with the new battery, contact a Samsung service center.

CAUTION

- Do not disassemble the battery or the charging stand.
- Do not apply heat to the battery and do not put the battery in a fire.
- Removing the battery during operation may cause product malfunction.
- If you have removed the battery while the vacuum cleaner motor is operating, the vacuum cleaner may not work for 30 seconds even after you re-attach the battery for safety reasons.
- Battery usage time may shorten with increased battery use. When the battery no longer charges or runs down quickly, replace the exhausted battery with a new one.
- Use only the charging stand and batteries provided by the manufacturer.
- Before inserting the battery, confirm that the battery is being inserted in the correct direction.

Operation

NOTE

- Please charge the battery before using a newly purchased battery for the first time or if you have not used the battery for a long time.
- When the battery level is low, recharge it. If the level of the battery remains low for a long period of time, it can cause the performance of the battery to degrade.
- Before using the Spray Spinning Sweeper, detach the wet pad and put some water on it, then reattach it to the spin disk.
- Clean the reusable wet pad of the Spray Spinning Sweeper in a normal washing machine by using a neutral detergent.
 - However, If the wet pad is exposed to heat, softener, etc, it may be modified or discolored and product performance can be degraded. Do not boil the wet pad.
- Use a genuine wet pad of Samsung Electronics for the Spray Spinning Sweeper.
- If the Spray Spinning Sweeper is used without a wet pad, any product malfunction will not be covered by warranty and a service fee will be charged.
- When you purchase an additional reusable wet pad for the Spray Spinning Sweeper, contact a Samsung service center.
- When you purchase an additional disposable wet pad, check the model name (VCA-SPA95).
 - Contact your nearest Samsung Electronics retailer or Samsung service center to purchase any consumable accessories.
- Do not push the charging stand so it falls over.
 - Personal injury, product and floor damage may occur.

Appendix

CAUTION

- Do not leave the product leaning against a wall or a table.
 - The product may fall and an injury and severe product damage may occur.
- Do not allow children to touch the product while cleaning.
 - When the vacuum cleaner overheats, children may get burnt.
- Use both hands to carry the charging stand.
- Before unplugging or plugging in the charging stand, turn off the vacuum cleaner and make sure that the pins of the power plug do not come into contact with your hands.
 - Fire or electric shock may occur.
- Do not step heavily on the upper part of the Spray Spinning Sweeper while using it.
 - Product damage or floor damage may occur.
- When cleaning, be careful that the side of the brush does not bump into a molding part, a wall, furniture, etc. and cause staining.
 - For a slight stain, remove it with a wet tissue or a cleaner.
- Do not use water to clean the product when in use.
- You should use the product in dry places and do not use the product in wet places or on water.
- Do not put hot water, detergent, etc. into the water tank of the Spray Spinning Sweeper.
 - Product malfunction or performance degradation may occur.
- When not using the Spray Spinning Sweeper, empty all the water in the water tank.
- Do not use without a filter in place.

Maintenance

NOTE

- If the inner part of the Spray Spinning Sweeper is clogged with large foreign matter, spinning speed decreases or the spin disk stops.

CAUTION

- Do not push the vacuum cleaner while it is stored in the charging stand.
 - Personal injury, product and floor damage may occur.
- Do not clean the brush of the vacuum cleaner with water. Cleaning it with water can cause deformation of parts or malfunction.
- If you notice a continuous reduction in suction or the vacuum cleaner overheats abnormally, clean the products and replace filters.

Appendix

Troubleshooting

Before calling for service, review the problems and solutions below. Note that you will be charged for any service calls in which no defects were found.

Problem	Solutions
The vacuum cleaner does not work.	<ul style="list-style-type: none"> • Check the battery level and charge the battery. • Check whether the product is turned off, and then press the Power button to turn it on. • Check whether the Telescopic Pipe, the dustbin or the brush is blocked. • Check that the Washable Micro Filter is inserted correctly. • If the vacuum cleaner has not been used for a long time, charge the battery. • If the battery dies, replace the battery.
The spin brush (or spin disk) of an accessory is not moving.	<ul style="list-style-type: none"> • When the 'Check Brush' message appears on the display, turn off the vacuum cleaner and check whether the brush is clogged with foreign matter. If so, remove the foreign matter and restart the vacuum cleaner. • When the vacuum cleaner is turned on, turn it off and on again. <ul style="list-style-type: none"> - For the Slim LED Brush and Spray Spinning Sweeper, if the overheating prevention device of the accessory's motor enables, it may take about 30 minutes to cool the motor.
An odor emits from the air outlet or the filter of the product.	<ul style="list-style-type: none"> • Empty the dustbin and clean the filters frequently. <ul style="list-style-type: none"> - As your vacuum cleaner is a new product, it may have a slight odor for the first 3 months after purchase. - If you use the vacuum cleaner for a long period of time, accumulated dirt in the dustbin or dust on the filter may generate an odor. • Replacement filters are available at your local Samsung service agent.
Static electricity occurs when cleaning a thick and soft mat.	<ul style="list-style-type: none"> • Materials of a mat (childcare center mat, noise prevention mat for between floors, etc.) may cause the static electricity. <ul style="list-style-type: none"> - Move the brush on a normal floor for a while and clean again, then the static electricity should disappear.
The Spray Spinning Sweeper does not spray water.	<ul style="list-style-type: none"> • When using the Spray Spinning Sweeper for the first time, the air in the internal pump and the tube may cause to delay in spraying water. <ul style="list-style-type: none"> - Detach the water tank, press the + button, and check that the pump operates with a sound. - Fill the water tank, attach it to the Spray Spinning Sweeper, and then press the + button repeatedly.
The vacuum cleaner cannot be charged.	<ul style="list-style-type: none"> • Confirm that the voltage provided to the charging stand matches the requirements of the charging stand. • Check that the vacuum cleaner is turned on, and then check that the LED of the battery level indicator is turned on. • Check if foreign matter (dust) is on the charging terminal. Remove any foreign matter with a cotton swab or soft cloth.

Problem	Solutions
Vacuum cleaner stops operation during cleaning.	<ul style="list-style-type: none"> As this product has the overheating prevention device of the motor, product will stop operation temporarily for the following conditions. After correcting the cause of the problem, turn the product on again. (This case may differ depending on the ambient temperature.) <ul style="list-style-type: none"> When the vacuum cleaner operates with a full dustbin. When the vacuum cleaner operates with a brush clogged. When the Extension Crevice Tool is used for long hours.
Suction force decreases suddenly and the vacuum cleaner makes a vibrating sound.	<ul style="list-style-type: none"> Check whether the brush, the dustbin or the Telescopic Pipe is clogged with foreign matter and remove it. Check whether the dustbin is fully filled with dust. If it is, empty the bin. Check whether the filter is dirty. If it is, clean the filter.
Cleaning is finished but small dust particles come out of the accessories.	<ul style="list-style-type: none"> After cleaning, operate the vacuum cleaner for 10 seconds or more to suck the small dust particles.
Brush stops on deep pile carpet or floor mat.	<ul style="list-style-type: none"> Protective mode may operate to prevent motor damage caused by overload adjust suction power according to pile length and resistance of carpet.

Product specification

Charging and cleaning time may differ depending on the brushes and the conditions of use.

Model		VS20C95**** Series	
Power consumption (Vacuum cleaner)		Based on a handy vacuum cleaner: 580 W	
Battery specification		Li-ion 25.2 V, 2200 mAh, 7 cell	
Weight (Vacuum cleaner)		2.71 kg (Jet Dual Brush) 2.51 kg (Slim LED Brush)	
Size	Vacuum cleaner	Width 250 mm x Depth 202 mm x Height 930 mm	
	charging stand	Width 300 mm x Depth 300 mm x Height 755 mm	
Charging time		3.5 hours	
Cleaning time (Default mode: MID)	Combination Tool / Extension Crevice Tool	MIN: Approx. 60 min.	MID: Approx. 30 min.
		MAX: Approx. 10 min.	JET: Approx. 3 min.
	Jet Dual Brush	MIN: Approx. 42 min.	MID: Approx. 24 min.
		MAX: Approx. 14 min.	JET: Approx. 8 min.
	Slim LED Brush	MIN: Approx. 48 min.	MID: Approx. 25 min.
		MAX: Approx. 14 min.	JET: Approx. 9 min.
Spray Spinning Sweeper		Approx. 100 min.	

NOTE

Cleaning time stated in the above table is based on a test after using one battery. Cleaning time doubles when you use two batteries consecutively.

Warranty

SAMSUNG VACUUM CLEANER

LIMITED WARRANTY TO ORIGINAL CONSUMER PURCHASER WITH PROOF OF PURCHASE AND/OR PROOF OF DELIVERY

This SAMSUNG brand product, as supplied and distributed by SAMSUNG ELECTRONICS AMERICA, INC. (SAMSUNG) and delivered new, in the original carton to the original consumer purchaser, is warranted by SAMSUNG against manufacturing defects in materials and workmanship for the following limited warranty period, starting from the date of delivery to the original consumer purchaser:

One (1) year parts and labor

Digital Inverter motor (Part only) : Ten (10) years

Battery (Part only) : Two (2) years

This limited warranty is valid only on products purchased and used in the United States that have been installed, operated, and maintained according to the instructions attached to or furnished with the product. To receive warranty service, the purchaser must contact SAMSUNG at the address or phone number provided below for problem determination and service procedures. Warranty service can only be performed by a SAMSUNG authorized service center. The original dated bill of sale and/or proof of delivery must be presented upon request to SAMSUNG or SAMSUNG's authorized service center to receive warranty service.

During the applicable warranty period, a product will be repaired, replaced, or the purchase price refunded, at the sole option of SAMSUNG. SAMSUNG may use new or reconditioned parts in repairing a product, or replace the product with a new or reconditioned product. Replacement parts and products are warranted for the remaining portion of the original product's warranty or ninety (90) days, whichever is longer. All replaced parts and products are the property of SAMSUNG and you must return them to SAMSUNG.

This limited warranty covers manufacturing defects in materials or workmanship encountered in normal household, noncommercial use of this product and shall not cover the following: damage that occurs in shipment, delivery, installation, and uses for which this product was not intended; damage caused by unauthorized modification or alteration of the product; product where the original factory serial numbers have been removed, defaced, changed in any way, or cannot be readily determined; cosmetic damage including scratches, dents, chips, and other damage to the product's finishes; damage caused by abuse, misuse, pest infestations, accident, fire, floods, or other acts of nature or God; damage caused by use of equipment, utilities, services, parts, supplies, accessories, applications, installations, repairs, external wiring or connectors not supplied or authorized by SAMSUNG; damage caused by incorrect electrical line current, voltage, fluctuations and surges; damage caused by failure to operate and maintain the product according to instructions; in-home instruction on how to use your product; and service to correct installation not in accordance with electrical or plumbing codes or correction of household electrical or plumbing (i.e., house wiring, fuses, or water inlet hoses). The cost of repair or replacement under these excluded circumstances shall be the customer's responsibility.

Warranty

Visits by an authorized servicer to explain product functions, maintenance or installation are not covered by this limited warranty. Please contact SAMSUNG at the number below for assistance with any of these issues.

EXCLUSION OF IMPLIED WARRANTIES

IMPLIED WARRANTIES, INCLUDING THE IMPLIED WARRANTIES OF MERCHANTABILITY OR FITNESS FOR A PARTICULAR PURPOSE, ARE LIMITED TO ONE YEAR OR THE SHORTEST PERIOD ALLOWED BY LAW. Some states do not allow limitations on how long an implied warranty lasts, so the above limitations or exclusions may not apply to you. This warranty gives you specific rights, and you may also have other rights, which vary from state to state.

LIMITATION OF REMEDIES

YOUR SOLE AND EXCLUSIVE REMEDY IS PRODUCT REPAIR, PRODUCT REPLACEMENT, OR REFUND OF THE PURCHASE PRICE AT SAMSUNG'S OPTION, AS PROVIDED IN THIS LIMITED WARRANTY. SAMSUNG SHALL NOT BE LIABLE FOR SPECIAL, INCIDENTAL OR CONSEQUENTIAL DAMAGES, INCLUDING BUT NOT LIMITED TO TIME AWAY FROM WORK, HOTELS AND/OR RESTAURANT MEALS, REMODELING EXPENSES, LOSS OF REVENUE OR PROFITS, FAILURE TO REALIZE SAVINGS OR OTHER BENEFITS REGARDLESS OF THE LEGAL THEORY ON WHICH THE CLAIM IS BASED, AND EVEN IF SAMSUNG HAS BEEN ADVISED OF THE POSSIBILITY OF SUCH DAMAGES. Some states do not allow exclusion or limitation of incidental or consequential damages, so the above limitations or exclusions may not apply to you. This warranty gives you specific rights, and you may also have other rights, which vary from state to state.

SAMSUNG does not warrant uninterrupted or error-free operation of the product. No warranty or guarantee given by any other person, firm, or corporation with respect to this product shall be binding on SAMSUNG.

To obtain warranty service, please contact SAMSUNG at:

Samsung Electronics America, Inc.
85 Challenger Road
Ridgefield Park, NJ 07660-2112
1-800-SAMSUNG (726-7864)
www.samsung.com/us/support

Warranty (CANADA)

PLEASE DO NOT DISCARD. THIS PAGE REPLACES THE WARRANTY PAGE IN THE USE & CARE GUIDE

SAMSUNG Vacuum Cleaner

LIMITED WARRANTY TO ORIGINAL PURCHASER

This SAMSUNG brand product, as supplied and distributed by SAMSUNG ELECTRONICS CANADA, INC. (SAMSUNG) and delivered new, in the original carton to the original consumer purchaser, is warranted by SAMSUNG against manufacturing defects in materials and workmanship for a limited warranty period of:

One (1) Year Parts and Labor.

Digital Inverter motor (Part only) : Ten (10) years

Battery (Part only) : Two (2) years

This limited warranty begins on the original date of purchase, and is valid only on products purchased and used in CANADA. To receive warranty service, the purchaser must contact SAMSUNG for problem determination and service procedures. Warranty service can only be performed by a SAMSUNG authorized service center. The original dated bill of sale must be presented upon request as Proof of purchase to SAMSUNG or SAMAUNG's authorized service center.

SAMSUNG will repair or replace this product, at our option and at no charge as stipulated herein, with new or reconditioned parts or products if found to be defective during the limited warranty period specified above.

All replaced parts and products become the property of SAMSUNG and must be returned to SAMSUNG.

Replacement parts and products assume the remaining original warranty, or ninety (90) days, whichever is longer. This limited warranty covers manufacturing defects in materials and workmanship encountered in normal household, noncommercial use of this product and shall not apply to the following: damage which occurs in shipment; delivery and installation;

applications and uses for which this product was not intended; altered product or serial numbers; cosmetic damage or exterior or accidents, abuse, neglect, fire, water, lightning or other acts of nature; use of products, equipment, systems, utilities, services, parts, supplies, accessories, applications, installations, repairs, external wiring or connectors not supplied or authorized by SAMSUNG which damage this product or result in service problems;

incorrect electrical line voltage, fluctuations and surges; customer adjustments and failure to follow operating instructions, maintenance and environmental instructions that are covered and prescribed in the instruction book; product removal and reinstallation; problems caused by pest infestations, misuse and abuse by user. This limited warranty shall not cover cases of incorrect electric current, voltage or supply, light bulbs, house fuses, house wiring, cost of a service call for instructions, or fixing installation errors. SAMSUNG does not warrant uninterrupted or error-free operation of the product.

Warranty (CANADA)

EXCEPT AS SET FORTH HEREIN THERE ARE NO WARRANTIES ON THIS PRODUCT EITHER EXPRESS OR IMPLIED AND SAMSUNG DISCLAIMS ALL WARRANTIES INCLUDING, BUT NOT LIMITED TO, ANY IMPLIED WARRANTIES OF MERCHANTABILITY, INFRINGEMENT OR FITNESS FOR A PARTICULAR PURPOSE.

NO WARRANTY OR GUARANTY GIVEN BY ANY PERSON, FIRM OR CORPORATION WITH RESPECT TO THIS PRODUCT SHALL BE BINDING ON SAMSUNG. SAMSUNG SHALL NOT BE LIABLE FOR LOSS OF REVENUE OR PROFITS, FAILURE TO REALIZE SAVINGS OR OTHER BENEFITS, OR ANY OTHER SPECIAL, INCIDENTAL OR CONSEQUENTIAL DAMAGES CAUSED BY THE USE, MISUSE OR INABILITY TO USE THIS PRODUCT, REGARDLESS OF THE LEGAL THEORY ON WHICH THE CLAIM IS BASED, AND EVEN IF SAMSUNG HAS BEEN ADVISED OF THE POSSIBILITY OF SUCH DAMAGES. NOR SHALL RECOVERY OF ANY KIND AGAINST SAMSUNG BE GREATER IN AMOUNT THAN THE PURCHASE PRICE OF THE PRODUCT SOLD BY SAMSUNG AND CAUSING THE ALLEGED DAMAGE. WITHOUT LIMITING THE FOREGOING, PURCHASER ASSUMES ALL RISK AND LIABILITY FOR LOSS, DAMAGE OR INJURY TO PURCHASER AND PURCHASER'S PROPERTY AND TO OTHERS AND THEIR PROPERTY ARISING OUT OF THE USE, MISUSE OR INABILITY TO USE THIS PRODUCT. THIS LIMITED WARRANTY SHALL NOT EXTEND TO ANYONE OTHER THAN THE ORIGINAL PURCHASER OF THIS PRODUCT, IS NONTRANSFERABLE AND STATES YOUR EXCLUSIVE REMEDY.

Some provinces do not allow limitations on how long an implied warranty lasts, or the exclusion or limitation of incidental or consequential damages, so the above limitations or exclusions may not apply to you. This warranty gives you specific legal rights, and you may also have other rights which vary from state to state.

To obtain warranty service, please contact SAMSUNG at:

Samsung Electronics Canada Inc.
2050 Derry Road West, Mississauga, Ontario L5N 0B9 Canada
1-800-SAMSUNG (726-7864) and www.samsung.com/ca/support (English)
www.samsung.com/ca_fr/support (French)

Memo

CANADA	1-800-SAMSUNG (726-7864)	www.samsung.com/ca/support (English) www.samsung.com/ca_fr/support (French)
U.S.A	1-800-SAMSUNG (726-7864) 1-844-SAM-PAYS (726-7297)	www.samsung.com/us/support

