

SAMSUNG

LED TV

user manual

SERIES 5 5000

Figures and illustrations in this User Manual are provided for reference only and may differ from actual product appearance. Product design and specifications may be changed without notice.

Important Warranty Information Regarding Television Format Viewing

- Wide screen format LED Displays with aspect ratios of 16:9 (the ratio of the screen width to screen height) are primarily designed to display wide screen format full-motion video. The images displayed on them should primarily be in the wide screen 16:9 ratio format, or expanded to fill the screen if your model offers this feature and the images are constantly moving. Displaying stationary graphics and images on screen, such as the dark sidebars on non-expanded standard format television video and programming, should be limited to no more than 5% of the total television viewing per week. Additionally, viewing other stationary images and text such as stock market crawls, video game displays, station logos, web sites or computer graphics and patterns, should be limited as described above for all televisions. Displaying stationary images that exceed the above guidelines can cause uneven aging of LED Displays that leave subtle, but permanent burned-in ghost images in the LED picture. To avoid this, vary the programming and images, and primarily display full-screen moving images, not stationary patterns or dark bars. On LED models that offer picture sizing features, use these controls to view different formats as a full-screen picture. Be careful in the selection and duration of television formats you use for viewing. Uneven LED aging as a result of format selection and use, as well as burned-in images, are not covered by your Samsung limited warranty.

SAMSUNG ELECTRONICS NORTH AMERICAN LIMITED WARRANTY STATEMENT

Subject to the requirements, conditions, exclusions and limitations of the original Limited Warranty supplied with Samsung Electronics (SAMSUNG) products, and the requirements, conditions, exclusions and limitations contained herein, SAMSUNG will additionally provide Warranty Repair Service in the United States on SAMSUNG products purchased in Canada, and in Canada on SAMSUNG products purchased in the United States, for the warranty period originally specified, and to the Original Purchaser only.

The above described warranty repairs must be performed by a SAMSUNG Authorized Service Center. Along with this Statement and the Original Limited Warranty Statement, a dated Bill of Sale as Proof of Purchase must be presented to the Service Center. Transportation to and from the Service Center is the responsibility of the purchaser. Conditions covered are limited only to manufacturing defects in material or workmanship, and only those encountered in normal use of the product. Exclusions include, but are not limited to, any originally specified provisions for in-home or on-site services, minimum or maximum repair times, exchanges or replacements, accessories, options, upgrades, or consumables.

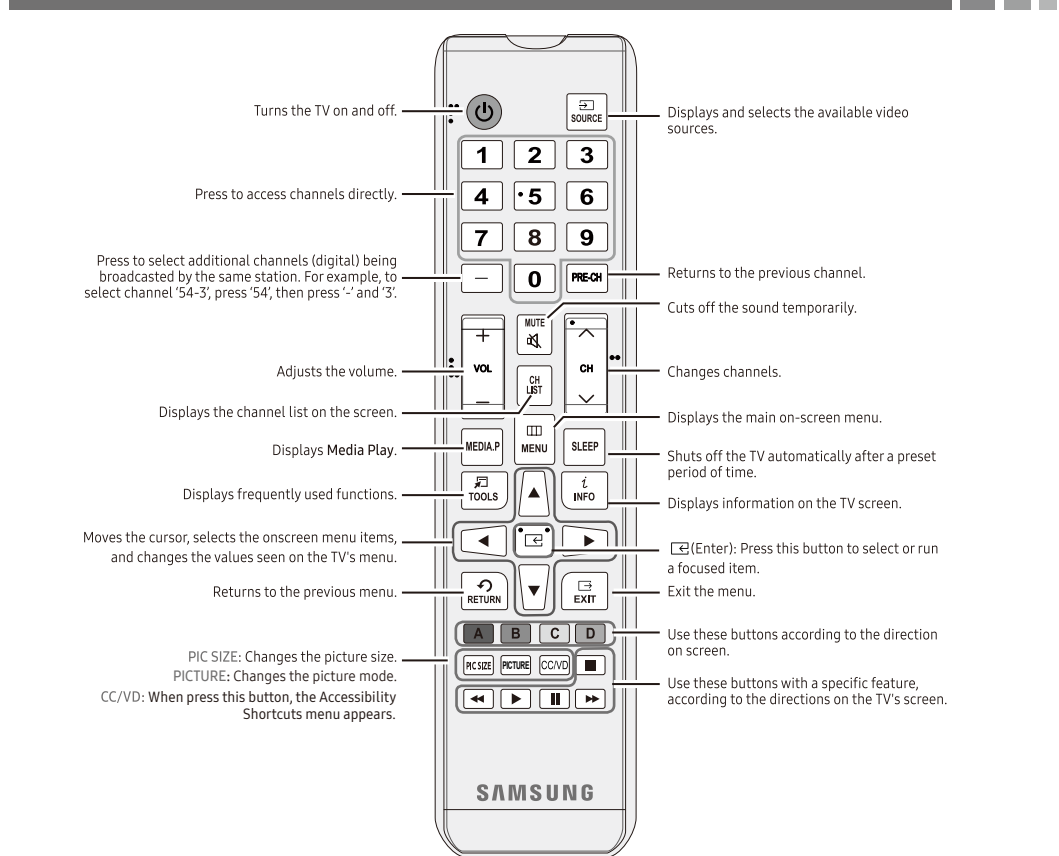
For the location of a SAMSUNG Authorized Service Center, please call toll-free: ~ In the United States: 1-800-SAMSUNG (1-800-726-7864)

~ In Canada: 1-800-SAMSUNG



910101-7861

Remote Control

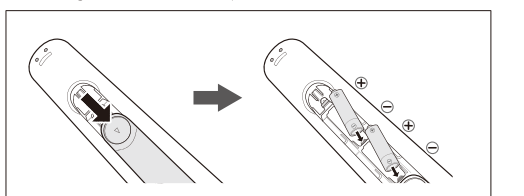


The button names above may differ from the actual names. Some buttons on the remote control may not be available. This remote control has Braille points on the Power, Channel, Volume, and Enter buttons and can be used by visually impaired persons.

Display Modes (HDMI/DVI Input)

Mode	Resolution	Horizontal Frequency (kHz)	Vertical Frequency (Hz)	Pixel Clock Frequency (MHz)	Sync Polarity (H/V)
IBM	720 x 400	31.469	70.087	28.322	-/+
	640 x 480	35.000	60.000	33.240	-/+
MAC	852 x 484	35.762	59.951	33.240	-/+
	1152 x 870	68.681	75.042	100.000	-/+
	640 x 480	31.469	59.940	25.715	-/+
	640 x 480	31.500	72.809	31.500	-/+
	640 x 480	31.500	75.000	31.500	-/+
	800 x 600	37.879	60.317	40.000	+/+
	800 x 600	40.077	72.188	50.000	+/+
	800 x 600	46.875	75.000	60.000	+/+
	1024 x 768	48.363	60.004	65.000	-/+
	1024 x 768	56.474	70.059	75.000	-/+
	1024 x 768	60.023	75.009	78.750	+/+
	1152 x 864	67.500	75.000	108.000	+/+
	1280 x 720	45.000	60.000	74.250	+/+
	1280 x 800	67.500	59.970	81.500	+/+
	1280 x 1024	63.981	60.020	108.000	+/+
	1280 x 1024	79.719	75.025	135.000	+/+
	1366 x 768	67.712	59.790	85.500	+/+
	1440 x 900	55.935	59.887	104.500	+/+
	1600 x 1008	60.000	60.000	108.000	+/+
	1680 x 1050	63.260	59.954	136.250	+/+
	1920 x 1080	67.500	60.000	148.500	+/+

Installing batteries (Battery size: AAA)



- Use the remote control within 23 feet from TV.
- Bright light may affect the performance of the remote control. Avoid use when near fluorescent lights or neon signs.
- The Color and shape may vary depending on the model.

Important Safety Instructions

Warning! Important Safety Instructions

(Please read the Safety Instructions before using your TV.)

CAUTION

RISK OF ELECTRIC SHOCK. DO NOT OPEN.

CAUTION: TO REDUCE THE RISK OF ELECTRIC SHOCK, DO NOT REMOVE COVER (OR BACK). THERE ARE NO USER SERVICEABLE PARTS INSIDE. REFER ALL SERVICING TO QUALIFIED PERSONNEL.

This lightning flash with arrowhead symbol within an equilateral triangle is intended to alert the user to the presence of non-insulated "dangerous voltage" within the product's enclosure that may be of sufficient magnitude to constitute a risk of electric shock.

The exclamation point within an equilateral triangle is intended to alert the user to the presence of important operating and maintenance instructions in the literature accompanying the appliance.

This equipment is a Class II or double insulated electrical appliance. It has been designed in such a way that, it does not require a safety connection to electrical earth.

AC voltage: Rated voltage marked with this symbol is AC voltage.

Caution: Consult instructions for use: This symbol instructs the user to consult the user manual for further safety related information.

- Read these instructions – All the safety and operating instructions should be read before this product is operated.
- Keep these instructions – The safety and operating instructions should be retained for future reference.
- Heed all warnings – All warnings on the appliance and in the operating instructions should be adhered to.
- Follow all instructions – All operating and use instructions should be followed.
- Do not use this apparatus near water – The appliance should not be used near water or moisture – for example, in a wet basement or near a swimming pool, and the like.
- Clean only with dry cloth.
- Do not block any ventilation openings. Install in accordance with the manufacturer's instructions.
- Do not install near any heat sources such as radiators, heat registers, stoves, or other apparatus (including amplifiers) that produce heat.
- Do not defeat the safety purpose of the polarized or grounding-type plug. A polarized plug has two blades with one wider than the other. A grounding-type plug has two blades and a third grounding prong. The wide blade or the third prong are provided for your safety. If the provided plug does not fit into your outlet, consult an electrician for replacement of the obsolete outlet.
- Protect the power cord from being walked on or pinched particularly at plugs, convenience receptacles, and the point where they exit from the apparatus.
- Only use attachments/accessories specified by the manufacturer.
- Use only with the cart, stand, tripod, bracket, or table specified by the manufacturer, or sold with the apparatus. When a cart is used, use caution when moving the cart/appliance combination to avoid injury from tip-over.
- Unplug this apparatus during lightning storms or when unused for long periods of time.
- Refer all servicing to qualified service personnel. Servicing is required when the apparatus has been damaged in any way, such as the power-supply cord or plug is damaged, liquid has been spilled or objects have fallen into the apparatus, the apparatus has been exposed to rain or moisture, does not operate normally, or has been dropped.
- Please keep the unit in a well-ventilated environment.
- Do not block ventilation slots in the back cover. You may place the TV in a cabinet, but ensure at least 5cm (2") clearance all around.
- The ventilation should not be impeded by covering the ventilation openings with items, such as newspapers, table-cloths, curtains, etc.
- No naked flame sources, such as lighted candles, should be placed on apparatus.
- The use of apparatus in moderate climates.
- Attention should be drawn to the environmental aspects of battery disposal.

WARNING: To reduce the risk of fire or electric shock, do not expose this apparatus to rain or moisture. The apparatus should not be exposed to dripping or splashing. Objects filled with liquids, such as vases should not be placed on apparatus.

WARNING: The batteries shall not be exposed to excessive heat such as sunshine, fire or the like.

WARNING: The main plug is used as disconnect device, the disconnect device shall remain readily operable.

WARNING: To reduce the risk of electric shock, do not remove cover (or back) as there are no user-serviceable parts inside. Refer servicing to qualified personnel.

The On Screen Menus

Your TV has two kinds of menus, the Main menu and the various Tools menus. The Main menu gives you access to most or all of the menu options available on your TV. The Tools menus display a selected number of frequently used menu options that change depending on the screen you are viewing. A Tools menu symbol (Ⓢ) in the lower right side of the screen indicates that a Tools menu is available.

The Main menu has seven primary categories:

- Picture
- Sound
- Channel
- Setup
- Input
- Application
- Support

To view the Main menu, press the MENU button on your remote. To view a Tools menu, press the TOOLS button on your remote.

The menu options that appear in the Main menu depend on the Source you have selected. For example, if you have selected the HDMI source, the Channel category will not appear. To see the Channel category, you must first select TV in the Source List.

The menu options are presented below, arranged by Main menu categories. A Tools button symbol (Ⓢ) next to an option name indicates the option is also available in one of the Tools menus.

- Dynamic:** Brightens the screen. Suitable for a bright room.
- Standard:** Suitable for normal room brightness.
- Movie:** Darkens the screen, making it less gray. Suitable for watching movies in a darkened room.
- Entertain:** Sharpens the picture. Suitable for games.
- Only available when the TV is connected to a PC.

Backlight / Contrast / Brightness / Sharpness / Color / Tint (G/R)

- Backlight:** Adjusts the brightness of the screen by adjusting the brightness of the individual pixels.
- Contrast:** Increases or decreases the contrast between dark and light areas of the picture.
- Brightness:** Adjusts the brightness of the screen. Not as effective as Backlight.
- Sharpness:** Sharpens or softens the edges of objects.
- Color:** Adjusts the color saturation. The higher the Color setting, the more intense the color. Low settings remove color and the picture becomes black, white, and gray.
- Tint (G/R):** Adjusts the amount of green and red in the picture. As you increase the amount of green, the amount of red decreases and vice versa.
- When the TV is connected to a PC, you can only make changes to Backlight, Contrast, Brightness, and Sharpness.

Picture Options

- When the TV is connected to a PC, you can only make changes to the Color Tone, Size, and HDMI Black Level.
- Color Tone (Cool / Standard / Warm):** Cool makes the picture blue (cooler). Warm makes the picture redder (warmer).
- Size:** Set the size and aspect ratio of the picture on the screen. Your cable box or satellite receiver may have its own set of screen sizes as well. However, we highly recommend you use the TV's 16:9 wide screen mode of the time.
- Zoom:** Provides moderate magnification of the picture. Sides, top, and bottom are cut off.
- Zoom2:** Provides larger magnification of the picture. Sides, top, and bottom are cut off.
- Wide Fit:** Enlarges the aspect ratio of the picture so the picture fits the entire screen.
- 4:3:** Selects the picture of the old, 4:3 format and puts black or gray borders on the right and left of the picture.
- Do not watch your TV in the 4:3 format for a long time. The borders displayed on the left, right, and center of the screen 4:3 format cause image retention (screen burn) which is not covered by the warranty.

- When you set **Speaker Select** to **External Speaker**, the TV's speakers are turned off. If you will hear sound through the external speakers only. When you set **Speaker Select** to **TV Speaker** both the TV's speakers and the external speakers are on. You will hear sound through both.
- When **Speaker Select** is set to **External Speaker**, the VOLUME and MUTE buttons will not operate and the sound settings will be limited.
- If there is no video signal, both the TV's speakers and the external speakers will be mute.

Getting Started

Accessories

- Remote Control & Batteries (AAA x 2)
- Warranty Card / Regulatory Guide
- Owner's Instructions
- Power Cord

Input Cables (Sold Separately)

Audio

Composite (AV)

HDMI

HDMI-DVI

Component

Coaxial (RF)

Make sure you have the correct cable before plugging it in. Illustrations of common plugs and jacks are shown below.

Cable Plugs

Ports/Jacks

HDMI

USB

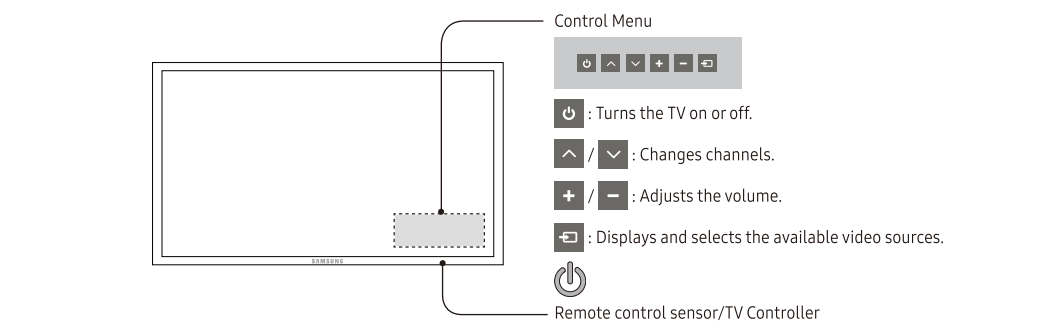
Optical

Do not plug cables in upside down. Be sure to check the orientation of the plug before plugging it in.

Do not plug in opposite or wrong direction. It could damage the TV port.

TV Controller

The TV's Controller, a small joy stick like button on the bottom right side of the TV, lets you control the TV without the remote control.



- The product color and shape may vary depending on the model.
- You cannot input the numbers by pressing the TV's controller.
- If you press it first, the control menu appears. You can select the function by pressing and holding the TV's controller.
- With the TV's Controller, you cannot perform other operations except for turning the TV on or off, changing the channel, adjusting the volume, and switching the input source.

Plug & Play (Initial Setup)

When you turn the TV on for the first time, a sequence of screens and on-screen prompts will assist you in configuring the TV's basic settings. Press the POWER button. **Plug & Play** is available only when the input source is set to TV. Set the initial setup following instructions that the TV gives.

- Connecting the power cord and antenna. (refer to 'Connections')

Preferred Language

- Digital Channels only.
- TV broadcasts can transmit many audio tracks simultaneously (for example, simultaneous translations of a program into foreign languages).
- You can adjust or store settings for each external device you have connected to an input on the TV. Picture Sizes available by Input Source are listed below:

Multi-Track Sound (MTS)

- Analog channels only.
- Mono:** Select for channels that are broadcasting in mono or if you are having difficulty receiving a stereo signal.
- Stereo:** Select for channels that are broadcasting in stereo.
- SAP:** Select to listen to the Separate Audio Program, which is usually a foreign-language translation.
- Depending on the program being broadcast, you can listen to **Mono**, **Stereo** or **SAP**.

SPDIF Output

- The SPDIF (Sony Philips Digital InterFace) outputs an uncompressed digital audio signal when you connect the digital audio jack on the back of the TV to a digital audio in jack on a receiver or home theater.
- HDMI Black Level (Normal / Low):** For HDMI signals, select the black level to adjust the screen depth. Low make blacks look darker.
- Available only in HDMI (1080i / 1080p) mode (RGB signals).
- Film Mode (Off / Auto / Auto2):** Sets the TV to automatically sense and process film signals from all sources and adjusts the picture for optimum quality.
- Available in ATW (DTV Interface), AV, COMPONENT (480i / 1080i) and HDMI (480i / 1080i).

- Motion Light (Off / On):** When on, the TV automatically dims the screen's backlights when full brightness is not needed - for example when the TV is displaying dark scenes - to reduce power consumption. The backlights are returned to full brightness when the TV displays bright scenes.

Picture Description

(digital channels only)

Add video description to the main audio to help the visually impaired.

Dolby Digital Comp

Sets Dolby Digital compression mode.

HDMI Audio Format

You can select the HDMI Audio format. The available HDMI Audio format may differ depending on the input source.

Sound Reset

Reset All: Resets all sound settings to the factory defaults.

Channel Menu

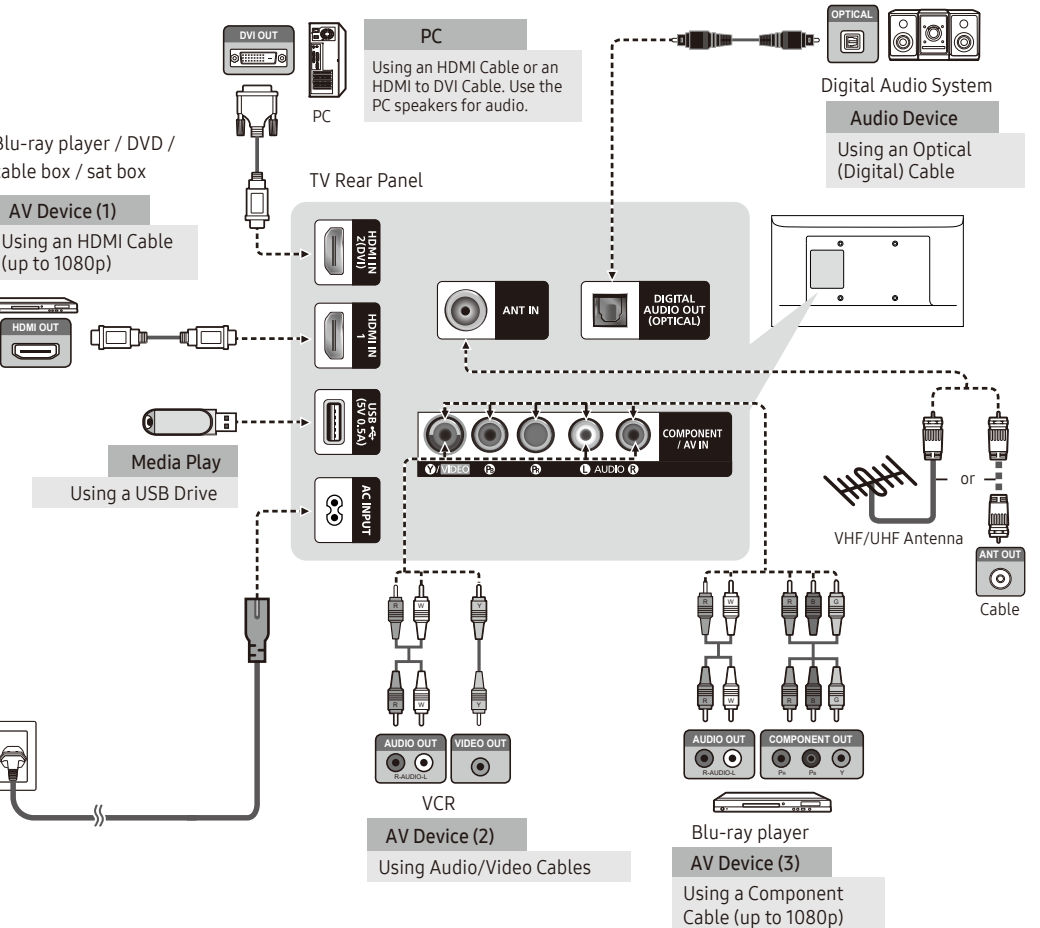
- Memorizing Channels**
- When you first set up your TV using **Plug & Play**, the TV memorized the channels that were available over the air or through your cable system and added them to the Channel List. The Antenna and Auto Program functions described below let you re-run the channel memorization function without having to re-run the **Plug & Play** procedure.
- Antenna (Air / Cable)**
- Before your television can memorize the available channels, you must select your TV's signal source, Air (using an antenna) or Cable. Select Menu > Channel > Antenna > Air or Cable. After you have selected the signal source, go on to the Auto Program function.
- Selecting the signal source using the Antenna function also determines the signal source the TV is tuned to. For example, if you receive your TV signal over the air, and you select Cable, you will see only snow. You must select Air to see a picture.

- Auto Program**
- The Auto Program function memorizes all channels that are available over the air or through your cable system and adds them to the Channel List. If you are using a cable or satellite box, you do not need to run the Auto Program function.

Icons	Meaning
✓	A selected channel.
✓	A Favorite Channel.
Ⓢ	A reserved program.
Ⓢ	A program currently being broadcast.

Connections

- For the best picture and audio quality, connect digital devices using an HDMI cable.
- If you connect an external device to the TV that uses an older version of HDMI, the video and audio may not work. If this occurs, ask the manufacturer of the device about the HDMI version and, if it is out of date, request an upgrade.
- Be sure to purchase a certified HDMI cable. Otherwise, the picture may not display or a connection error may occur.
- PC/DVI AUDIO IN input is not supported.
- For an HDMI to DVI cable connection, you must use the HDMI IN 2 (DVI) port.
- Connecting through the HDMI cable may not be supported depending on the PC.
- If an HDMI to DVI cable is connected to the HDMI IN 2 (DVI) port, the audio does not work.
- For Set-top box connection using HDMI cable, we highly recommend you to connect the HDMI IN 1 (STB) port.



Input Menu

Source List

Use to select TV or other external input sources such as DVD / Blu-ray players / cable box / STB satellite receiver connected to the TV.

- Press the SOURCE button.
- Select a desired external input source.
- TV / AV / Component / HDMI / HDMI2/DVI**
You can only choose external devices that are connected to the TV. In the Source List, connected inputs are highlighted.

- If you have connected a PC to the HDMI IN 2 (DVI) port with an HDMI cable, you should select PC mode in Edit Name.
- If you have connected a PC to the HDMI IN 2 (DVI) port with an HDMI to DVI cable, you should select DVI PC mode in Edit Name.
- If you have connected an AV device to the HDMI IN 2 (DVI) port with an HDMI to DVI cable, you should select DVI mode in Edit Name.

The Channel List Tools Menu

Edit Name lets you associate a device name to an input source, making it easier to select a source. To access Edit Name, enter the Input menu, and then select Edit Name. Select the name of the device from the drop down next to the name of the input jack it is connected to. For example, if your Blu-ray player is connected to HDMI 2, select Blu-ray player from the drop down next to HDMI 2.

- Press the SOURCE button.
- Select a desired external input source.
- TV / AV / Component / HDMI / HDMI2/DVI**
You can only choose external devices that are connected to the TV. In the Source List, connected inputs are highlighted.

- If you have connected a PC to the HDMI IN 2 (DVI) port with an HDMI cable, you should select PC mode in Edit Name.
- If you have connected a PC to the HDMI IN 2 (DVI) port with an HDMI to DVI cable, you should select DVI PC mode in Edit Name.
- If you have connected an AV device to the HDMI IN 2 (DVI) port with an HDMI to DVI cable, you should select DVI mode in Edit Name.

- If you have connected a PC to the HDMI IN 2 (DVI) port with an HDMI cable, you should select PC mode in Edit Name.
- If you have connected a PC to the HDMI IN 2 (DVI) port with an HDMI to DVI cable, you should select DVI PC mode in Edit Name.
- If you have connected an AV device to the HDMI IN 2 (DVI) port with an HDMI to DVI cable, you should select DVI mode in Edit Name.

- If you have connected a PC to the HDMI IN 2 (DVI) port with an HDMI cable, you should select PC mode in Edit Name.
- If you have connected a PC to the HDMI IN 2 (DVI) port with an HDMI to DVI cable, you should select DVI PC mode in Edit Name.
- If you have connected an AV device to the HDMI IN 2 (DVI) port with an HDMI to DVI cable, you should select DVI mode in Edit Name.

- If you have connected a PC to the HDMI IN 2 (DVI) port with an HDMI cable, you should select PC mode in Edit Name.
- If you have connected a PC to the HDMI IN 2 (DVI) port with an HDMI to DVI cable, you should select DVI PC mode in Edit Name.
- If you have connected an AV device to the HDMI IN 2 (DVI) port with an HDMI to DVI cable, you should select DVI mode in Edit Name.

- If you have connected a PC to the HDMI IN 2 (DVI) port with an HDMI cable, you should select PC mode in Edit Name.
- If you have connected a PC to the HDMI IN 2 (DVI) port with an HDMI to DVI cable, you should select DVI PC mode in Edit Name.
- If you have connected an AV device to the HDMI IN 2 (DVI) port with an HDMI to DVI cable, you should select DVI mode in Edit Name.

- If you have connected a PC to the HDMI IN 2 (DVI) port with an HDMI cable, you should select PC mode in Edit Name.
- If you have connected a PC to the HDMI IN 2 (DVI) port with an HDMI to DVI cable, you should select DVI PC mode in Edit Name.
- If you have connected an AV device to the HDMI IN 2 (DVI) port with an HDMI to DVI cable, you should select DVI mode in Edit Name.

- If you have connected a PC to the HDMI IN 2 (DVI) port with an HDMI cable, you should select PC mode in Edit Name.
- If you have connected a PC to the HDMI IN 2 (DVI) port with an HDMI to DVI cable, you should select DVI PC mode in Edit Name.
- If you have connected an AV device to the HDMI IN 2 (DVI) port with an HDMI to DVI cable, you should select DVI mode in Edit Name.

- If you have connected a PC to the HDMI IN 2 (DVI) port with an HDMI cable, you should select PC mode in Edit Name.
- If you have connected a PC to the HDMI IN 2 (DVI) port with an HDMI to DVI cable, you should select DVI PC mode in Edit Name.
- If you have connected an AV device to the HDMI IN 2 (DVI) port with an HDMI to DVI cable, you should select DVI mode in Edit Name.

- If you have connected a PC to the HDMI IN 2 (DVI) port with an HDMI cable, you should select PC mode in Edit Name.
- If you have connected a PC to the HDMI IN 2 (DVI) port with an HDMI to DVI cable, you should select DVI PC mode in Edit Name.
- If you have connected an AV device to the HDMI IN 2 (DVI) port with an HDMI to DVI cable, you should select DVI mode in Edit Name.

- If you have connected a PC to the HDMI IN 2 (DVI) port with an HDMI cable, you should select PC mode in Edit Name.
- If you have connected a PC to the HDMI IN 2 (DVI) port with an HDMI to DVI cable, you should select DVI PC mode in Edit Name.
- If you have connected an AV device to the HDMI IN 2 (DVI) port with an HDMI to DVI cable, you should select DVI mode in Edit Name.

- If you have connected a PC to the HDMI IN 2 (DVI) port with an HDMI cable, you should select PC mode in Edit Name.
- If you have connected a PC to the HDMI IN 2 (DVI) port with an HDMI to DVI cable, you should select DVI PC mode in Edit Name.
- If you have connected an AV device to the HDMI IN 2 (DVI) port with an HDMI to DVI cable, you should select DVI mode in Edit Name.

- If you have connected a PC to the HDMI IN 2 (DVI) port with an HDMI cable, you should select PC mode in Edit Name.
- If you have connected a PC to the HDMI IN 2 (DVI) port with an HDMI to DVI cable, you should select DVI PC mode in Edit Name.
- If you have connected an AV device to the HDMI IN 2 (DVI) port with an HDMI to DVI cable, you should select DVI mode in Edit Name.

- If you have connected a PC to the HDMI IN 2 (DVI) port with an HDMI cable, you should select PC mode in Edit Name.
- If you have connected a PC to the HDMI IN 2 (DVI) port with an HDMI to DVI cable, you should select DVI PC mode in Edit Name.
- If you have connected an AV device to the HDMI IN 2 (DVI) port with an HDMI to DVI cable, you should select DVI mode in Edit Name.

If you selected Manual: The Clock Set screen appears. Use the ▲▼ buttons to change the values in each field or use the number buttons to enter the values directly. Use the ◀▶ buttons to move from field to field. When done with all the fields, press ENTER [↵].

- Available only when Clock Mode is set to Manual.

■ **Sleep Timer** [⏸] Automatically shuts off the TV after a preset period of time (30, 60, 90, 120, 150 and 180 minutes).

- To cancel the Sleep Timer, select OFF.

Timer 1 / Timer 2 / Timer 3

Turns the TV on and off automatically at times and days you select. You can set three different on/off timer settings.

- You must set the clock first.
- **On Time / Off Time**: Set the hour, minute, am/pm, and Activate/inactivate fields for the On Time and Off Time. Use the ◀▶ buttons to move from field to field. Use the ▲▼ buttons to change the values in each field. To activate the timer with the setting you have chosen, set the Activate/ Inactivate field to Activate.
- **Volume**: Set the desired loudness.
- **Contents**: To select what will be turned on when the timer setting is activated. You can set the TV to turn on a specific channel or play back contents such as photo or audio files.

Use the ◀▶ buttons to move to the Contents field, and then press the ENTER [↵] button. The Contents screen appears. Use the ◀▶ buttons to move from field to field. Use the ▲▼ buttons to change the values in each field.

- **TV/USB: Select TV or USB**. The USB device must be connected to your TV before you can select USB.
- **Antenna**: Displays the current antenna source, Air or Cable.
- **Channel**: If you have selected TV, select the desired channel.
- **Music/Photo**: If you have selected USB, follow these steps to select a folder containing MP3 (Music) or JPEG (Photo) files on the USB device:
 - Press the maximum number of files the TV can display, including sub folders, in one folder of a USB storage device is 1000.
 - The media may not play smoothly if you use a USB device rated lower than USB 2.0.

- Use the ◀▶ buttons to move to the field under Music or the field under Photo, and then press the ENTER [↵] button. The TV Displays a single folder (the Root folder) and the type or name of the device.
- Press the ENTER [↵] button. A list of folders on the device appears.
 - If there are no folders on the device, the Yellow button re-appears. Press the ENTER [↵] button to select the Root folder, and then press the RETURN button. The Timer screen re-appears.
- Use the ▲▼ buttons to highlight a folder that contains music or photos, and then press the Yellow select button to select the folder.
- Press the RETURN button. The Timer screen re-appears.

■ **Repeat: Select Once, Everyday, Mon-Fri, Mon-Sat, Sat-Sun or Manual**. If you select Manual, you can select the days you want to activate the timer by using the ◀▶ buttons to highlight the day, and then pressing the ENTER [↵] button. To unselect a day, highlight it, and then press the ENTER [↵] button.

When you finished making all your selections on the Timer screen, press either the ENTER [↵] or RETURN button.

Other Features

■ **Voice Guide (On/Off)** You can activate voice guides that describe the menu options aloud to aid the visually impaired.

- **Voice Guide**: Enable or disable the Voice Guide feature. Voice Guide is provided in the current language.
- **Volume**: Set the volume of the voice guide.
- **Pitch**: Set the pitch of the voice guide.
- **Speed**: Set the speed of the voice guide.

Game Mode (On/Off)

When you connect a game console such as a PlayStation® or Xbox™ to your TV, you can enjoy a more realistic gaming experience by turning on the Game Mode function.

- **Precautions and limitations for game mode**:
 - Before you disconnect the game console and connect another external device, set Game Mode to Off in the setup menu.
 - If you display the TV menu in Game Mode, the screen shakes slightly.
- **Game Mode** is not available when the input source is set to TV.
- After connecting the game console, set Game Mode to On. You may notice slightly reduced picture quality.

Program Rating Lock

The Program Rating Lock feature lets you block programs you've determined are inappropriate for your children based on the program's ratings. To access the Program Rating Lock feature and make any changes, you must enter a PIN (personal identification number). To watch a blocked program, you must also enter the same PIN.

- **Program Rating Lock** is not available in HDMI or Component mode.
- The default PIN number of a new TV set is 0-0-0-0. You can set your own PIN using the Change PIN function.

How It Works When you access the Program Rating Lock Menu functions for the first time, the PIN input screen appears. Enter 0-0-0-0. The PIN screen closes and the Program Rating Lock Menu appears. Every time you access the Program Rating Lock function, the PIN screen will appear and you must enter a PIN. When the Rating Lock screen appears, select Program Rating Lock, and then press ENTER [↵]. Select On, and then press the ENTER [↵] key again. Depending on what type of programs or movies you want to block, select one of the options on the screen, and then press the ENTER [↵] button. The options are listed below:

- **TV Parental Guidelines**: You can block TV programs based on their ratings. This function allows you to control what your children are watching.
- **MPAA Rating**: You can block movies based on their MPAA ratings. The Motion Picture Association of America (MPAA) has implemented a rating system that provides parents or guardians with advanced information on which films are appropriate for children.
- **Canadian English**: You can block TV programs based on their Angliophone Canadian ratings.
- **Canadian French**: You can block TV programs based on their French Canadian ratings.
- **Downloadable U.S. Rating**: You can use parental restriction information while watching CD/DVD channels.

Locking/Blocking Programs or Movies

You lock or block programs and/or movies in essentially the same way for each option. Each option displays a grid or table. All the tables have ratings listed on the left. The TV Parental Guidelines option also has kinds of content listed across the top: All, Lack all TV violence / P:V: Family violence / V: Violence / S: Sexual situation / L: Adult Language / D: Sexually Suggestive Dialog. To lock/block movies or shows with certain ratings and/or content, click the square next to the rating and/or under the kind of content. A lock appears. To unlock/block, click the square again. When you click a low rating, all the ratings above it will also display locks. You can also Allow All or Lock All. When done, press the RETURN button on your remote.

- **Change PIN**: Select Change PIN and the Change PIN screen appears. Choose any 4 digits for your PIN, and then enter them in the Enter New PIN fields. Re-enter the same 4 digits in the Confirm New PIN fields. When the Change PIN screen disappears, press the OK button. The TV has memorized your new PIN.
- If you forget the PIN, press the remote-control buttons in the following sequence, which resets the pin to 0-0-0-0-0: POWER (off) + MUTE + 8 + 2 + 4 + POWER (on).

Caption (On-Screen Text Dialogue)

- **Caption**: You can switch the caption function on or off. If captions are not available, they will not be displayed on the screen.
- The Caption feature does not work in Component or HDMI mode.
- **Caption Mode**: You can select the desired caption mode.
- **Default / CCI-C44 / Text4-Text4**: (analog channels only) The Analog Caption function operates in analog TV channels and digital TV channels.
- **Service / Service / CCI-C44 / Text4-Text4**: (Digital channels only) The Digital Captions function works with digital channels.
- **Service** may not be available in digital caption mode depending on the broadcast.
- **Digital Caption Options**: (Digital channels with digital) Size: Options include Default, Small, Standard, Large and Extra Large. The default is Standard.
- **Font Style**: Options include Default, Styles to 7. The default is Style 0.
- **Foreground Color**: Options include Default, White, Black, Red, Green, Blue, Yellow, Magenta and Cyan. You can change the color of the letters. The default is White.
- **Background Color**: Options include Default, White, Black, Red, Green, Blue, Yellow, Magenta and Cyan. You can change the background color of the captions. The default is Black.
- **Window Color**: Options include Default, White, Black, Red, Green, Blue, Yellow, Magenta, Cyan. Default is Black.

■ **Foreground Opacity**: This adjusts the opacity of text. Options include Default, Transparent, Translucent, Solid and Flashing.

■ **Background Opacity**: This adjusts the opacity of the caption background. Options include Default, Transparent, Translucent, Solid and Flashing.

■ **Window Opacity**: This refers caption to window background, not character background. Options include Default, Transparent, Translucent, Solid, Flashing. Default is Transparent.

Edge Type: Options include No Edge, Raised, Depressed, Uniform, Drop Shadow. Default is No Edge.

Edge Color: Options include Default, White, Black, Red, Green, Blue, Yellow, Magenta, Cyan. Default is White.

Return to Background: This option sets Size, Font Style, Foreground Color, Background Color, Foreground Opacity and Background Opacity to its default.

- **Digital Caption Options** are available only when you can select Default and Service1 - Service in Caption Mode.
- The Foreground and Background cannot be set to the same color.

Boot Logo

Enable or disable the display of the Samsung logo when you turn on the TV.

Eco Solution

- **Energy Saving (Off / Low / Medium / High)**: Lets you adjust the brightness of the TV to reduce power consumption.
- **No Signal Power Off (Off / 15 min. / 30 min. / 60 min.)**: Sets how quickly the TV switches to standby mode, if no picture is being received.
- Disabled when an attached PC is in power saving mode.
- **TV Parental Guidelines**: You can block TV programs based on their ratings.

■ **Auto Power Off (Off / On)**: When Auto Power Off is set to On, the TV will automatically turn off when no user operation is detected for 4 hours.

Auto Protection Time

■ **Auto Protection Time (Off / 2 hours / 4 hours / 8 hours / 10 hours)**: If the screen remains idle with a still image for a certain period of time you define, the screen saver is activated to prevent the formation of ghost images on the screen.

Video

- In the Media Play menu, press the ◀ or ▶ button to select Videos, and then press the ENTER [↵] button.
- Press the ◀▶▶▶ buttons to select a video in the file list.
- Press the ENTER [↵] button or [▶] (Play) button.
 - The file name is displayed on the top of the screen with the playing time.
 - If video time information is unknown, playing time and the progress bar are not displayed.
 - During video playback, you can search using the ◀ and ▶ buttons.
 - In this mode, you can play movie clips contained in a game, but you cannot play the game itself.

Supported Subtitle Formats

3. Press the MEDIA+ button on your remote. The Media Play menu appears.

➤ **Using the Media Play Menu**

To open Media Play in the Menu, follow these steps:

1. Press the MENU button. Then, press the **Left** or **Right** button to select **Applications** on the left, and then press the ENTER button.
2. Press the **Left** or **Right** button to select **Media Play (USB)**, and then press the ENTER button.
3. Press the **Left** or **Right** button to select an icon (**Videos, Music, Photos, Settings**), and then press the ENTER button.

➤ Read the list below before using **Media Play (USB)**

- The file system supports FAT16, FAT32, and NTFS.

Name	File extension
MPEG-4-timed text	.txt
SAMI	.smi
SubRip	.srt
SubViewer	.sub
Micro DVD	.sub or .txt
SubStation Alpha	.ssa
Advanced SubStation Alpha	.ass

Internal

Name	Container	Format
Xsub	AVI	Picture Format
SubStation Alpha	MKV	Text Format
Advanced SubStation Alpha	MKV	Text Format
Subrip	MKV	Text Format

Supported Formats

Media Play only supports USB Mass-Storage Class (MSC) devices. MSC is a Mass Storage Class Bulk-Only-Transport device. Examples of MSC are Thumb drives and Flash Card Readers. Devices that are connected directly to the TV's USB port, USB HDD is not supported.

Before connecting your device to the TV, please back up your present files to prevent file damage or loss of data. SAMSUNG is not responsible for any data file damage or data loss.

A USB device that requires high power (more than 0.5A) may not be supported.

Do not disconnect the USB device while it is loading.

The higher the resolution of the image, the longer it takes to display on the screen.

The maximum supported JPEG resolution is 15360 x 8640 pixels. If a file is corrupted or the TV cannot recognize the file type, the "Not Supported File Format" message appears.

The TV cannot play MP3 files with DRM that have been downloaded from a for-pay site. Digital Rights Management (DRM) is a technology that supports the creation, distribution, and management of digital content in an integrated and comprehensive way, including copyright protection, rights management, and digital rights.

• **Supported Formats**

File Extension	Container	Video Codec	Resolution	Frame rate(r/s)	Bit rate (Mbps)	Audio Codec
*.h263	H.263	H.263	1920x1080			AAC/AC3
		H.264 BP/MP/SP	1920x1080			HE-AAC
		HEVC/H.265	4096x4096			HE-AAC
		MPREG-4-SF/ASP	1920x1080			MP3/MP2
*.h264	H.264	H.264	1920x1080			AAC/AC3
		H.264 BP/MP/SP	1920x1080			HE-AAC
		HEVC/H.265	4096x4096			HE-AAC
		MPREG-4-SF/ASP	1920x1080			MP3/MP2
*.h265	H.265	H.265	1920x1080			AAC/AC3
		H.264 BP/MP/SP	1920x1080			HE-AAC
		HEVC/H.265	4096x4096			HE-AAC
		MPREG-4-SF/ASP	1920x1080			MP3/MP2
*.h266	H.266	H.266	1920x1080			AAC/AC3
		H.264 BP/MP/SP	1920x1080			HE-AAC
		HEVC/H.265	4096x4096			HE-AAC
		MPREG-4-SF/ASP	1920x1080			MP3/MP2
*.h267	H.267	H.267	1920x1080			AAC/AC3
		H.264 BP/MP/SP	1920x1080			HE-AAC
		HEVC/H.265	4096x4096			HE-AAC
		MPREG-4-SF/ASP	1920x1080			MP3/MP2
*.h268	H.268	H.268	1920x1080			AAC/AC3
		H.264 BP/MP/SP	1920x1080			HE-AAC
		HEVC/H.265	4096x4096			HE-AAC
		MPREG-4-SF/ASP	1920x1080			MP3/MP2
*.h269	H.269	H.269	1920x1080			AAC/AC3
		H.264 BP/MP/SP	1920x1080			HE-AAC
		HEVC/H.265	4096x4096			HE-AAC
		MPREG-4-SF/ASP	1920x1080			MP3/MP2
*.h270	H.270	H.270	1920x1080			AAC/AC3
		H.264 BP/MP/SP	1920x1080			HE-AAC
		HEVC/H.265	4096x4096			HE-AAC
		MPREG-4-SF/ASP	1920x1080			MP3/MP2
*.h271	H.271	H.271	1920x1080			AAC/AC3
		H.264 BP/MP/SP	1920x1080			HE-AAC
		HEVC/H.265	4096x4096			HE-AAC
		MPREG-4-SF/ASP	1920x1080			MP3/MP2
*.h272	H.272	H.272	1920x1080			AAC/AC3
		H.264 BP/MP/SP	1920x1080			HE-AAC
		HEVC/H.265	4096x4096			HE-AAC
		MPREG-4-SF/ASP	1920x1080			MP3/MP2
*.h273	H.273	H.273	1920x1080			AAC/AC3
		H.264 BP/MP/SP	1920x1080			HE-AAC
		HEVC/H.265	4096x4096			HE-AAC
		MPREG-4-SF/ASP	1920x1080			MP3/MP2
*.h274	H.274	H.274	1920x1080			AAC/AC3
		H.264 BP/MP/SP	1920x1080			HE-AAC
		HEVC/H.265	4096x4096			HE-AAC
		MPREG-4-SF/ASP	1920x1080			MP3/MP2
*.h275	H.275	H.275	1920x1080			AAC/AC3
		H.264 BP/MP/SP	1920x1080			HE-AAC
		HEVC/H.265	4096x4096			HE-AAC
		MPREG-4-SF/ASP	1920x1080			MP3/MP2
*.h276	H.276	H.276	1920x1080			AAC/AC3
		H.264 BP/MP/SP	1920x1080			HE-AAC
		HEVC/H.265	4096x4096			HE-AAC
		MPREG-4-SF/ASP	1920x1080			MP3/MP2
*.h277	H.277	H.277	1920x1080			AAC/AC3
		H.264 BP/MP/SP	1920x1080			HE-AAC
		HEVC/H.265	4096x4096			HE-AAC
		MPREG-4-SF/ASP	1920x1080			MP3/MP2
*.h278	H.278	H.278	1920x1080			AAC/AC3
		H.264 BP/MP/SP	1920x1080			HE-AAC
		HEVC/H.265	4096x4096			HE-AAC
		MPREG-4-SF/ASP	1920x1080			MP3/MP2
*.h279	H.279	H.279	1920x1080			AAC/AC3
		H.264 BP/MP/SP	1920x1080			HE-AAC
		HEVC/H.265	4096x4096			HE-AAC
		MPREG-4-SF/ASP	1920x1080			MP3/MP2
*.h280	H.280	H.280	1920x1080			AAC/AC3
		H.264 BP/MP/SP	1920x1080			HE-AAC
		HEVC/H.265	4096x4096			HE-AAC
		MPREG-4-SF/ASP	1920x1080			MP3/MP2
*.h281	H.281	H.281	1920x1080			AAC/AC3
		H.264 BP/MP/SP	1920x1080			HE-AAC
		HEVC/H.265	4096x4096			HE-AAC
		MPREG-4-SF/ASP	1920x1080			MP3/MP2
*.h282	H.282	H.282	1920x1080			AAC/AC3
		H.264 BP/MP/SP	1920x1080			HE-AAC
		HEVC/H.265	4096x4096			HE-AAC
		MPREG-4-SF/ASP	1920x1080			MP3/MP2
*.h283	H.283	H.283	1920x1080			AAC/AC3
		H.264 BP/MP/SP	1920x1080			HE-AAC
		HEVC/H.265	4096x4096			HE-AAC
		MPREG-4-SF/ASP	1920x1080			MP3/MP2
*.h284	H.284	H.284	1920x1080			AAC/AC3
		H.264 BP/MP/SP	1920x1080			HE-AAC
		HEVC/H.265	4096x4096			HE-AAC
		MPREG-4-SF/ASP	1920x1080			MP3/MP2
*.h285	H.285	H.285	1920x1080			AAC/AC3
		H.264 BP/MP/SP	1920x1080			HE-AAC
		HEVC/H.265	4096x4096			HE-AAC
		MPREG-4-SF/ASP	1920x1080			MP3/MP2
*.h286	H.286	H.286	1920x1080			AAC/AC3
		H.264 BP/MP/SP	1920x1080			HE-AAC
		HEVC/H.265	4096x4096			HE-AAC
		MPREG-4-SF/ASP	1920x1080			MP3/MP2
*.h287	H.287	H.287	1920x1080			AAC/AC3
		H.264 BP/MP/SP	1920x1080			HE-AAC
		HEVC/H.265	4096x4096			HE-AAC
		MPREG-4-SF/ASP	1920x1080			MP3/MP2
*.h288	H.288	H.288	1920x1080			AAC/AC3
		H.264 BP/MP/SP	1920x1080			HE-AAC
		HEVC/H.265	4096x4096			HE-AAC
		MPREG-4-SF/ASP	1920x1080			MP3/MP2
*.h289	H.289	H.289	1920x1080			AAC/AC3
		H.264 BP/MP/SP	1920x1080			HE-AAC
		HEVC/H.265	4096x4096			HE-AAC
		MPREG-4-SF/ASP	1920x1080			MP3/MP2
*.h291	H.291	H.291	1920x1080			AAC/AC3
		H.264 BP/MP/SP	1920x1080			HE-AAC