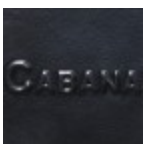


**Product No:** 9334-3-BK**Name:** Brighton Cabana Daybed**Collection:** Brighton**Material:** SolWeave® Outdoor
Wicker**Weight:** 215 lbs**Dimensions:** 60"W x 88"D x 78"H **SW:** 52" | **SHW:** 17" | **SD:** 81" | **SH:** 12"

Detail: The Brighton patio furniture collection uses SolWeave® outdoor wicker that is hand woven onto an aluminum frame. The wide style, with finishes in black, espresso flat, and drift teak flat wicker are clean and modern, giving a high end luxury look, sure to be a beautiful addition to your outdoor setting. The collection includes a variety of pieces to form multiple combinations of patio conversation sets, dining sets, and outdoor sectionals. Cushions are custom made in Toronto using your choice of Sunbrella® fabrics. Outdoor cushions are a great way to provide extra style and additional comfort. Cushions shown are 54048 Charcoal.

Frame Finishes:

Black

<https://cabanacoast.com>