

**AXOR Montreux**  
**Wall-Mounted Widespread Faucet Trim with Cross Handles, 1.2 GPM**  
 Finishes : **polished nickel**    Part no. : **16532831**



## Description

### Features

- Aerated spray
- Flow: 1.2 GPM (4.5 L/Min)
- 90° ceramic valves

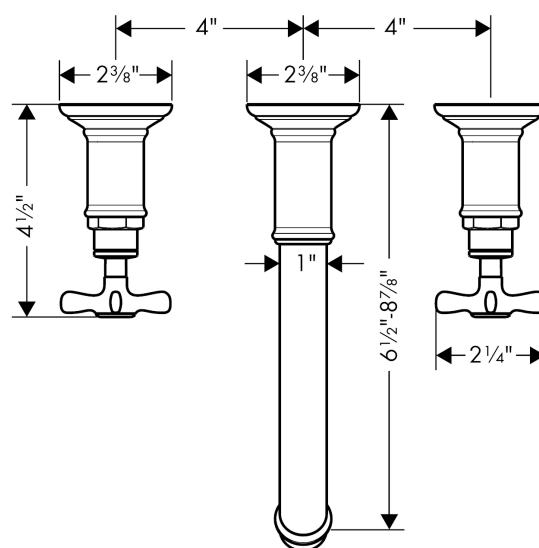
## Technology



## Product image



## Scale drawing

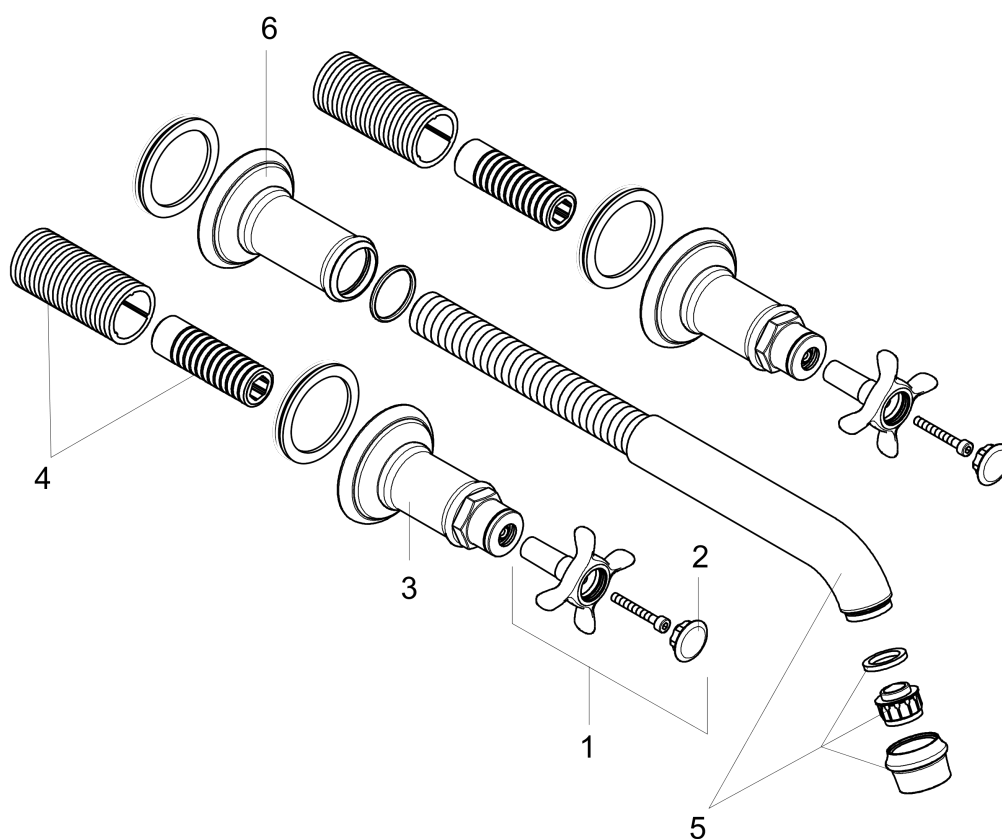


**AXOR Montreux**  
**Wall-Mounted Widespread Faucet Trim with Cross Handles, 1.2 GPM**  
 Finishes : **polished nickel**    Part no. : **16532831**



## Exploded drawing

Year of production: >07/16



**AXOR Montreux**  
**Wall-Mounted Widespread Faucet Trim with Cross Handles, 1.2 GPM**  
 Finishes : **polished nickel**    Part no. : **16532831**



## Spare parts list

Year of production: >07/16

| Pos. | Description                                     | Part no. | PC | PU |
|------|---|----------|----|----|
| 1    | handle  | 16291830 | 0  | 1  |
| 2    | set of screw covers, cold / hot water / neutral | 97987000 | 0  | 1  |
| 3    | escutcheon for handle                           | 98578830 | 0  | 1  |
| 4    | fixing set                                      | 96392000 | 0  | 1  |
| 5    | spout cpl.                                      | 98574830 | 0  | 1  |
| 6    | escutcheon for spout                            | 98576830 | 0  | 1  |
| a    | base body                                       | 10303181 | 0  | 1  |
| b    | mounting-set V+B                                | 96142000 | 0  | 1  |