



**Product No:** 70143-BM

**Name:** Arcade Bar Stool

---

**Collection:** Arcade

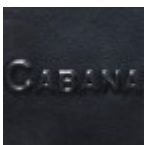
**Material:** Batyline® Sling

**Weight:** 17 lbs

**Dimensions:** 18.5"W x 22"D x 41.5"H **SW:** 18.5" | **SD:** 17" | **SH:** 31"

**Detail:** Arcade evokes the sweeping feeling of vitality and excitement in a fresh sling collection. Featuring a powder-coated aluminum frame with a contemporary leg, it articulates the concept that simplicity is truly the ultimate sophistication. Arcade is constructed with lightweight Batyline® Eden Charcoal sling on a AkzoNobel® Black aluminum or Batyline® Eden Seagull sling on a Tiger Drylac® White aluminum.

**Frame Finishes:**



Black

