

Installation Instruction

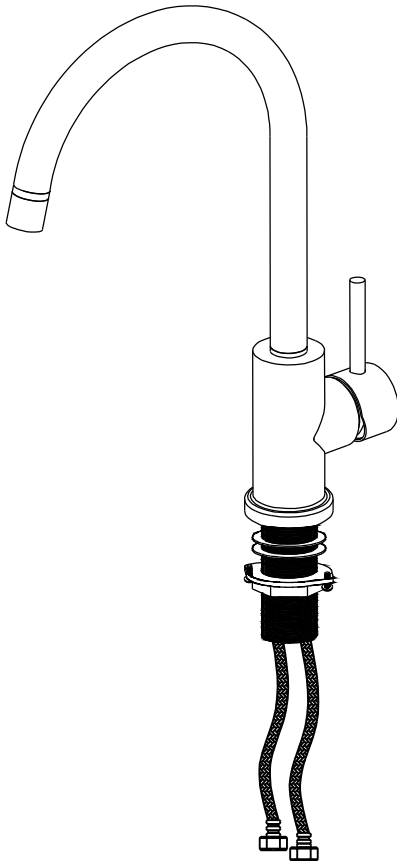
Single Handle Kitchen Faucet

LFK

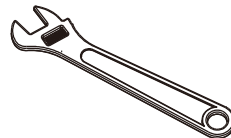


Before Your Installation

Check to make sure you have the following parts indicated below:



Tools You Will Need



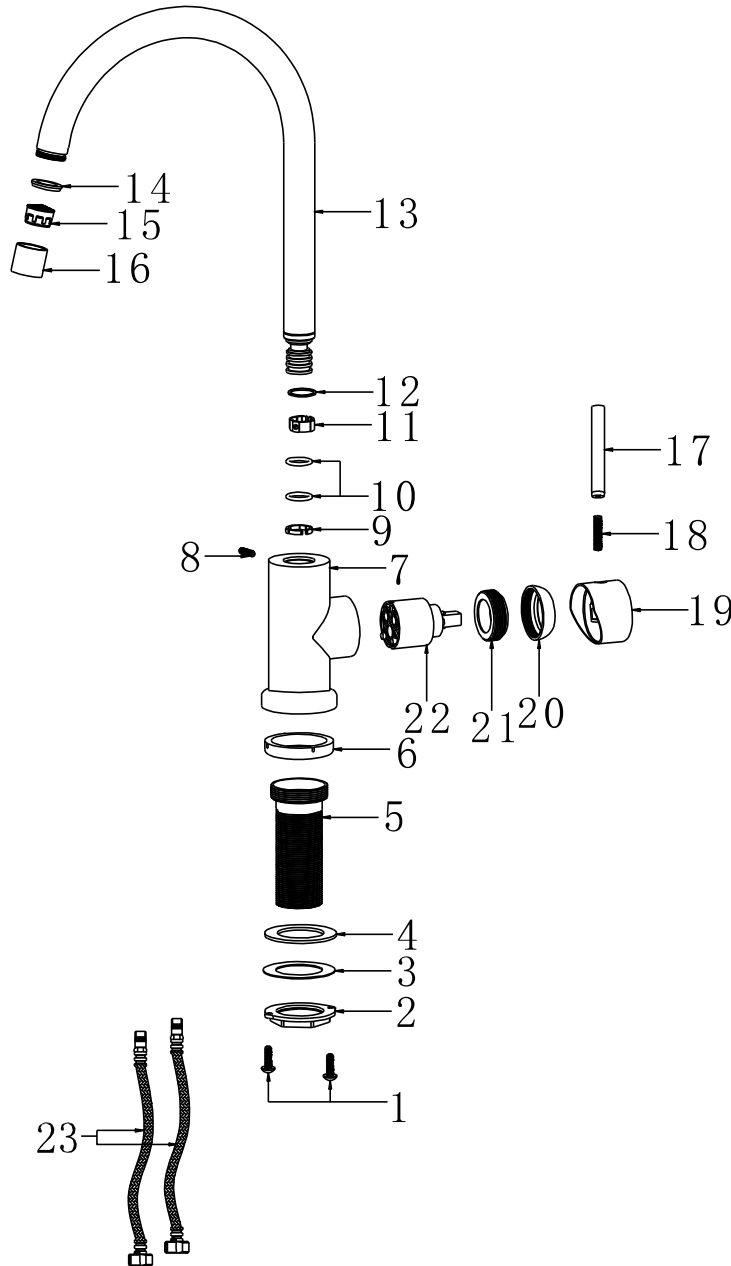
Adjustable wrench



Phillips screwdriver

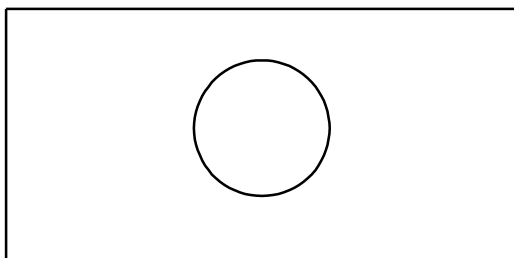
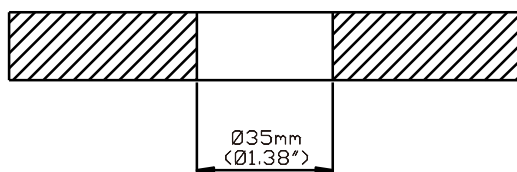
Replacement Parts

Keep this manual for ordering replacement parts.

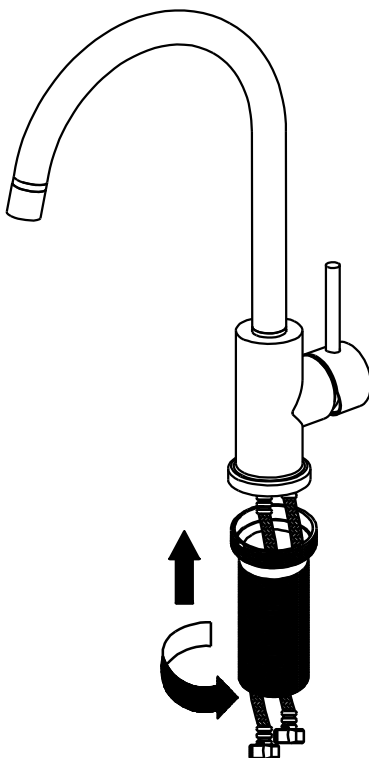


NO	NAME
1.	M5 round head screws
2.	Lock nut
3.	Stainless steel gasket
4.	Rubber gasket
5.	Threaded pipe
6.	Bottom gasket
7.	Faucet body
8.	M6 screw
9.	Plastic lock ring
10.	O-ring
11.	Plastic lock ring
12.	Rub ring
13.	Curved arm
14.	Gasket
15.	Aerator
16.	Aerator holder
17.	Handle bar
18.	M6 screw
19.	Handle knob
20.	Cartridge cover
21.	Locking nut
22.	Cartridge
23.	Hose

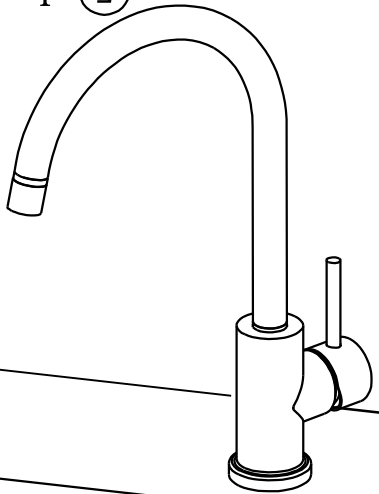
Faucet Installation Procedures



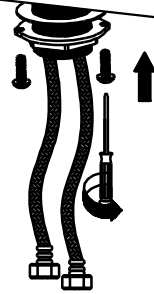
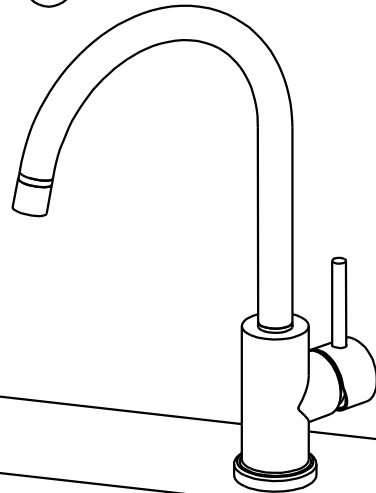
step ①



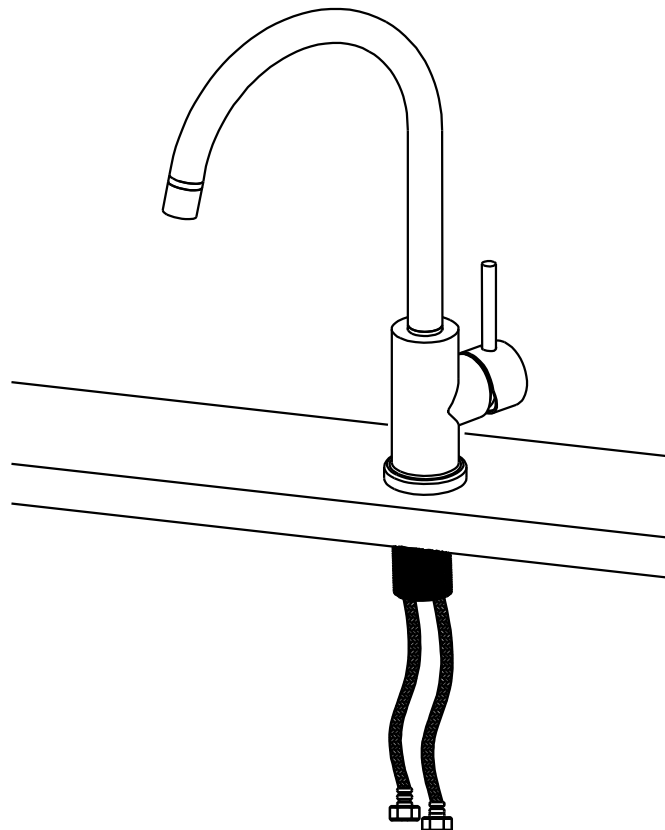
step ②



step ③



step ④



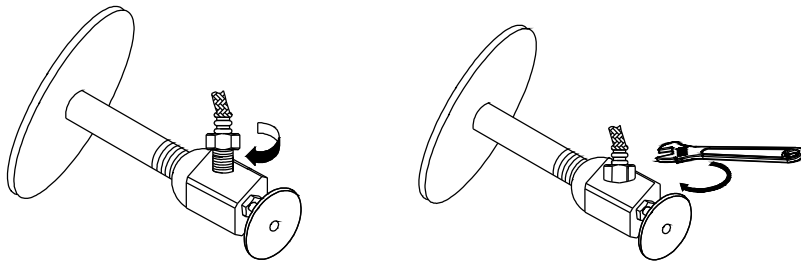
IMPORTANT!

step ⑤

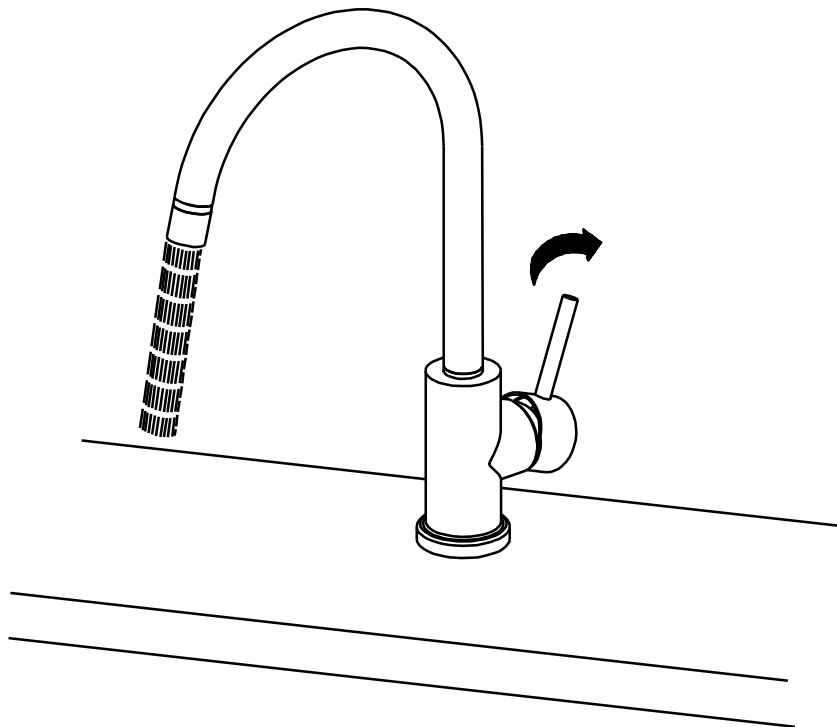
Run water out of Hot and Cold angle valves to flush debris **BEFORE** connecting the water supply lines.

Place a bucket under the valve. When valve is turned on water will shoot up. Cup over the valve opening so water will fall into the bucket.

Connect Hot & Cold water lines to angle valves. Tighten securely, but do not overtighten.



step ⑥



Critical Maintenance: Protect Your LPFK During Winter

Why Winterizing Is Essential

As outdoor temperatures fall below freezing, any water left inside your LPFK faucet can solidify and expand. This expansion can cause cracked pipes, damaged cartridges, and compromised faucet components, resulting in costly repairs and potential water damage. Proper winterization is a preventive measure that safeguards your faucet and your entire plumbing system.

Step-by-Step Guide to Winterizing

1. Shut Off the Water Supply

- Locate the shut-off valve that controls water flow to your outdoor faucet. This is typically found inside your home or beneath the sink.
- Turn off the valve to prevent water from entering the faucet during freezing conditions.

2. Disconnect and Drain the Faucet

- Open the faucet to release any residual water.
- If a hose or sprayer is attached, disconnect it and ensure it is fully drained.

3. Remove Remaining Water (Optional but Strongly Recommended)

- Use compressed air to clear out any remaining water from the faucet and supply line.
- This step is particularly beneficial for faucets with extended or complex plumbing runs, where water may be trapped.

4. Inspect for Leaks or Structural Damage

- Carefully examine the faucet and surrounding plumbing for cracks, leaks, or signs of wear.
- Addressing issues early helps prevent failures during the winter months.

5. Insulate the Faucet

- Apply a foam faucet cover or wrap the faucet with weatherproof insulating material.
- Ensure the insulation is securely fastened and moisture-resistant to provide maximum protection against freezing temperatures.

Pro Tip:

Schedule your winterization in late fall, before nighttime temperatures consistently drop below 32°F (0°C). Early action ensures your faucet is protected before the first freeze.

Lynx Professional Outdoor Faucet (LFK) Ten Year Limited Warranty

Lynx Grills, Inc. warrants its Lynx Professional Outdoor Faucet to be free of manufacturing defects in materials and workmanship during normal residential outdoor use for ten years for the original date of purchase. This warranty applies only to Lynx Grills, Inc. Pro Series Faucets installed in the United States or Canada.

Lynx Grills, Inc. also warrants all other aspects of the Lynx Pro Series Faucet to be free of defects in material and workmanship during normal outdoor residential use for the shorter of ten years or as long as the original purchaser owns his or her home. If a manufacturer defect is found in normal outdoor residential use within ten years of purchase, Lynx Grills, Inc. will, at its sole discretion, repair, provide a replacement part or product, or make appropriate adjustment. Damage to the Faucet caused by accident, misuse, abuser, or acts of God are not covered by this warranty. Improper care or cleaning with caustic or abrasive materials will void the warranty. Commercial or marine applications are not covered by this warranty. Proof of purchase in the form of the original sales receipt must be provided to Lynx Grills, Inc. with all warranty claims. After ten years from the original purchase date, if the Faucet is in need of repair or replacement, the customer will be responsible for the cost and shipping of parts or product. Lynx Grills, Inc. is not responsible for labor charges, installation, or other incidental or consequential costs. In no event shall the liability of Lynx Grills, Inc. exceed the retail purchase price of the Faucet. For more information visit our website at www.lynxgrills.com, or contact our Customer Care Group at 1.888.289.5969