



Xtension 10

Highend turntable with 10" EVO
tonearm

n/c MSRP 3500 € (inkl. VAT)

Cadenza Black MSRP 4700 € (inkl. VAT)

- Super-heavy 22 kg belt drive turntable
- Mass loaded magnetic floating subchassis
- Precision balanced sandwich-platter
- Inverted ceramic ball bearing with magnetic support
- Heavy weight record clamp
- Extremely low level of natural resonance
- Perfect decoupling through magnetic feet
- Electronic speed control 33/45/78 Upm
- Tonearm 10cc Evolution made from carbon fibre
- Inverted tonearm bearings (ABEC 7 quality)
- Phono cable included: 5pin > RCA or 5pin > XLR
- Dustcover included

Colour options:



Speed: 33 / 45 / 78 Upm (Speed Box DS built-in)

Platter weight: 10,5 kg

Turntable bearing damping: heavy weight metal block

Max. speed variance: $\pm 0,08\%$

Max. wow and flutter: $\pm 0,08\%$ Max.

Rumble: -73dB

Effective arm length / overhang: 254mm / 16mm

Effective tonearm mass: 8,5g

Tracking force range: 10-30mN

Cartridge weight range: 4 - 14g (4 counterweights incl.)

External power supply (prim/sec): 220 - 240V/50Hz /
15V/1.000mA DC

Power consumption: 2W

Included accessories: Dustcover, Connect it 5P-C > RCA

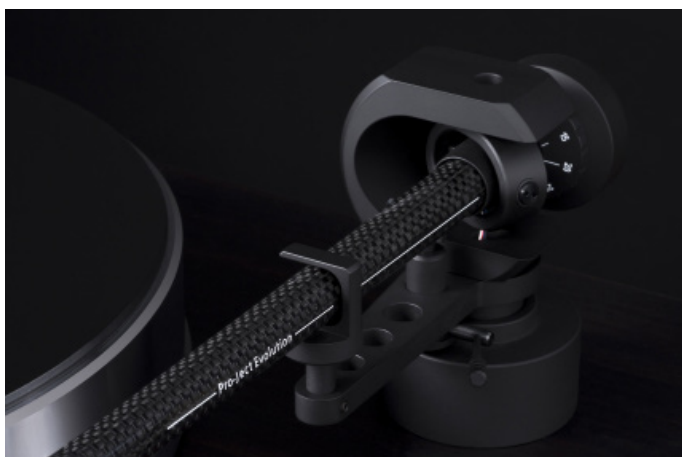
Dimensions lid closed: 480 x 235 x 400mm WxHxD

Dimensions lid opened: 480 x 495 x 535mm WxHxD

Weight: 18kg

The little brother of Xtension guarantees superlative vinyl performance in a more compact size!

Xtension 10 Evolution is ideal for all, who look for sound quality of standard Xtension in a more compact size below 48cm width, to fit standard audio racks. It incorporates all of our 25 years experience in turntable design. Xtension 10 chassis is made from MDF filled with metal sand, that gives high mass and is non-resonant. Magnetic feet, which decouple the main plinth from its base, are combined with a weighty 22kg total turntable mass. The result is a unique combination of 'mass loaded' and 'floating turntable' design principles.



Instead of the old standard adoption of pure metal used for the main platter, we've found a perfect alloy which we damped on the inner side with Sorbothane®. Additionally we've glued recycled Vinyl records to the top (which act as a perfect mat) and bake this 'sandwich' before precision balancing it. The final product subsequently benefits from a wonderfully resonance-free, heavy platter, that runs ultra-silently on an inverted ceramic ball bearing with magnetic suspension.



The Pro-Ject 10cc Evolution with its tonearm base also benefits from 'high-mass' technologies, and is isolated from the main board by a sheet of Sorbothane®. To use this tonearm with a wide range of top quality phono cartridges, from 4 to 14g. it comes with a set of 4 different Sorbothane®- damped counterweights. Xtension 10 Evolution comes with a beautiful dustcover with adjustable hinges, as well as in five high gloss finishes: walnut, eucalyptus, mahogany, olive, palisander, black piano, white and red.



Walnut



Eucalyptus



Black piano



Mahogany



Olive



Palisander



Red



White