



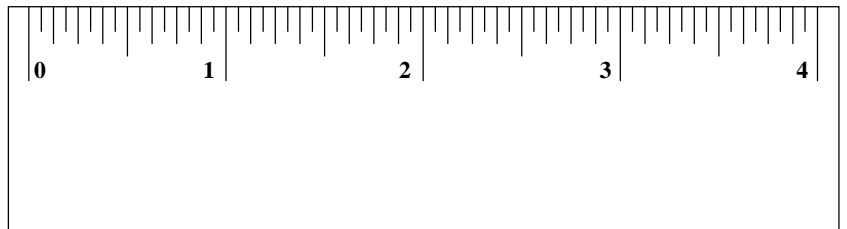
ASSEMBLY INSTRUCTIONS

B1248-040 LENNOX 2 DRAWER NIGHTSTAND

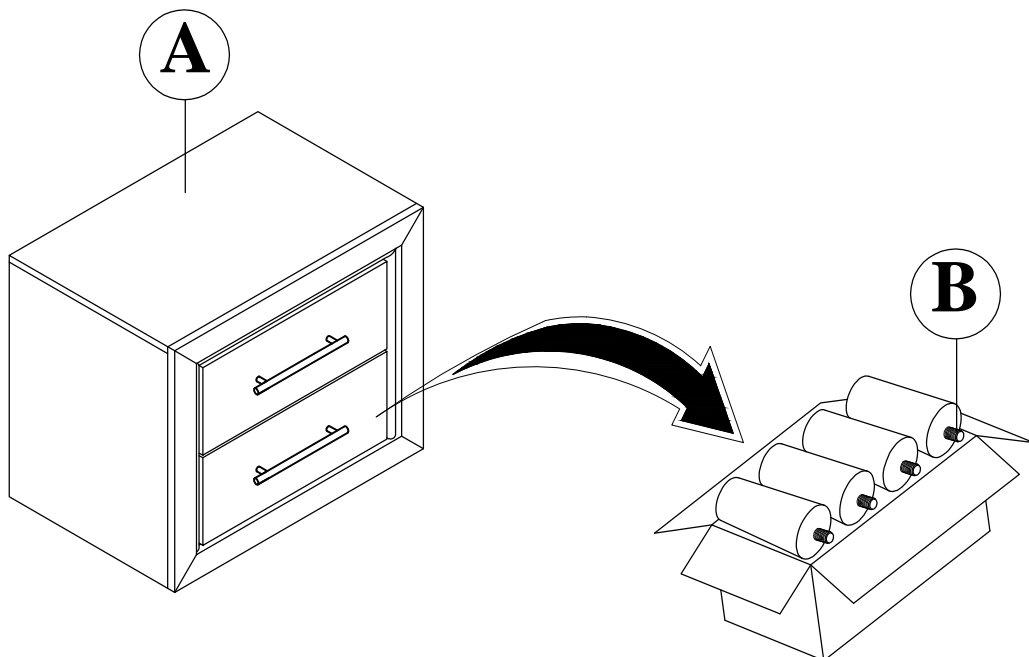
Thank you for purchasing this quality product. Be sure to check all packing materials carefully for small parts, which may have come loose inside the carton during shipment. Identify and count all items and compare with the parts list and/or hardware list shown.

PARTS LIST

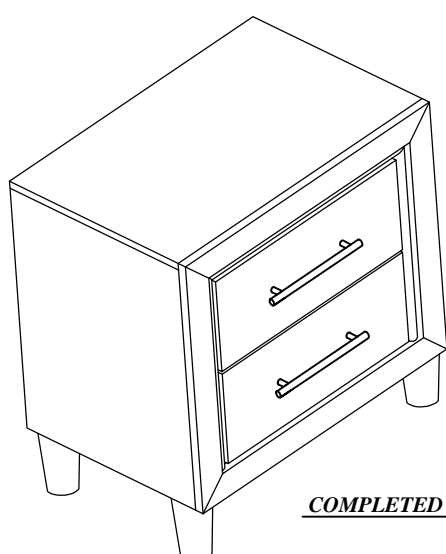
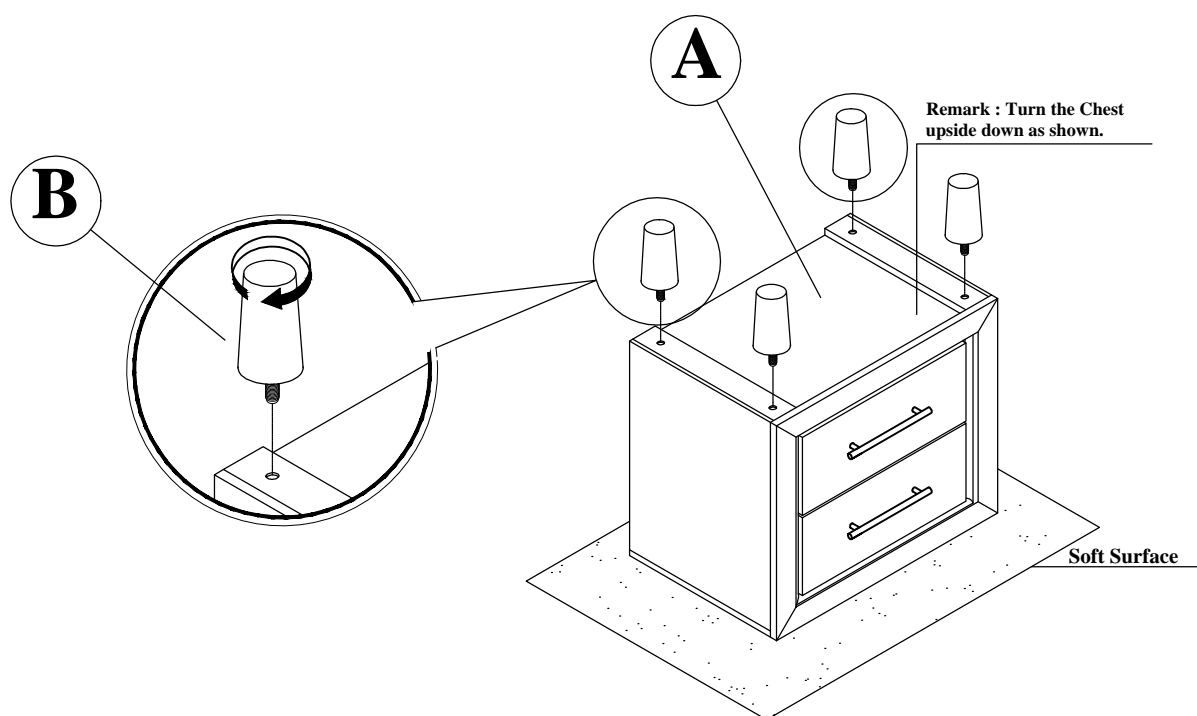
NO	COMPONENT	DRAWING	QTY
A	Nightstand		1 pc
B	Leg		4 pcs



STEP 1 : Locate the Legs (B) from the bottom drawer of the Nightstand (A).



STEP 2 : Place the Nightstand (A) upside down on a clean and flat surface. Assemble the Leg (B) with Nightstand (A) by twisting each leg into the corresponding hole until securely tightened.



COMPLETED ASSEMBLY