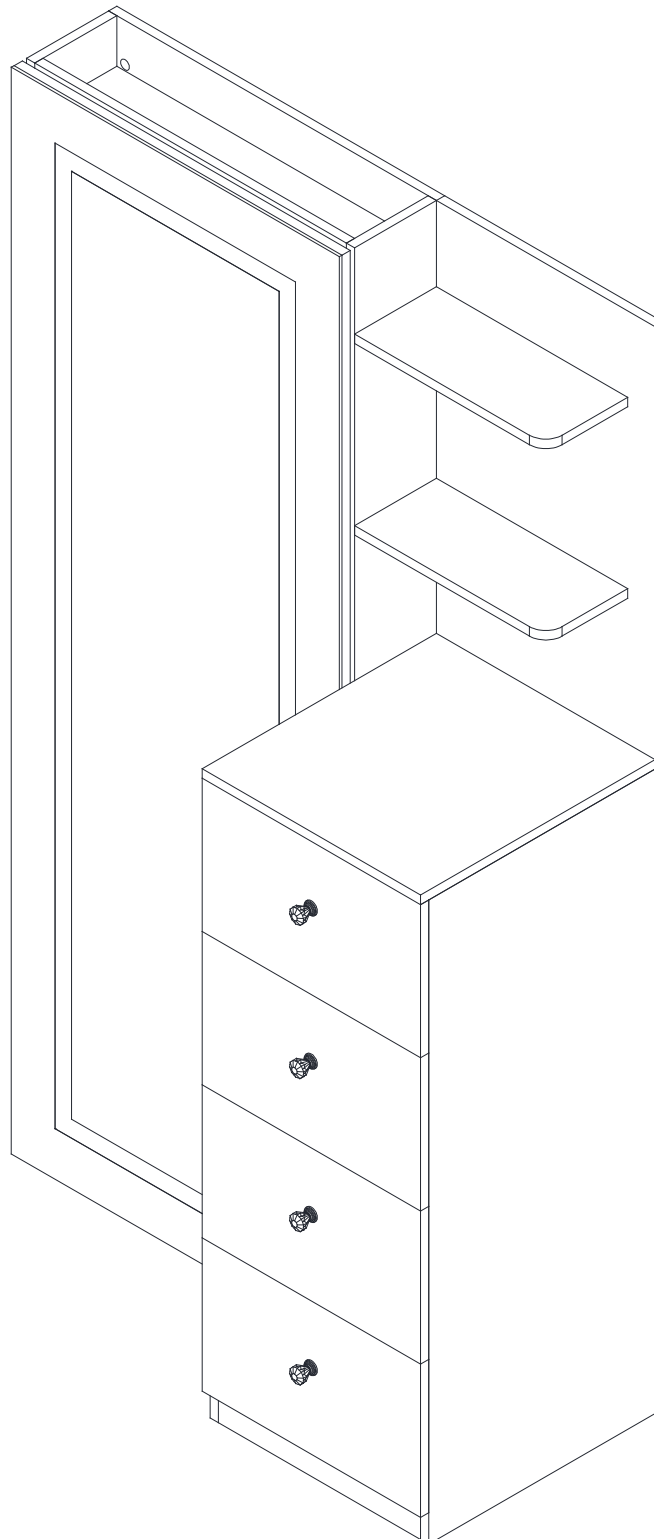


Assembly Instruction

Vancouver Floor Mirror With Storage

ITEM # A-17310-7-FM

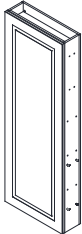
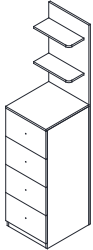
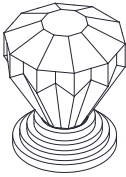
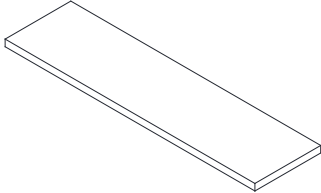
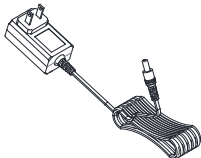


Assembly Instruction for

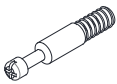



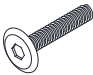


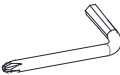
Item: A-17310-7-FM

CAUTION: Please read instructions thoroughly before unpacking assembly parts.

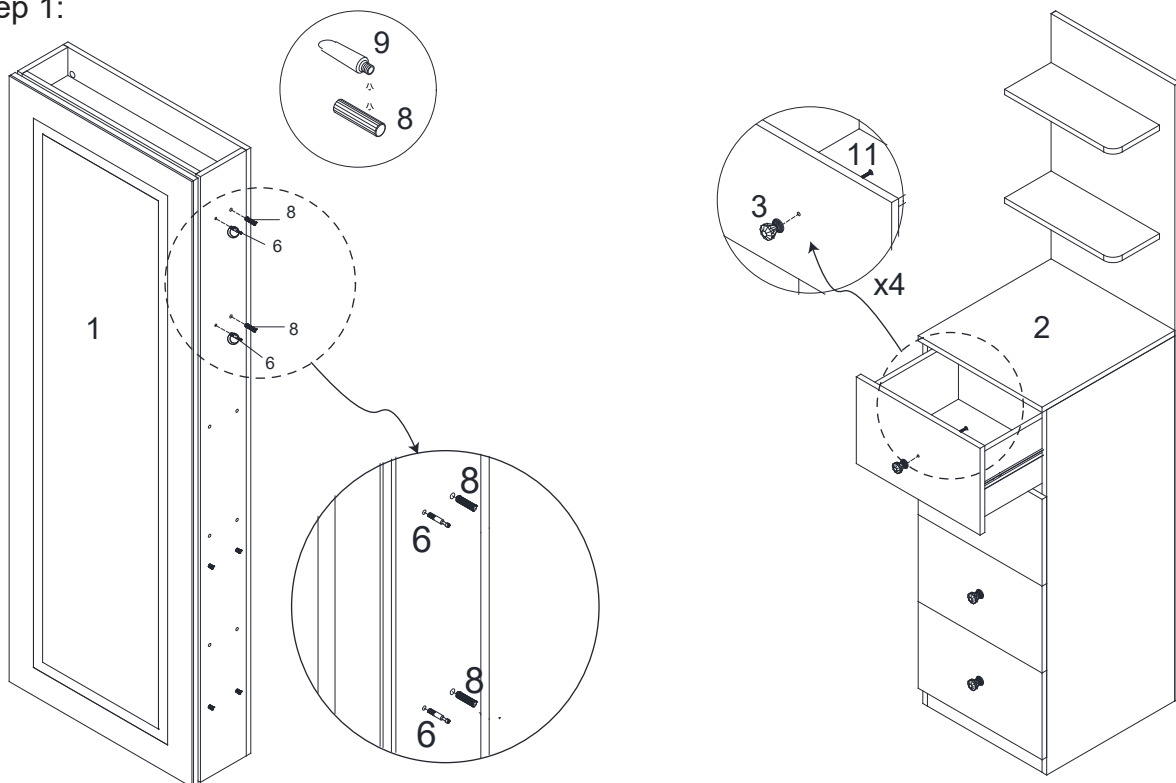
1. Be sure to check all packing materials carefully for small parts that may have come loose inside the carton during shipment.
2. Please put all parts on a non-abrasive floor before assembly, and follow the assembly steps to assemble your newly purchased product correctly and efficiently.
3. Please do not tighten screws or bolts until each step is completed or instructed.
4. Please do not over tighten screws or bolts.

PART LIST				
No.	SKETCH	PART DESC	CODE	Q'TY
1		Mirror Case		1
2		Storage Case		1
3		Knob	PA-17310-FMKNB	4
4		Adjustable Panel	PA-17310-7-FMSHF1	2
5		Power Adapter	PA-17310-FMADT	1

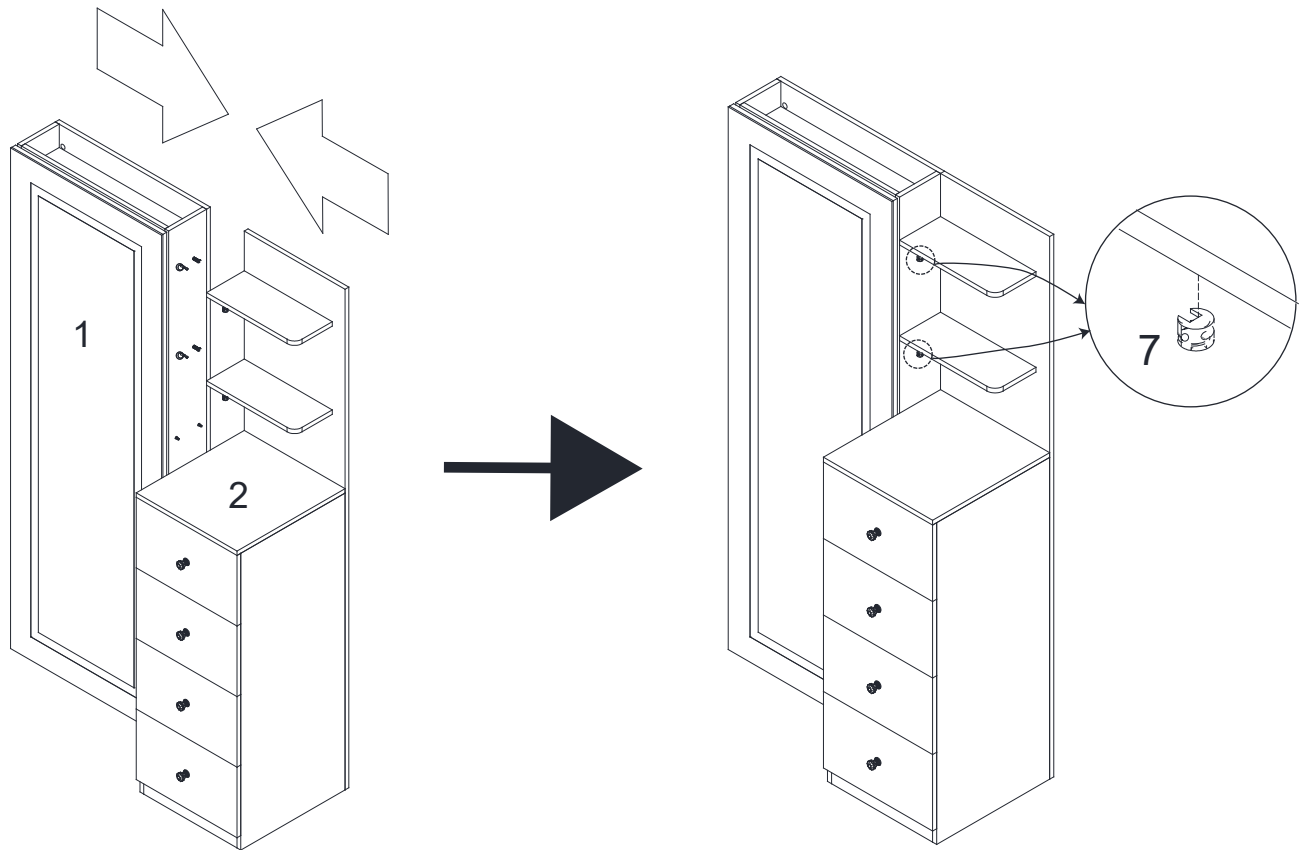
PART LIST

No.	SKETCH	PART DESC	CODE	Q'TY
6		Cam Bolt	A-17310-7-FMHW	2
7		Cam Lock		2
8		Wood Dowel		2
9		Glue		1
10		Bolt		6
11		Handle Bolt 5/32" x 22mm		4
12		Shelf Pin		8
13		Allen Key 4mm		1

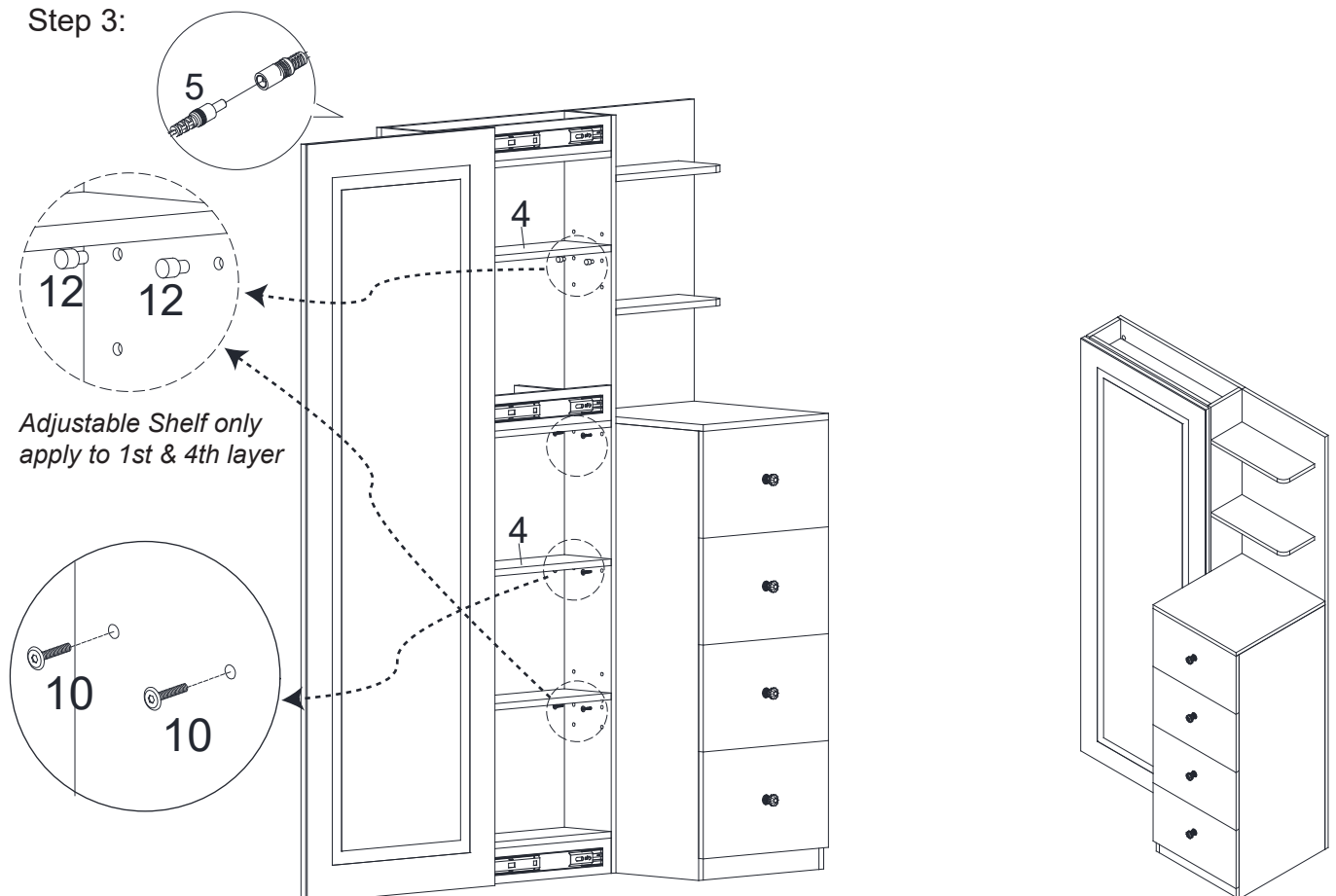
Step 1:



Step 2:



Step 3:



Assembly completed.