

ASSEMBLY INSTRUCTION

BE6046-18HF

BE6046-17R

Thank you for purchasing this quality product. Be sure to check all packing materials carefully for small parts that may have come loose inside the carton during shipment.


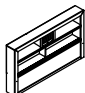




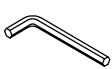

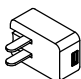


Before you start assembly: Please read all instructions carefully before beginning the assembly process. It is recommended that 2 people work together during assembly to prevent personal injury and to ensure that heavy or cumbersome parts are not damaged during the process.

CAUTION: For your safety, this product requires two people to lift.

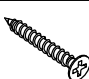
TOOL REQUIRED (NOT PROVIDED):
PHILLIPS SCREWDRIVER

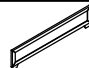

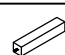


FULL HEADBOARD


HARDWARE LIST				PART LIST			
			QTY				QTY
A	Allen bolt Ø1/4"x20x1-1/4"		16 pcs		Headboard		1 pc
B	Washer Ø1/4"xØ7/16"x1/16"		16 pcs		Headboard Post(L+R)		2 pcs
C	Spring washer Ø1/4"xØ5/8"x1/16"		16 pcs		Headboard Bottom Rail		1 pc
D	L Wrench 1/4"		1 pc		Support		2 pcs
E	USB Power		1 pc		Door		3 pcs
F	Bumper card		10 pcs				

FULL FOOTBOARD W / SLATS

HARDWARE LIST			QTY
G	Screw Ø8 x 1-1/2"		10 pcs

PART LIST			QTY
	Footboard		1 pc
	Slats		5 pcs
	Support Leg		5 pcs

FULL / TWIN RAILS

HARDWARE LIST		QTY	PART LIST		QTY
			SIDE RAILS		2 pcs

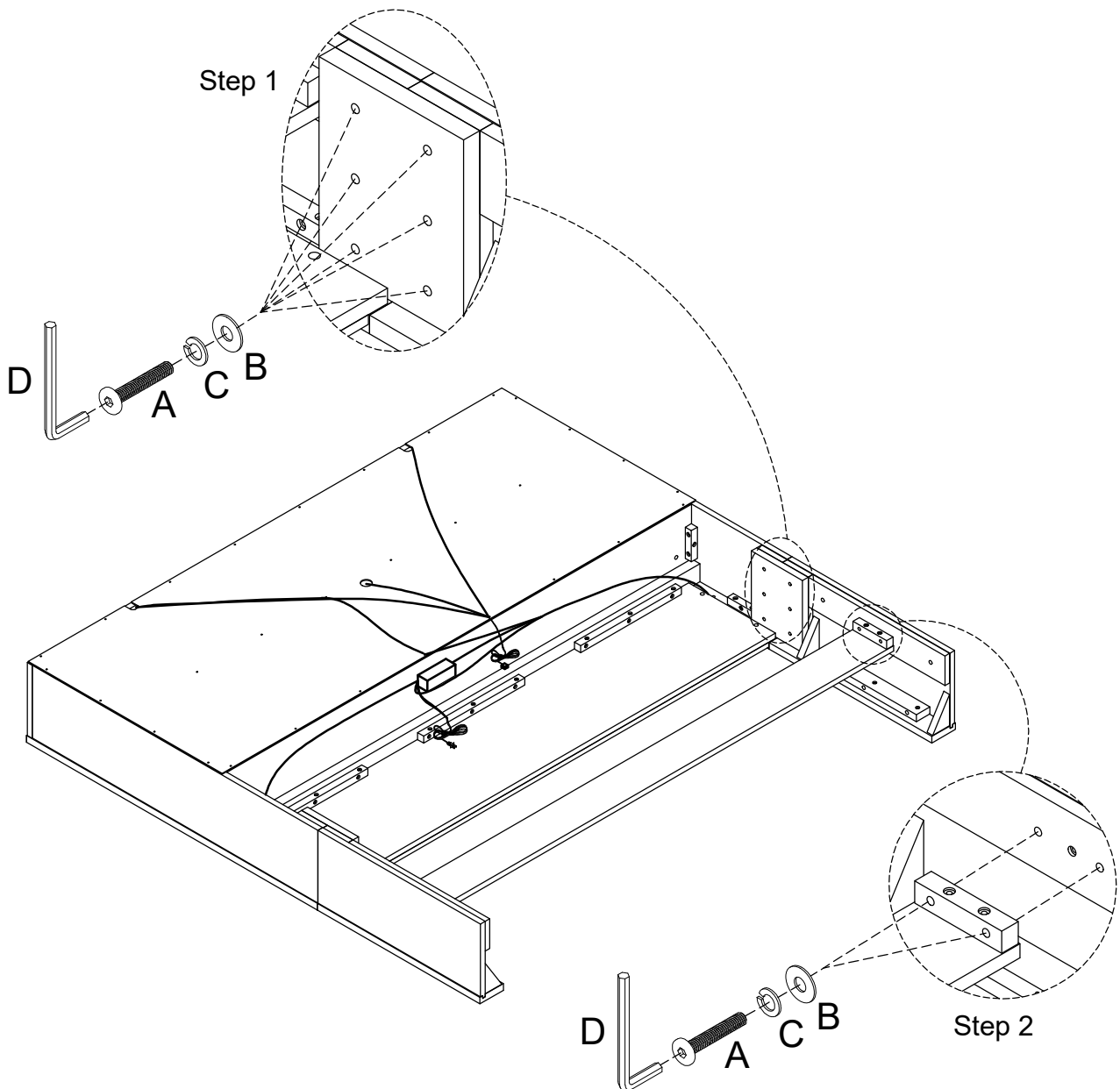
ASSEMBLY INSTRUCTION

BE6046-18HF
BE6046-17R

Thank you for purchasing this quality product. Be sure to check all packing materials carefully for small parts that may have come loose inside the carton during shipment.

Before you start assembly: Please read all instructions carefully before beginning the assembly process. It is recommended that 2 people work together during assembly to prevent personal injury and to ensure that heavy or cumbersome parts are not damaged during the process.

CAUTION: For your safety, this product requires two people to lift.



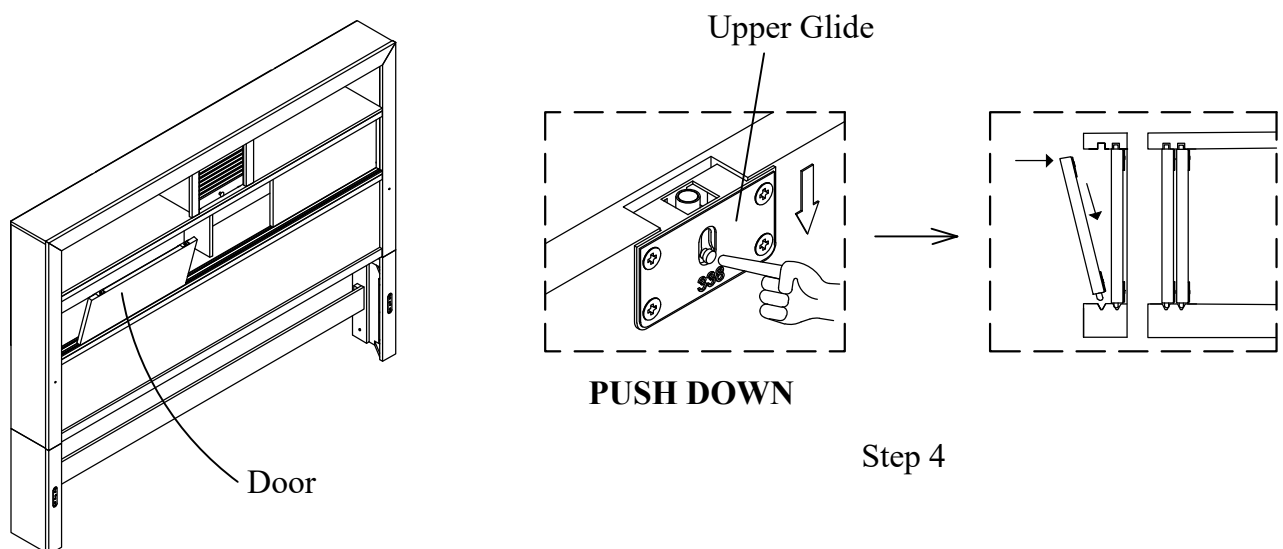
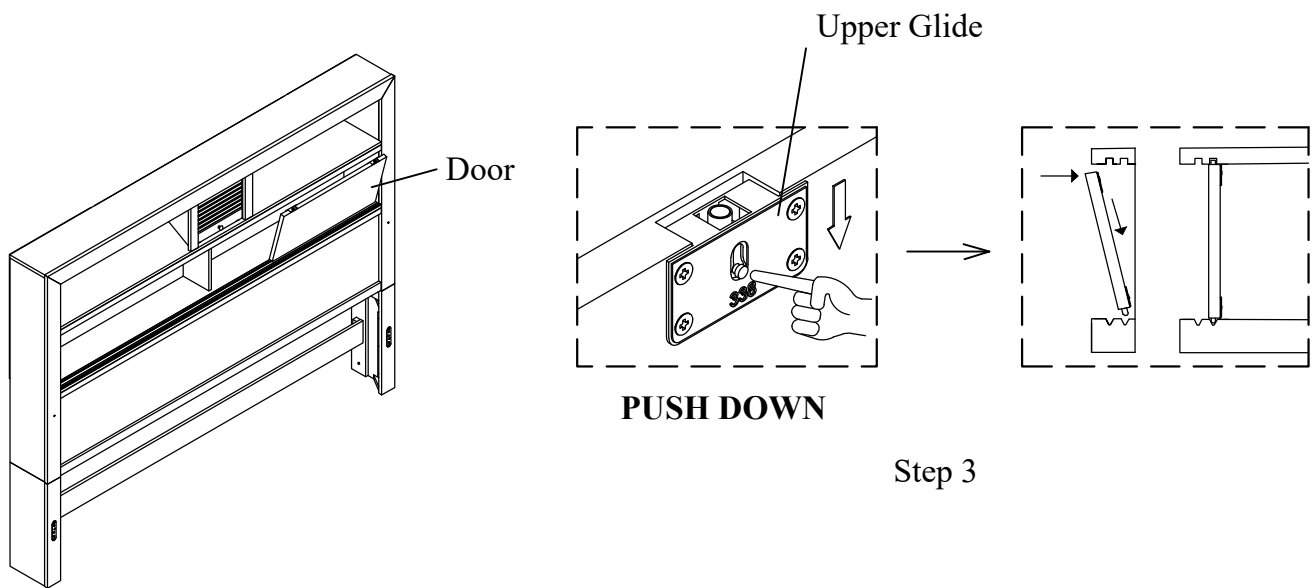
ASSEMBLY INSTRUCTION

BE6046-18HF
BE6046-17R

Thank you for purchasing this quality product. Be sure to check all packing materials carefully for small parts that may have come loose inside the carton during shipment.

Before you start assembly: Please read all instructions carefully before beginning the assembly process. It is recommended that 2 people work together during assembly to prevent personal injury and to ensure that heavy or cumbersome parts are not damaged during the process.

CAUTION: For your safety, this product requires two people to lift.



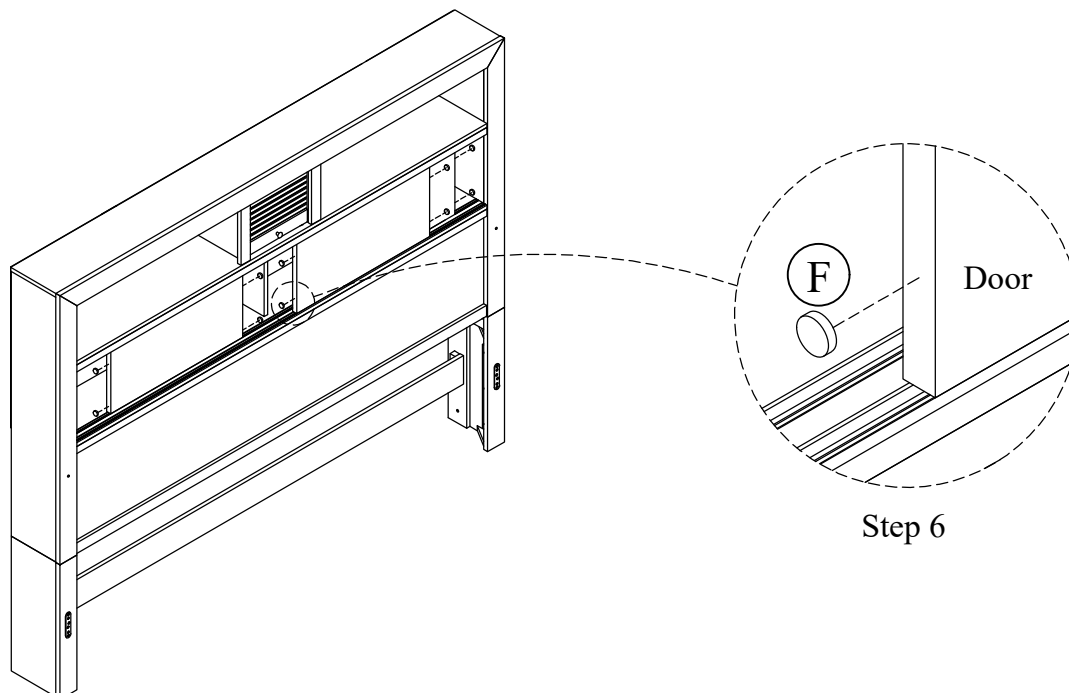
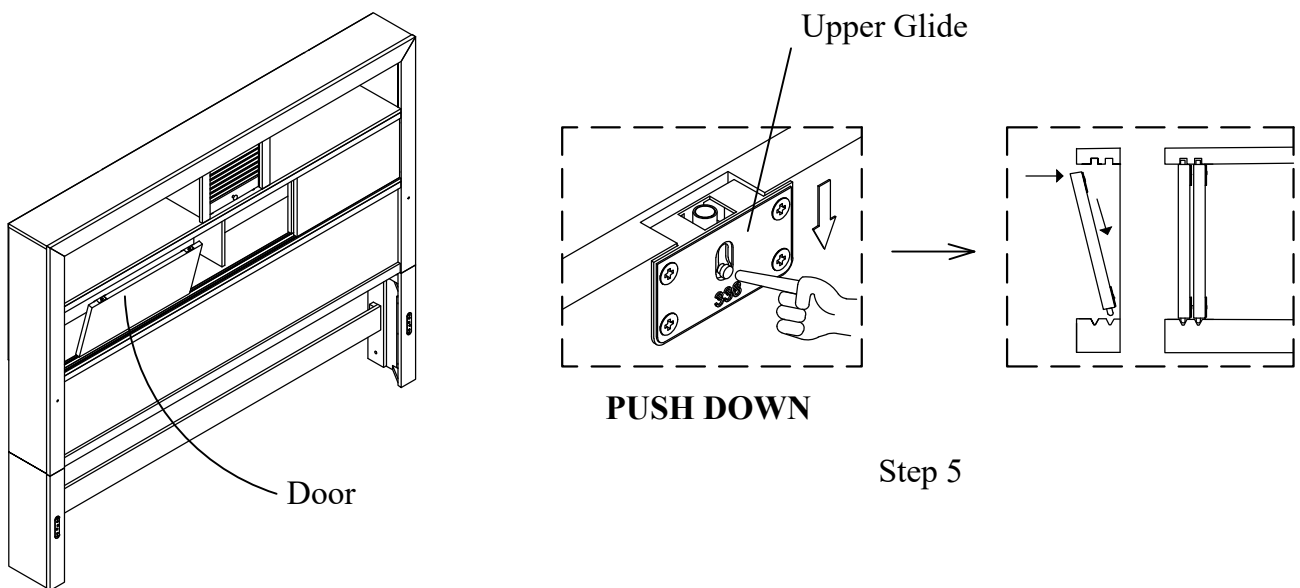
ASSEMBLY INSTRUCTION

BE6046-18HF
BE6046-17R

Thank you for purchasing this quality product. Be sure to check all packing materials carefully for small parts that may have come loose inside the carton during shipment.

Before you start assembly: Please read all instructions carefully before beginning the assembly process. It is recommended that 2 people work together during assembly to prevent personal injury and to ensure that heavy or cumbersome parts are not damaged during the process.

CAUTION: For your safety, this product requires two people to lift.



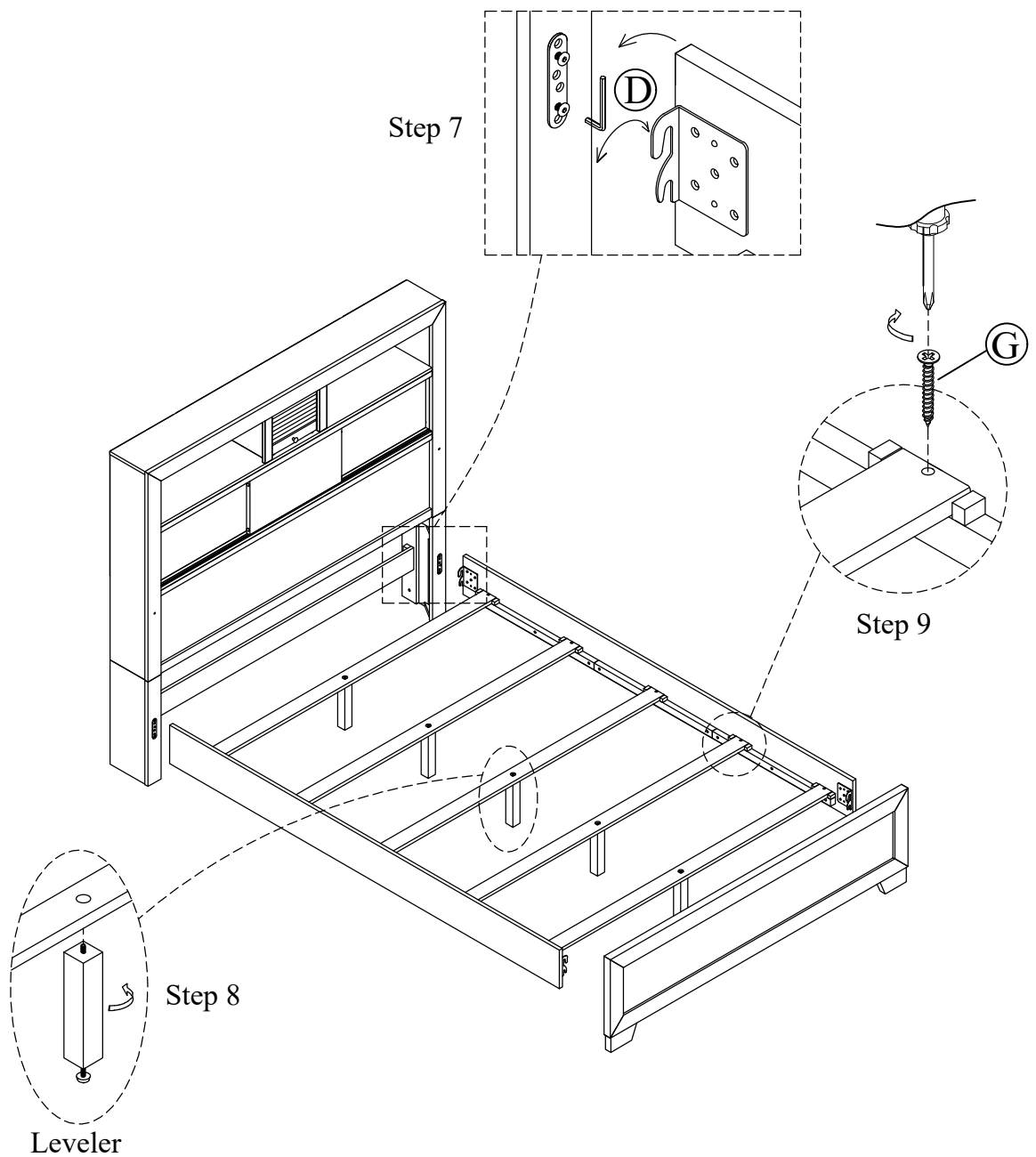
ASSEMBLY INSTRUCTION

BE6046-18HF
BE6046-17R

Thank you for purchasing this quality product. Be sure to check all packing materials carefully for small parts that may have come loose inside the carton during shipment.

Before you start assembly: Please read all instructions carefully before beginning the assembly process. It is recommended that 2 people work together during assembly to prevent personal injury and to ensure that heavy or cumbersome parts are not damaged during the process.

CAUTION: For your safety, this product requires two people to lift.



ASSEMBLY INSTRUCTION

BE6046-18HF

BE6046-17R

Thank you for purchasing this quality product. Be sure to check all packing materials carefully for small parts that may have come loose inside the carton during shipment.

Before you start assembly: Please read all instructions carefully before beginning the assembly process. It is recommended that 2 people work together during assembly to prevent personal injury and to ensure that heavy or cumbersome parts are not damaged during the process.

CAUTION: For your safety, this product requires two people to lift.

