

# CAXTON GROVE

## TIGHT TOP PLUSH

### Coil System

2150 Pocket Coil with Airflow Surround Encasement

Posturized Centre Support with Motion Separation Foam

### Mattress Quilting

Hand Tufted  
Cool Touch Fabric  
22 oz. Joma Wool  
1/2" Micro Gel Plush Foam  
1/2" Plush Foam  
1/2" Plush Foam

### Comfort Layers / Upholstery

1" Plush Latex  
Joma Wool  
Cotton  
Horsehair

### Top of Coil

2" Plush Foam

### Bottom of Coil

1" Firm Foam

### Panel Fabric

Kerby

### Border Fabric

Valor

### Foundation Fabric

Black Suede

### Foundation Construction

Kingsdown Foundation

### Warranty

10 Years



#### COOL TOUCH FABRIC

Made with cooling fibres and helps to regulate body temperature



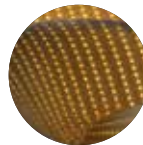
#### JOMA WOOL

Allows increased airflow and less compaction of the fibres to provide a cooler, restful sleep.



#### PLUSH MICRO GEL

High density quilting foam helps dissipate heat away from the body.



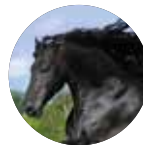
#### LATEX

Resilient latex enhances pressure relief and maximizes support



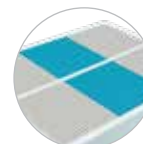
#### COTTON

Breathable, soft cotton for healthy sleep



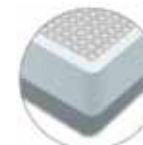
#### HORSEHAIR

Channels away moisture to let fresh air in and out while masterfully cradling your body.



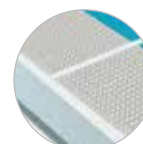
#### POSTURIZED CENTRE SUPPORT

Provides increased support and proper alignment of your spine.



#### FULL BODY SURROUND

For increased sleeping surface, a strong sitting edge and enhanced cooling.



#### MOTION SEPARATION FOAM

Isolates partner's movement to provide the best in undisturbed sleep.

#### MATTRESS HEIGHT: 14"

| Size        | Twin | Double | Queen | King |
|-------------|------|--------|-------|------|
| Pocket Coil | 1290 | 1828   | 2150  | 2730 |