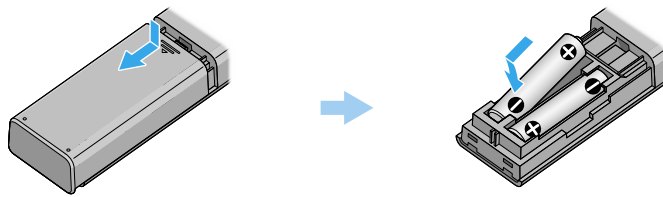




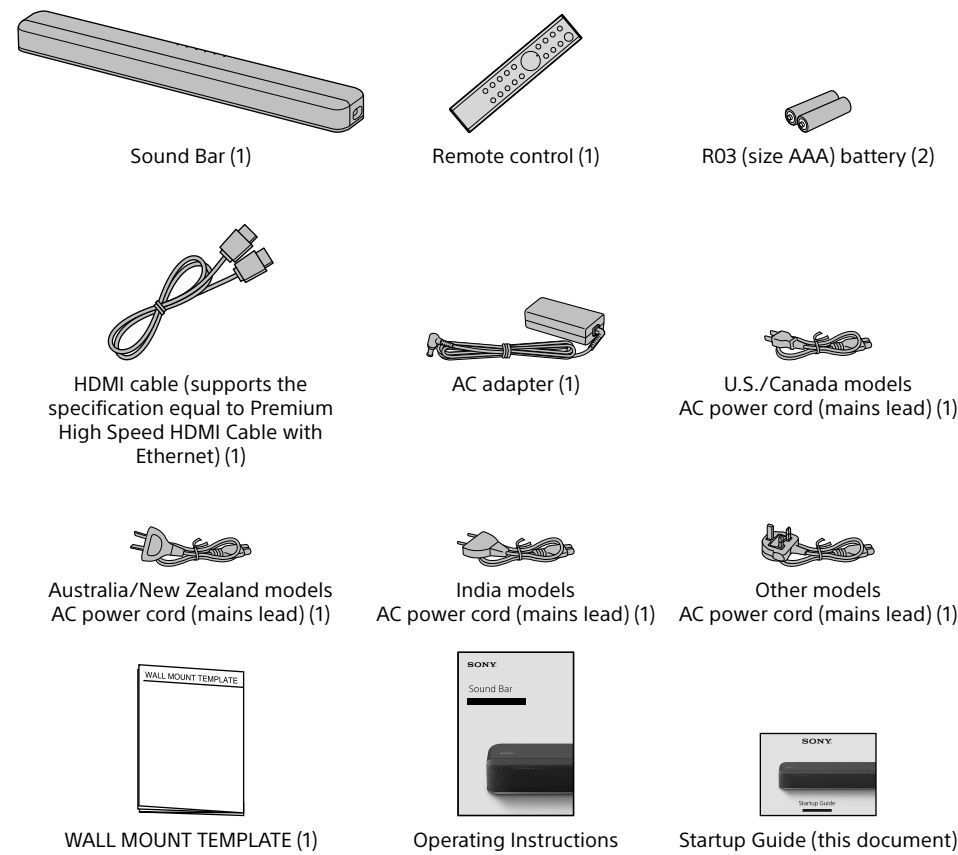
Startup Guide

Sound Bar : HT-X8500

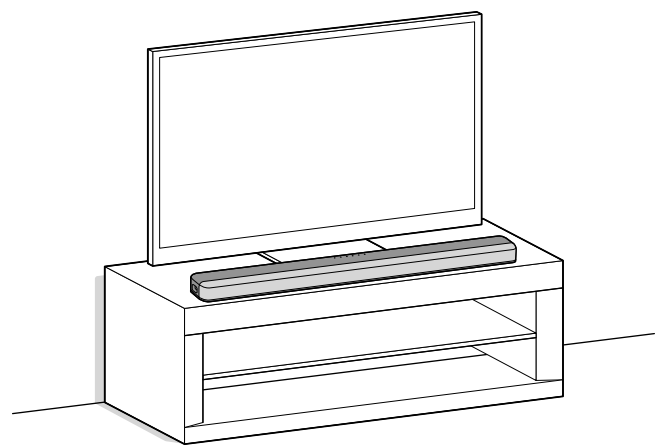
To set up the remote control



What's in the box



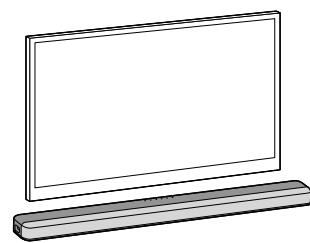
1 Deciding the installation position



- Note**
- Do not place magnetic cards on the Sound Bar or near the Sound Bar.
 - Do not cover the top of the Sound Bar with metal objects such as a TV frame, etc. Wireless functions may become unstable.
 - Do not place metal objects around the Sound Bar. Wireless functions may become unstable.

To mount the Sound Bar on a wall

Refer to "Mounting the Sound Bar on a Wall" in the Operating Instructions (separate document).



2 Selecting the TV connection method

Connect a TV with the HDMI cable (supplied)



Go to Step 3

Connect a Sony TV with the BLUETOOTH function wirelessly

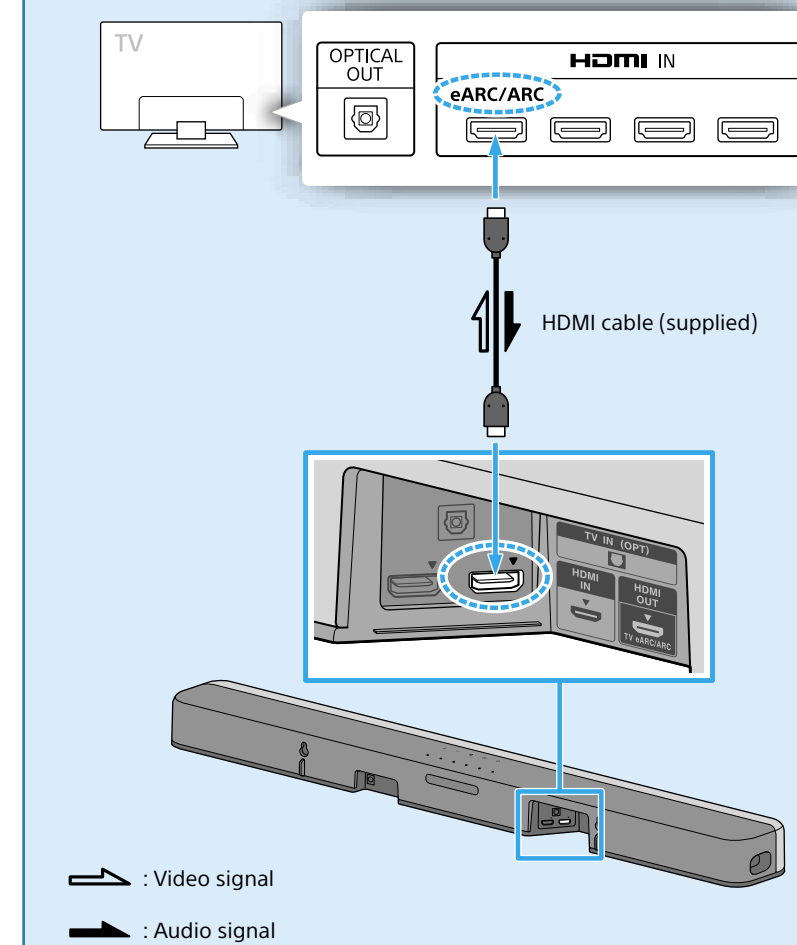


Operating Instructions (separate document)

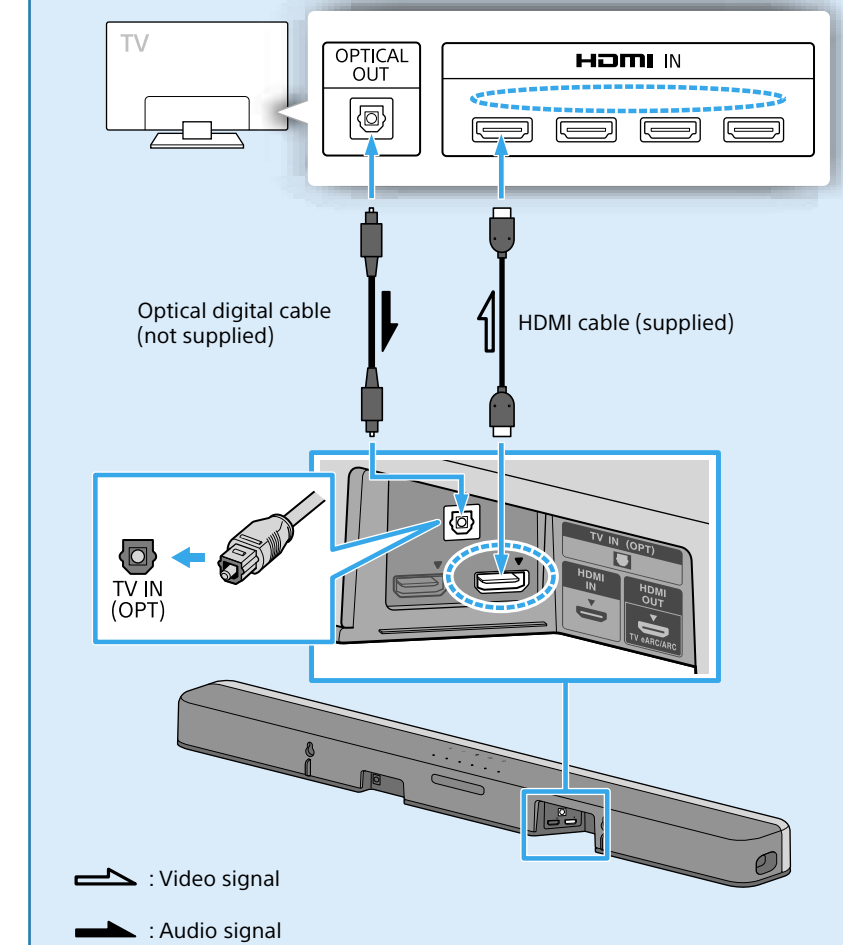
3 Connecting a TV

Are there any HDMI IN jacks labeled "eARC" or "ARC" on your TV?

YES



NO

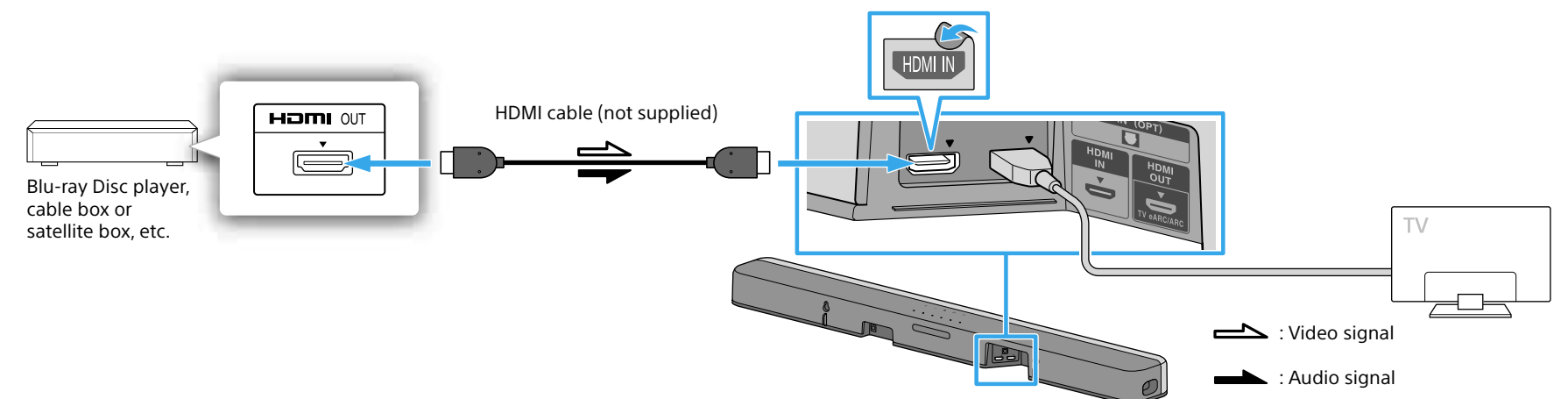


Note

- Make sure that the cable is firmly inserted.
- If you select "YES," enable the Control for HDMI function on the TV. Otherwise, there will be no TV sound output from the Sound Bar.
- If you select "NO," connect the TV and the Sound Bar with not only the HDMI cable (supplied), but also an optical digital cable (not supplied). Otherwise, there will be no TV sound output from the Sound Bar. Check the shape of the optical digital cable's connectors and the jacks on the TV and the Sound Bar. Insert the connectors into the jacks in the right directions. If you forcibly insert the connectors in the wrong directions, the connectors and the jacks may be damaged.
- To watch 4K video content, refer to "Connecting a 4K TV and 4K Devices" in the Operating Instructions (separate document).

4 Connecting another device

When a Blu-ray Disc™ player, cable box, satellite box, etc. is currently connected to your TV, disconnect the device from the TV and then connect it to the HDMI IN jack on the Sound Bar to reproduce the high quality surround sound such as Dolby TrueHD, DTS-HD, etc. If your TV is compatible with the eARC function, you may be able to listen to high quality surround sound while devices are connected to the TV. For details, refer to the Operating Instructions (separate document) and the operating instructions supplied with the TV.



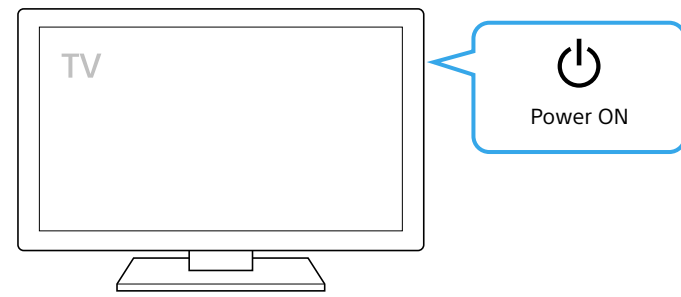
Note

- Make sure that the cable is firmly inserted.
- To watch 4K video content, refer to "Connecting a 4K TV and 4K Devices" in the Operating Instructions (separate document).

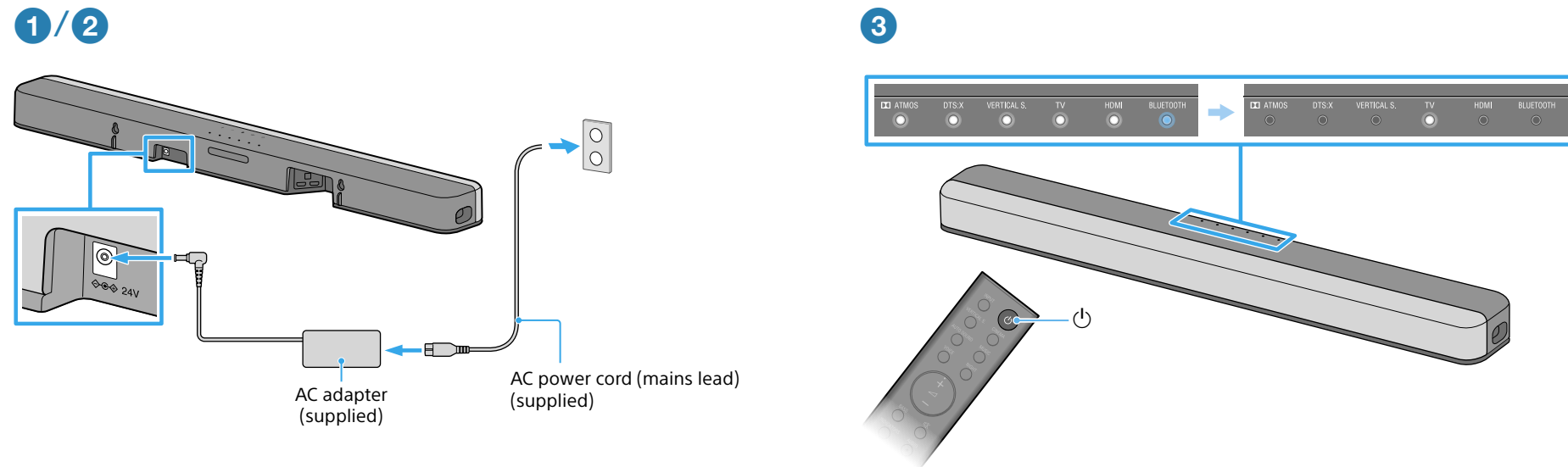
Continued on back page



5 Turning on the TV

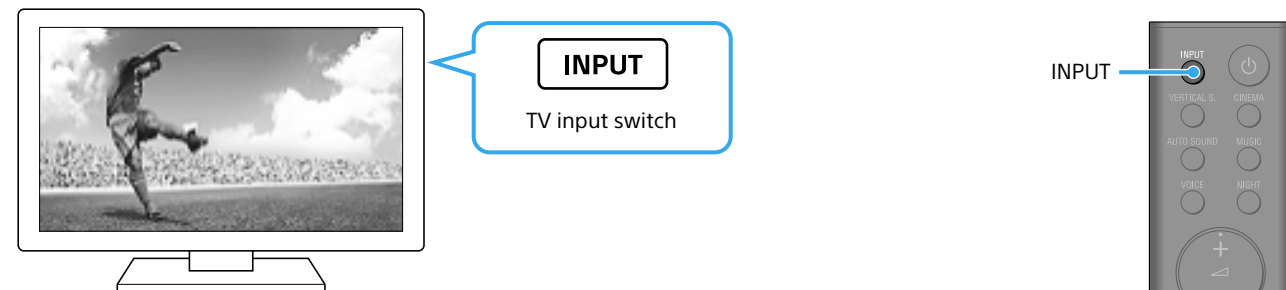


6 Turning on the Sound Bar



- 1 Connect the AC power cord (mains lead) (supplied) and the AC adapter (supplied), and then insert the plug of the AC adapter into the DC IN terminal of the Sound Bar until it clicks.
- 2 Connect the AC power cord (mains lead) to the AC outlet (mains).
The remote control of the Sound Bar does not work until all the indicators on the Sound Bar are turned off.
- 3 Press (power) on the remote control of the Sound Bar.
All of the indicators on the Sound Bar light up in sequence for a few seconds, and then only the TV indicator lights up.

7 Listening to audio



To listen to the audio of the TV

- 1 Select the desired input using the TV remote control.
The screen switches to the television broadcast screen and the TV audio is output from the Sound Bar.
If the TV indicator on the Sound Bar does not light up, press INPUT on the remote control of the Sound Bar to switch to the TV input. The TV indicator on the Sound Bar lights up.

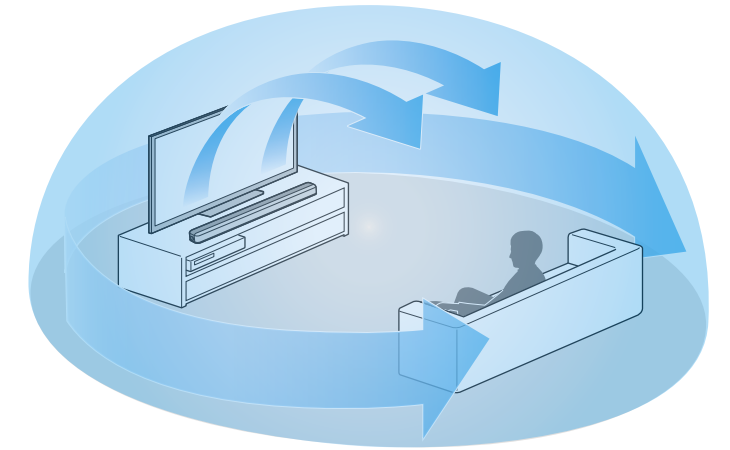
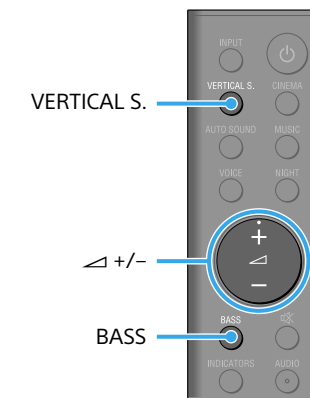
Note

- Depending on the order in which you turn on the TV and the Sound Bar, the Sound Bar may be muted and the Dolby ATMOS and BLUETOOTH indicators flash slowly. If this happens, turn on the TV first, and then the Sound Bar.

To listen to the audio of a device that is connected to the HDMI IN jack on the Sound Bar

- 1 Turn on the connected device. Then use the TV remote control to switch the TV's input to that for the HDMI IN jack to which the Sound Bar is connected.
- 2 Press INPUT on the remote control of the Sound Bar to switch to the HDMI input.
The HDMI indicator on the Sound Bar lights up and the audio of the connected device is output from the Sound Bar.

8 Enjoying immersive surround experience



- 1 Press VERTICAL S. on the remote control of the Sound Bar.
The VERTICAL S. indicator on the Sound Bar lights up.
Enjoy movies, music, and more with sound that flows all around the room, surrounding you from all directions.
- 2 Adjust the volume.
Adjust the volume of the Sound Bar by pressing +/- on the remote control of the Sound Bar.
Adjust the level of the bass tone by pressing BASS on the remote control of the Sound Bar.

Note

- The surround effect from all directions differs depending on the sound source.

Troubleshooting

No TV sound is output from the Sound Bar, or no picture is displayed on the TV.

- Press INPUT on the remote control of the Sound Bar to select the TV input. The TV indicator on the Sound Bar lights up.
- Make sure that the input and output of the HDMI jacks on the Sound Bar are correct.
- Disconnect the cables that connect the TV and the Sound Bar, and then reconnect them firmly. Disconnect the AC power cords (mains leads) of the TV and the Sound Bar from the AC outlets (mains), and then reconnect them.
- When the TV and the Sound Bar are connected with the HDMI cable (supplied), enable the Control for HDMI function or the eARC/ARC function on the TV. For details on the TV's settings, refer to the operating instructions supplied with the TV. For more information about the Control for HDMI function, refer to the Operating Instructions (separate document).
- Check the sound setting of the TV. When the TV is set to output the sound from the TV speakers, change the setting to output the sound from the external speakers.

No picture or sound from the device connected to the Sound Bar is output.

- Press INPUT on the remote control of the Sound Bar to select the desired input. The indicator on the Sound Bar that corresponds with the selected input lights up.
- Make sure that the input and output of the HDMI jacks on the Sound Bar are correct.
- Disconnect the cables connected to the Sound Bar, and then connect them again. Make sure that the cables are firmly inserted.

The TV remote control does not work.

- When the Sound Bar obstructs the remote control sensor of the TV, the TV remote control may not work. In that case, press and hold STANDARD on the remote control of the Sound Bar for 5 seconds to set the IR repeater function to on. You can control the TV with the TV remote control. For details, refer to "When the TV Remote Control does not Work" in the Operating Instructions (separate document).

No sound or only a very low-level sound is heard from the subwoofer.

- Press BASS on the remote control of the Sound Bar to adjust the level of the bass tone, which changes cyclically as 0 → +1 → -1 → 0...
- The subwoofer is designed for playback of bass or low frequency sounds. When the input source does not contain much bass sound, such as in TV programs, the bass sound from the subwoofer may be difficult to hear.

If the problem is not solved even though you have tried the measures above, refer to "Troubleshooting" in the Operating Instructions (separate document).