

Dryer Quick Start Guide

OPERATING INSTRUCTIONS

⚠ WARNING



Fire Hazard

No washer can completely remove oil.
Do not dry anything that has ever had any type of oil on it (including cooking oils).
Items containing foam, rubber, or plastic must be dried on a clothesline or by using an Air Cycle.
Failure to follow these instructions can result in death or fire.

⚠ WARNING



Explosion Hazard

Keep flammable materials and vapors, such as gasoline, away from dryer.
Do not dry anything that has ever had anything flammable on it (even after washing).
Failure to follow these instructions can result in death, explosion, or fire.

WARNING: To reduce the risk of fire, electric shock, or injury to persons, read the IMPORTANT SAFETY INSTRUCTIONS, located in your appliance's Owner's Manual, before operating this appliance.

Button Descriptions

1. POWER/CANCEL

Touch to turn the dryer on and off. Touch to stop/cancel a cycle at any time.

2. CYCLE CONTROL KNOB

Use the Cycle Control knob to select available cycles on your dryer. Turn the knob to select a cycle for your laundry load. See the online "Cycle Guide" for details.

The Cycle Control Knob can also be pressed to activate the Extra Power option for harder-to-dry loads. See the "Options" section for more information.

3. START/PAUSE

Touch and hold until LED counts down "3-2-1" and the dryer starts; or touch once while a cycle is in process to pause it.

4. LED DISPLAY AND SETTINGS

When you select a cycle, its settings will light up and the estimated time remaining (for Sensor Cycles) or actual time remaining (for Timed Cycles) will be displayed.

See online "Cycle Guide" for details.

Not all settings are available with all cycles.

More Time/Less Time

Touch More Time or Less Time with Timed Cycles to increase or decrease the length of a Timed Dry or Quick Dry cycle.

Temp

When using any cycle except Sanitize, you may select a dry temperature based on the type of load you are drying. Use the warmest setting acceptable for the garments in the load. Follow garment label instructions.

Dryness

When using Sensor Cycles, you may select a Dryness level based on the type of load you are drying (except for the Sanitize cycle).

CYCLE STATUS

The Cycle Status indicators show the progress of a cycle. Touch a button for the desired drying cycle. Not all indicators are available on all models. See the online "Cycle Guide" for cycle details.

Sensing

The Sensing indicator will light during Sensor Cycles to indicate that the moisture sensor on the dryer is operating. This indicator will not light during Timed Cycles or options such as Wrinkle Prevent.

Wet

The load is still wet and/or the cycle just started.

Damp

The load still has moisture remaining, a good point in the cycle to remove a garment to air dry or iron.

Cool Down

The dryer has finished drying with heat and is now tumbling the load without heat to cool it down and reduce wrinkling.

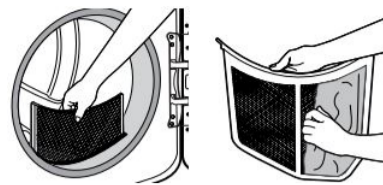
End

This will indicate that the selected cycle has ended and the load may be removed from the dryer. If Wrinkle Prevent has been selected, the dryer may continue to tumble the load, even if "End" is displayed.

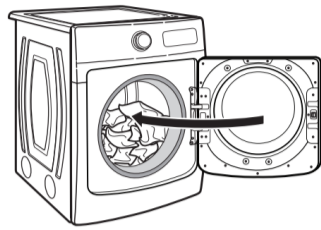
Check Vent

The Check Vent indicator is a feature available for Sensor Cycles only. This indicator will show the status of airflow through the dryer and the dryer vent system for the dryer's life. During the sensing phase at the beginning of the cycle, the Check Vent light will come on if a blocked vent or low airflow issue is detected. This light will stay on for the entire cycle. Should the Check Vent light illuminate, refer to the online "Troubleshooting" section for potential solutions to the issue. The light will be cleared upon completion of the cycle, touching Power, or opening the door. It will continue to illuminate during the cycle unless the root cause is resolved.

Step 1. Clean Lint Screen



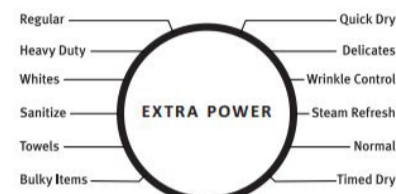
Step 2. Load Clothes



Step 3. Turn Power On



Step 4. Close Door; then Select Cycle and Settings



Step 5. Press START/PAUSE



NOTE: The dryer will continue to operate even while the indicator is lit, but poor airflow can impact dry times and overall performance. If there are other error issues during a cycle, the Check Vent indicator will not light up. Refer to the online "Troubleshooting" section.

Control Lock

The key icon will illuminate when controls are locked.

NOTE: The Control Lock function may be enabled when recovering from a power failure. To unlock the control, touch and hold Control Lock for at least 3 seconds.

5. OPTIONS

Use to select available options for your dryer. Not all cycles and options are available on all models.

Wrinkle Prevent

If you will be unable to remove a load immediately, touch Wrinkle Prevent to add up to 150 minutes of periodic tumbling to help reduce wrinkling. On steam models, on some cycles, you may select the "+Steam" setting to add a short steam cycle after 60 minutes to help smooth out wrinkles.

Reduce Static (on some models)

Touch to add this option to selected Sensor Cycles. The dryer will automatically tumble, pause, and introduce a small amount of moisture into the load to help reduce static. This option adds approximately 3 minutes to the total cycle time.

Steam (steam models only)

Steam adds steam to the end of certain Sensor Cycles to help smooth wrinkles. It is not available on Sanitize, Delicates, Steam Refresh, or Timed Cycles (Timed Dry, Quick Dry). Steam can be used with High or Medium heat settings. This option adds approximately 15 minutes to the total cycle time.

Cycle Guide - Normal Cycle

If settings are changed, the new settings will be remembered. If there is a power failure, settings will return to the default. Not all features and cycles are available on all models. Not all settings and options are available on each cycle.

Use Sensor Cycle for better fabric care and energy savings.

The dryer senses moisture in the load or air temperature and shuts off when the load reaches the selected dryness level. The exact cycle times will vary, depending on the load size and type. Options shown in bold are default settings for that cycle.

Items to Dry:	Cycle:	"How to Dry":	Description:
Work clothes, casual wear, mixed cottons, sheets, corduroys	Normal	Medium	Uses Medium heat to dry large loads of mixed fabrics and items. Normal is the most efficient cycle.

NOTE: Government energy certifications for this model were based on the Regular + Normal Cycle, Highest temperature setting, Normal Dryness Level, EcoBoost™ On. The as-shipped defaults were the same as the Government Energy Certification Settings except the default Temperature Setting of Medium was adjusted to the Highest temperature setting. Cycles that are available for post-sale download may use more energy than the Normal cycle, upon which the energy use rating of this dryer is based upon.

For detailed installation instruction and maintenance information, winter storage, and transportation tips, please see the Owner's Manual included with your machine.

Online Ordering Information

For information on any of the following items, the full cycle guide, detailed product dimensions, or for complete instructions for use and installation, please visit <https://www.maytag.com/owners>, or in Canada <https://www.maytag.ca/owners>. This may save you the cost of a service call.

Register Product	Manuals & Downloads	Troubleshooting & FAQ	Replacement Parts
Add Service Plan	Schedule Service	Filters	Rebate & Promos

However, if you need to contact us, use the information listed below for the appropriate region.

United States:
1-800-344-1274
 Maytag Brand Appliances
 Customer eXperience Center
 553 Benson Road
 Benton Harbor, MI 49022-2692

Canada:
1-800-688-2002
 Maytag Brand Appliances
 Customer eXperience Centre
 200-6750 Century Ave.
 Mississauga, Ontario L5N 0B7

Cycle Signal

Use this to turn the signal indicating the end of a drying cycle on or off. Touch Cycle Signal to turn sounds on or off.

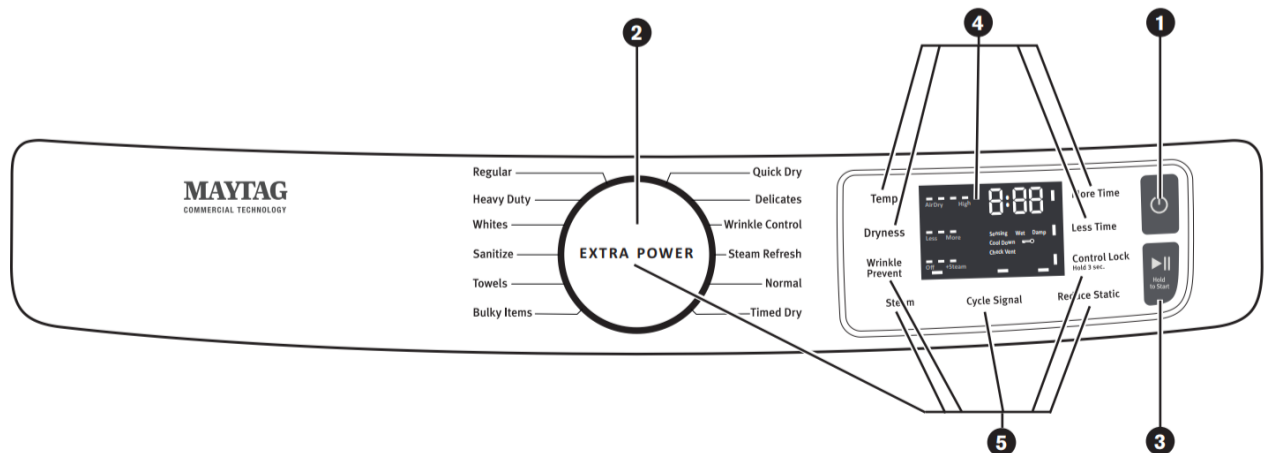
Control Lock

Use to lock the controls of the dryer and avoid an unintended change in cycle options or preferences during a drying cycle. Touch and hold Control Lock for 3 seconds to lock or unlock the controls of the dryer. During this time, the LED display will count down "3-2-1." Once the controls are locked, the Control Lock icon will illuminate.

NOTE: The Control Lock function may be enabled when recovering from a power failure. To unlock the control, touch and hold Control Lock for at least 3 seconds.

Extra Power

The Extra Power option can be used with both Sensor and Timed Dry Cycles. Press the Cycle Control knob to activate the Extra Power option, which provides an additional 10 minutes of cycle time (including additional heat and tumbling, where applicable). When Extra Power is activated, the Cycle Control knob will illuminate and the estimated time remaining on the display will show an additional 10 minutes.



Not all features, cycles, and options are available on all models. Appearance may vary.

NOTE: The control panel features a sensitive surface that responds to a light touch of your finger. To ensure your selections are registered, touch the control panel with your finger tip, not your fingernail. When selecting a setting or option, simply touch its name.

