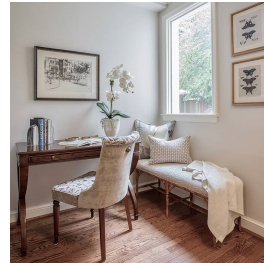


Bedside Writing Table

SKU 2030-10



Description

A rectangular top rests over an apron rail drawer flanked by curvaceous intersecting legs.

Specification

Width	42"
Depth	21"
Height	30"
Material	Alder solids, cherry and mappa burl veneer
Floor to Bottom of Apron	25.125" H

Finishes

10 Bordeaux Finish

Brass

Notes