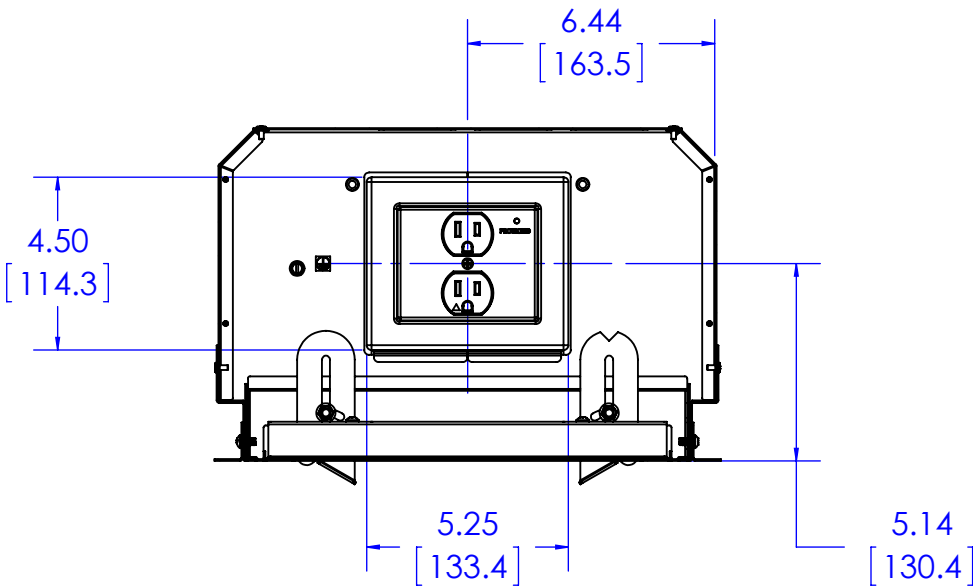
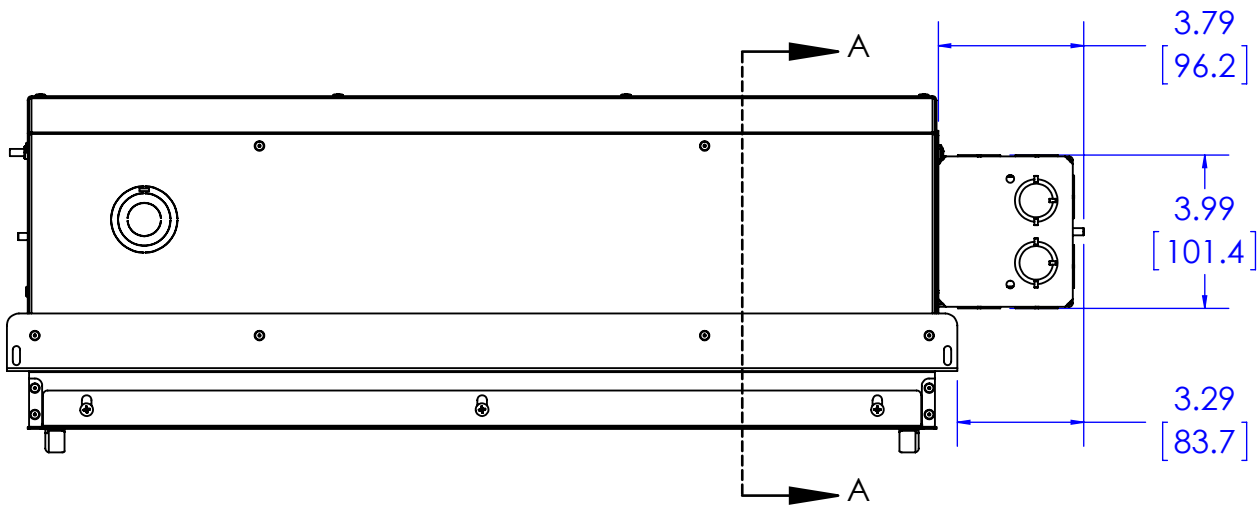
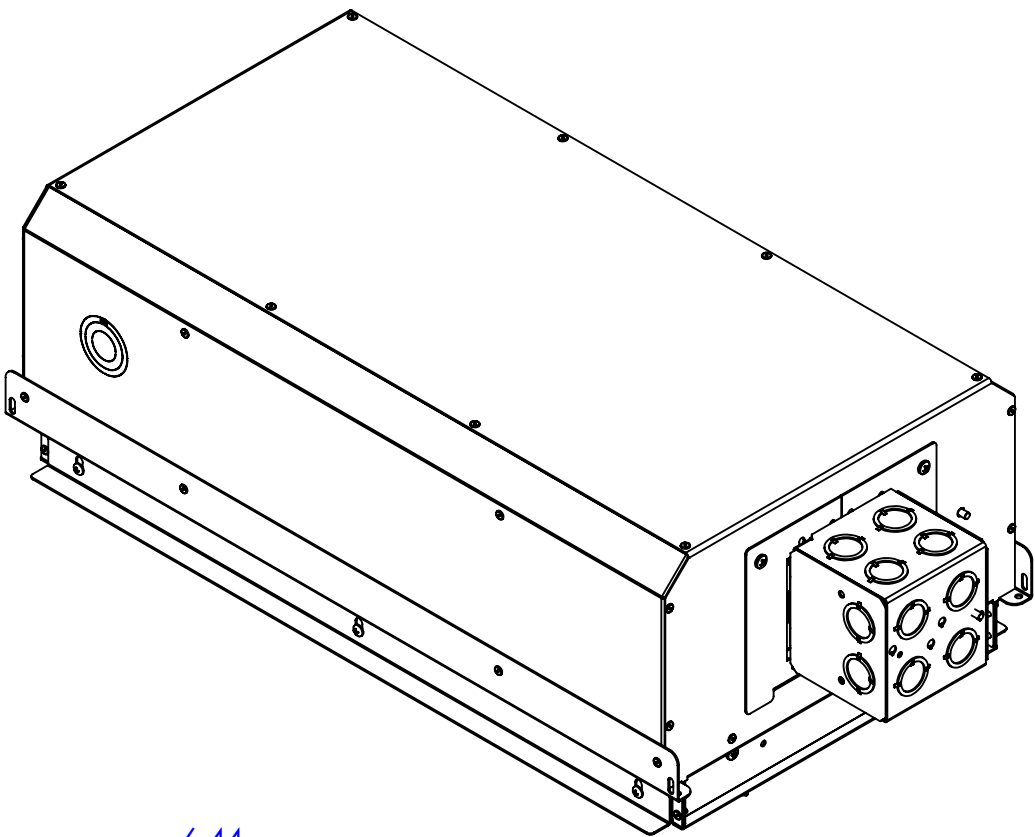
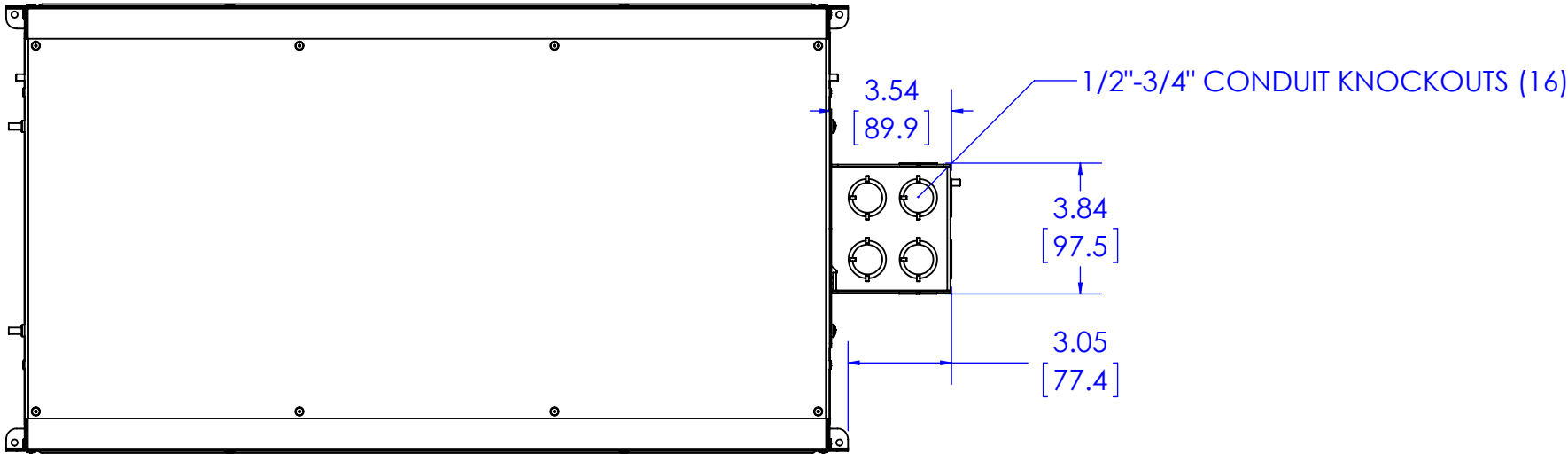



\*SEE CMS491 FOR BOX DIMENSIONS\*



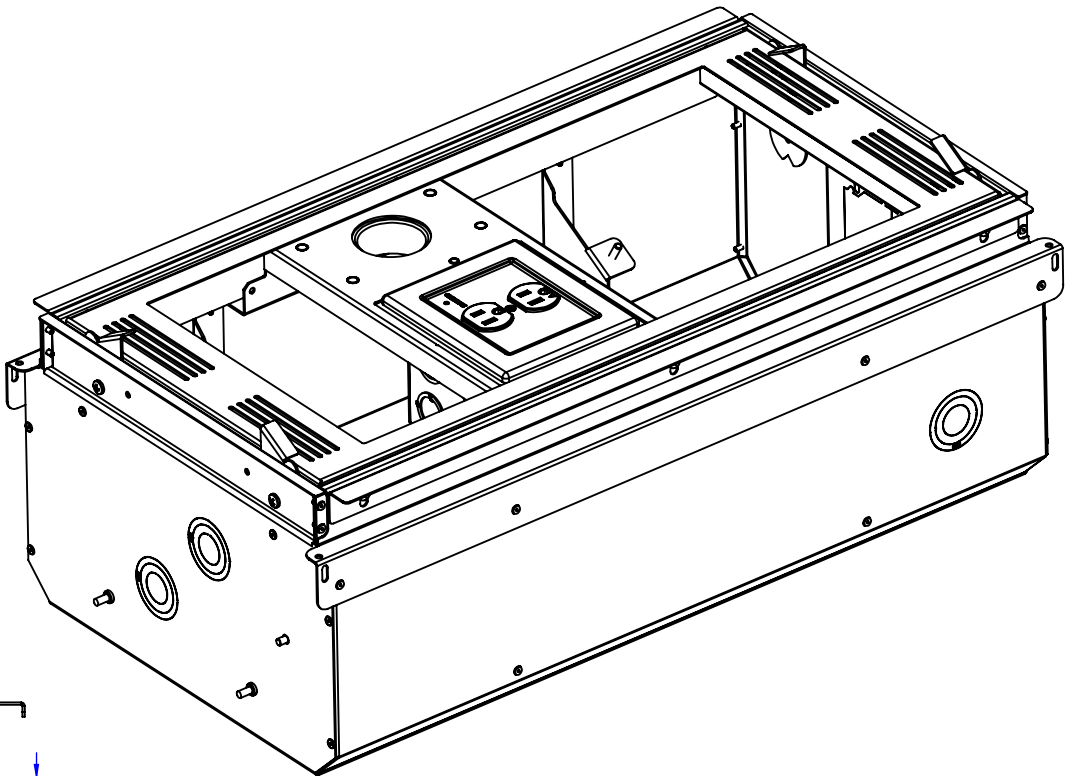
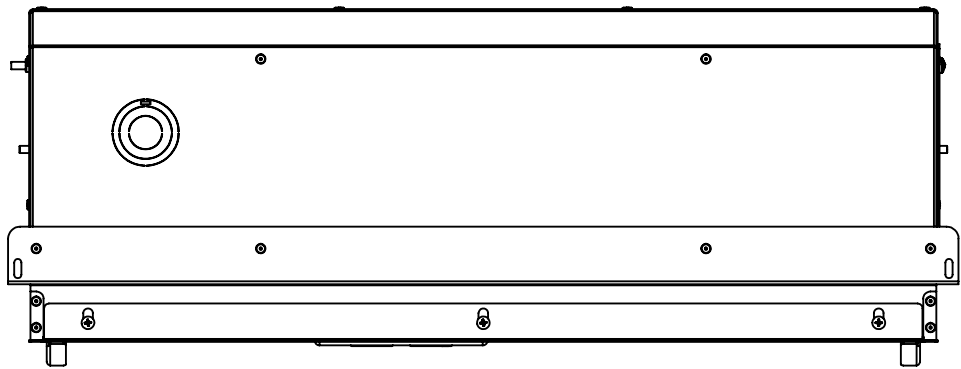
SECTION A-A

AC LINE POWER CONDITIONER 125 V~, 60 Hz, 15 A  
4x14 AWG STRANDED WIRE W/ ISOLATED GROUND  
SURGE PROTECTION  
EMI/RFI FILTERING  
POWER CONSUMPTION: <0.5 WATT

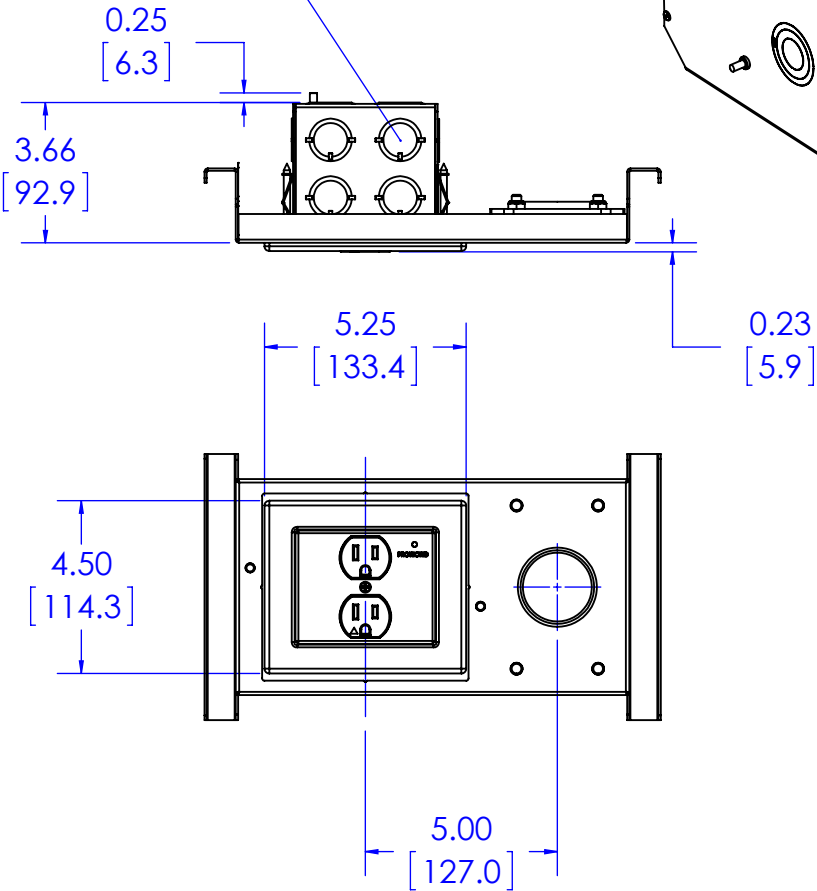
THE INFORMATION AND DESIGNS CONTAINED IN THIS DRAWING ARE CONFIDENTIAL AND THE PROPRIETARY PROPERTY OF MILESTONE AV TECHNOLOGIES NEITHER THIS DESIGN NOR ANY INFORMATION CONTAINED IN THIS DRAWING MAY BE REPRODUCED OR DISCLOSED TO OTHERS WITHOUT THE EXPRESS WRITTEN CONSENT OF MILESTONE AV TECHNOLOGIES.

CAD GENERATED DRAWING, DO NOT MANUALLY UPDATE.			 6436 CITY WEST PKWY EDEN PRAIRIE MN, 55344 PHONE: 866-977-3901 FAX: 877-894-6918	
DRAWN BY	MM	8/18/2015		
ENG APPROVAL			DESCRIPTION <b>1X2 POWERED CEILING STORAGE BOX</b>	
MFG APPROVAL				
QA APPROVAL			MODEL NO. <b>CMS491P2 / CMS491CP2</b>	
SHEET 1 OF 2		SCALE <b>1:5</b>	SIZE <b>B</b>	DWG. NO. <b>TECH-000722</b>
				REV. <b>01</b>

\*SEE CMS491C FOR BOX DIMENSIONS\*




1/2"-3/4" CONDUIT KNOCKOUTS (16)



AC LINE POWER CONDITIONER 125 V~, 60 Hz, 15 A  
4x14 AWG STRANDED WIRE W/ ISOLATED GROUND  
SURGE PROTECTION  
EMI/RFI FILTERING  
POWER CONSUMPTION: <0.5 WATT

THE INFORMATION AND DESIGNS CONTAINED IN THIS DRAWING ARE CONFIDENTIAL AND THE PROPRIETARY PROPERTY OF MILESTONE AV TECHNOLOGIES NEITHER THIS DESIGN NOR ANY INFORMATION CONTAINED IN THIS DRAWING MAY BE REPRODUCED OR DISCLOSED TO OTHERS WITHOUT THE EXPRESS WRITTEN CONSENT OF MILESTONE AV TECHNOLOGIES.

CAD GENERATED DRAWING, DO NOT MANUALLY UPDATE.			 <div>6436 CITY WEST PKWY EDEN PRAIRIE MN, 55344 PHONE: 866-977-3901 FAX: 877-894-6918</div>	
DRAWN BY	MM	8/18/2015		
ENG APPROVAL			DESCRIPTION <b>1X2 POWERED CEILING STORAGE BOX</b>	
MFG APPROVAL				
QA APPROVAL			MODEL NO. <b>CMS491P2 / CMS491CP2</b>	
SHEET 2 OF 2		SCALE <b>1:5</b>	SIZE <b>B</b>	DWG. NO. <b>TECH-000722</b>
				REV. <b>01</b>