

# caracole



## MODERNE SOFA

m020-417-012-a

**COLLECTION:** MODERN STREAMLINE

**DIMENSIONS:** 88.75W x 38.5D x 29H

This sofa with squared corners is impeccably tailored. Fully encased in soft brushed neutral linen-look fabric, the back and arms have a vertical stitch detail and a slender blanket wrap feature that envelopes the tapered track arm design. The bench seat adds to its streamlined appeal. Three matching throw pillows are paired with two velvet pillows in rich espresso and two contrasting pillows showcasing an enlarged herringbone pattern in a lighter espresso shade. Perched on low platform feet finished in Bourbon Glaze, this is a bespoke piece for contemporary living.

**CONSTRUCTION:** Blendown supreme cushion. | No sag seat. | Feather down pillows.

### FINISH:



Bourbon\_Glaze

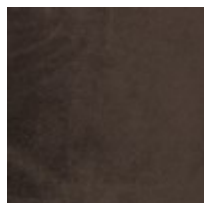
### FABRIC:



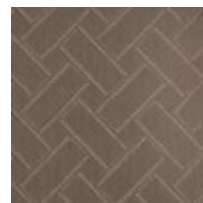
Body Fabric: 2447-34CC



Pillow Fabric: 2-22" x 22" and 1-21" x 21"



2-21" x 21" Pillows  
2533-78CC



2-18" x 18" Pillows  
8231-78CC

Pillow 2447-34CC