

SAMSUNG

Repair Guide

Basic Model

UN65M70HAFXZA

Applicable Model

UN**M70H*****

Ver.1.0

Self-Repair Legal Disclosures

Usage Notices

All content and information provided in this document, are subject to change without notice at any time. This document is intended for informational purposes only. You can download a copy of your product [Manuals and Software](#). If you don't understand the information provided in this document or have any doubts about your ability to safely undertake the repair, visit <https://www.samsung.com/us/support> or call 1-800-Samsung for other repair options.

Precautions for Repair

Samsung is not liable for any damage or defect determined to be caused by repair by a non-authorized service provider, self-repair or non-professional repair of the product. Samsung is not liable for any resulting damage to the product, person, or property, or any injury or other product safety issue caused by any attempt to repair the product by any person other than a Samsung- authorized service provider. Any damage or defect to product resulting from a repair, or an attempt to repair, the product by any person other than a Samsung certified service provider will not be covered by the warranty.

Visit [Samsung.com](https://www.samsung.com) to view the product information, repair guides, related material, and safety information.

- Ensure that you have read and understood the repair guide and related safety information before attempting a repair and that you reference the guide ensuring that:
 - o The repair is conducted in a safe and clean area.
 - o Backup copies of all important data stored in the device are made.
 - o The product is turned off and unplugged from the power source
 - o ESD precautions are taken where required.
 - o The recommended tools and personal protective equipment are used.
 - o The repair is made using Samsung genuine parts.
 - o Where required, the recommended post repair testing and calibration is conducted.
 - o Used parts are appropriately handled and disposed of.

Terms of Use:

General Terms: This manual contains confidential and proprietary information of Samsung Electronics Co., Ltd. ("Samsung"). All text, graphics, user interfaces, visual interfaces, photographs, trademarks, and logos (collectively, "Content"), including but not limited to the design, structure, selection, coordination, "look and feel" and arrangement of such Content, contained in this manual is owned, controlled or licensed by or to Samsung, and is protected by trade dress, copyright, patent and trademark laws, and various other intellectual property rights and unfair competition laws.

No part of this manual or the Content may be copied, reproduced, republished, uploaded, posted, publicly displayed, encoded, translated, transmitted or distributed in any way (including "mirroring") to anyone, any entity, any other computer, server, Web site or other medium for publication or distribution or for any commercial purpose, without Samsung's express prior written consent.

Limitation of Liability. WHILE SAMSUNG MAKES ALL REASONABLE EFFORTS TO INSURE THAT ALL INFORMATION IN THIS MANUAL IS CORRECT, SAMSUNG DOES NOT ASSUME ANY RESPONSIBILITY FOR THE ACCURACY OR COMPLETENESS OF ANY INFORMATION CONTAINED IN THIS MANUAL. SAMSUNG PROVIDES INFORMATION AND MATERIALS CONTAINED IN THIS MANUAL TO YOU ON AN "AS IS" BASIS WITHOUT WARRANTY OF ANY KIND, EITHER EXPRESS OR IMPLIED. SAMSUNG SPECIFICALLY DISCLAIMS ANY LIABILITY FOR ANY DIRECT, INDIRECT, INCIDENTAL, CONSEQUENTIAL OR SPECIAL DAMAGES ARISING OUT OF OR IN ANY WAY CONNECTED WITH YOUR ACCESS TO OR USE OF THE INFORMATION IN THIS MANUAL, INCLUDING BUT NOT LIMITED TO ANY LOSS OR DAMAGE CAUSED BY YOUR RELIANCE ON INFORMATION OBTAINED THROUGH THIS MANUAL. Some jurisdictions do not allow exclusion of certain warranties or limitations of liability, so the above limitations or exclusions may not apply to you. Samsung's liability in any case shall be limited to the greatest extent permitted by law.

Samsung reserves the right, at its sole discretion, to change, modify, add or remove portions of any part of this manual at any time. It is your responsibility to check the manual periodically for changes. Your use of the manual will mean that you accept and agree to these Terms of Use, including the Limitation of Liability and the Dispute Resolution Agreement terms set out at <https://www.samsung.com/us/support/legal/mobile/#dispute-resolution-agreement>. If you do not agree to comply with these Terms of use, in whole or in part, please stop using this manual immediately.

Contents

1. Precautions

1-1. Safety Precautions	1-1
1-1-1. Warnings	1-1
1-1-2. Servicing the LED TV	1-1
1-1-3. Fire and Shock Hazard.....	1-1
1-1-4. Product Safety Notices	1-2
1-2. Servicing Precautions.....	1-3
1-2-1. General Servicing Precautions	1-3
1-3. Static Electricity Precautions.....	1-4
1-4. Installation Precautions.....	1-5

2. Disassembly and Reassemble

2-1. TV Disassembly	2-1
---------------------------	-----

3. Troubleshooting

3-1. Basic Troubleshooting.....	3-1
3-2. After Replacing Main Board.....	3-2

SAMSUNG PROPRIETARY. DO NOT COPY OR DISTRIBUTE WITHOUT PERMISSION

1. Precautions

1-1. Safety Precautions

- Follow these safety, servicing and ESD precautions to prevent damage and to protect against potential hazards such as electrical shock.

1-1-1. Warnings



WARNING

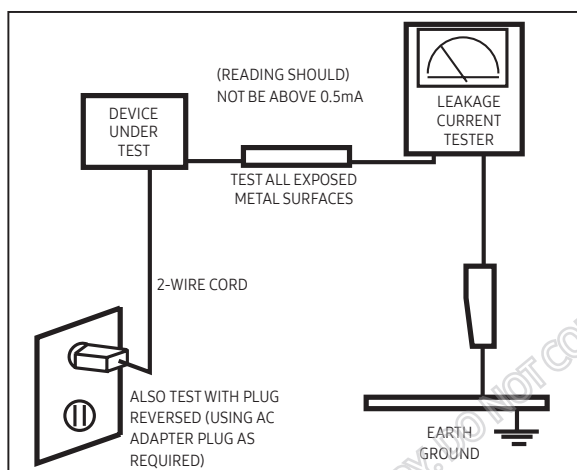
For continued safety, do not attempt to modify the circuit board.
Disconnect the AC power and DC power jack before servicing.
Discharge residual voltage before removing or handling the printed circuit board assembly(PCBA).

1-1-2. Servicing the LED TV

- When servicing the LED TV, Disconnect the AC line cord from the AC outlet.
- It is essential that service technicians have an accurate voltage meter available at all times. Check the calibration of this meter periodically.

1-1-3. Fire and Shock Hazard

- After completion of repair, perform the following safety checks:
 - Inspect each lead dress to make certain that the leads are not pinched or that hardware is not lodged between the chassis and other metal parts in the monitor.
 - Inspect all protective devices such as nonmetallic control knobs, insulating materials, cabinet backs, adjustment and compartment covers or shields, isolation resistor/capacitor networks, mechanical insulators, etc.
 - Leakage Current Hot Check:




WARNING

Do not use an isolation transformer during this test.
Use a leakage current tester or a metering system that complies with American National Standards Institute (ANSI C101.1, Leakage Current for Appliances), and Underwriters Laboratories (UL Publication UL1410, 59.7).

- With the unit completely reassembled, plug the AC line cord directly into a 120V AC outlet. With the unit's AC switch first in the ON position and then OFF, measure the current between a known earth ground (metal water pipe, conduit, etc.) and all exposed metal parts, including: metal cabinets, screwheads and control shafts.
The current measured should not exceed 0.5 milliamp.
Reverse the power-plug prongs in the AC outlet and repeat the test.

Precautions

1-1-4. Product Safety Notices

Some electrical and mechanical parts have special safety-related characteristics which are often not evident from visual inspection. The protection they give may not be obtained by replacing them with components rated for higher voltage, wattage, etc. Parts that have special safety characteristics are identified by  on Disassembly and Reassembly. A substitute replacement that does not have the same safety characteristics as the recommended replacement part might create shock, fire and/or other hazards. Product safety is under review continuously and new instructions are issued whenever appropriate.



WARNING

Wear protective equipment (gloves, safety goggles, etc) all time and discharge residual voltage from printed circuit board assembly (PCBA) before removing or handling to prevent injuries and electrical shock that may occur during product disassembly/repair.

SAMSUNG PROPRIETARY. DO NOT COPY OR DISTRIBUTE WITHOUT PERMISSION

1-2. Servicing Precautions



An electrolytic capacitor installed with the wrong polarity might explode.



Before servicing units covered by this service manual, read and follow the Safety Precautions section of this manual.



If unforeseen circumstances create conflict between the following servicing precautions and any of the safety precautions, always follow the safety precautions.



Following the repair by a non-authorized service provider, self-repair or non-professional repair of the product, Samsung is not liable for any damage to the product, any injury or any other product safety issue caused by any attempt to repair the product which does not carefully follow these repair and maintenance instructions. Any damage to the product caused by an attempt to repair the product by any person other than a Samsung certified service provider will not be covered by the warranty

1-2-1. General Servicing Precautions

1. Always unplug the unit's AC power cord from the AC power source and disconnect the DC Power Jack before attempting to:
(a) remove or reinstall any component or assembly, (b) disconnect PCB plugs or connectors, (c) connect a test component in parallel with an electrolytic capacitor.
2. Some components are raised above the printed circuit board for safety. An insulation tube or tape is sometimes used. The internal wiring is sometimes clamped to prevent contact with thermally hot components. Reinstall all such elements to their original position.
3. After servicing, always check that the screws, components and wiring have been correctly reinstalled. Make sure that the area around the serviced part has not been damaged.
4. Check the insulation between the blades of the AC plug and accessible conductive parts (examples: metal panels, input terminals and earphone jacks).
5. Insulation Checking Procedure: Disconnect the power cord from the AC source and turn the power switch ON. Connect an insulation resistance meter (500 V) to the blades of the AC plug. The insulation resistance between each blade of the AC plug and accessible conductive parts (see above) should be greater than 1 megohm.
6. Always connect a test instrument's ground lead to the instrument chassis ground before connecting the positive lead; always remove the instrument's ground lead last.

1-3. Static Electricity Precautions

Some semiconductor (solid state) devices can be easily damaged by static electricity. Such components are commonly called Electrostatically Sensitive Devices (ESD). Examples of typical ESD are integrated circuits and some field-effect transistors. The following techniques will reduce the incidence of component damage caused by static electricity.

1. Immediately before handling any semiconductor components or assemblies, drain the electrostatic charge from your body by touching a known earth ground. Alternatively, wear a discharging wrist-strap device. To avoid a shock hazard, be sure to remove the wrist strap before applying power to the monitor.
2. After removing an ESD-equipped assembly, place it on a conductive surface such as aluminum foil to prevent accumulation of an electrostatic charge.
3. Do not use freon-propelled chemicals. These can generate electrical charges sufficient to damage ESDs.
4. Use only a grounded-tip soldering iron to solder or desolder ESDs.
5. Use only an anti-static solder removal device. Some solder removal devices not classified as "anti-static" can generate electrical charges sufficient to damage ESDs.
6. Do not remove a replacement ESD from its protective package until you are ready to install it. Most replacement ESDs are packaged with leads that are electrically shorted together by conductive foam, aluminum foil or other conductive materials.
7. Immediately before removing the protective material from the leads of a replacement ESD, touch the protective material to the chassis or circuit assembly into which the device will be installed.



Be sure no power is applied to the chassis or circuit and observe all other safety precautions.

8. Minimize body motions when handling unpackaged replacement ESDs. Motions such as brushing clothes together, or lifting your foot from a carpeted floor can generate enough static electricity to damage an ESD.

1-4. Installation Precautions

1. For safety reasons, more than a people are required for carrying the product.
2. Keep the power cord away from any heat emitting devices, as a melted covering may cause fire or electric shock.
3. Do not place the product in areas with poor ventilation such as a bookshelf or closet. The increased internal temperature may cause fire.
4. Bend the external antenna cable when connecting it to the product. This is a measure to protect it from being exposed to moisture. Otherwise, it may cause a fire or electric shock.
5. Make sure to turn the power off and unplug the power cord from the outlet before repositioning the product. Also check the antenna cable or the external connectors if they are fully unplugged. Damage to the cord may cause fire or electric shock.
6. Keep the antenna far away from any high-voltage cables and install it firmly. Contact with the highvoltage cable or the antenna falling over may cause fire or electric shock.
7. When installing the product, leave enough space (40mm) between the product and the wall for ventilation purposes. A rise in temperature within the product may cause fire.
8. If an equipment is provided with a replaceable battery, and if replacement by an incorrect type could result in an explosion (for example, with some lithium batteries), the following applies:



- Risk of explosion if battery is replaced by an incorrect type dispose of used batteries according to the instructions.
- Do not dispose of batteries in a fire.
- Do not short circuit, disassemble or overheat the batteries.
- Danger of explosion if battery is incorrectly replaced. Replace only with the same or equivalent type.
- Do not be exposed to excessive heat such as sunshine, fire or the like.

2. Disassembly and Reassemble

This section of the service manual describes the disassembly and reassembly procedures for the LED TV.



1. Disconnect the LED Screen from the power source before disassembly.
 - ※ More than two people are required to handle 60-inch or larger TV sets.
 - ※ Be careful not to damage the COF part at the bottom of the panel during disassembly/assembly/handling.
2. Follow these directions carefully.
 - 2-1 Use the Samsung Service tool to disassemble the cabinet
 - ※ Recommend to use the Samsung Service tool
 - 2-2 Recommended Torque for Cabinet/Stand screws : 10 ~ 12kgf
 - ※ A strength of Torque can be changed depending on the situation.

- For information about purchasing parts and jigs, please visit <https://www.samsung.com/us/support/self-repair/>

		
Samsung IR Remote (BN59-01301A)	Assembly Misc P-jig-2017 (BN81-14946B)	Service Jig-Capacitor Discharge (BN81-16292A)

2-1. TV Disassembly



- ※ Be careful not to damage the COF part at the bottom of the panel during disassembly/assembly/handling.

- ※ When you open or close the cover rear, please be careful to ensure that cable does not get caught on the cover rear hook.

Disassembly and Reassemble

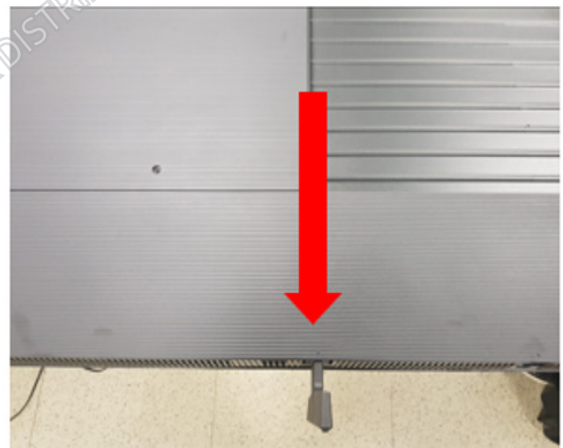
1

- Remove power cord and connections and place the TV down onto a protected surface.



2

- Remove the stands with pulling down.



3

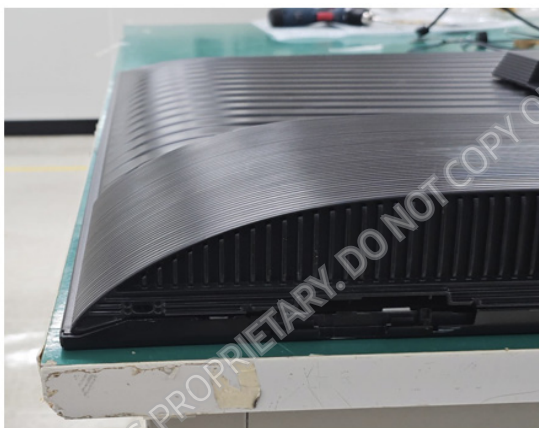
After placing the SET on the edge of the table, put the JIG in the side disassembly JIG hole at the top of the COVER-REAR to lift the COVER-REAR.



Location of JIG Hole



SAMSUNG PROPRIETARY. DO NOT COPY OR DISTRIBUTE WITHOUT PERMISSION



Set on the corner of table



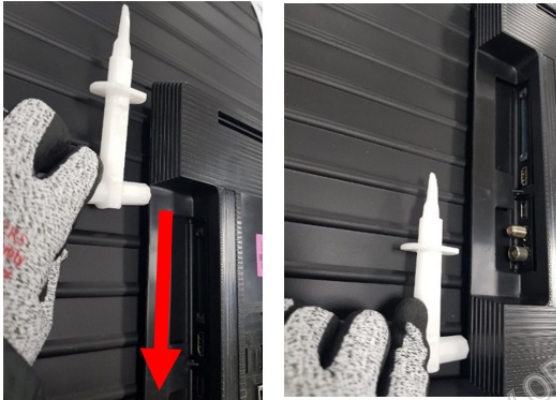
Location of Top JIG Hole

SAMSUNG PROPRIETARY. DO NOT COPY OR DISTRIBUTE WITHOUT PERMISSION

Disassembly and Reassemble

4

- Put JIG into the open gap and lift COVER-REAR while moving downward to disassemble the hook.



Location of Top Hook

5

- In the decomposition JIG hole, JIG is placed from bottom to top to lift COVER-REAR.



Location of JIG Hole



Direction of Jig input



Location of Bottom JIG Hole

6

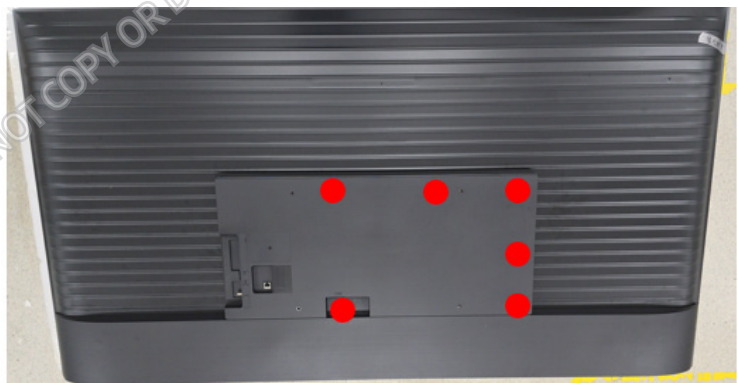
- Put the JIG into the open gap and lift the COVER-REAR while moving upward to disassemble the lower hook.



Location of Bottom Hook

7

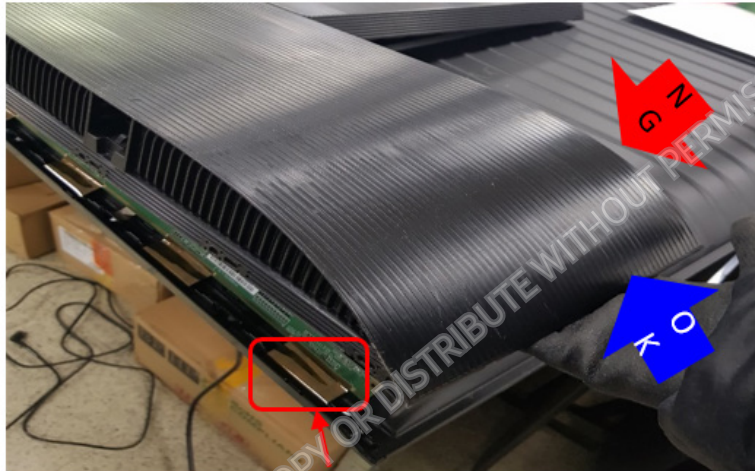
- Put your hand inside the COVER-REAR to disassemble the inner hook.



Location of inner Hook

8

- Disassemble the COVER-REAR by lifting the lower left and right ends.

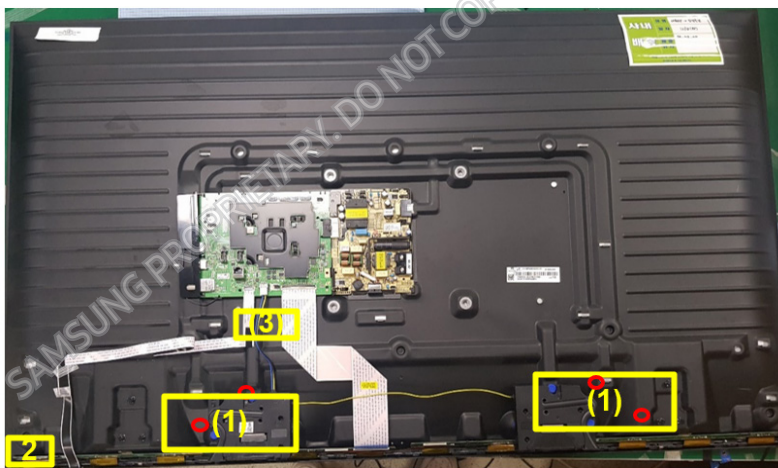


※ Caution: If the position of the hand is located at the top of the COVER-REAR lift, COVER-REAR distortion occurs and there is a risk of COF damage.



9

- Remove the Speaker(1), BT/WIFI/IR function(2) and cables(3).



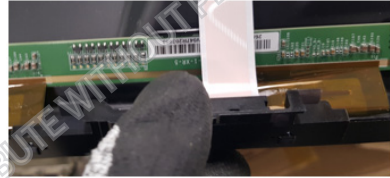
(3) cable connectors

9-1

- Grab the middle of the module and pull it.(Check the locking Points)
After that, remove the cable with pull up black locking point.

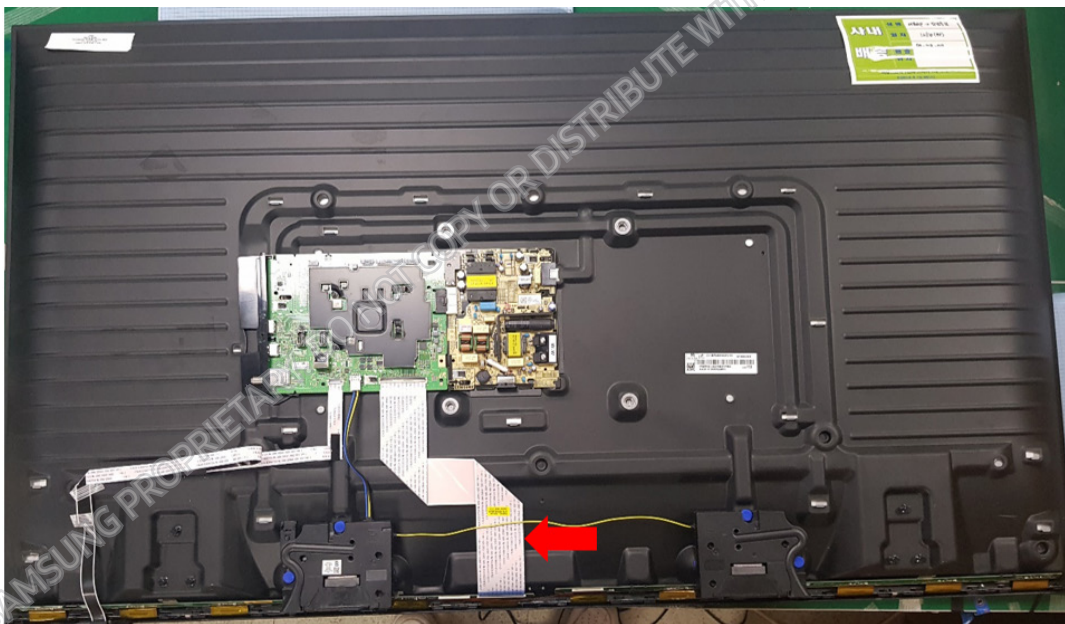


Locking Points(no screws)



9-2

- Remove USIT cable(s).



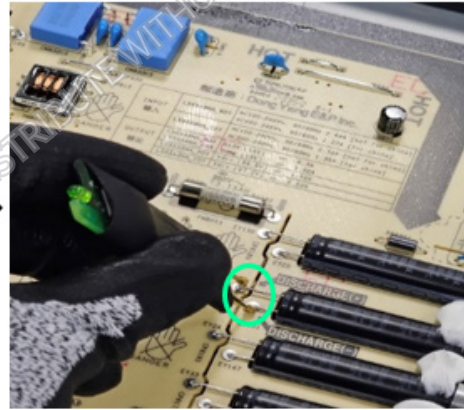
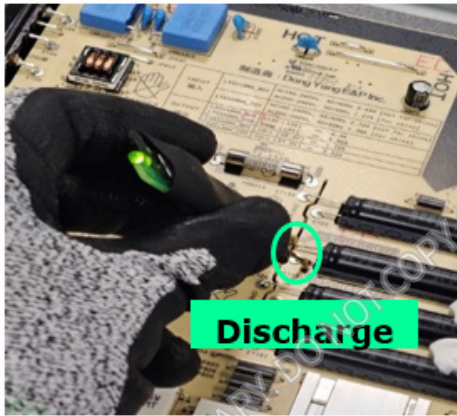
Disassembly and Reassemble

10-1

- Remove MAIN-SMPS(3in1) board.
Before Removing SMPS board,
- You have to discharge the SMPS by using service JIG across leads of Large Capacitors as pictured below.
- If LED ON -> LED OFF, Discharge is completed. Then verify voltage is less than 10Vdc across leads with Volt Meter.

Before Discharging
-> LED ON

After Discharging
-> LED OFF



※ When holding SMPS, be careful to touch only the combs marked in blue

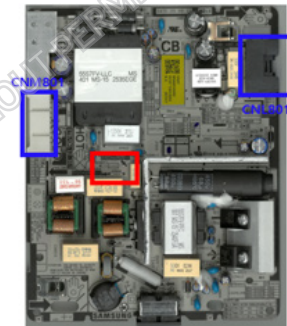
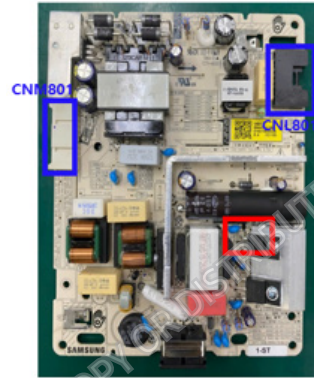
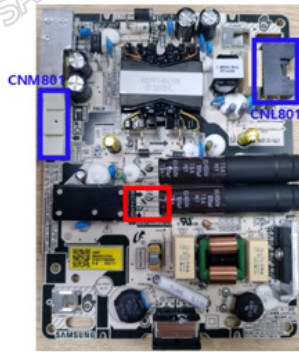
10-1

※ Discharge Point

43"

50"

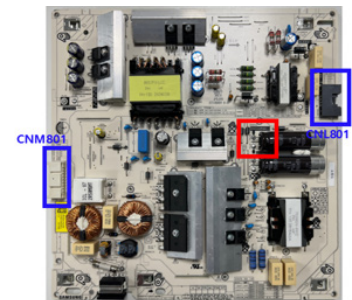
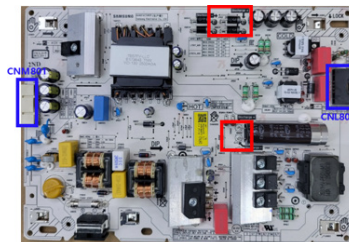
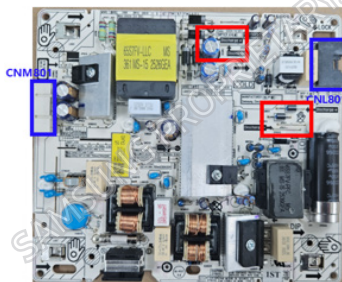
55"



65"

75"

85"

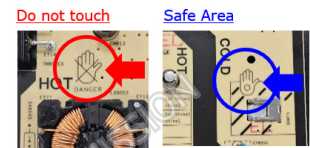
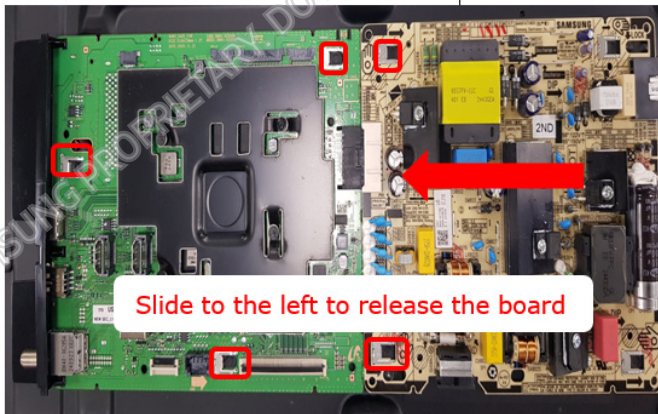


10-2

- Remove MAIN-SMPS(3in1) board.
- 1) Push and hold down BLU connector tab to release it's panel lock connection.
 - 2) Lift to release the lock tab on upper right side of Board. (Step 4 will assist)
 - 3) Locate a lock notch. (lift up)
 - 4) Use Open Jig in notch to help release & smoothly slide SMPS to the Left. (While pressing the lock tap by hand, use JIG to lift the SMPS and separate the SMPS.)
- ※ Do not touch the 'hand icon with the X mark'

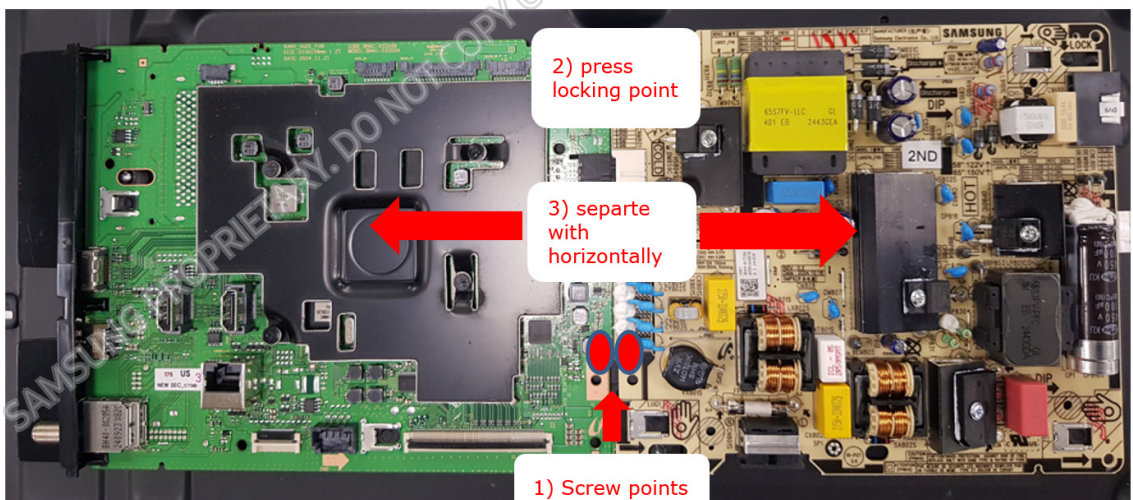


1 2 3 4



11

- Separate Main board and SMPS board.
- There are 2 screw points. After disassembling the screw, press the locking of the Main-SMPS connector(black) and separate it by applying force in the horizontal direction.



12

- Completely Disassembly



13

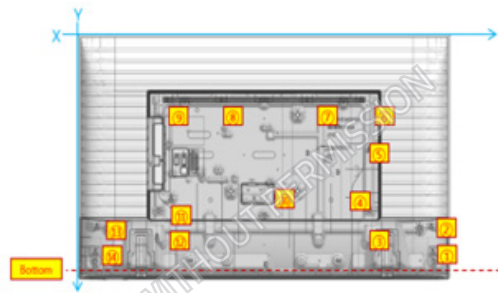
- Assembly is in reverse order of decomposition
- ※ Caution: Be careful not to damage the bottom COF when placing the Rear Cover. Please press and secure so that it can be reassembled by referring to the inner hook position

Inner Hook Position

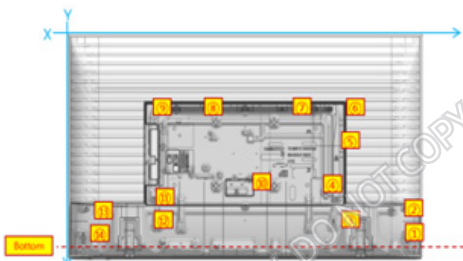
[43"]



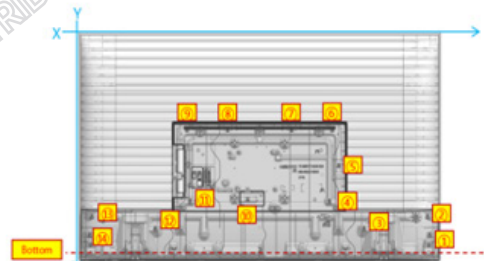
[50"]



[55"]



[65"]



[75"]



[85"]



3. Troubleshooting

3-1. Basic Troubleshooting

For more information, refer to "**Troubleshooting**" in the e-Manual.

 >  (left directional button) >  Settings > Support > Open e-Manual > Troubleshooting

If none of the troubleshooting tips apply, please visit "www.samsung.com" and click Support or contact the Samsung service center.

- This panel is made up of sub pixels which require sophisticated technology to produce. There may be, however, a few bright or dark pixels on the screen. These pixels will have no impact on the performance of the product.
- To keep your TV in optimum condition, upgrade to the latest software. Use the Update Now or Auto Update functions on the TV's menu

( >  (left directional button) >  Settings > Support > Software Update > Update Now or Auto Update).

The TV won't turn on.

- Make sure that the power cord is securely plugged into the product and the wall outlet.
- Make sure that the wall outlet is working and the remote control sensor at the bottom of the TV is lit and glowing a solid red.
- Try pressing the TV Controller button at the bottom of the TV to make sure that the problem is not with the remote control. If the TV turns on, refer to "The remote control does not work."

3-2. After Replacing Main Board

■ Setting TV into Factory Mode



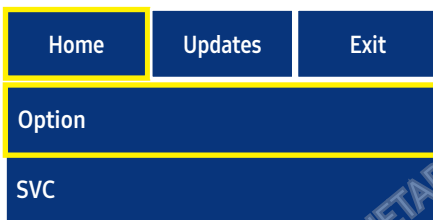
Need IR Remote
BN59-01301A

Samsung IR Remote (Limited Operation)

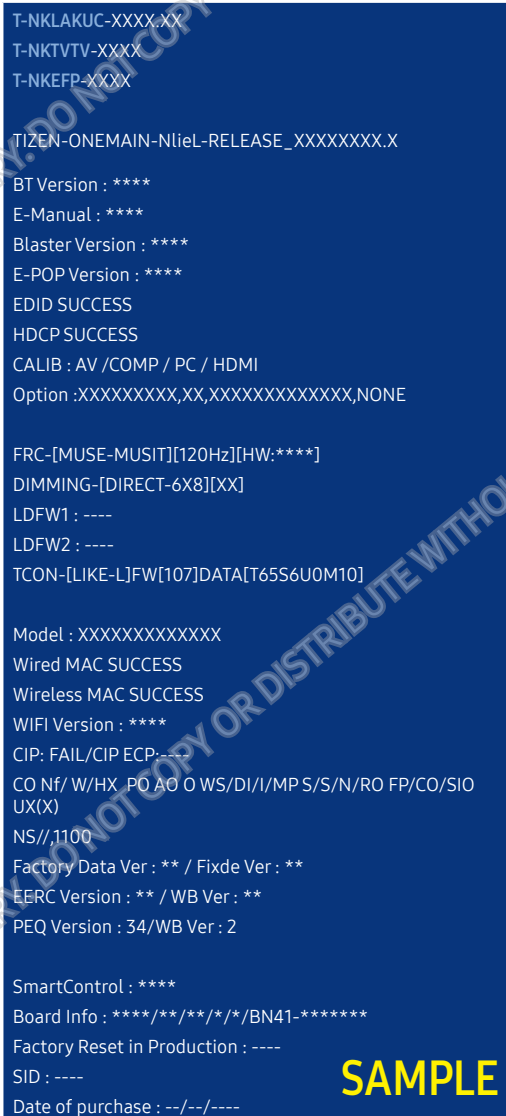
1. TV Power Standby.
2. Press as follows.

- Remote Button NTSC MUTE → 1 → 8 → 2 → POWER

First Screen Appearing in Factory Mode



First Screen
Appearing in Factory Mode



Important Screen info:

- Micom Version
- Sub Micom (TV)
- Sub Micom (OC)
- Tizen Platform Information
- BT Version
- E-Manual
- E-POP Version
- EDID Success (status)
- HDCP Success (status)
- HDMISW Version
- Option
- FRC
- Dimming
- LD FW version
- T-Con
- Model
- Wired MAC Success
- Wireless MAC Success
- WiFi Version
- CO Status ("0" Operational)
- Factory Data Version
- EERC Version
- Date of Purchase – default setting date (Factory Reset default)

※ The factory mode menu may vary depending on the model.

MAIN : Option, MODE : SATELLITE, RES : NOSIGNAL

Home	Updates	Exit
Type	65B6ZE7C	
Local Set	US	
SW MODEL	QCQ700	
Front Color	QAQM700C-C	
Sound Type	-70-422-55	

SAMPLE

■ Replacing Main Board

When replacing Main Board, certain values needs to be manually input in Factory menu to complete the replacement.

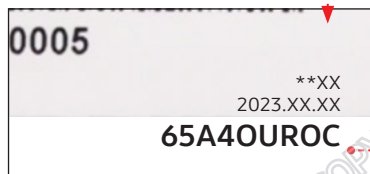
Steps to Replace Main Board (Example)

1. Enter Factory Menu (Use IR Remote).
 - MUTE → 1 → 8 → 2 → POWER
2. Change Each value according to the TV Model.
 - Type, Local Set, SW Model, Front Color must be set to correct value.

① Type : Check Panel label (located in the back chassis of panel) and choose same Type code from the list



SAMPLE



<Type in Panel Label>

Home	Updates	Exit
Factory Reset		
Type	65A4OUROC	
Writing Type		
Local Set	NA	
SW Model	QCQS90	
Front Color	S90CB-Q65CM1	
Writing Fornt Color		
Sound Type		
Writing Sound Type index		
Model Code		

Panel List				
75S1AUATC	85L6AU3QC	50K6AU0QC	50K6AU1QC	55X6AU0QC
55X6AU1QC	43S6AU0QC	43S6AU1QC	43L6AU2QC	43L6AU3QC
50L6AU2QC	50L6AU3QC	50Y6AU1QC	65Y6AU1QC	83X10UHOC
77X10UHOC	32B6AF1QA	85L1AUCSC	75S1AUCSC	65S1AUCSC
85L1AU7TC	NONE_24	85D4ZU5TD	85K4ZU5TD	75S4ZU5TD
75K4ZU5TD	65L4ZU5TD	65K4ZU5TD	55L4ZU5TD	55K4ZU5TD
98S1QU9TD	85L4ZU5TD	85K4ZU9TD	75S6AU5TU	75K4ZU9TD
65L4ZU9TD	43S4ZU9TD	55L4ZU9TD	55S4ZU9TD	50D4ZU9TD
50K4ZU9TD	43D4ZU9TD	43D4ZU9TD	85L1AU8TD	85S1AU8TD
75S1AU8TD	65S1AU8TD	55L1AU8TD	55S1AU8TD	85L1AU8TD
85L1AUATC	75S1AUATD	65S1AUATD	55L1AUATD	55S1AUATD
85L1RUAQD	85S1RUAQD	75S1RUAQD	75K1RUAQD	65S1RUAQD
65L1RUAQD	55S1RUAQD	55L1RUAQD	50K6RUAQD	50L6RUAQD
43L6RUAQD	43K6RUAQD	85S1AU7QD	85L1AU7QD	75S1AU7QD
75Y1AU7QD	65S1AU7QD	65Y1AU7QD	55S1AU7QD	55L1AU7QD
85S6AU0QD	85D6AU0QD	75S6AU0QD	75Y6AU0QD	70Y6AU0QD

<Type list in the Factory Menu>

- ※ Reference to **Type** list in the Factory Menu
- ※ The factory mode menu may vary depending on the model.

Troubleshooting

- ② Local Set : Set according to Local region(country)
- ③ SW Model : Check Label Rating of the TV(located on the Rear Cover)
 - SW Model is digits after "/" in Version No.
 - Choose same SW Model code from the list.

SAMSUNG

Model / MODELE NO. : **QN65Q80TAF**
 Type No. : **QN65Q80TA**
 Typical power : **W**
 Error-WATT is necessary!

Contains Tx FCC ID:A3LWCT731M

MADE IN KOREA(SEC)
 FABRIQUE AU COREE(SEC)
 HECHO EN COREA(SEC)

SAMSUNG ELECTRONICS AMERICA INC.
 85 CHALLENGER ROAD, RIDGEFIELD PARK N.J. 07660-2112, U.S.A.

This device complies with Part 15 of the FCC Rules. Operation is subject to the following two conditions: (1) this device may not cause harmful interference, and (2) this device must accept any interference received, including interference that may cause undesired operation.

MFD./FABRIQUE: DECEMBER 2019

Model Code : **QN65Q80TAFXZA**
 Version No : **XXXX/XXXXXX/QTQ80D-Q65TD1**
 S/N : *****Z

Television Receiver
US LISTED
 E232198

7*****

CAUTION
 RISK OF ELECTRIC SHOCK
 DO NOT OPEN

WARNING : TO PREVENT FIRE OR SHOCK HAZARD
 DO NOT EXPOSE THIS UNIT TO RAIN OR MOISTURE
 AVIS : RISQUE DE CHOC ELECTRIQUE - NE PAS OUVRI

QR Code

<"SW Model" in Label Rating>

Home	Updates	Exit
Factory Reset		
Type	50L6AU1QD	
Writing Type		
Local Set	US	
SW Model	Q60DD	
Front Color	Q60DG-Q50DG1	
Writing Fornt Color		
Sound Type		
Writing Sound Type index		
Model Code		

* Reference to SW Model list in the Factory Menu

QRQ85_OC	QRQ80_OC	QRQ75
QRQ900B	URU710D	URU730D
URU74A0	URU7800	QRQ69
QRQ65A	LS05R	URU740D
URU7470	URU7790	URU77FA
NONE_20	Q70N	QTQ950
QTQ90	QTQ70	QTQ60
LS01T	LS03T	LS05T
HTQ750	HLS03T	HTS030
Q70	QTQ6X	UTU850I

SAMPLE

④ Front Color :Check Label Rating of the TV

SAMSUNG

Model / MODELE NO.: **QN65Q80TAF**
 Type No.: **QN65Q80TA**
 Typical power : **W**
 Error-WATT is necessary!

Contains Tx FCC ID:A3LWCT731M


MADE IN KOREA(SEC)
 FABRIQUE AU CORÉE(SEC)
 HECHO EN COREA(SEC)


SAMSUNG ELECTRONICS AMERICA INC.
 85 CHALLENGER ROAD, RIDGEFIELD PARK N.J. 07660-2112, U.S.A.

This device complies with Part 15 of the FCC Rules. Operation is subject to the following two conditions: (1) this device may not cause harmful interference, and (2) this device must accept any interference received, including interference that may cause undesired operation.


MFD./FABRIQUE: DECEMBER 2019

Model Code : **QN65Q80TAFXZA**
 Version No : **XXXX / XXXXXXXX / QTQ80D-Q65TD1**
 S/N : *****Z







CAUTION
RISK OF ELECTRIC SHOCK
DO NOT OPEN



WARNING : TO PREVENT FIRE OR SHOCK HAZARD
 DO NOT EXPOSE THIS UNIT TO RAIN OR MOISTURE
 AVIS : RISQUE DE CHOC ELECTRIQUE - NE PAS OUVRIR

Home	Updates	Exit
Factory Reset		
Type		65A4OUROC
Writing Type		
Local Set		US
SW Model		Q60D
Front Color		Q60DG-Q50DG1
Writing Fornt Color		
Sound Type		
Writing Sound Type index		
Model Code		

* Reference to **Front Color** list in the Factory Menu

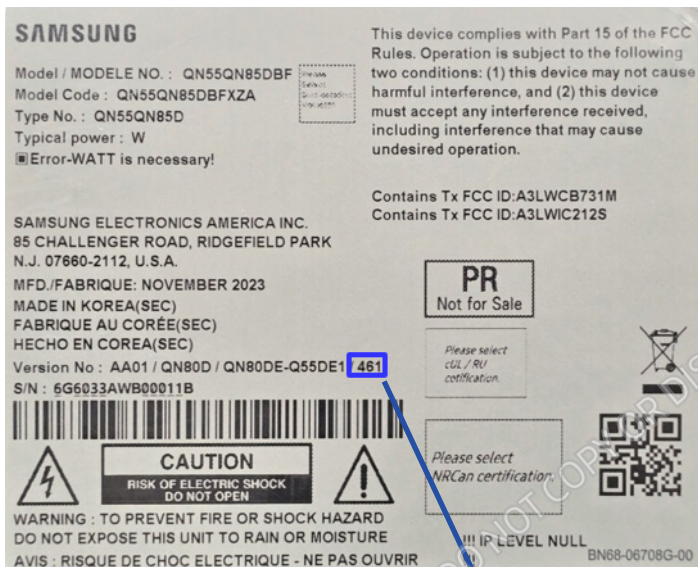
STU1	QTQ950SA-Q75TA1	F-F-NSK-40	F-F-NSK-40
STB2	QTQ800B-Q65TB1	QTQ950SA-Q85TA1	F-F-NSK-52
TP2	QTQ95P-Q75TP2	QTQ800B-Q65TB1	QTQ950A-Q65TU1
TC1	QTQ90T-Q85TC1	QTQ800B-Q75TB2	QTQ800B-Q75TB1
TC2	QTQ80T-Q49TD1	QTQ95P-Q75TP2	QTQ800B-Q82TB2
D1	QTQ80T-Q49TD2	QTQ90T-Q85TC1	QTQ90T-Q85TC1
D2	QTQ80T-Q49TD3	QTQ90T-Q85TC2	QTQ90T-Q85TC2
E1	QTQ70T-Q65TE1	QTQ80T-Q55TD1	QTQ80T-Q65TD1
E2	QTQ70T-Q75TE2	QTQ80T-Q55TD2	QTQ80T-Q65TD2
E3	QTQ60F-Q43TF1	QTQ80T-Q55TD3	QTQ80T-Q65TD3
F1	QTQ60F-Q75TF1	QTQ70T-Q75TE1	QTQ70T-Q85TE1
		QTQ70T-Q85TE2	QTQ70T-Q55TE3
		QTQ60F-Q50TF1	QTQ60F-Q55TF1
		QTQ60F-Q43TF2	QTQ60F-Q50TF2
		QTQ60F-Q43TF3	QTQ60F-Q43TF3

<"Front Color" in Label Rating>

SAMPLE

SAMSUNG PROPRIETARY. DO NOT COPY OR DISTRIBUTE WITHOUT PERMISSION

⑤ Sound type index :Check Label Rating of the TV

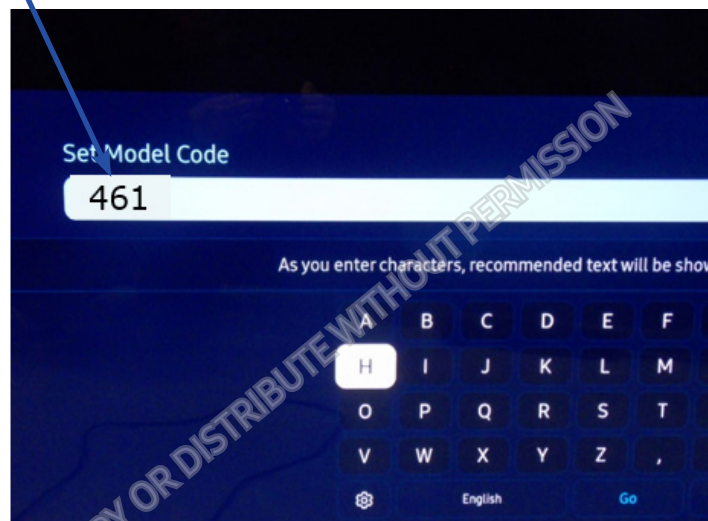


<"Sound Type" in Label Rating>

SAMPLE

Home	Updates	Exit
Factory Reset		
Type	65A4OUROC	
Writing Type		
Local Set	US	
SW Model	Q60D	
Front Color	QC60DG-Q50DG1	
Writing Front Color		
Sound Type	Q60DG-20-2-50	
Writing Front Color		
Model Code		

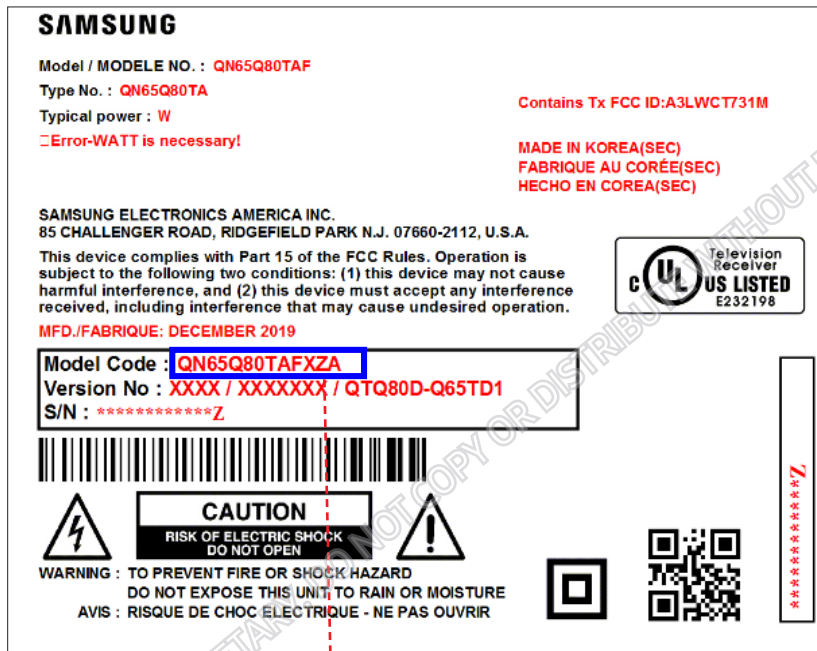
- ※ Reference to **Sound Type** list in the Factory Menu
- ※ The factory mode menu may vary depending on the model.



[Writing Sound Type Index in Factory Menu]

After entering the value, check that the sound type has been changed to a specific value, not a default.

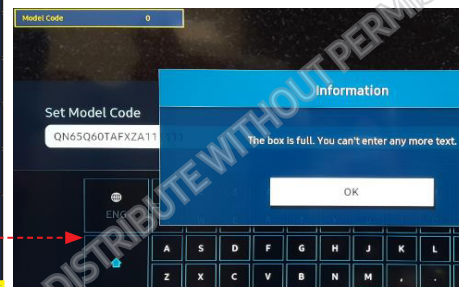
⑥ Model code :Check Label Rating of the TV



Home	Updates	Exit
Factory Reset		
Type	65A4OUROC	
Writing Type		
Local Set	US	
SW Model	Q60D	
Front Color	QC60DG-Q50DG1	
Writing Front Color		
Sound Type	Q60DG-20-2-50	
Writing Front Color		
Model Code	Q60DG****	

<Set Model Code>

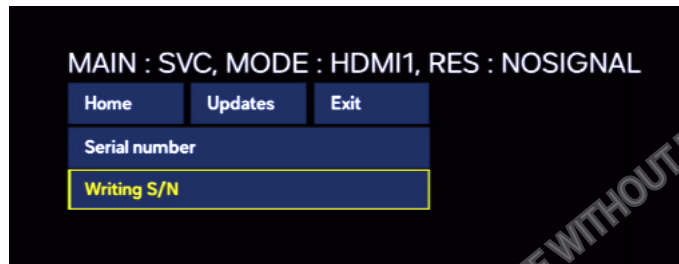
SAMPLE



<Model Code digits exceeded >
(over 19 digits)

Troubleshooting

■ SVC - S/N - Writing S/N



<Writing S/N : Check Label Rating of the TV >

SAMSUNG

SAMPLE

Model / MODELE NO. : **QN65Q80TAF**

Type No. : **QN65Q80TA**

Typical power : **W**

⚠ **Error-WATT is necessary!**

Contains Tx FCC ID: **A3LWCT731M**

**MADE IN KOREA(SEC)
FABRIQUE AU CORÉE(SEC)
HECHO EN COREA(SEC)**

SAMSUNG ELECTRONICS AMERICA INC.
85 CHALLENGER ROAD, RIDGEFIELD PARK N.J. 07660-2112, U.S.A.

This device complies with Part 15 of the FCC Rules. Operation is subject to the following two conditions: (1) this device may not cause harmful interference, and (2) this device must accept any interference received, including interference that may cause undesired operation.



MFD./FABRIQUE: **DECEMBER 2019**

Model Code : **QN65Q80TAFXZA**
Version No : **XXXX / XXXXXX / QTQ80D-Q65TD1**
S/N : *******Z**



**WARNING : TO PREVENT FIRE OR SHOCK HAZARD
DO NOT EXPOSE THIS UNIT TO RAIN OR MOISTURE
AVIS : RISQUE DE CHOC ELECTRIQUE - NE PAS OUVRI**

