

# ASPIRA

## TIGHT TOP

### KEY FEATURES

#### QUILTING



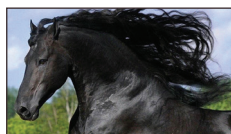
TUFTED

#### COMFORT LAYERS / UPHOLSTERY



##### LUXURIOUS COTTON

Provides wonderful comfort and breathability allowing air to circulate around your body



##### HORSE HAIR PAD

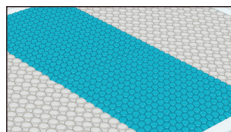
Natural fibres wick away excess heat and moisture allowing fresh air to circulate while enhancing coil comfort and support



##### LATEX

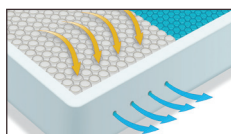
Naturally conforms to body contours for optimal orthopedic support

#### COIL SYSTEM



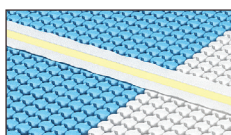
##### POSTURIZED CENTRE SUPPORT

Provides increased support and proper alignment of your spine



##### AIRFLOW SURROUND FOAM

Airflow Surround Foam Encasement for increased sleeping surface, a strong sitting edge and enhanced cooling



##### PATENTED MOTION SEPARATION FOAM

Patented Motion Separation Foam isolates partner's movement to provide the best in undisturbed sleep

#### ◆ COIL SYSTEM

- ◆ 2150 Pocket Coil with Airflow Foam Surround Encasement
- ◆ Posturized Centre Third with Motion Separation Foam

#### ◆ QUILTING

- ◆ Imported Damask
- ◆ Tufted

#### ◆ COMFORT LAYERS/UPHOLSTERY

- ◆ 3/4" Luxurious Cotton
- ◆ Horse Hair Pad
- ◆ 1" Latex
- ◆ 1" Firm Foam

#### ◆ TOP OF COIL

- ◆ Flexatron Pad

#### ◆ BOTTOM OF COIL

- ◆ 2" Firm Foam

#### ◆ FABRIC

- |              |        |
|--------------|--------|
| ◆ Panel      | Desire |
| ◆ Border     | Troy   |
| ◆ Foundation | Troy   |

#### ◆ FOUNDATION

- ◆ Kingsdown Foundation

#### ◆ WARRANTY

- ◆ 10 years

#### ◆ COIL COUNTS

	Twin	Double	Queen	King
◆ Pocket	1290	1828	2150	2730

