

# caracole



## TURNING POINT

uph-422-032-a

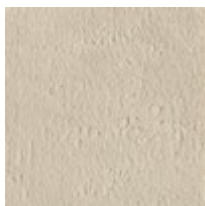
**COLLECTION:** CARACOLE UPHOLSTERY

**DIMENSIONS:** 33W x 29.5D x 31.5H

Dressed in a creamy embossed velvet, this sleek swivel chair brings to mind glamorous designs from the mid-century modern era. Its softly curved silhouette is beautifully balanced on uniquely shaped, hourglass ribbon legs for a note of luxe in a Whisper of Gold finish. A standout on its own, even more dramatic in pairs.

**CONSTRUCTION:** Webbed seat cushion with foam.

**FABRIC:**



Body Fabric: 2909-34CC

