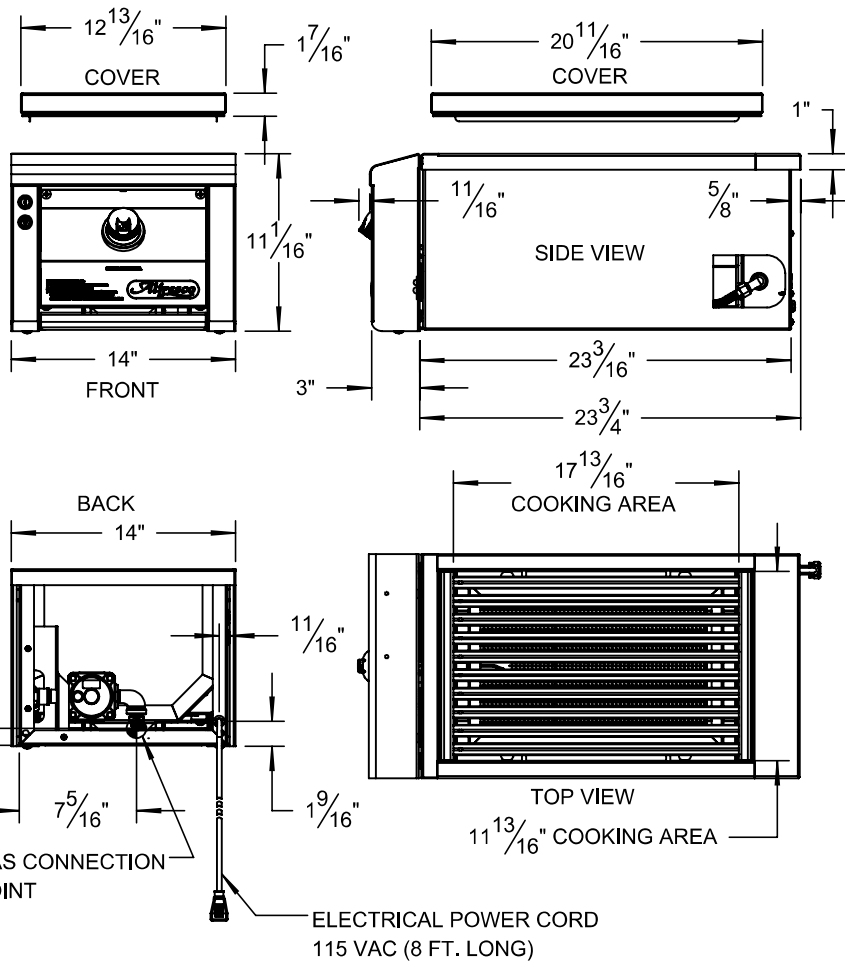
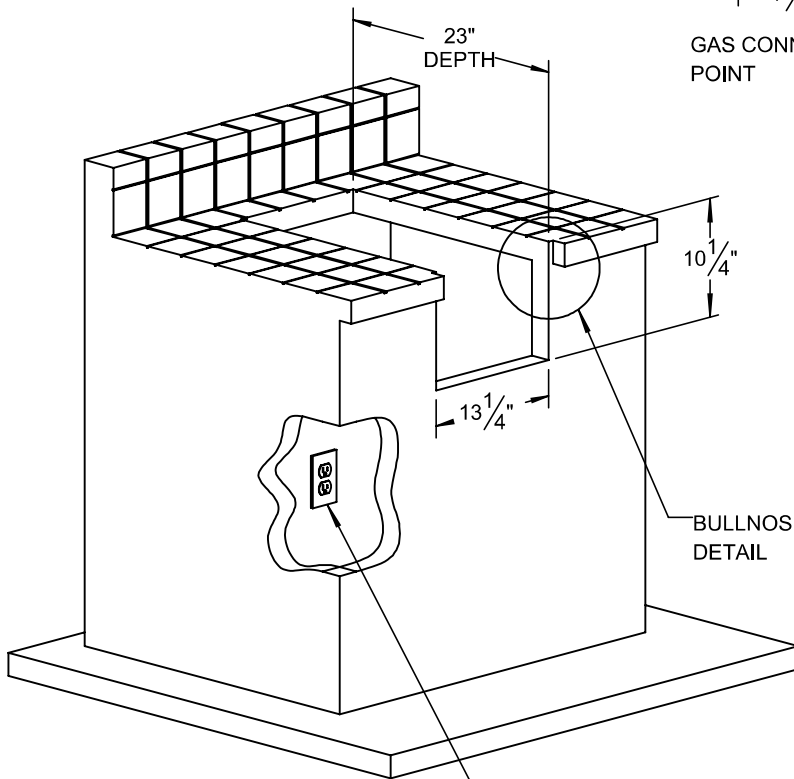
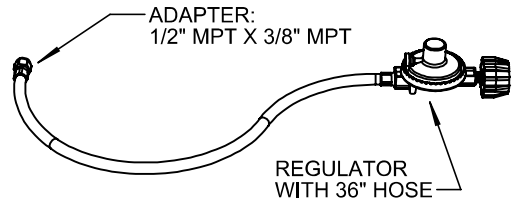


TYPICAL AXESZ INSTALLATION

COUNTERTOP CUTOUT REQUIREMENTS



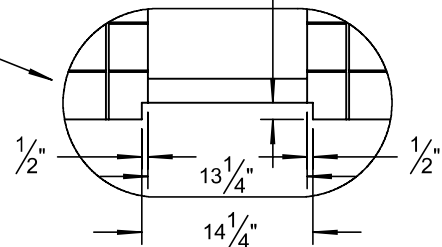
LP GAS SETUP:



NOTE: ☐ STANDARD UNIT HAS A NATURAL GAS (NG) CONNECTION WITH 1/2" FPT FITTING.

IF LIQUID PROPANE (LP) OPTION IS ORDERED THE UNIT IS SUPPLIED WITH A REGULATOR, HOSE AND ADAPTER FITTING AS SHOWN.

DEPTH EQUAL TO BULLNOSE OVERHANG



SPECIFICATIONS:
 BTUH = 30,200 (MAX)
 FUEL = NG @ 5" W.C. OR LP @ 10" W.C.
 ELECTRICAL POWER = 115 VAC - 50/60 Hz. - 10 mA
 GAS CONNECTION = 1/2" NPT (NG) OR 3/8" ODF (LP)

Alfresco

SUPERIOR EQUIPMENT SOLUTIONS
 7039 EAST SLAUSON AVENUE
 COMMERCE, CA. 90040

THE INFORMATION CONTAINED IN THIS DRAWING IS THE SOLE PROPERTY OF SUPERIOR EQUIPMENT SOLUTIONS INC. ANY REPRODUCTION IN PART OR AS A WHOLE WITHOUT WRITTEN PERMISSION FROM SUPERIOR EQUIPMENT SOLUTIONS, INC. IS PROHIBITED.

DRAWN BY: ADRIAN CRISCI
CREATED: 5/16/2018 6:44:31 AM

PROJECT TITLE:

AXESZ

DRAWING TITLE:

AXESZ SIDE BURNER SPECIFICATIONS - SN° 18-00000 FORWARD

DRAWING NO.: AXESZ (REV-A) SPEC SHEET

SHEET 1 OF 1