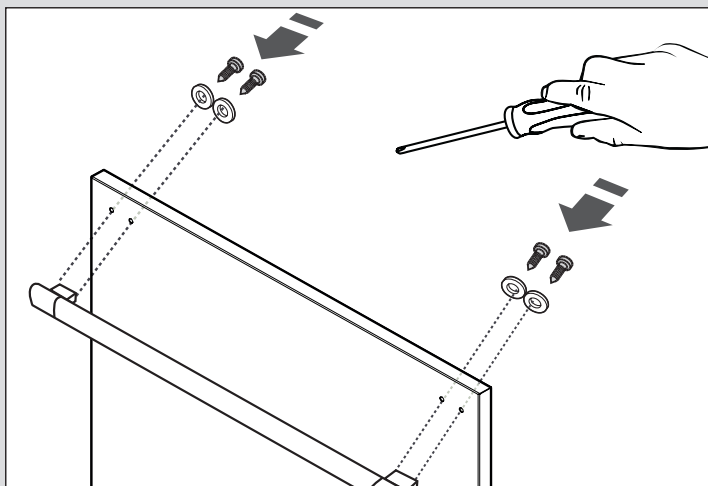
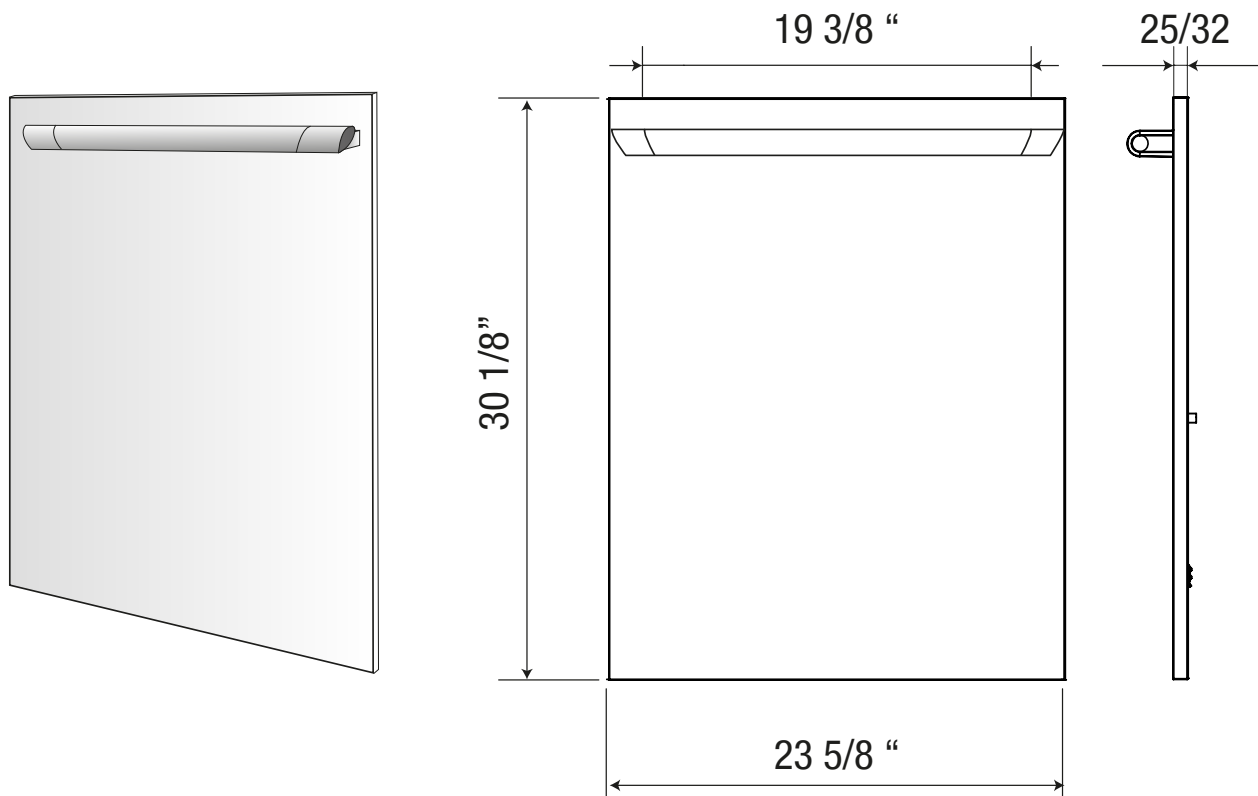


# FORZA™

## Dishwasher Front Panel

### INSTALLATION GUIDE



**1**

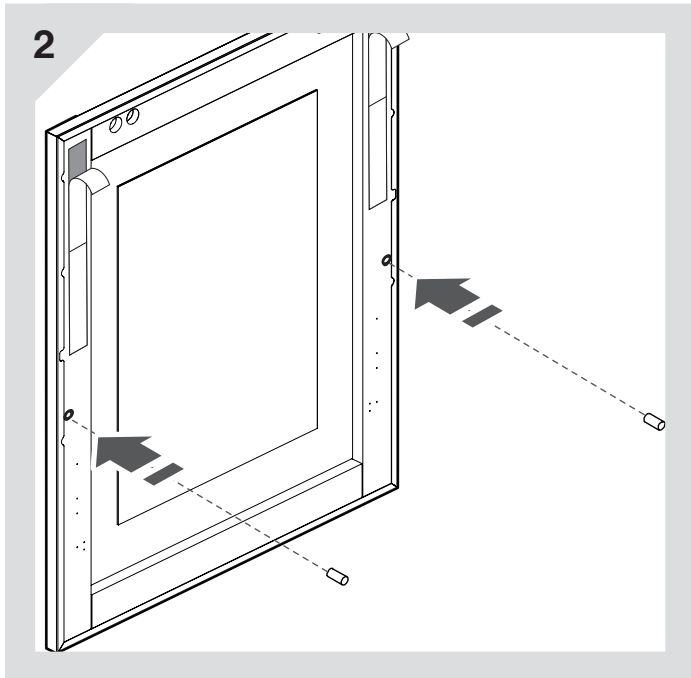
#### FIX THE HANDLE TO THE PANEL

Depending from your integrated dishwasher door, use one of the following installation sequences  
**TYPE A-B or C**

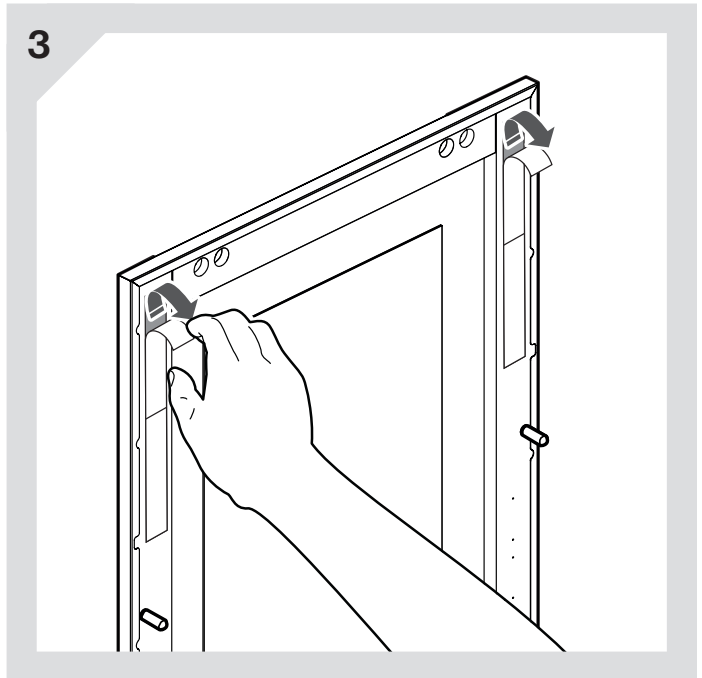


# FORZA™

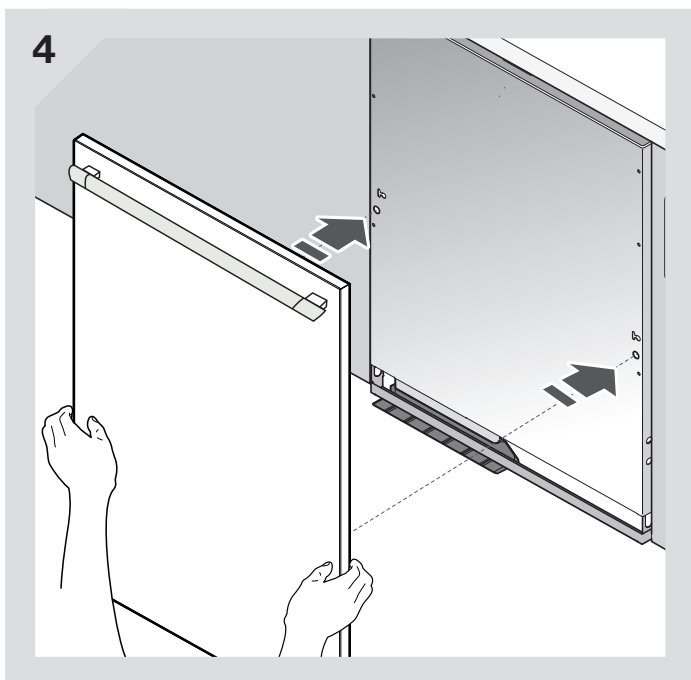
## TYPE A



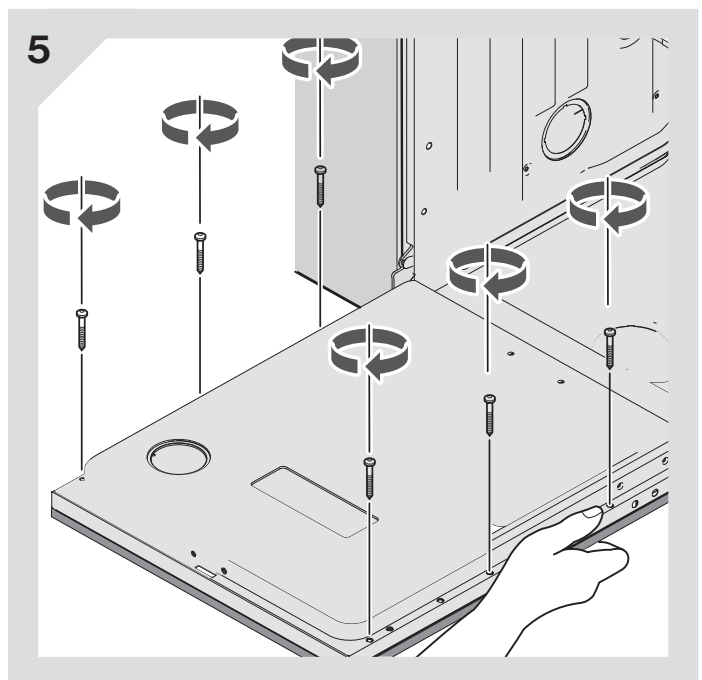
**INSERT THE PLUGS**



**REMOVE THE BIADHESIVE FILM**



**INSERT THE PANEL INTO THE HOLES  
AND HOLD FOR ABOUT 1 MIN.**

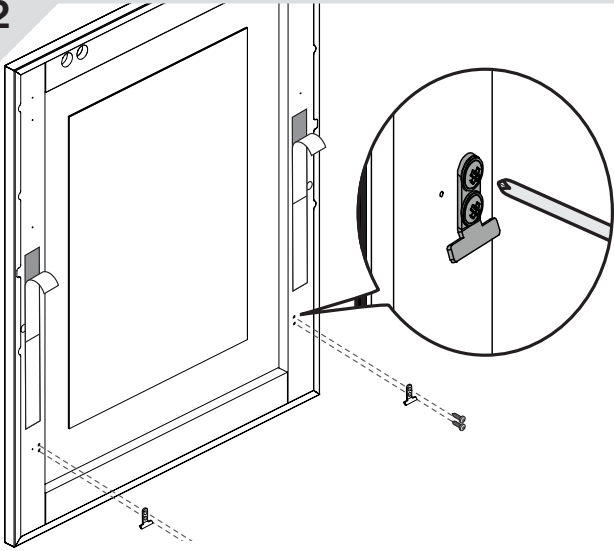


**FIX THE PANEL WITH THE SCREWS**

# FORZA™

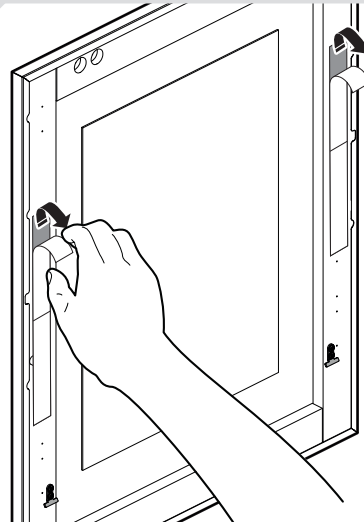
## TYPE B

2



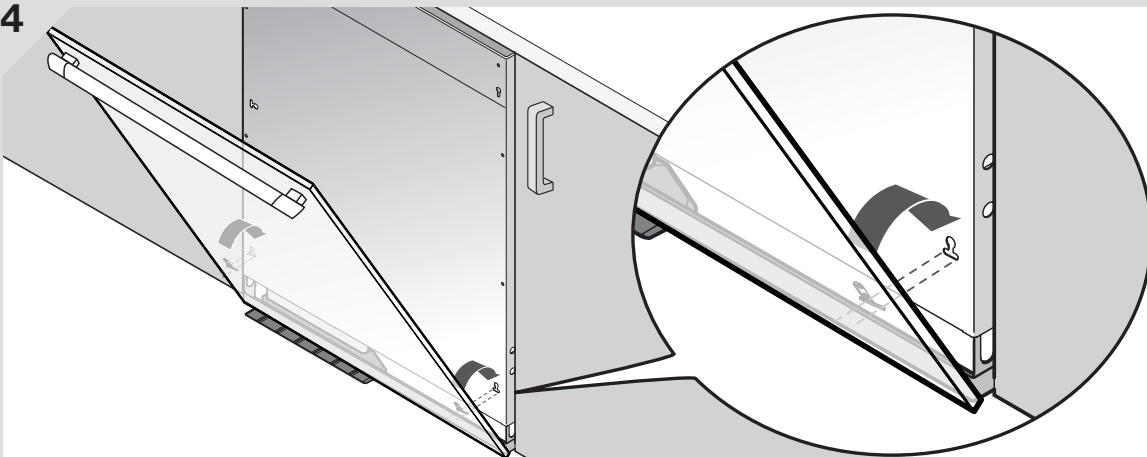
**FIX THE BRACKETS WITH 4 SCREWS**

3



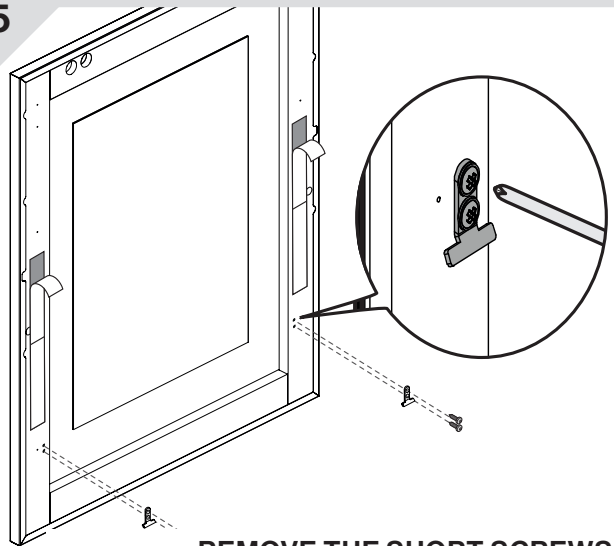
**REMOVE THE BIADHESIVE FILM**

4



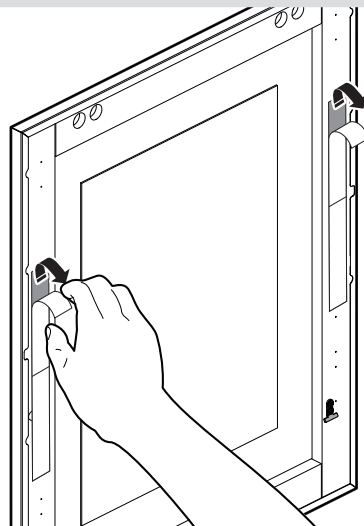
**INSERT THE PANEL INTO THE SLOTS AND HOLD FOR ABOUT 1 MIN.**

5



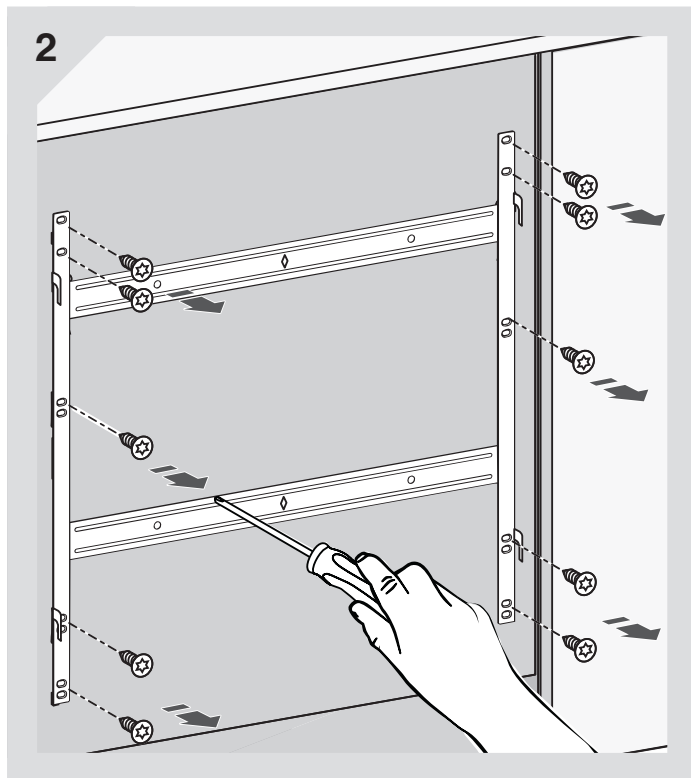
**REMOVE THE SHORT SCREWS**

6

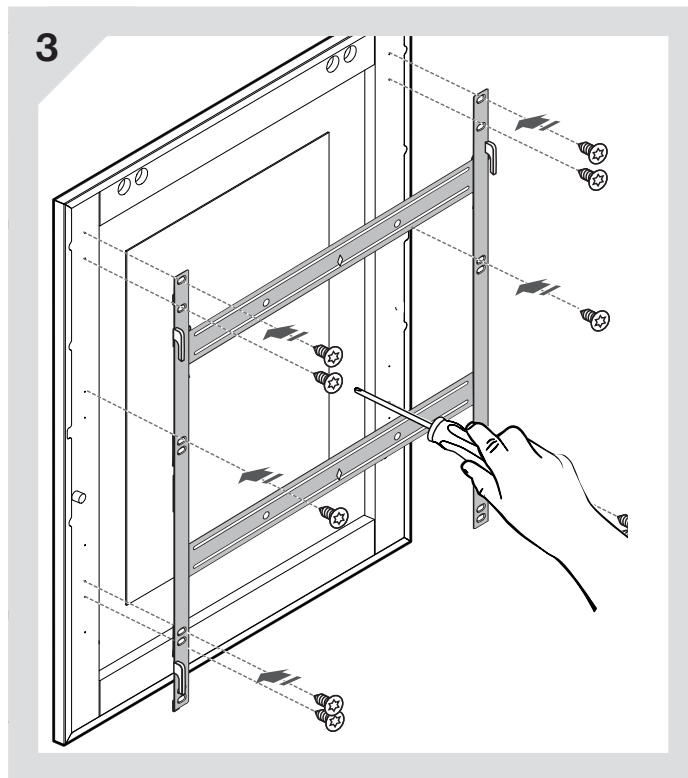


**FIX THE PANEL WITH THE LONG SCREWS**

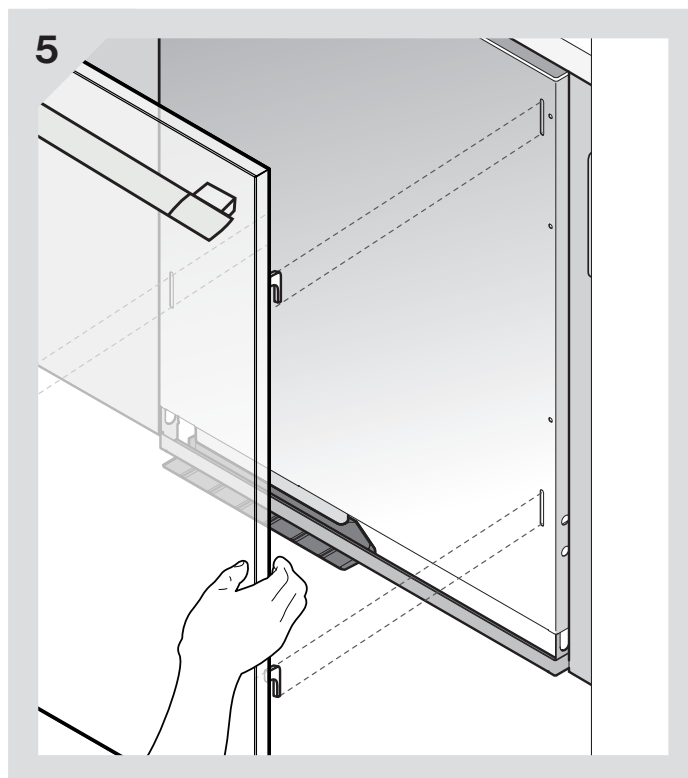
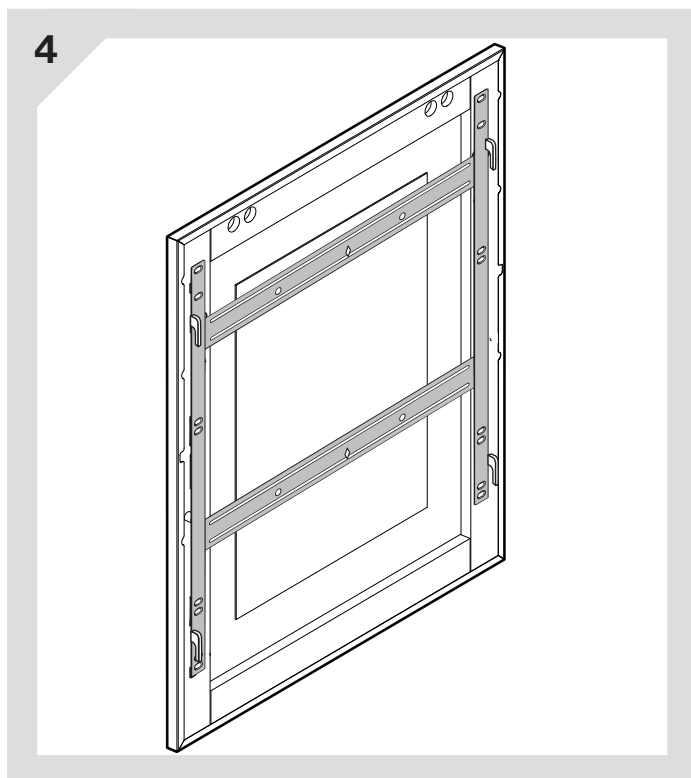
## TYPE C



UNSCREW THE FRAME



FIX THE FRAME TO THE PANEL



INSERT THE PANEL INTO THE SLOTS