

V I K I N G

R V L



## Installation Guide

RVL - 36" or 48" Pureline Pro Ceiling Hood

MVCEH636BK

MVCEH636WH

MVCEH636SS

MVCEH648BK

MVCEH648WH

MVCEH648SS

# CONTENT

<b>SAFETY AND ASSEMBLY REGULATIONS . .</b>	<b>3</b>
<b>Installation . . . . .</b>	<b>6</b>
Installation with exhaust opening to the RIGHT. .	9
Installation with exhaust opening to the left/front/rear	11
Installation with exhaust opening UPWARDS . .	13
Dismantling the ceiling unit . . . . .	15
<b>Dimensions . . . . .</b>	<b>16</b>
36" Pureline Pro Ceiling Hood (MVCEH636BK, MVCEH636WH, MVCEH636SS) . . . . .	16
48" Pureline Pro Ceiling Hood (MVCEH648BK, MVCEH648WH, MVCEH648SS) . . . . .	17
<b>Service Information . . . . .</b>	<b>18</b>



# SAFETY AND ASSEMBLY REGULATIONS

These are the installation instructions for the Viking RVL unit shown on the cover. Carefully read the safety instructions, installation instructions and user manual before installation and putting it into operation.

The safety instructions are listed in a separate booklet supplied with the appliance and listed on our website [www.VikingRange.com](http://www.VikingRange.com).

Follow the safety instructions, installation instructions and user manual to prevent injury and material damage.

This manual makes use of a number of symbols. The meaning of these symbols are given below.

Symbol	Meaning	Action
	Indication	Explanation of an indication on the hood.
	Information/ Warning	This symbol indicates an important tip or a dangerous situation.

## Installation instructions for the appliance

- In order to ensure that the cooking vapors are taken up in an optimal way, the appliance, or the structure into which the appliance is being installed, should extend over the hob. When using your own structure, ensure that the appliance is installed centered above the hob.
- For optimal operation, the hob should not be larger than the appliance or the structure into which the appliance is installed.
- For easier installation of the appliance, it is advisable to carry it out with at least 2 people.



### Install the exhaust duct

For optimum performance of the ceiling hood it is important to pay attention to the following points:

- The motor outlet has a diameter of 6 inches. It is recommended to connect an exhaust duct with a diameter of 6 inches to this.
- You will achieve the best operation and lowest possible noise level for the appliance by connecting the extraction duct by as short a route as possible, with as few bends as possible and using the prescribed diameter.
- Use smooth, non-flammable pipes with an internal diameter that is equal to the external diameter of the connection nozzle of the hood.
- Do not reduce the exhaust diameter. This will lower the capacity and raise the noise level.
- Avoid right-angle bends. Use rounded bends for effective airflow.
- Use of a flexible extraction hose should be kept to a minimum, and it should only be used for making small bridging sections, for example as the link between the outlet nozzle and the extraction duct. Maximally extend flexible ducts and cut them to size.
- Ensure that the extraction duct is not crushed and that there are no kinks in the duct.
- Use a hose clamp or aluminum tape for airtight connections.
- With a horizontal extraction duct, install it at a slight incline to ensure that condensation does not run back to the appliance.
- Condensation may arise as a result of temperature differences if the extraction duct passes through cool rooms. Ensure that the extraction duct is insulated.
- In case of an exhaust pipe through the outside wall passing a cavity wall, make sure that the exhaust duct fully bridges the cavity and slightly declines to the outside.
- In case of an exhaust pipe through the wall, use a wall vent.
- In case of an exhaust pipe through the roof, use a double-walled roof passage with adequate outlet capacity.
- When connecting to a short extraction duct, it may be desirable to install a non-return valve in the duct in order to prevent backdraft from wind.
- Make sure that sufficient air is supplied. Fresh air can be supplied by slightly opening a window or an outside door or by installing an inlet grate.
- The appliance may not be connected to a flue or chimney that is currently in use, or that serves as ventilation for rooms with hearths.

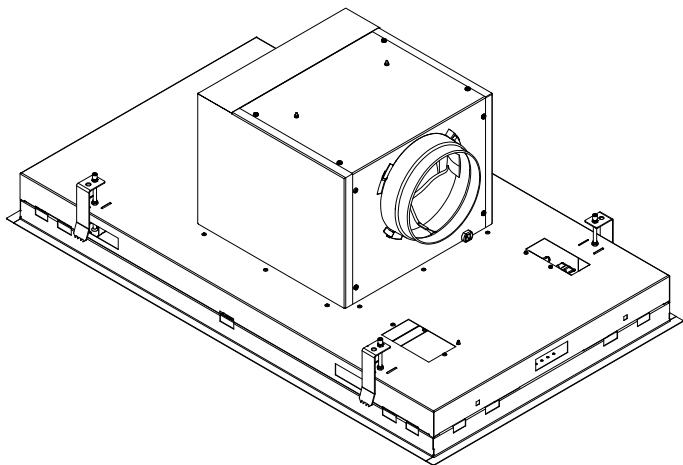
- When using the appliance with air extraction to the outside, there must be adequate air supply in the room where the appliance has been installed / is positioned, so that fresh air can flow in.



### **Installation instructions for the outlet**

- The appliance may only be connected with the power plug to a socket with an earth (110 V - 60 Hz).
- Safety is only assured when the appliance is connected to an earth cable in accordance with the instructions laid down.
- The appliance must be able to be disconnected from the power at any desired point.
- Do not use an extension cable for the connection to the electrical mains.
- Electric shock: never switch on a faulty appliance, this could cause an electric shock. Take the power plug out of the socket, or switch off at the distribution cabinet. Contact the Viking service department.
- Repairs and replacing faulty or damaged wiring must only be carried out by technicians who have undergone instruction by Viking Range.
- Moisture that has got into the appliance may cause an electric shock. Do not use a high pressure or steam cleaner

# INSTALLATION



## General



The ceiling unit can be built into plates with a thickness of  $11/16$  -  $1\ 3/8$  inches. Do not mount directly into gypsum board; always make sure there is reinforcement for the tightening of the mounting clamps. Make sure there is a socket near the ceiling unit, so that the power may, at all times, be removed from the ceiling unit.



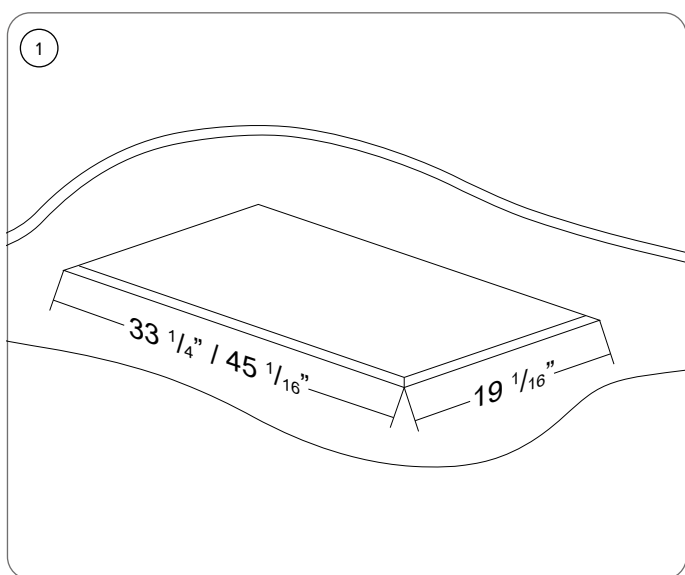
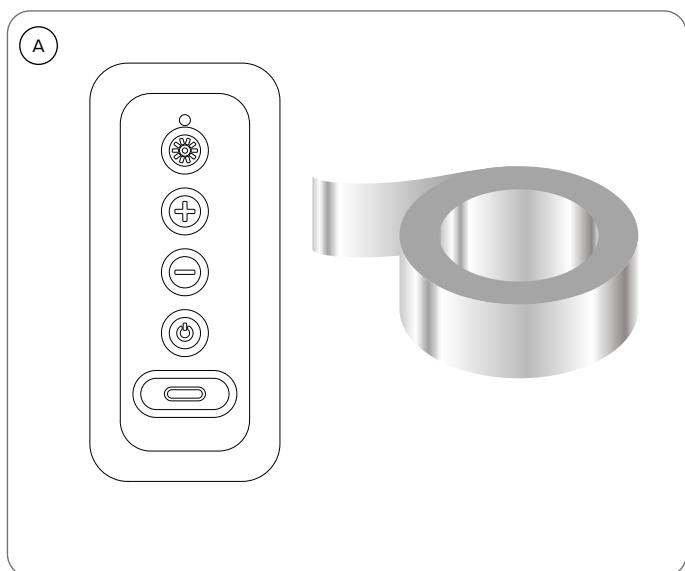
Because of the substantial own weight of the hood, the ceiling must have sufficient load bearing capacity.



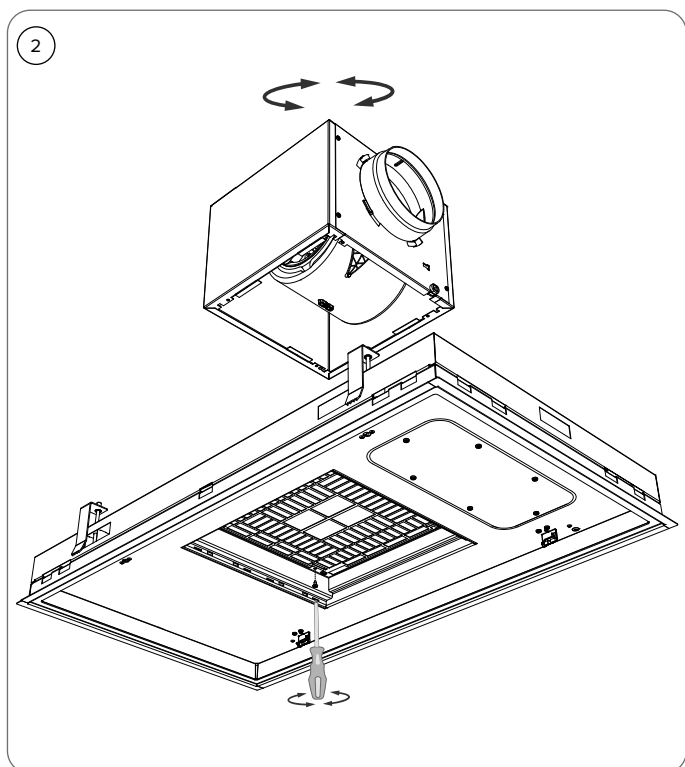
The recommended mounting height for an electric or ceramic cooking plate is min. 24 inches and max. 63 inches.

The mounting height is min. 30 inches and max. 63 inches above a cooking surface with max 50,000 BTU.

The mounting height is min. 40 inches and max. 63 inches above a cooking surface with max 70,000 BTU.



- ① Make a cut-out opening:
- For 36" Pureline Pro Ceiling Hood (MVCEH636BK, MVCEH636WH, MVCEH636SS), cut-out 33 1/4" x 19 1/16".
  - For 48" Pureline Pro Ceiling Hood (MVCEH648BK, MVCEH648WH, MVCEH648SS), cut-out 45 1/16" x 19 1/16"
  - For the installation of the ceiling hood there is a cut-out opening to be made in the mounting plate. It is recommended to finish the cut-out opening watertight.
  - The ceiling hood should be mounted with the indicator LEDs on the right side of the user, so that the bottom panel opens away from you and the filter can be easily removed from the ceiling hood.



- ② The ceiling hood should be mounted with the display on the right side of the user, so that the bottom panel opens away from you and the grease filters can be easily removed from the ceiling hood. As standard, the exhaust opening of the motor is to the right.

Changing the exhaust direction of the motor (if desired).

Sideways:

- Open the bottom panel and remove the filters from the ceiling unit.
- Loosen the 4 screws located next to the protective grid.
- Turn the motor with the exhaust into the desired position and screw the motor back on using the 4 screws.



**Installation with exhaust opening to the RIGHT**



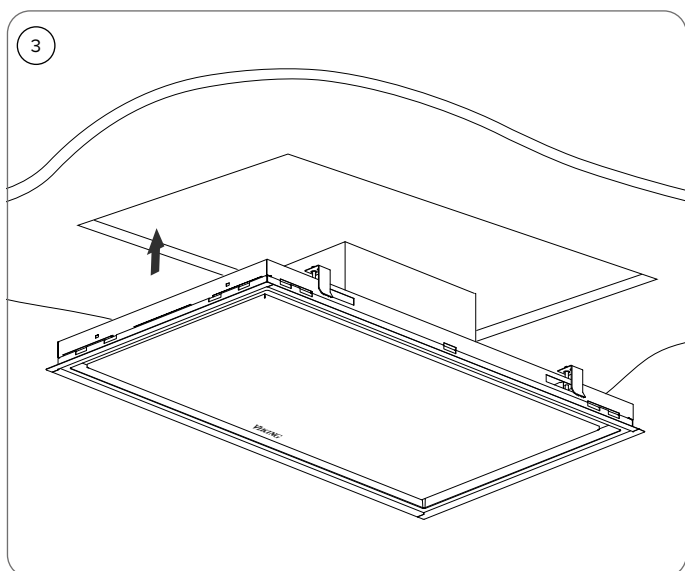
**Installation with exhaust opening LEFT/  
FRONT/REAR**



**Installation with exhaust opening UPWARDS**



**Dismantling the ceiling unit**



## Installation with exhaust opening to the RIGHT

- 3 Connect the exhaust duct on a connection nozzle of the motor using aluminum tape or a hose clamp.

If you use a fixed pipe, first place the supplied aluminum tape on the edge of the connection nozzle of the motor.



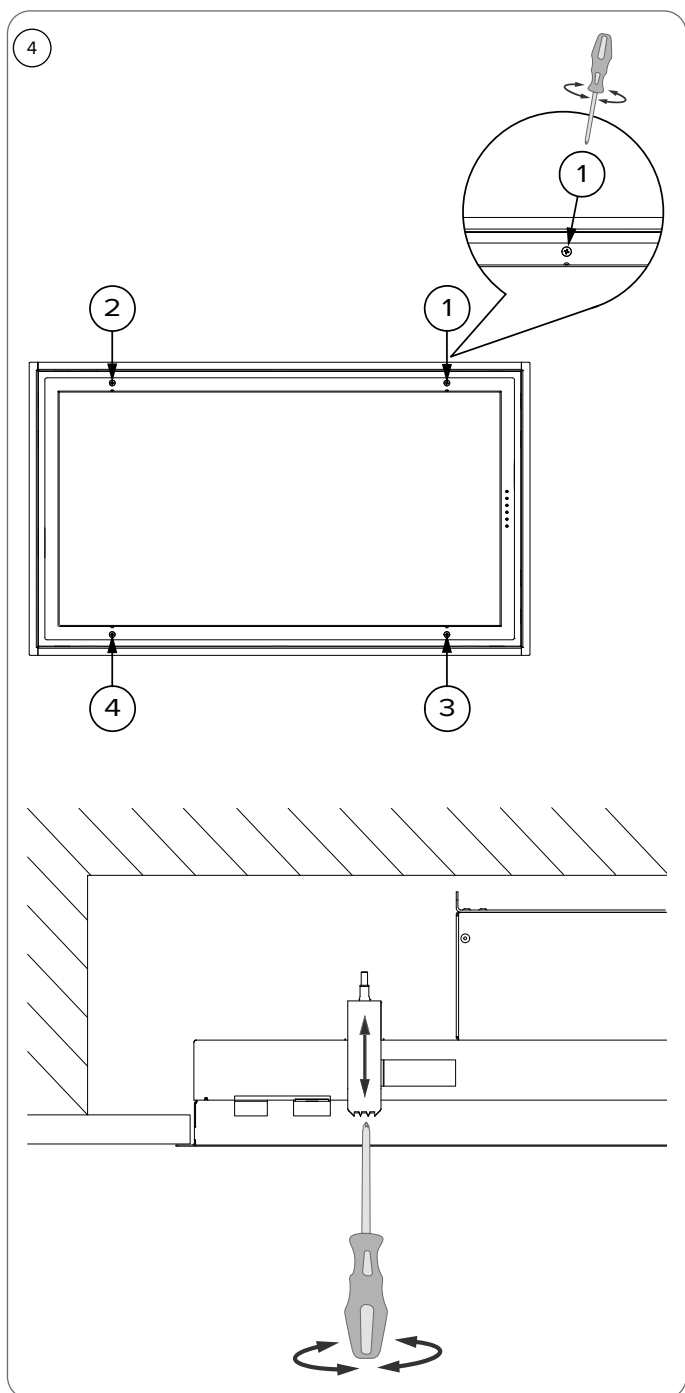
**Keep the exhaust duct long enough so that it can be reconnected after disassembly.**

- Put the plug into the wall socket.
- Push the ceiling unit up in the cut-out opening by pushing on the edges until you hear a firm click.

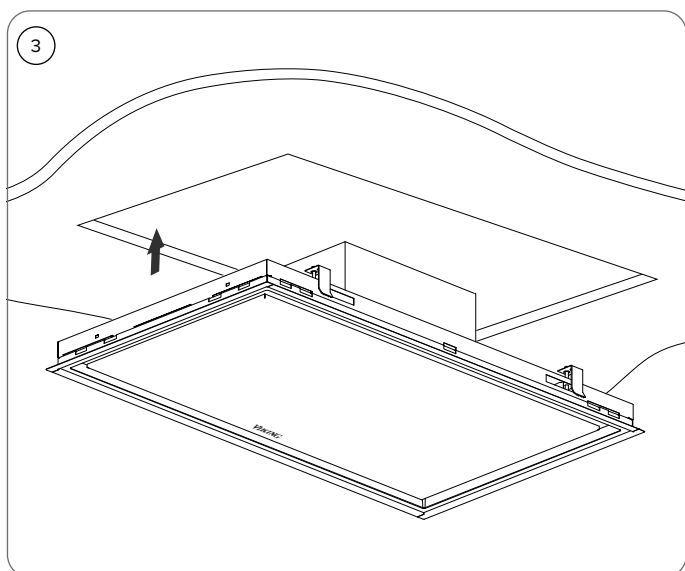


**Do not push on the bottom panel!**

- The ceiling unit will now remain suspended in place.



- 4 Tighten the 4 clamping screws by hand to secure the ceiling unit permanently **(CAUTION! Do not over-tighten in drywall)**. Once the clamping screws are tightened, the ceiling unit is ready for use.



## Installation with exhaust opening to the left/front/rear

- 3
  - Open the bottom panel and remove the grease filters.
  - Loosen the screws located next to the protective grid. The motor unit is now disconnected from the ceiling hood.
  - Turn the motor unit until the exhaust opening is to the left and screw the motor unit back on with the screws.
  - Place the grease filters in the ceiling hood and close the bottom panel.

Connect the exhaust duct on a connection nozzle of the motor using aluminum tape or a hose clamp.

If you use a fixed pipe, first place the supplied aluminum tape on the edge of the connection nozzle of the motor.



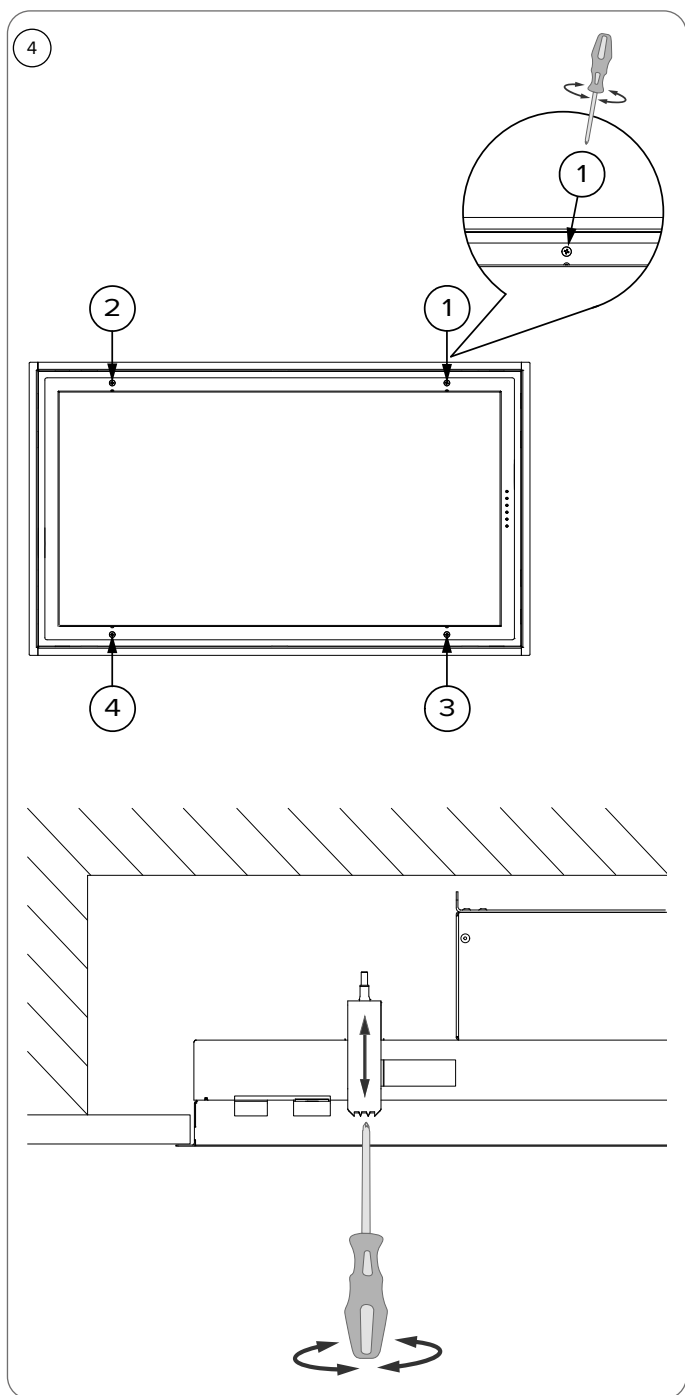
**Keep the exhaust duct long enough so that it can be reconnected after disassembly.**

- Put the plug into the wall socket.
- Push the built-in unit up into the build-in opening by pushing on the edges until you hear a firm click.

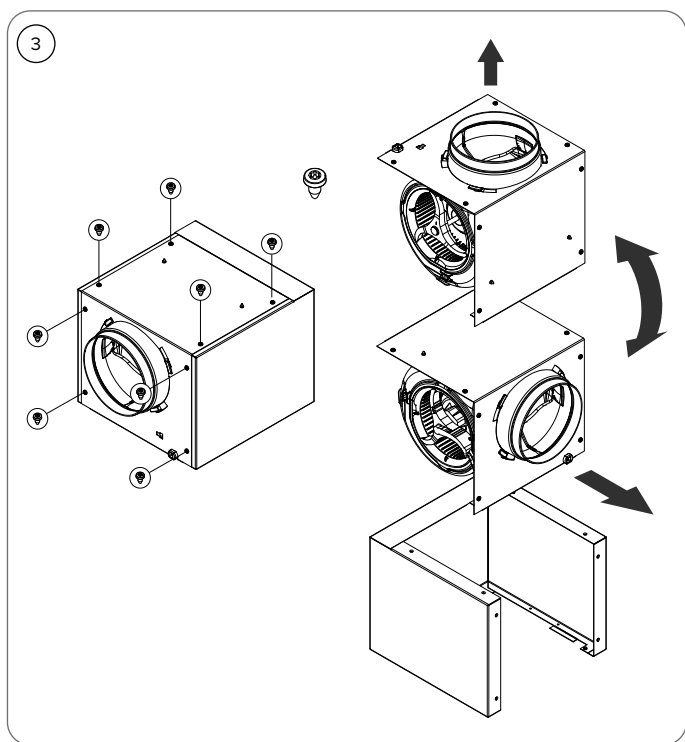


**Do not push on the bottom panel!**

- The ceiling unit will now remain suspended in place.



- ④ Tighten the 4 clamping screws by hand to secure the ceiling unit permanently **(CAUTION! Do not over-tighten in drywall)**. As soon as these clamping screws are tightened, the ceiling unit is ready for use.



## Installation with exhaust opening UPWARDS

- 3
- Loosen the screws on the motor cover (8x).
  - Turn the motor cover a quarter turn and place the motor cover back in the motor housing. Screw it back on again using the 8 screws.

Connect the exhaust duct on a connection nozzle of the motor using aluminum tape or a hose clamp.

If you use a fixed pipe, first place the supplied aluminum tape on the edge of the connection nozzle of the motor.



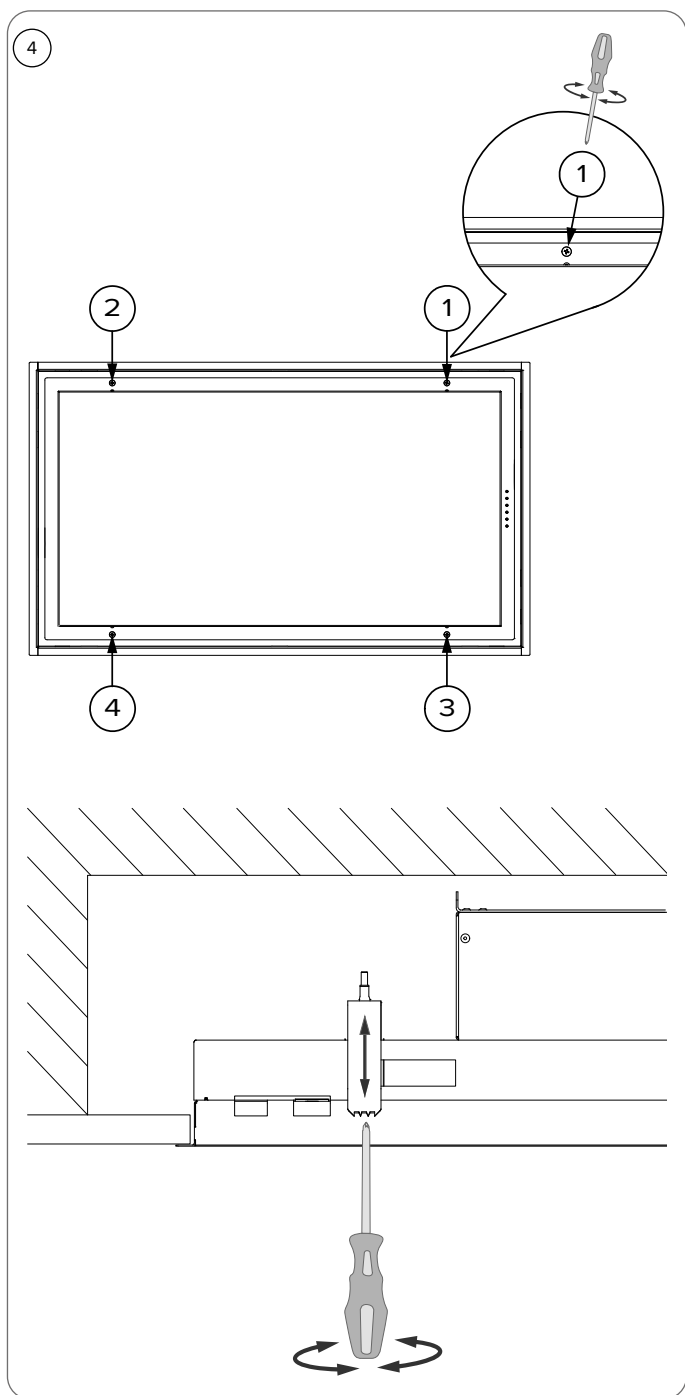
**Keep the exhaust duct long enough so that it can be reconnected after disassembly.**

- Put the plug into the wall socket.
- Push the built-in unit up into the build-in opening by pushing on the edges until you hear a firm click.

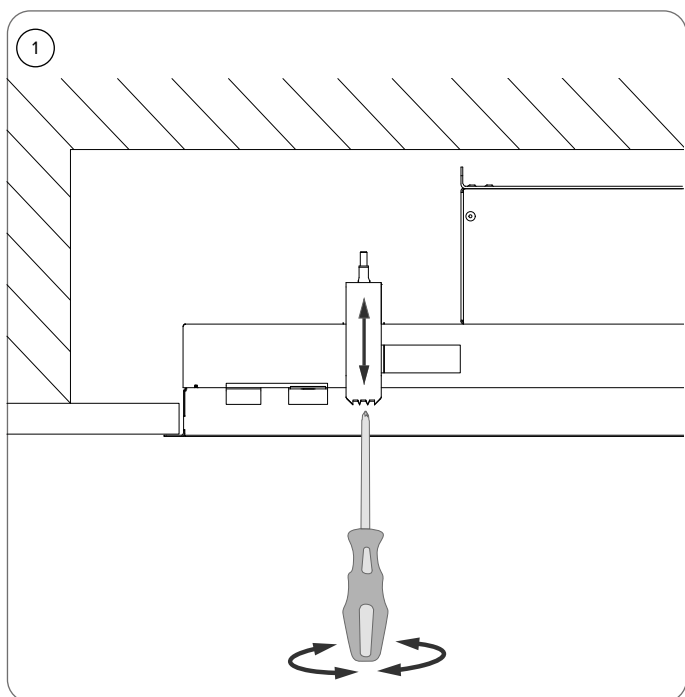


**Do not push on the bottom panel!**

- The ceiling unit will now remain suspended in place.



- ④ Tighten the 4 clamping screws by hand to secure the ceiling unit permanently **(CAUTION! Do not over-tighten in drywall)**. As soon as these clamping screws are tightened, the ceiling unit is ready for use.



## Dismantling the ceiling unit

- 1 Before dismantling, protect the hob with, for example, cardboard or a cloth in case a screw or clamp falls down.



**Perform the following actions only when the power is off at the wall socket.**

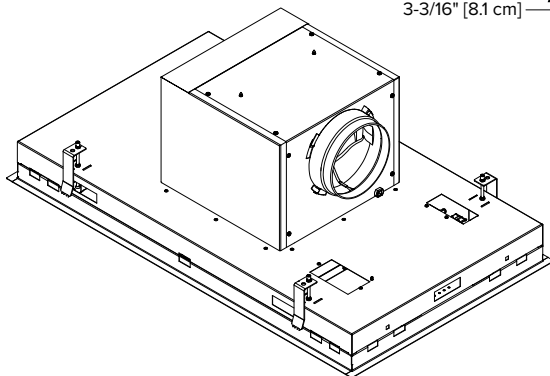
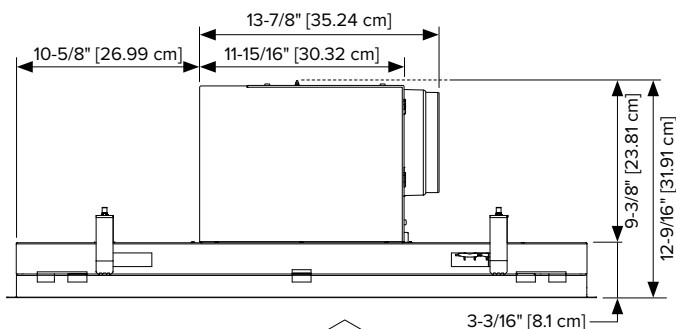
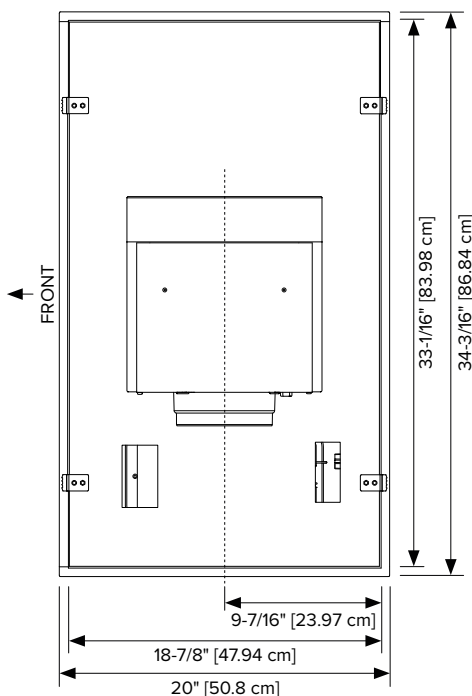
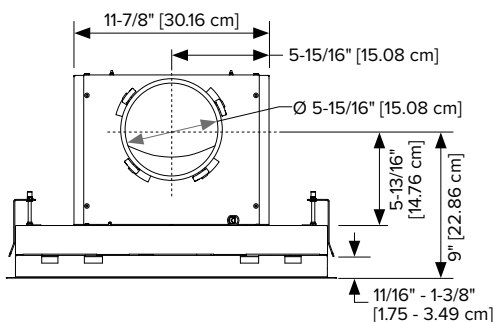
To remove the ceiling unit, the 4 clamping screws have to be fully loosened. Once these are unscrewed, the ceiling unit will come down.



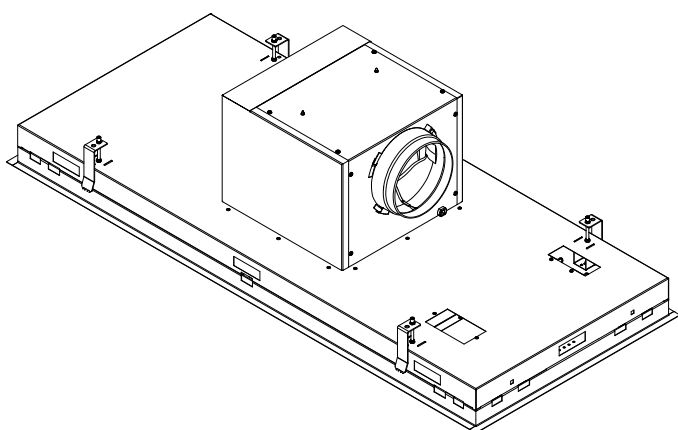
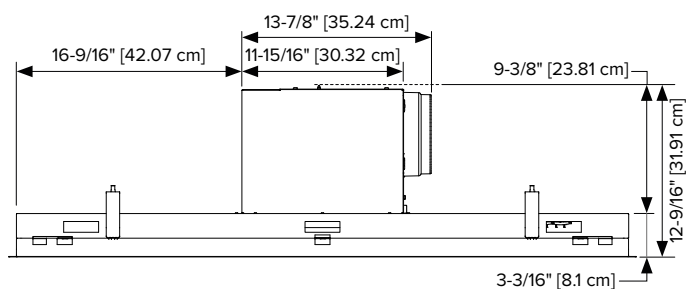
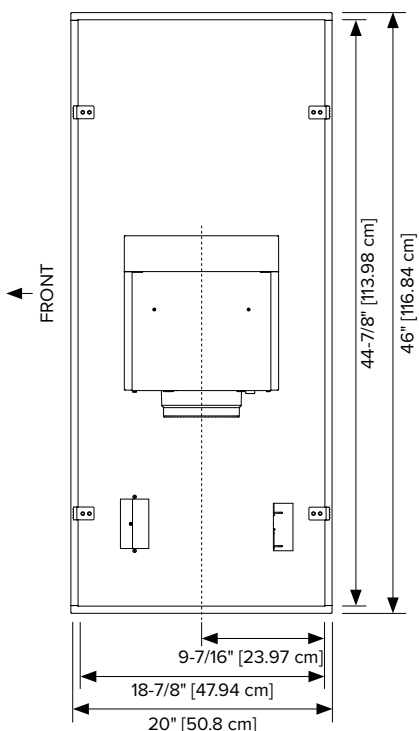
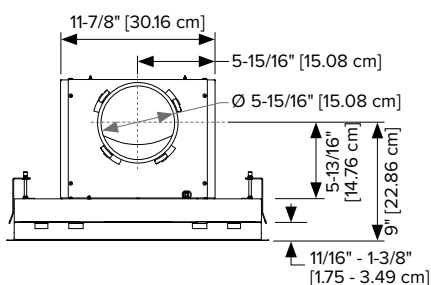
**Please note that the unscrewed clamping springs can fall down.**

## DIMENSIONS

### 36" Pureline Pro Ceiling Hood (MVCEH636BK, MVCEH636WH, MVCEH636SS)



## 48" Pureline Pro Ceiling Hood (MVCEH648BK, MVCEH648WH, MVCEH648SS)



## SERVICE INFORMATION

Only authorized replacement parts may be used in performing service on the appliance.

**DO NOT** repair or replace any part of the appliance unless specifically recommended in the manual. All other servicing should be referred to a qualified technician.

Contact Viking Range, LLC, 1-888-(845-4641), for the nearest service parts distributor in your area or write to:

**Viking Range, LLC  
PREFERRED SERVICE  
111 Front Street  
Greenwood, Mississippi 38930 USA**

Make a note of the information below. You'll need it if service is ever required. This information can be found on a sticker on the inner frame of the extractor hood. This becomes visible as soon as you take the filter(s) out of the extractor hood.

- Model no.
- Serial no.
- Date of purchase
- Date installed
- Dealer's name
- Address

If service requires installation of parts, use only authorized parts to insure protection under the warranty.

**These installation instructions should remain with the unit for future reference.**

Viking Range, LLC  
111 Front Street  
Greenwood, Mississippi 38930 USA  
(662) 455-1200

For product information, call 1-888-845-4641 or visit our website at [vikingrange.com](http://vikingrange.com)