

ASSEMBLY INSTRUCTIONS

ITEM NO : T3562-20


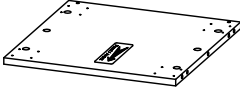
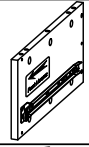
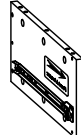

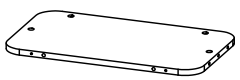


COLLECTION : ROWAN ONE DRAWER END
TABLE / BEDSIDE TABLE

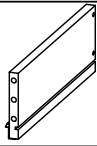
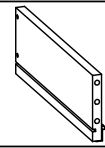

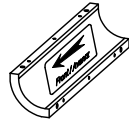
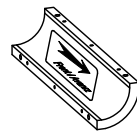
Thank you for purchasing this quality product. Be sure to check all packing materials carefully for small parts, which may have come loose inside the carton during shipment. Identify and count all items and compare with the PARTS LIST and/or HARDWARE LIST shown below.



Please read the instructions thoroughly before assembly.

1. We recommend that you assemble this product with the assistance of another person; this will make the assembly easier, and will help eliminate damage to the product or injury to persons during assembly.
2. Please do not tighten screws or bolts until the assembly is completed.
3. To level the chairs or table, before tightening all the screws, the chairs or table must be placed on a flat surface and then tighten the screws.
4. Please put all parts on a non-abrasive floor before assembly and follow the assembly steps to assemble your newly purchased product correctly and efficiently.

PARTS LIST			
NO.	DESCRIPTION	SKETCH	QTY
1	TOP PANEL		1 PC
2	BOTTOM PANEL		1 PC
3	SIDE PANEL - L		1 PC
4	SIDE PANEL - R		1 PC
5	MIDDLE SUPPORT		2 PCS
6	BACK PANEL		1 PC
7	DRAWER FRONT		1 PC
8	DRAWER BACK		1 PC

PARTS LIST			
NO.	DESCRIPTION	SKETCH	QTY
9	DRAWER SIDE - L		1 PC
10	DRAWER SIDE - R		1 PC
11	DRAWER BOTTOM		1 PC
12	LEG CORNER - 1		2 PCS
13	LEG CORNER - 2		2 PCS

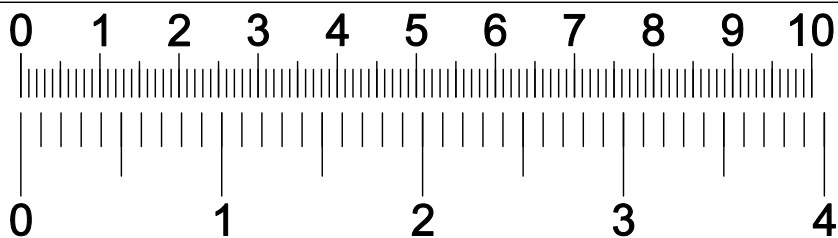
ASSEMBLY INSTRUCTIONS

ITEM NO : T3562-20

COLLECTION : ROWAN ONE DRAWER END
TABLE / BEDSIDE TABLE

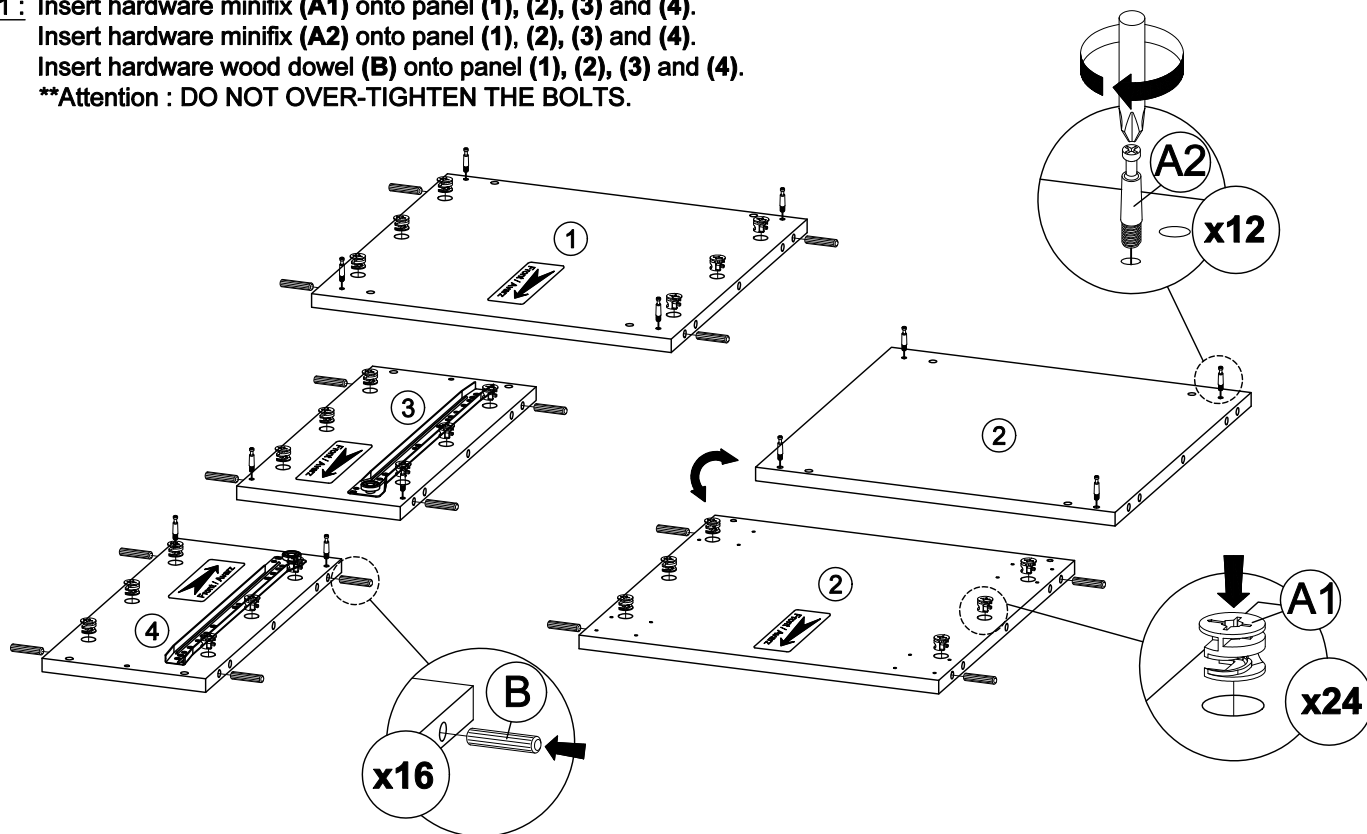
HARDWARE LIST

NO.	DESCRIPTION	SKETCH	QTY
A1	MINIFIX CAM Ø9/16 " x 1/2"		38 PCS
A2	MINIFIX BOLT M6 x 1-1/4"		38 PCS
A3	MINI FIX CAP Ø11/16" x 3/16 "		38 PCS
B	WOOD DOWEL M8 x 1-3/16"		32 PCS
C	CSK C/W SCREW M6 x 2"		2 PCS
D	ALLEN KEY M4 x 2-3/4"		1 PC
E	C.B SCREW M3.5 x 5/8"		16 PCS
F	C.B SCREW M4 x 1-1/2"		4 PCS
G	PVC HANDLE 911-128		1 PC
H	C.B SCREW M4 x 1"		2 PCS
I	METAL LEG		4 PCS



HARDWARE DIMENSIONS VERIFICATION TOOL

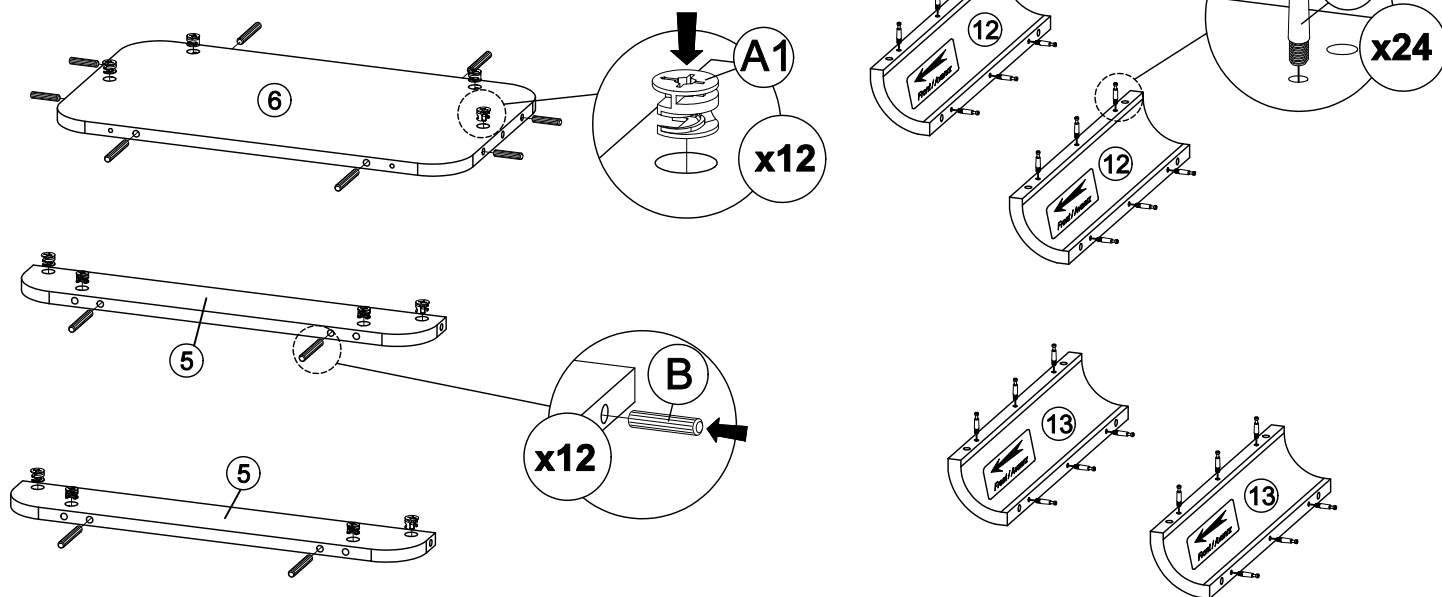
STEP 1 : Insert hardware minifix (A1) onto panel (1), (2), (3) and (4).
Insert hardware minifix (A2) onto panel (1), (2), (3) and (4).
Insert hardware wood dowel (B) onto panel (1), (2), (3) and (4).
**Attention : DO NOT OVER-TIGHTEN THE BOLTS.



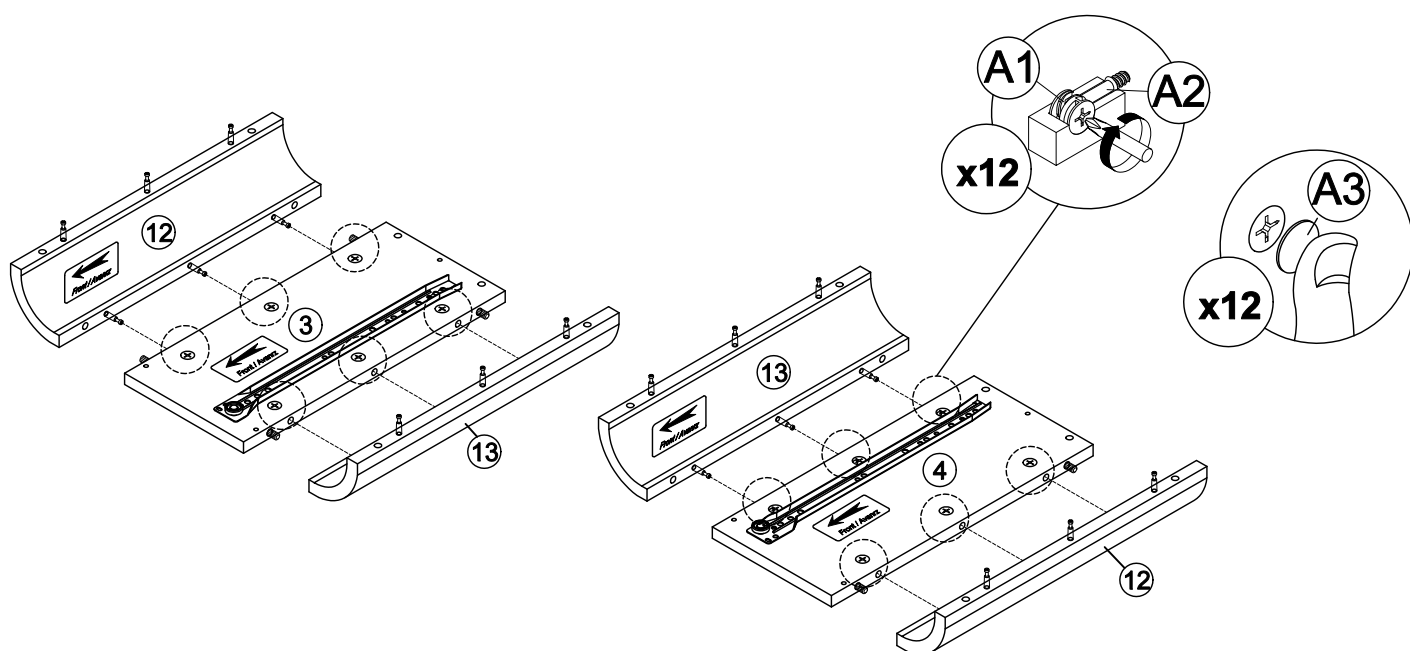
ASSEMBLY INSTRUCTIONS

ITEM NO : T3562-20
COLLECTION : ROWAN ONE DRAWER END TABLE / BEDSIDE TABLE

STEP 2 : Insert hardware minifix (A1) onto panel (5) and (6).
Insert hardware minifix (A2) onto panel (12) and (13).
Insert hardware wood dowel (B) onto panel (5) and (6).
**Attention : DO NOT OVER-TIGHTEN THE BOLTS.



STEP 3 : Attach panel (12) and (13) to panel (3) and (4).
Insert all hardware minifix (A2) into minifix (A1).
Rotate all minifix (A1) until tight. Apply minifix (A3) onto all minifix (A1).
**Attention : DO NOT OVER-TIGHTEN THE BOLTS.



ASSEMBLY INSTRUCTIONS

ITEM NO : T3562-20

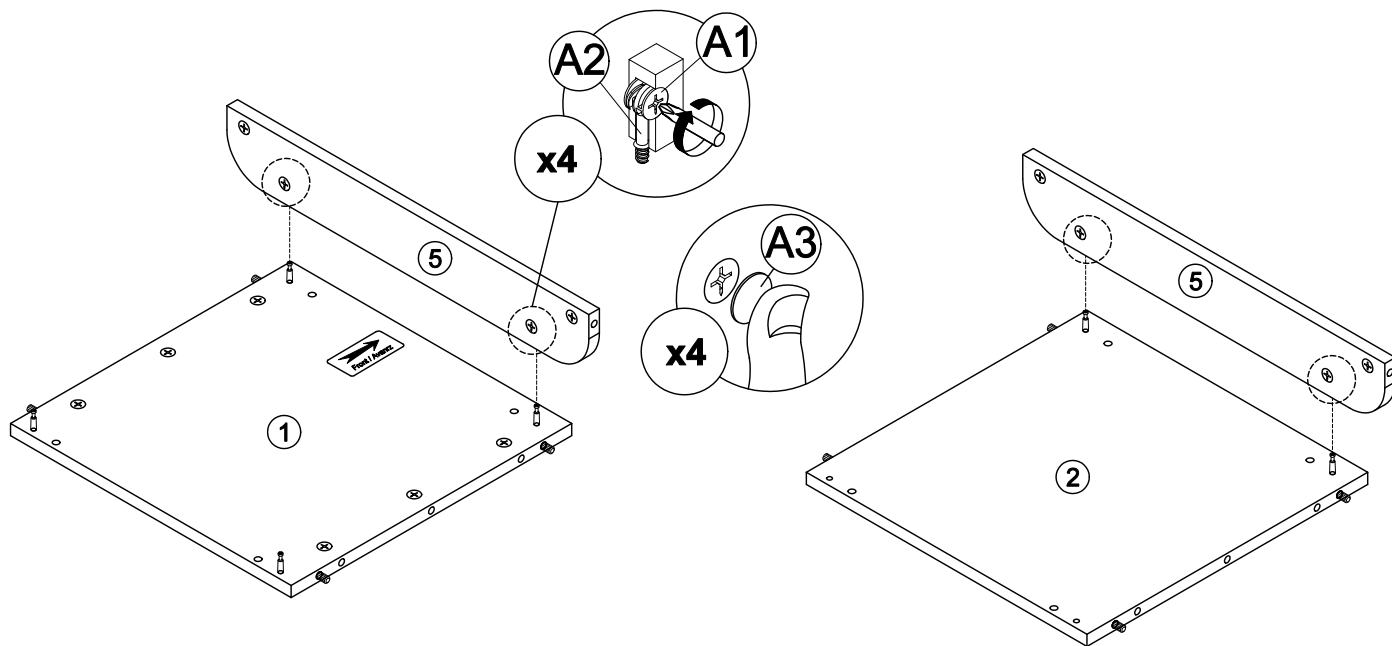
COLLECTION : ROWAN ONE DRAWER END
TABLE / BEDSIDE TABLE

STEP 4 : Attach panel (5) to panel (1) and (2).

Insert all hardware minifix (A2) into minifix (A1).

Rotate all minifix (A1) until tight. Apply minifix (A3) onto all minifix (A1).

****Attention : DO NOT OVER-TIGHTEN THE BOLTS.**

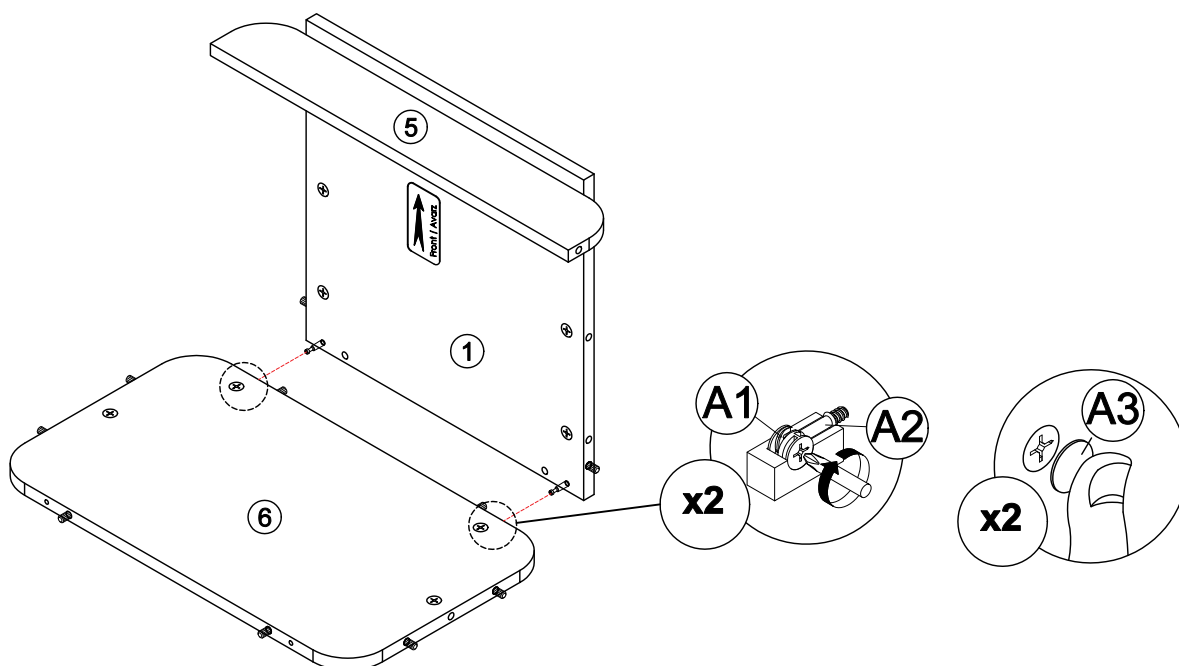


STEP 5 : Attach panel (6) to panel (1).

Insert all hardware minifix (A2) into minifix (A1).

Rotate all minifix (A1) until tight. Apply minifix (A3) onto all minifix (A1).

****Attention : DO NOT OVER-TIGHTEN THE BOLTS.**



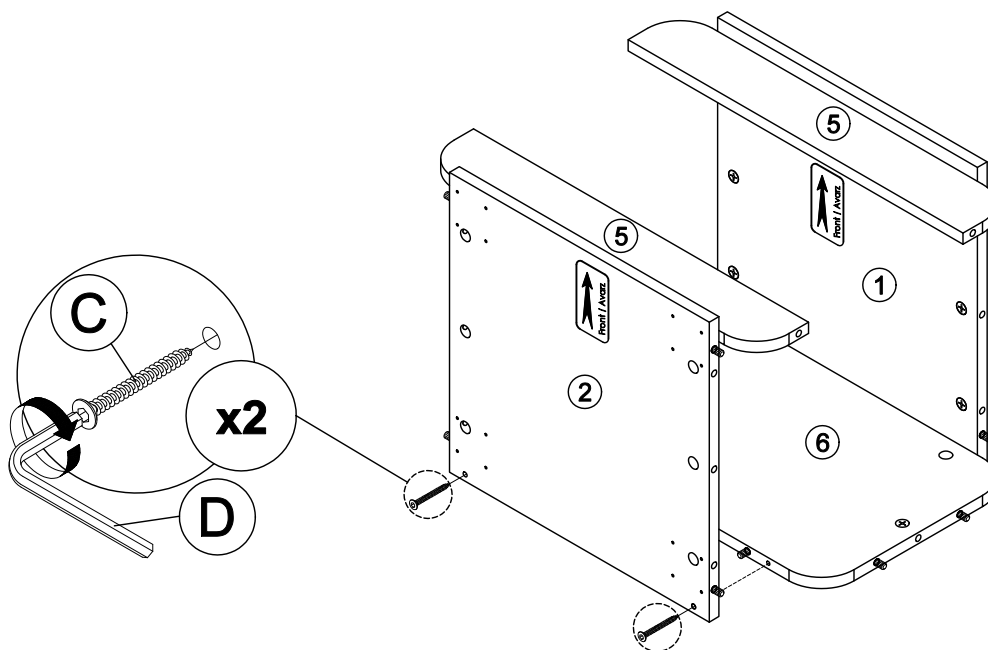
ASSEMBLY INSTRUCTIONS

ITEM NO : T3562-20

COLLECTION : ROWAN ONE DRAWER END
TABLE / BEDSIDE TABLE

STEP 6 : Connect panel (2) to panel (6) by using hardware (C) and (D).

****Attention :** DO NOT OVER-TIGHTEN THE BOLTS.

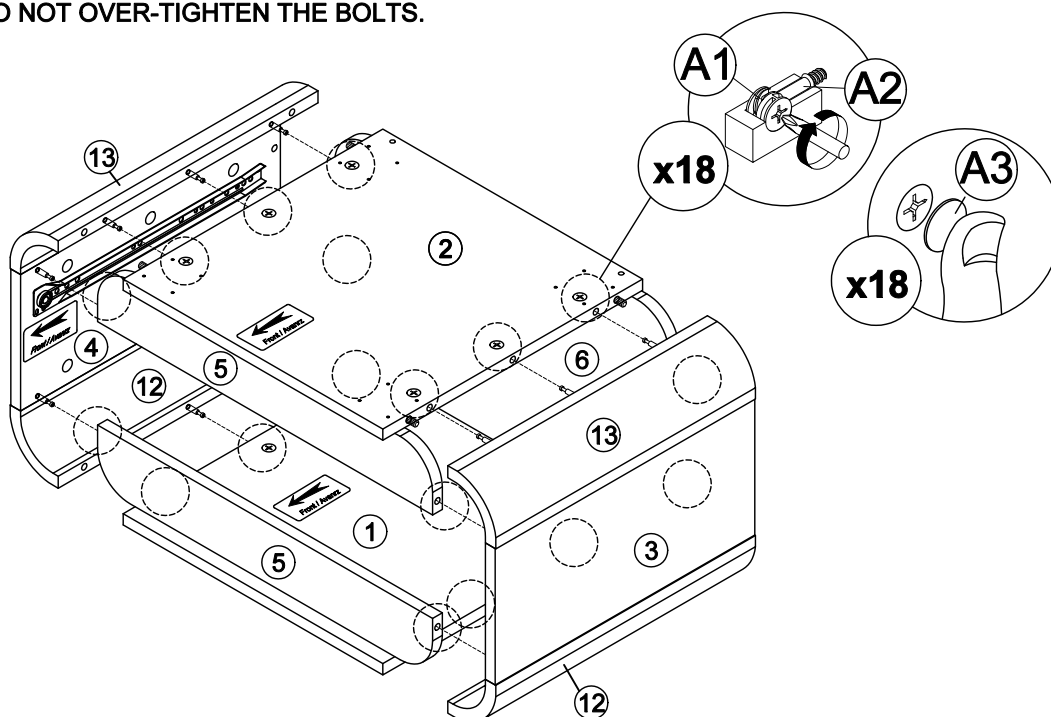


STEP 7 : Attach panel (3), (4), (12) and (13) to panel (1), (2), (5) and (6).

Insert all hardware minifix (A2) into minifix (A1).

Rotate all minifix (A1) until tight. Apply minifix (A3) onto all minifix (A1).

****Attention :** DO NOT OVER-TIGHTEN THE BOLTS.

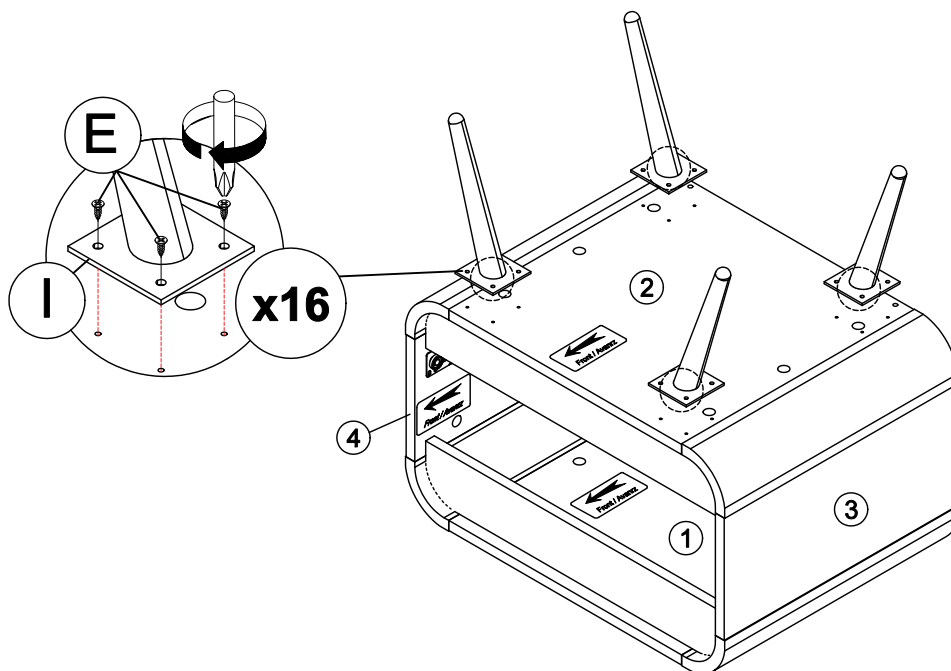


ASSEMBLY INSTRUCTIONS

ITEM NO : T3562-20
COLLECTION : ROWAN ONE DRAWER END TABLE / BEDSIDE TABLE

STEP 8 : Fix hardware (I) onto panel (2) by using hardware screw (E).

****Attention :** DO NOT OVER-TIGHTEN THE BOLTS.

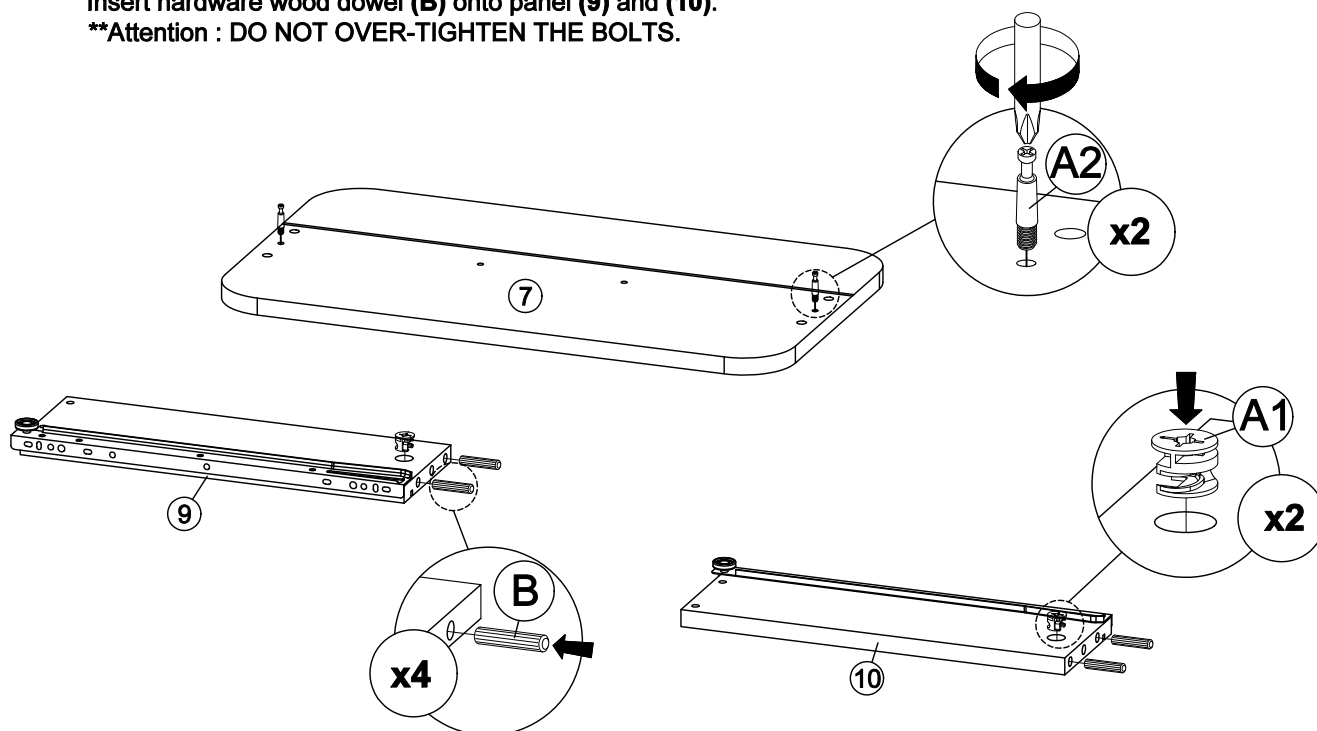


STEP 9 : Insert hardware minifix (A1) onto panel (9) and (10).

Insert hardware minifix (A2) onto panel (7).

Insert hardware wood dowel (B) onto panel (9) and (10).

****Attention :** DO NOT OVER-TIGHTEN THE BOLTS.



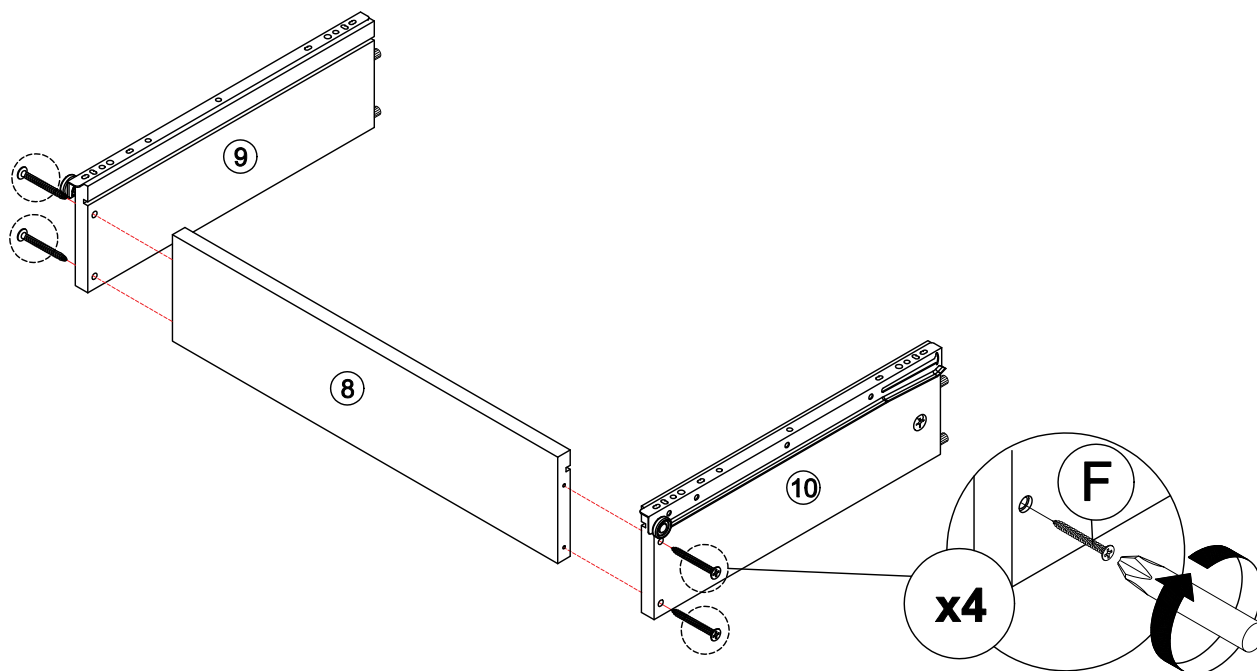
ASSEMBLY INSTRUCTIONS

ITEM NO : T3562-20

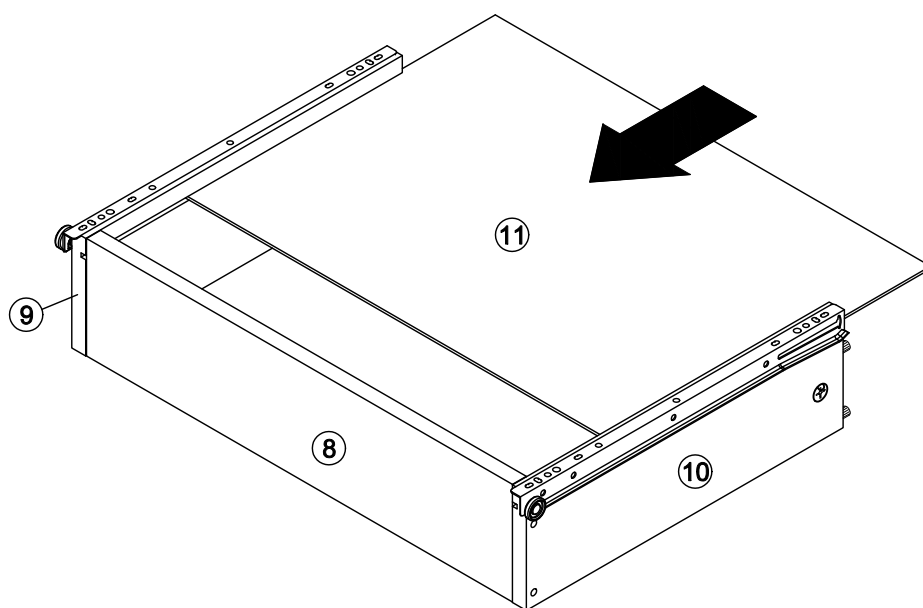
COLLECTION : ROWAN ONE DRAWER END
TABLE / BEDSIDE TABLE

STEP 10 : Assembly panel (9) and (10) to panel (8) by using hardware screws (F).

****Attention :** DO NOT OVER-TIGHTEN THE SCREWS.



STEP 11 : Insert panel (11) along the slot.



ASSEMBLY INSTRUCTIONS

ITEM NO : T3562-20

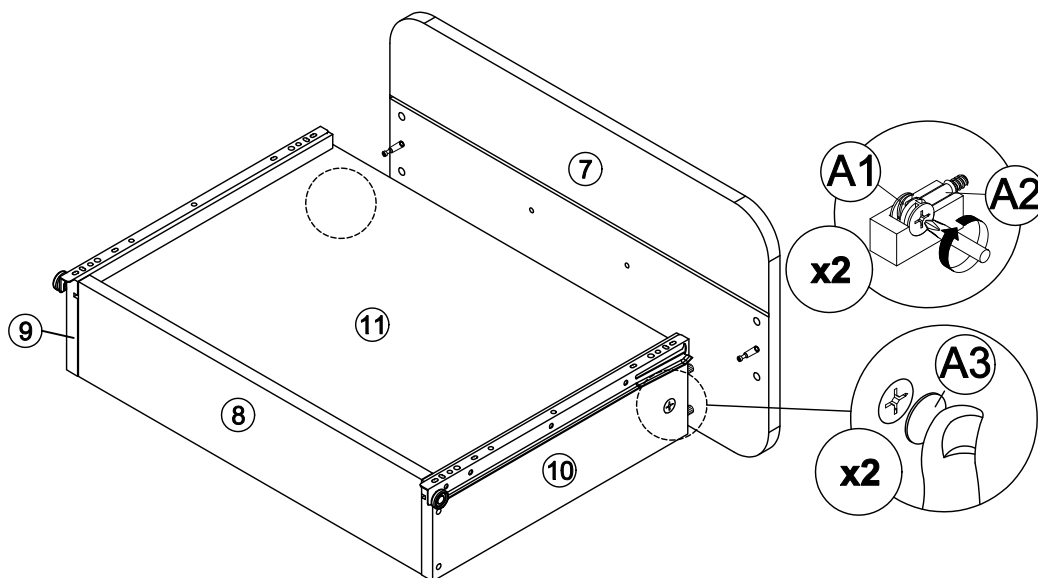
COLLECTION : ROWAN ONE DRAWER END
TABLE / BEDSIDE TABLE

STEP 12 : Attach panel (7) to panel (9) and (10).

Insert all hardware minifix (A2) into minifix (A1).

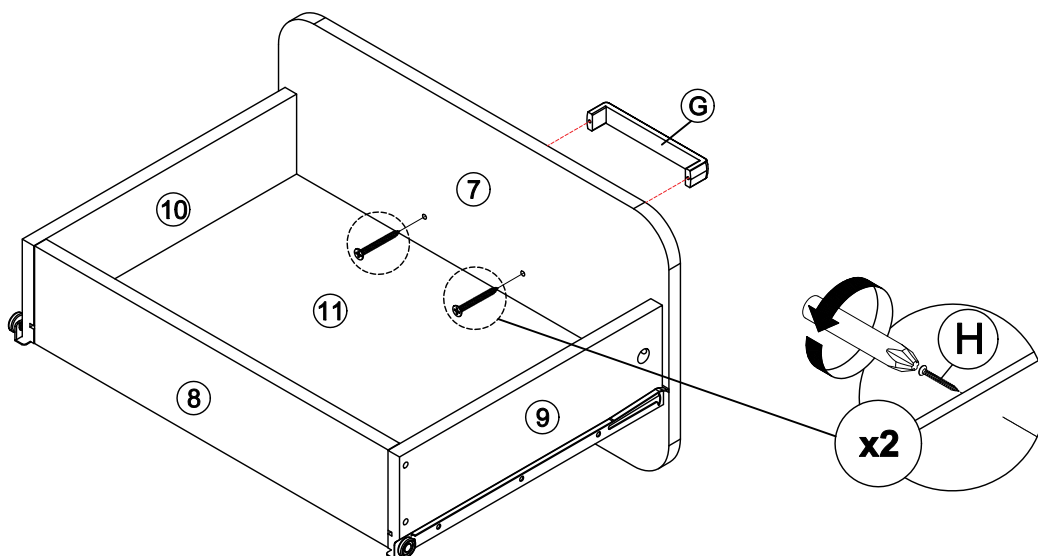
Rotate all minifix (A1) until tight. Apply minifix (A3) onto all minifix (A1).

****Attention :** DO NOT OVER-TIGHTEN THE BOLTS.



STEP 13 : Fix hardware (G) onto panel (7) by using hardware (H).

****Attention :** DO NOT OVER-TIGHTEN THE BOLTS.

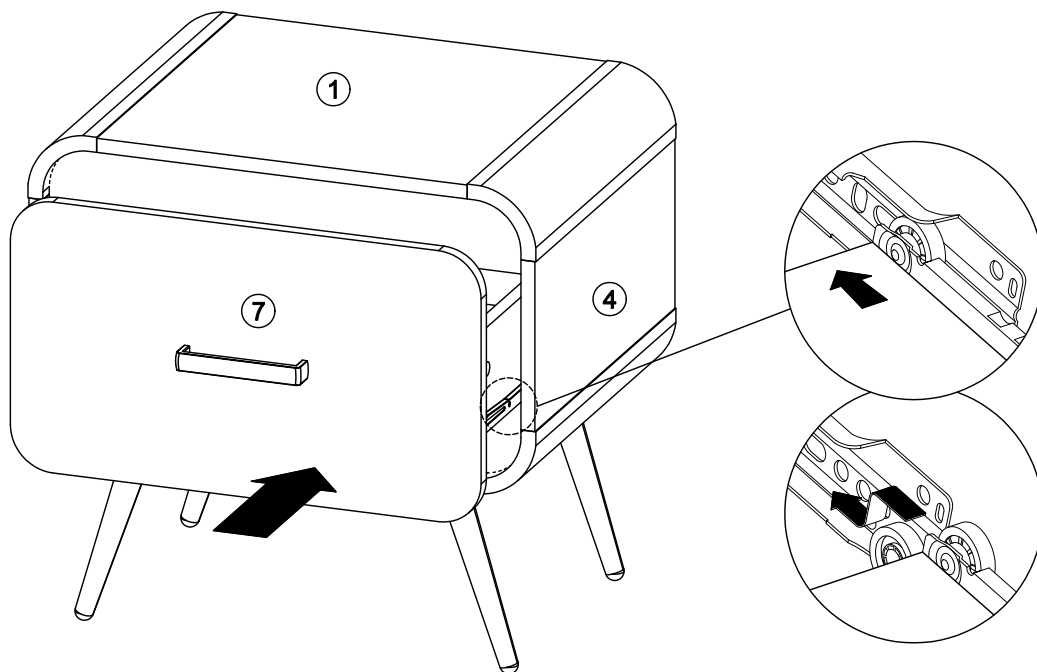


ASSEMBLY INSTRUCTIONS

ITEM NO : T3562-20

COLLECTION : ROWAN ONE DRAWER END
TABLE / BEDSIDE TABLE

STEP 14 : Put all the drawer in place along the drawer slides.



ASSEMBLY COMPLETED

