

SAMSUNG

LED TV

user manual

SERIES 5000

Figures and Illustrations in this User Manual are provided for reference only and may differ from actual product appearance. Product design and specifications may be changed without notice.

### Important Warranty Information Regarding Television Format Viewing

Wide screen format LED Displays with aspect ratios of 16:9 (the ratio of the screen width to screen height) are primarily designed to display wide screen format full-motion video. The images displayed on them should primarily be in the wide screen 16:9 ratio format, or expanded to fill the screen if your model offers this feature and the images are constantly moving. Displaying stationary graphics and images on screen, such as the dark sidebars on non-expanded standard format television video and programming, should be limited to no more than 5% of the total television viewing per week. Additionally, viewing other stationary images and text such as stock market crawls, video game displays, station logos, web sites or computer graphics and patterns, should be limited as described above for all televisions. Displaying stationary images that exceed the above guidelines can cause uneven aging of LED Displays that leave subtle, but permanent burned-in ghost images in the LED picture. To avoid this, vary the programming and images, and primarily display full screen moving images, not stationary patterns or dark bars. On LED models that offer picture sizing features, use these controls to view different formats as a full screen picture. Be careful in the selection and duration of television formats you use for viewing. Uneven LED aging as a result of format selection and use, as well as burned-in images, are not covered by your Samsung limited warranty.

### Still image warning

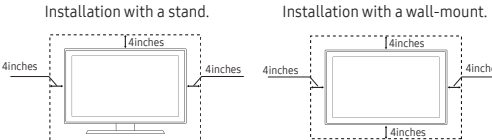
Avoid displaying still images (such as jpeg picture files) or still image elements (such as TV channel logos, panorama or 4:3 image format, stock or news bars at screen bottom etc.) on the screen. Constant displaying of still pictures can cause ghosting of LED screen, which will affect image quality. To reduce risk of this effect, please follow below recommendations:

- Always displaying the same TV channel for long periods.
- Always try to display any image on full screen, use TV set picture format menu for best possible match.
- Reduce brightness and contrast values to minimum required to achieve desired picture quality, exceeded values may speed up the burnout process.
- Frequently use all TV features designed to reduce image retention and screen burnout, refer to proper user manual section for details.

### Securing the Installation Space

Keep the required distances between the product and other objects (e.g. walls) to ensure proper ventilation. Failing to do so may result in fire or a problem with the product due to an increase in the internal temperature of the product.

- When using a stand or wall-mount, use parts provided by Samsung Electronics only.
- If you use parts provided by another manufacturer, it may result in a problem with the product or an injury due to the product falling.
- The appearance may differ depending on the product.
- Be careful when you contact the TV because some parts can be somewhat hot.



Contact SAMSUNG WORLD WIDE		
If you have any questions or comments relating to Samsung products, please contact the SAMSUNG customer care center.		
Country	CANADA	U.S.A
Address	Samsung Electronics Canada Inc. 2050 Derby Road West Mississauga, Ontario L5N 0B9 Canada	Samsung Electronics America, Inc. 85 Challenger Road Ridgefield Park, NJ 07660
Customer Care Center	1-800-SAMSUNG (726-7864)	
Web Site	www.samsung.com/ca/support (English) www.samsung.com/ca/fr/support (French)	www.samsung.com/us/support

© 2016 Samsung Electronics Co., Ltd. All rights reserved.

### Important Safety Instructions

## Warning! Important Safety Instructions

(Please read the Safety Instructions before using your TV.)

CAUTION	
RISK OF ELECTRIC SHOCK. DO NOT OPEN.	
	This symbol indicates that high voltage is present inside. It is dangerous to make any kind of contact with any internal part of this product.
	This symbol indicates that this product has included important literature concerning operation and maintenance.

	Class II product: This symbol indicates that a safety connection to electrical earth (ground) is not required.
	AC voltage: Rated voltage marked with this symbol is AC voltage.
	DC voltage: Rated voltage marked with this symbol is DC voltage.
	Caution. Consult instructions for use: This symbol instructs the user to consult the user manual for further safety related information.

- The slots and openings in the cabinet and in the back or bottom are provided for necessary ventilation. To ensure reliable operation of this apparatus and to protect it from overheating, these slots and openings must never be blocked or covered.
  - Do not place this apparatus in a confined space, such as a bookcase or built-in cabinet, unless proper ventilation is provided.
  - Do not place this apparatus near or over a radiator or heat register, or where it is exposed to direct sunlight.
  - Do not place vessels (vases etc.) containing water on this apparatus, as this can result in a fire or electric shock.
- Do not expose this apparatus to rain or place it near water (near a bathtub, washbowl, kitchen sink, or laundry tub, in a wet basement, or near a swimming pool, etc.). If this apparatus accidentally gets wet, unplug it and contact an authorized dealer immediately.
- This apparatus uses batteries. In your community, there might be environmental regulations that require you to dispose of these batteries properly. Please contact your local authorities for disposal or recycling information.
- Do not overload wall outlets, extension cords, or adaptors beyond their capacity, since this can result in fire or electric shock.
- Power-supply cords should be placed so that they are not likely to be walked on or pinched by items placed upon or against them. Pay particular attention to cords at the plug end, at wall outlets, and at the point where they exit from the appliance.
- To protect this apparatus from a lightning storm, or when left unattended and unused for long periods of time, unplug it from the wall outlet and disconnect the antenna or cable system. This will prevent damage to the set due to lightning and power line surges.
- Before connecting the AC power cord to the DC adaptor outlet, make sure that the voltage designation of the DC adaptor corresponds to the local electrical supply.
- Never insert anything metallic into the open parts of this apparatus. This may cause a danger of electric shock.
- To avoid electric shock, never touch the inside of this apparatus. Only a qualified technician should open this apparatus.
- Be sure to plug in the power cord until it is firmly seated. When unplugging the power cord from a wall outlet, always pull on the power cord's plug. Never unplug it by pulling on the power cord. Do not touch the power cord with wet hands.
- If this apparatus does not operate normally - in particular, if there are any unusual sounds or smells coming from it - unplug it immediately and contact an authorized dealer or service center.
- Be sure to pull the power plug out of the outlet if the TV is to remain unused or if you are to leave the house for an extended period of time (especially when children, elderly, or disabled people will be left alone in the house).
  - Accumulated dust can cause an electric shock, an electric leakage, or a fire by causing the power cord to generate sparks and heat or by causing the insulation to deteriorate.
- Be sure to contact an authorized Samsung service center for information if you intend to install your TV in a location with heavy dust, high or low temperatures, higher humidity, chemical substances, or where it will operate 24 hours a day such as in an airport, a train station, etc. Failure to do so may lead to serious damage to your TV.
- Use only a properly grounded plug and wall outlet.
  - An improper ground may cause electric shock or equipment damage. (Class I Equipment only.)
- To turn off this apparatus completely, disconnect it from the wall outlet. To ensure you can unplug this apparatus quickly if necessary, make sure that the wall outlet and power plug are readily accessible.
- Store the accessories (batteries, etc.) in a location safely out of the reach of children.
- Do not drop or strike the product. If the product is damaged, disconnect the power cord and contact a Samsung service center.
- To clean this apparatus, unplug the power cord from the wall outlet and wipe the product with a soft, dry cloth. Do not use any chemicals such as wax, benzene, alcohol, thinners, insecticide, air fresheners, lubricants, or detergents. These chemicals can damage the appearance of the TV or erase the printing on the product.
- Do not expose this apparatus to dripping or splashing.
- Do not dispose of batteries in a fire.
- Do not short-circuit, disassemble, or overheat the batteries.
- There is danger of an explosion if you replace the batteries used in the remote with the wrong type of battery. Replace only with the same or equivalent type.

WARNING - TO PREVENT THE SPREAD OF FIRE, KEEP CANDLES AND OTHER ITEMS WITH OPEN FLAMES AWAY FROM THIS PRODUCT AT ALL TIMES.

- Use care when touching the TV after it has been on for some time. Some parts can be warm to the touch.

### The On Screen Menus

Your TV has two kinds of menus, the Main menu and the various Tools menus. The Main menu gives access to most or all of the menu options available on your TV. The Tools menus display a selected number of frequently used menu options that change depending on the screen you are viewing. A Tools menu symbol (T) in the lower right side of the screen indicates that a Tools menu is available.

The Main menu has seven primary categories:

- Picture
  - Sound
  - Channel
  - Setup
- Input
  - Application
  - Support

To view the Main menu, press the MENU button on your remote. To view a Tools menu, press the TOOLS button on your remote.

The menu options that appear in the Main menu depend on the Source you have selected. For example, if you have selected the HDMI source, the Channel category will not appear. To see the Channel category, you must first select T in the Source List.

The Menu options are presented below, arranged by Menu category. A Tools button symbol (TOOLS) next to an option name indicates the option is also available in one of the Tools menus.

### Picture Mode

Select your preferred picture mode.

- When your TV is connected to a PC, you can only select Entertain and Standard.

- Dynamic:** Brightens the screen. Suitable for a bright room.
- Standard:** Suitable for normal room brightness.
- Movie:** Darkens the screen, making it less gray. Suitable for watching movies in a darkened room.
- Entertain:** Sharpens the picture. Suitable for games.
  - Only available when the TV is connected to a PC.

**Backlight / Contrast / Brightness / Sharpness / Color / Tint (G/R)**

- Backlight:** Adjusts the brightness of the screen by adjusting the brightness of the individual pixels.
- Contrast:** Increases or decreases the contrast between dark and light areas of the picture.
- Brightness:** Adjusts the brightness of the screen. Not as effective as Backlight.
- Sharpness:** Sharpens or blurs the edges of objects.
- Color:** Adjusts the color saturation. The higher the Color setting, the more intense the color. Low settings remove color and the picture becomes black, white, and gray.
- Tint (G/R):** Adjusts the amount of green and red in the picture. As you increase the amount of green, the amount of red decreases and vice versa.
- When the TV is connected to a PC, you can only make changes to Backlight, Contrast, Brightness, and Sharpness.

### Picture Options

When the TV is connected to a PC, you can only make changes to the Color Tone, Size, and HDMI Black Level.

- Color Tone (Cool / Standard / Warm):** Cool makes the picture bluer (cooler). Warm makes the picture redder (warmer).
- Warm is deactivated when the picture mode is set to Dynamic.

**Size:** Set the size and aspect ratio of the picture on the screen. Your cable box or satellite receiver may have its own set of screen sizes as well. However, we highly recommend you use the TV's 16:9 mode most of the time. 16:9: Sets the picture to the 16:9 wide screen format.

**Zoom:** Provides moderate magnification of the picture. Sides, top, and bottom are Zoomed. Provides larger magnification of the picture. Sides, top, and bottom are off. **Wide Fit:** Enlarges the aspect ratio of the picture so the picture fits the entire screen. 4:3: Sets the picture to the old, 4:3 format and puts black or gray borders on the right and left of the picture.

- Do not watch your TV in the 4:3 format for a long time. The borders displayed on the left, right, and center of the screen in 4:3 format may cause image retention (screen burn) which is not covered by the warranty.

**Screen Fit:** Displays the full image without any cut-off when your TV is inputting HDMI (720p / 1080i / 1080p) or Component (1080i / 1080p) HD signals.

**HD (High Definition):** has a 16:9 aspect ratio and 1080i/1080p (1920x1080) or 720p (1280x720) resolution.

You can adjust and store settings for each external device you have connected to an input on the TV. Picture Sizes available by Input Source are listed below:

**Custom:** Magnifies or shrinks 16:9 pictures vertically and/or horizontally. A magnified or shrunk picture can be moved left, right, up, and down.

Input Source	Picture Size
ATV, AV, Component (480i, 480p)	16:9, Zoom1, Zoom2, 4:3
DTV (1080i, 1080p), Component (1080i, 1080p), HDMI (720p, 1080i, 1080p)	16:9, Wide Fit, 4:3, Screen Fit

- Digital Clean View (Off / Low / Medium / High / Auto):** If the broadcast signal received by your TV is weak, you can activate the Digital Clean View feature to reduce any static and ghosting that may appear on the screen.
  - When the signal is weak, try all the Digital Clean View options until the TV displays the best picture.

- HDMI Black Level (Normal / Low):** For HDMI signals, select the black level to adjust the screen depth. Low make blacks look darker.
  - Available only in HDMI mode (RGB signals).

- Film Mode (Off / Auto1 / Auto2):** Sets the TV to automatically sense and process film signals from all sources and adjusts the picture for optimum quality.
  - Available in ATV, DTV (interface), AV, COMPONENT (480i / 1080i) and HDMI (480i / 1080i).

- Motion Lighting (Off / On):** When on, the TV automatically dims the screen's backlights when full brightness is not needed - for example when the TV is displaying dark scenes - to reduce power consumption. The backlights are returned to full brightness when the TV displays bright scenes.

### Picture Off

The screen is turned off but the sound remains on. Press any button except the power key or volume button to turn on the screen.

### Picture Reset

- Picture Reset (Reset Picture Mode/Cancel):** Resets the picture settings to their factory defaults.

### Sound Menu

- Mode:**
  - Standard: Selects the normal sound mode.
  - Music: Emphasizes music over voices.
  - Movie: Provides the best sound for movies.
  - Clear Voice: Emphasizes voices over other sounds.

**Equalizer**

- Available in Standard sound mode only.
- Balance L/R:** Adjusts the balance between the right and left speaker.
- 100Hz / 300Hz / 1kHz / 3kHz / 10kHz (Bandwidth Adjustment):** Adjusts the loudness of specific bandwidth frequencies.
- Reset:** Resets the equalizer to its default settings.

**Auto Volume**

Automatically adjusts the volume level when you change video sources or content so the level remains the same.

### Speaker Select

When you are listening to the sound track of a broadcast or movie through an external receiver, you may hear a sound echo caused by the difference in decoding speed between the TV's speakers and the speakers attached to your audio receiver. If this occurs, set the TV to External Speaker.

When you set **Speaker Select to External Speaker**, the TV's speakers are turned off. You will hear sound through the external speakers only. When you set **Speaker Select to TV Speaker** both the TV's speakers and the external speakers are on. You will hear sound through both.

- When **Speaker Select** is set to **External Speaker**, the VOLUME and MUTE buttons will not operate and the sound settings will be limited.
- If there is no video signal, both the TV's speakers and the external speakers will be mute.

### Getting Started

#### Accessories

- Remote Control & Batteries (AAA x 2)
- Warranty Card / Regulatory Guide
- Owner's Instructions
- Power Cord
- Cable Guide

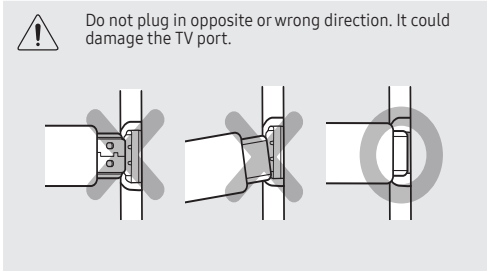
#### Input Cables (Sold Separately)

- Audio
- Composite (AV)
- Component
- Coaxial (RF)
- HDMI
- HDMI-DVI

Make sure you have the correct cable before plugging it in. Illustrations of common plugs and jacks are shown below.

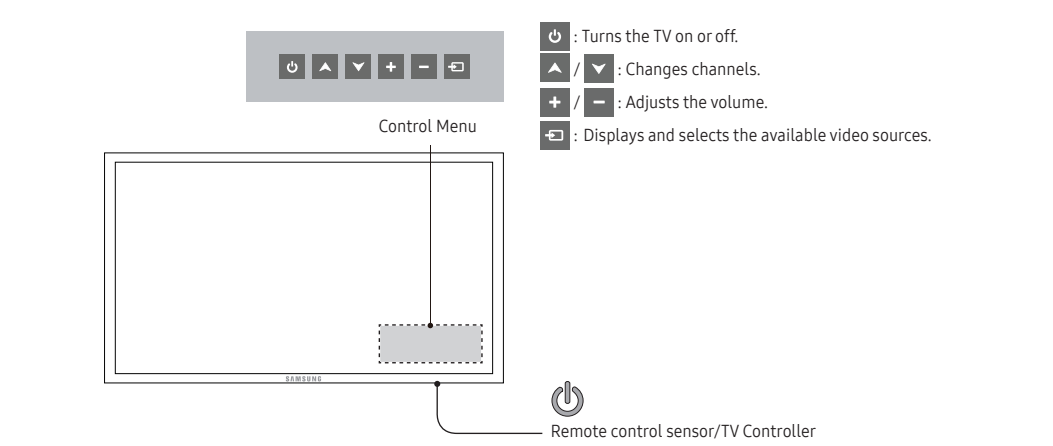
Cable Plugs	Ports/Jacks
HDMI	
USB	
Optical	

Do not plug cables in upside down. Be sure to check the orientation of the plug before plugging it in.



### TV Controller

The TV's Controller on the bottom right side of the TV, lets you control the TV without the remote control.



- The product color and shape may vary depending on the model.
- You cannot input the numbers by pressing the TV's controller.
- If you press it first, the control menu appears. You can select the function by pressing and holding the TV's controller.
- With the TV's Controller, you cannot perform other operations except for turning the TV on or off, changing the channel, adjusting the volume, and switching the input source.

### Plug & Play (Initial Setup)

When you turn the TV on for the first time, a sequence of screens and on-screen prompts will assist you in configuring the TV's basic settings. Press the POWER button. **Plug & Play** is available only when the Input source is set to TV. Set the initial setup following instructions that the TV guides.

- Connecting the power cord and antenna. (refer to 'Connections')

### Preferred Language

Digital channels only.

Digital-TV broadcasts can transmit many audio tracks simultaneously (for example, simultaneous translations of a program into foreign languages).

- You can only select a language from among the ones being broadcast.

### Multi-Track Sound (MTS)

Analogue channels only.

- Mono:** Select for channels that are broadcasting in mono or if you are having difficulty receiving a stereo signal.
- Stereo:** Select for channels that are broadcasting in stereo.
- SAP:** Select to listen to the Separate Audio Program, which is usually a foreign-language translation.
- Depending on the program being broadcast, you can listen to Mono, Stereo or SAP.

### SPDIF Output

The SPDIF (Sony Philips Digital InterFace) outputs an uncompressed digital audio signal when you connect the digital audio jack on the back of the TV to a digital audio in jack on a receiver or home theater.

- Audio Format:** You can select the Digital Audio output (SPDIF) format. The available Digital Audio output (SPDIF) format may differ depending on the input source.

- Audio Delay:** Lets you correct timing mismatches between the audio track and the video when you are watching the TV and listening to digital audio output from the TV through an external device such as an AV receiver.

When you adjust **Audio Delay**, a slider appears. Use the left and right arrow buttons to select the slider. Press ENTER when done (0ms ~ 250ms).

### Visually Impaired

(digital channels only)

Add a verbal description to the main audio to help the visually impaired.

### Dolby Digital Comp

Sets Dolby Digital compression mode.

### HDMI Audio Format

You can select the HDMI Audio format. The available HDMI Audio format may differ depending on the input source.

### Sound Reset

- Reset All:** Resets all sound settings to the factory defaults.

### Channel Menu

#### Memorizing Channels

When you first set up your TV using **Plug & Play**, the TV memorized the channels that were available over the air or through your cable system and added them to the Channel List. The Antenna and Auto Program functions described below let you re-run the channel memorization function without having to re-run the **Plug & Play** procedure.

#### Antenna (Air / Cable)

Before your television can memorize the available channels, you must select your TV's signal source, Air (using an antenna) or Cable. Select Menu > Channel > Antenna > Air or Cable. After you have selected the signal source, go on to the Auto Program function.

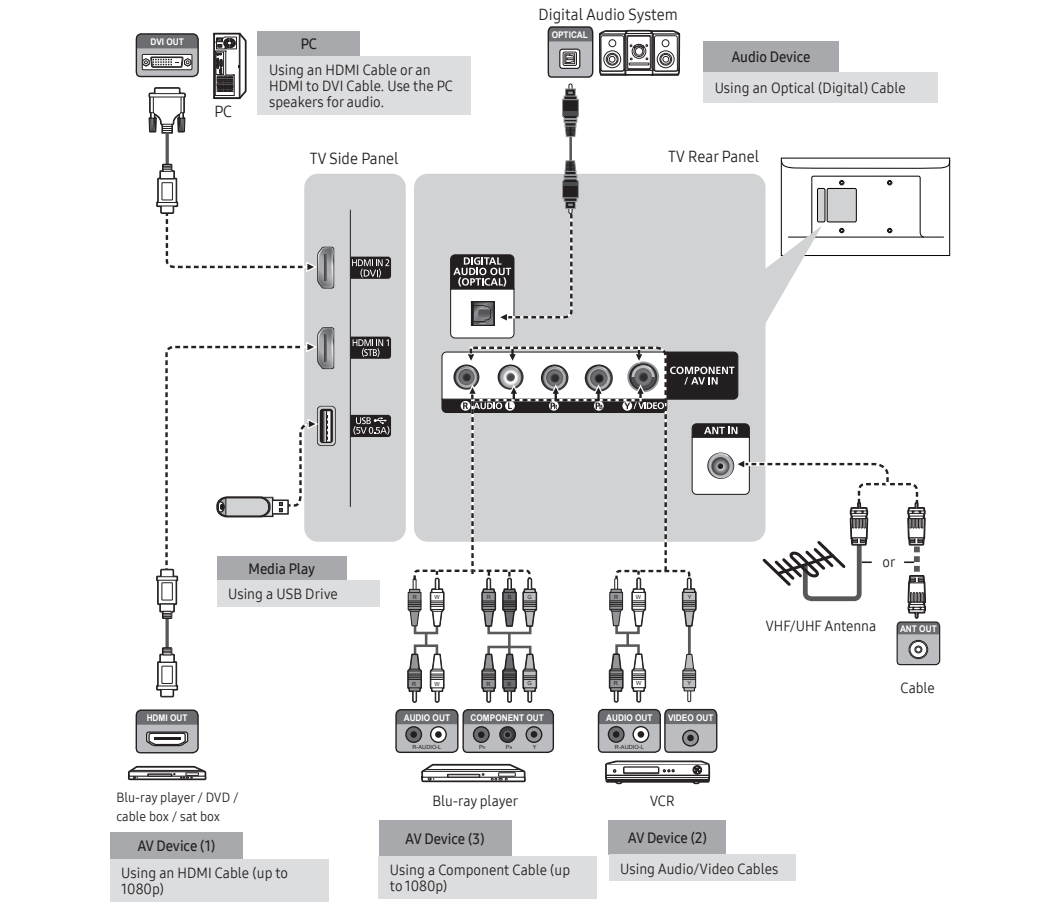
- Selecting the signal source using the **Antenna** function also determines the signal source the TV is tuned to. For example, if you receive your TV signal over the air, and you select **Cable**, you will see only snow. You must select **Air** to see a picture.

#### Display Icons Used in the Channel List Screens

Icons	Meaning
	A selected channel.
	A Favorite channel.
	A reserved program.
	A program currently being broadcast.

### Connections

- For the best picture and audio quality, connect digital devices using an HDMI cable.
- If you connect an external device to the TV that uses an older version of HDMI, the video and/or audio may not work. If this occurs, ask the manufacturer of the device about the HDMI version and, if it is out of date, request an upgrade.
- Be sure to purchase a certified HDMI cable. Otherwise, the picture may not display or a connection error may occur.
- PC/DVI AUDIO IN input is not supported.
- For an HDMI to DVI cable connection, you must use the HDMI IN 2 (DVI) port.
- Connecting through the HDMI cable may not be supported depending on the PC.
- If an HDMI to DVI cable is connected to the HDMI IN 2 (DVI) port, the audio does not work.
- For Set-top box connection using HDMI cable, we highly recommend you to connect the HDMI IN1 (STB) port.



### Input Menu

#### Source List

Use select TV or other external input sources such as DVD / Blu-ray players / cable box / STB satellite receiver connected to the TV.

- Press the SOURCE button.
  - Select a desired external input source.
    - TV / AV / Component / HDMI1 / HDMI2/DVI
- You can only choose devices that are connected to the TV. In the Source List, connected inputs are highlighted.

#### How to Use Edit Name

**Edit Name** lets you associate a device name to an input source, making it easier to select a source. To access **Edit Name**, enter the **Input menu**, and then select **Edit Name**. Select the name of the device from the drop down next to the name of the input jack it is connected to. For example, if your Blu-ray player is connected to HDMI 2, select Blu-ray player from the drop down next to HDMI 2.

- If you have connected a PC to the HDMI IN 2 (DVI) port with an HDMI cable, you should select PC mode in **Edit Name**.
- If you have connected a PC to the HDMI IN 2 (DVI) port with an HDMI to DVI cable, you should select DVI PC mode in **Edit Name**.
- If you have connected an AV device to the HDMI IN 2 (DVI) port with an HDMI to DVI cable, you should select DVI mode in **Edit Name**.

### The Channel List Tools Menu

The Channel List Tools menu contains most of the functions you can use on the **All Channels**, **Added Channels**, and **Favorite Channels** list screens. To view, select a List screen, select a channel, and then press the TOOLS button.

- Add / Delete:** Delete a channel from or add a channel to the **Added Channels** list. To delete channels from the **Added Channels** list, follow these steps:
  - Select one or more channels in the **Added Channels** list using the **▲▼** buttons and the **Yellow Select** button on your remote.
  - Press the TOOLS button on your remote. The Tools menu appears.
  - Select **Delete** in the Tools menu, and then press the ENTER button. The **Time Viewing** screen appears.

- To add channels to the **Added Channels** list, follow these steps:
  - Select one or more channels in the **All Channels** list using the **▲▼** buttons and the **Yellow Select** button on your remote.
  - Press the TOOLS button on your remote. The Tools menu appears.
  - Select **Add** in the Tools menu, and then press the ENTER button.

- All deleted channels will be shown on the **All Channels** list. You add channels back to the **Added Channels** list on the **All Channels** list.
  - A gray-colored channel indicates the channel has been deleted from the **Added Channels** list.
  - The **Add** menu option only appears for deleted channels.
- Add to Favorite/Delete from Favorite:** Lets you add channels to and delete channels from your **Favorite Channels** list.

- To add channels to the **Favorite Channels** list, follow these steps:
  - Select one or more channels in the **All Channels** list using the **▲▼** buttons and the **Yellow Select** button on your remote.
  - Press the TOOLS button on your remote. The Tools menu appears.
  - Select **Add to Favorite** in the Tools menu, and then press the ENTER button.

- To delete channels from the **Favorite Channels** list, follow these steps:
  - Select one or more channels in the **Favorite Channels** list using the **▲▼** buttons and the **Yellow Select** button on your remote.
  - Press the TOOLS button on your remote. The Tools menu appears.
  - Select **Delete from Favorite** in the Tools menu, and then press the ENTER button.

- Time Viewing:** You can schedule a channel to be displayed automatically at a set time, even when you are watching another channel. You must set the current time first in the **Time > Clock** function to use **Time Viewing**.

To schedule a channel, follow these steps:

- Select a channel in the **Added Channels** list using the **▲▼** buttons and the **Yellow Select** button on your remote.
- Press the TOOLS button on your remote. The Tools menu appears.
- Select **Time Viewing** in the Tools menu, and then press the ENTER button. The **Time Viewing** screen appears.

- Use the **▲▼** buttons to move from entry field to entry field and the **▲▼** buttons to change the entries. Where numbers are displayed, you can also enter numbers directly using the number keypad on your remote.
- If you select **Everyday** or **Every Week**, the date you select in the Date field becomes the start date for your scheduled viewing. For **Everyday**, the TV will turn on every day, at the time you selected, starting from that date. For **Every Week**, the TV will turn on every week, on the same day of the week as the start date you selected, at the time you selected, from that day on. If you select **Once**, the TV will turn on once, on the date and time you selected.
- Press the **ENTER** button on your remote when done.
- Only **Added Channels** can be scheduled.
- Scheduled programs and channels are displayed in the **Programmed List**.

- When you select a digital channel, press the **►** button to view the digital program list. If you highlight a program in the list, and then press the ENTER (Schedule) button, you set **Time Viewing** for that program directly.

- Channel Name Edit:** Analog channels only. Lets you assign a name of up to five characters to an analog channel. For example, **Hist**, **Foof**, **Golf**, etc. This makes it easier to find and select a channel.
- Select All:** Select all the channels in the displayed channel list.
- Deselect All:** Deselect all the selected displayed channels.
  - You can only select **Deselect All** when one or more channels are selected.
- Auto Program:** See **Auto Program** under **Memorizing Channels**.

**Programmed List (on the Channel List Screen)**

The **Programmed List** displays the channels and programs you have scheduled for viewing using the **Time Viewing** function. You can edit, modify, or delete a show you have scheduled using the functions on the **Programmed List** screen Tools menu.

- The **Time** you set will appear when you press the INFO button.
- Clock:** Set the clock so you can use the various time features of the TV. If you disconnect the power cord, you have to set the clock again. To set the clock, follow these steps:
  - Select **Setup/Time** in the Tools menu.
  - Press ENTER and select **Auto or Manual**, and then press ENTER again.
- If you selected **Auto**:
  - The TV will automatically download the correct time from a digital channel.
  - Select **Time**, on the right-hand side of the channel number in the channel banner, to select your **Time Zone**, and then press ENTER.
  - Select **Set** (Daylight Savings Time), and then press ENTER. Select **On** if you want to turn the DST adjustment on and off manually. Select **Off** to turn off the DST adjustment. Press ENTER when done.
  - The DST and Time Zone functions are only available when the **Clock Mode** is set to **Auto**.



Use the following buttons to select Manual.

The Clock Set screen appears. Use the **▲▼** buttons to change the values in each field or use the number buttons to enter the values directly. Use the **►►** buttons to move from field to field. When done with all the fields, press **ENTER**.

Available only when Clock Mode is set to Manual.

**Sleep Timer** **TOOLS**

Automatically shuts off the TV after a preset period of time. (30, 60, 90, 120, 150 and 180 minutes).

To cancel the Sleep Timer, select **Off**.

**Timer1 / Timer 2 / Timer 3**

Turns the TV on and off automatically at times and days you select. You can set three different on/off timer settings.

Use the **►►** buttons to select the day.

You must set the clock first.

**On Time / Off Time:** Set the hour, minute, am/pm, and Activate/Inactivate fields for the **On time** and **Off Time**. Use the **►►** buttons to move from field to field. Use the **▲▼** buttons to change the values in each field.

To activate the timer with the setting you have chosen, set the **Activate/Inactivate** field to **Activate**.

**Volume:** Set the desired loudness.

**Contents:** To select what will be turned on when the timer setting is activated. You can set the TV to turn on a specific channel or play back contents such as photo or audio files.

Use the **►►** buttons to move to the Contents field, and then press the **ENTER** button. The Contents screen appears. Use the **►►** buttons to move from field to field. Use the **▲▼** buttons to change the values in each field.

**TV/USB:** Select TV or USB. The USB device must be connected to your TV before you can select USB.

**Antenna:** Displays the current antenna source, **Air** or **Cable**.

**Channel:** If you have selected TV, select the desired channel.

**Music/Photo:** If you have selected USB, follow these steps to select a folder containing MP3 (Music) or JPEG (Photo) files on the USB device:

- Press the **ENTER** button. A list of folders on the device appears.
- If there are no folders on your device, press the **Yellow** select button to select the Root folder, and then press the **RETURN** button. The timer screen re-appears.

**Repeat, Select Once, Everyday, Mon-Fri, Mon-Sat, Sat-Sun, or Manual:** If you select **Manual**, you can select the days you want to activate the timer by using the **►►** buttons to highlight the day, and then pressing the **ENTER** button. To unselect a day, highlight it, and then press the **ENTER** button.

When you finished making all your selections on the Timer screen, press either the **ENTER** or **RETURN** button.

**Other Features Voice Guide (On/Off)**

You can activate voice guides that describe the menu options aloud to aid the visually impaired.

**Voice Guide:** Enable or disable the Voice Guide feature. Voice Guide is provided in the current language.

**Volume:** Set the volume of the voice guide.

**Pitch:** Set the pitch of the voice guide.

**Speed:** Set the speed of the voice guide.

**Game Mode (On/Off)**

When you connect a game console such as a PlayStation™ or Xbox™ to your TV, you can enjoy a more realistic gaming experience by turning on the **Game Mode** function.

**Game Mode:** Enable or disable the Game Mode feature. Game Mode is provided in the current language.

**Volume:** Set the volume of the voice guide.

**Pitch:** Set the pitch of the voice guide.

**Speed:** Set the speed of the voice guide.

**Game Mode (On/Off)**

When you connect a game console such as a PlayStation™ or Xbox™ to your TV, you can enjoy a more realistic gaming experience by turning on the **Game Mode** function.

**Game Mode:** Enable or disable the Game Mode feature. Game Mode is provided in the current language.

**Volume:** Set the volume of the voice guide.

**Pitch:** Set the pitch of the voice guide.

**Speed:** Set the speed of the voice guide.

**Game Mode (On/Off)**

When you connect a game console such as a PlayStation™ or Xbox™ to your TV, you can enjoy a more realistic gaming experience by turning on the **Game Mode** function.

**Game Mode:** Enable or disable the Game Mode feature. Game Mode is provided in the current language.

**Volume:** Set the volume of the voice guide.

**Pitch:** Set the pitch of the voice guide.

**Speed:** Set the speed of the voice guide.

**Game Mode (On/Off)**

When you connect a game console such as a PlayStation™ or Xbox™ to your TV, you can enjoy a more realistic gaming experience by turning on the **Game Mode** function.

**Game Mode:** Enable or disable the Game Mode feature. Game Mode is provided in the current language.

**Volume:** Set the volume of the voice guide.

**Pitch:** Set the pitch of the voice guide.

**Speed:** Set the speed of the voice guide.

**Game Mode (On/Off)**

When you connect a game console such as a PlayStation™ or Xbox™ to your TV, you can enjoy a more realistic gaming experience by turning on the **Game Mode** function.

**Game Mode:** Enable or disable the Game Mode feature. Game Mode is provided in the current language.

**Volume:** Set the volume of the voice guide.

**Pitch:** Set the pitch of the voice guide.

**Speed:** Set the speed of the voice guide.

**Game Mode (On/Off)**

When you connect a game console such as a PlayStation™ or Xbox™ to your TV, you can enjoy a more realistic gaming experience by turning on the **Game Mode** function.

**Game Mode:** Enable or disable the Game Mode feature. Game Mode is provided in the current language.

**Volume:** Set the volume of the voice guide.

**Pitch:** Set the pitch of the voice guide.

**Speed:** Set the speed of the voice guide.

**Game Mode (On/Off)**

When you connect a game console such as a PlayStation™ or Xbox™ to your TV, you can enjoy a more realistic gaming experience by turning on the **Game Mode** function.

**Game Mode:** Enable or disable the Game Mode feature. Game Mode is provided in the current language.

**Volume:** Set the volume of the voice guide.

**Pitch:** Set the pitch of the voice guide.

**Speed:** Set the speed of the voice guide.

**Game Mode (On/Off)**

When you connect a game console such as a PlayStation™ or Xbox™ to your TV, you can enjoy a more realistic gaming experience by turning on the **Game Mode** function.

**Game Mode:** Enable or disable the Game Mode feature. Game Mode is provided in the current language.

**Volume:** Set the volume of the voice guide.

**Pitch:** Set the pitch of the voice guide.

**Speed:** Set the speed of the voice guide.

**Game Mode (On/Off)**

When you connect a game console such as a PlayStation™ or Xbox™ to your TV, you can enjoy a more realistic gaming experience by turning on the **Game Mode** function.

**Game Mode:** Enable or disable the Game Mode feature. Game Mode is provided in the current language.

**Volume:** Set the volume of the voice guide.

**Pitch:** Set the pitch of the voice guide.

**Speed:** Set the speed of the voice guide.

**Game Mode (On/Off)**

When you connect a game console such as a PlayStation™ or Xbox™ to your TV, you can enjoy a more realistic gaming experience by turning on the **Game Mode** function.

**Game Mode:** Enable or disable the Game Mode feature. Game Mode is provided in the current language.

**Volume:** Set the volume of the voice guide.

**Pitch:** Set the pitch of the voice guide.

**Speed:** Set the speed of the voice guide.

**Game Mode (On/Off)**

When you connect a game console such as a PlayStation™ or Xbox™ to your TV, you can enjoy a more realistic gaming experience by turning on the **Game Mode** function.

**Game Mode:** Enable or disable the Game Mode feature. Game Mode is provided in the current language.

**Volume:** Set the volume of the voice guide.

**Pitch:** Set the pitch of the voice guide.

**Speed:** Set the speed of the voice guide.

**Game Mode (On/Off)**

When you connect a game console such as a PlayStation™ or Xbox™ to your TV, you can enjoy a more realistic gaming experience by turning on the **Game Mode** function.

**Game Mode:** Enable or disable the Game Mode feature. Game Mode is provided in the current language.

**Volume:** Set the volume of the voice guide.

**Pitch:** Set the pitch of the voice guide.

**Speed:** Set the speed of the voice guide.

**Game Mode (On/Off)**

When you connect a game console such as a PlayStation™ or Xbox™ to your TV, you can enjoy a more realistic gaming experience by turning on the **Game Mode** function.

**Game Mode:** Enable or disable the Game Mode feature. Game Mode is provided in the current language.

**Volume:** Set the volume of the voice guide.

**Pitch:** Set the pitch of the voice guide.

**Speed:** Set the speed of the voice guide.

**Game Mode (On/Off)**

When you connect a game console such as a PlayStation™ or Xbox™ to your TV, you can enjoy a more realistic gaming experience by turning on the **Game Mode** function.

**Game Mode:** Enable or disable the Game Mode feature. Game Mode is provided in the current language.

**Volume:** Set the volume of the voice guide.

**Pitch:** Set the pitch of the voice guide.

**Speed:** Set the speed of the voice guide.

**Game Mode (On/Off)**

When you connect a game console such as a PlayStation™ or Xbox™ to your TV, you can enjoy a more realistic gaming experience by turning on the **Game Mode** function.

**Game Mode:** Enable or disable the Game Mode feature. Game Mode is provided in the current language.

**Volume:** Set the volume of the voice guide.

**Pitch:** Set the pitch of the voice guide.

**Speed:** Set the speed of the voice guide.

**Game Mode (On/Off)**

When you connect a game console such as a PlayStation™ or Xbox™ to your TV, you can enjoy a more realistic gaming experience by turning on the **Game Mode** function.

**Game Mode:** Enable or disable the Game Mode feature. Game Mode is provided in the current language.

**Volume:** Set the volume of the voice guide.

**Pitch:** Set the pitch of the voice guide.

**Speed:** Set the speed of the voice guide.

**Game Mode (On/Off)**

When you connect a game console such as a PlayStation™ or Xbox™ to your TV, you can enjoy a more realistic gaming experience by turning on the **Game Mode** function.

**Game Mode:** Enable or disable the Game Mode feature. Game Mode is provided in the current language.

**Volume:** Set the volume of the voice guide.

**Pitch:** Set the pitch of the voice guide.

**Speed:** Set the speed of the voice guide.

**Game Mode (On/Off)**

When you connect a game console such as a PlayStation™ or Xbox™ to your TV, you can enjoy a more realistic gaming experience by turning on the **Game Mode** function.

**Game Mode:** Enable or disable the Game Mode feature. Game Mode is provided in the current language.

**Volume:** Set the volume of the voice guide.

**Pitch:** Set the pitch of the voice guide.

**Speed:** Set the speed of the voice guide.

**Game Mode (On/Off)**

When you connect a game console such as a PlayStation™ or Xbox™ to your TV, you can enjoy a more realistic gaming experience by turning on the **Game Mode** function.

**Game Mode:** Enable or disable the Game Mode feature. Game Mode is provided in the current language.

**Volume:** Set the volume of the voice guide.

**Pitch:** Set the pitch of the voice guide.

**Speed:** Set the speed of the voice guide.

**Game Mode (On/Off)**

When you connect a game console such as a PlayStation™ or Xbox™ to your TV, you can enjoy a more realistic gaming experience by turning on the **Game Mode** function.

## Program Rating Lock

The Program Rating Lock feature lets you block programs you've determined are inappropriate for your children based on the program's ratings. To access the Program Rating Lock feature and make any changes, you must enter a PIN (personal identification number). To watch a blocked program, you also enter the same PIN.

**Program Rating Lock** is not available in HDMI or Component mode.

The default PIN number of a new TV set is "0-0-0-0". You can set your own PIN using the **Change PIN** function.

## How It Works

When you access the Program Rating Lock Menu functions for the first time, the PIN input screen appears. Enter 0-0-0-0. The PIN screen closes and the Program Rating Lock Menu appears. Every time you access the Program Rating Lock functions, the PIN screen will appear and you must enter a PIN.

When the Rating Lock screen appears, select **Program Rating Lock**, and then press **ENTER**. Select **On**, and then press the **ENTER** key again. Depending on what type of programs or movies you want to block, select one of the options on the screen, and then press the **ENTER** button. The options are listed below.

**Parental Guidelines:** You can block TV programs based on their ratings. This function allows you to control what your children are watching.

**MPEG Rating:** You can block movies based on their MPAA ratings. The Motion Picture Association of America (MPAA) has implemented a rating system that provides parents or guardians with advanced information on which films are appropriate for children.

**Canadian English:** You can block TV programs based on their Anglophone Canadian ratings.

**Canadian French:** You can block TV programs based on their French Canadian ratings.

**Downloadable U.S. Rating:** You can use parental restriction information while watching DVD channels.

**Locking/Blocking Programs or Movies**

Use this function to lock block programs and/or movies in essentially the same way for each option. Each option displays a grid of table. All the tables have ratings listed on the left. The TV Parental Guidelines option also has kinds of content listed across the top. All Lock all TV ratings: / FV: Fantasy violence / V: Violence / S: Sexual situation / L: Adult Language / D: Sexually Suggestive Dialog.

To lock block movies or shows with certain ratings and/or kinds of content, click the square next to the rating and/or under the kind of content. A lock appears. To unlock/unblock, click the square again. When you click a lock rating, all the ratings above it will also display locks. You can also allow All or Lock All. When done, press the **RETURN** button on your remote.

**Change PIN:** Select **Change PIN** and the Change PIN screen appears. Choose any 4 digits for your PIN, and then enter them in the Enter New PIN fields. Re-enter the same 4 digits in the Confirm New PIN fields. When the Change PIN screen disappears, press the OK button. The TV has memorized your new PIN.

If you forget the PIN, press the remote-control buttons in the following sequence, which resets the pin to "0-0-0-0": **POWER (Off)** + **MUTE** + **8** + **2** + **4** + **POWER (on)**.

## Caption

**(On-Screen Text Dialogue)**

**Caption:** You can switch the caption function on or off. If captions are not available, they will not be displayed on the screen.

The Caption feature does not work in **Component** or **HDMI** mode.

**Default Mode:** You can select the desired caption mode.

**Caption / CC1-CC4 / Text1-Text4:** (Analog channels only) The Analog Caption function operates in either analog TV channel mode or when a signal is supplied from an external device to the TV. (Depending on the broadcasting signal, the Analog Caption function may or may not work with digital channels.)

**Default / Service1-SERVICE / CC1-CC4 / Text1-Text4:** (Digital channels only) The Digital Caption function works with digital channels.

**Service1:** May not be available in digital caption mode depending on the broadcast.

**Digital Caption Options:** (Digital channels only)

Size: Options include Default, Small, Standard, Large, and Extra large. The default is Standard.

Font Style: Options include Default and Styles 0 to 7. The default is Style 0.

Foreground Color: Options include Default, White, Black, Red, Green, Blue, Yellow, Magenta, and Cyan. You can change the color of the letters. The default is White.

Background Color: Options include Default, White, Black, Red, Green, Blue, Yellow, Magenta, and Cyan. You can change the background color of the captions. The default is Black.

Window Color: Options include Default, White, Black, Red, Green, Blue, Yellow, Magenta, and Cyan. Default is Black.

**Foreground Opacity:** This adjusts the opacity of text. Options include Default, Transparent, Translucent, Solid, and Flashing.

**Background Opacity:** This adjusts the opacity of the caption background. Options include Default, Transparent, Translucent, Solid, and Flashing.

**Window Opacity:** This refers caption to window background, not character background. Options include Default, Transparent, Translucent, Solid, Flashing, Default is Transparent.

**Edge Type:** Options include No Edge, Raised, Depressed, Uniform, Drop Shadow. Default is No Edge.

**Edge Color:** Options include Default, White, Black, Red, Green, Blue, Yellow, Magenta, and Cyan. Default is White.

**Return to Default:** This option sets Size, Font Style, Foreground Color, Background Color, Foreground Opacity, and Background Opacity to its default.

**Options include Default, White, Black, Red, Green, Blue, Yellow, Magenta, and Cyan. Default is White.**

**Return to Default:** This option sets Size, Font Style, Foreground Color, Background Color, Foreground Opacity, and Background Opacity to its default.

**Options include Default, White, Black, Red, Green, Blue, Yellow, Magenta, and Cyan. Default is White.**

**Return to Default:** This option sets Size, Font Style, Foreground Color, Background Color, Foreground Opacity, and Background Opacity to its default.

**Options include Default, White, Black, Red, Green, Blue, Yellow, Magenta, and Cyan. Default is White.**

**Return to Default:** This option sets Size, Font Style, Foreground Color, Background Color, Foreground Opacity, and Background Opacity to its default.

**Options include Default, White, Black, Red, Green, Blue, Yellow, Magenta, and Cyan. Default is White.**

**Return to Default:** This option sets Size, Font Style, Foreground Color, Background Color, Foreground Opacity, and Background Opacity to its default.

**Options include Default, White, Black, Red, Green, Blue, Yellow, Magenta, and Cyan. Default is White.**

**Return to Default:** This option sets Size, Font Style, Foreground Color, Background Color, Foreground Opacity, and Background Opacity to its default.

**Options include Default, White, Black, Red, Green, Blue, Yellow, Magenta, and Cyan. Default is White.**

**Return to Default:** This option sets Size, Font Style, Foreground Color, Background Color, Foreground Opacity, and Background Opacity to its default.

**Options include Default, White, Black, Red, Green, Blue, Yellow, Magenta, and Cyan. Default is White.**

**Return to Default:** This option sets Size, Font Style, Foreground Color, Background Color, Foreground Opacity, and Background Opacity to its default.

**Options include Default, White, Black, Red, Green, Blue, Yellow, Magenta, and Cyan. Default is White.**

**Return to Default:** This option sets Size, Font Style, Foreground Color, Background Color, Foreground Opacity, and Background Opacity to its default.

**Options include Default, White, Black, Red, Green, Blue, Yellow, Magenta, and Cyan. Default is White.**

**Return to Default:** This option sets Size, Font Style, Foreground Color, Background Color, Foreground Opacity, and Background Opacity to its default.

**Options include Default, White, Black, Red, Green, Blue, Yellow, Magenta, and Cyan. Default is White.**

**Return to Default:** This option sets Size, Font Style, Foreground Color, Background Color, Foreground Opacity, and Background Opacity to its default.

**Options include Default, White, Black, Red, Green, Blue, Yellow, Magenta, and Cyan. Default is White.**

**Return to Default:** This option sets Size, Font Style, Foreground Color, Background Color, Foreground Opacity, and Background Opacity to its default.

**Options include Default, White, Black, Red, Green, Blue, Yellow, Magenta, and Cyan. Default is White.**

**Return to Default:** This option sets Size, Font Style, Foreground Color, Background Color, Foreground Opacity, and Background Opacity to its default.

**Options include Default, White, Black, Red, Green, Blue, Yellow, Magenta, and Cyan. Default is White.**

**Return to Default:** This option sets Size, Font Style, Foreground Color, Background Color, Foreground Opacity, and Background Opacity to its default.

**Options include Default, White, Black, Red, Green, Blue, Yellow, Magenta, and Cyan. Default is White.**

**Return to Default:** This option sets Size, Font Style, Foreground Color, Background Color, Foreground Opacity, and Background Opacity to its default.

**Options include Default, White, Black, Red, Green, Blue, Yellow, Magenta, and Cyan. Default is White.**

**Return to Default:** This option sets Size, Font Style, Foreground Color, Background Color, Foreground Opacity, and Background Opacity to its default.

**Options include Default, White, Black, Red, Green, Blue, Yellow, Magenta, and Cyan. Default is White.**

**Return to Default:** This option sets Size, Font Style, Foreground Color, Background Color, Foreground Opacity, and Background Opacity to its default.

**Options include Default, White, Black, Red, Green, Blue, Yellow, Magenta, and Cyan. Default is White.**

**Return to Default:** This option sets Size, Font Style, Foreground Color, Background Color, Foreground Opacity, and Background Opacity to its default.

**Options include Default, White, Black, Red, Green, Blue, Yellow, Magenta, and Cyan. Default is White.**

**Return to Default:** This option sets Size, Font Style, Foreground Color, Background Color, Foreground Opacity, and Background Opacity to its default.

**Options include Default, White, Black, Red, Green, Blue, Yellow, Magenta, and Cyan. Default is White.**

**Return to Default:** This option sets Size, Font Style, Foreground Color, Background Color, Foreground Opacity, and Background Opacity to its default.

**Options include Default, White, Black, Red, Green, Blue, Yellow, Magenta, and Cyan. Default is White.**

**Return to Default:** This option sets Size, Font Style, Foreground Color, Background Color, Foreground Opacity, and Background Opacity to its default.

**Options include Default, White, Black, Red, Green, Blue, Yellow, Magenta, and Cyan. Default is White.**

## Energy Saving

**Energy Saving (Off / Low / Medium / High):** Lets you adjust the brightness of the TV to reduce power consumption.

**Auto Power Off (Off / On):** To enhance your power savings the picture settings will automatically adjust to the light in the room.

This function may not be available, depending on the model.

**No Signal Power Off (Off / 15 min. / 30 min. / 40 min. / 3-sec):** how quickly the TV switches to standby mode, if no picture is being received.

Disabled when an attached PC is in power saving mode.

**Auto Power Off (Off / On):** When Auto Power Off is set to On, the TV will automatically turn off when no user operation is detected for 4 hours.

## Application Menu

Enjoy photos, music, and/or movie files saved on a USB Mass Storage Class (MSC) device.

## Connecting a USB Device

- Turn on your TV.
- Connect a USB device containing photo, music, and/or movie files to the USB jack on the back of the TV. A pop up window appears.
- Press the Media.P button on your remote. The Media Play menu appears.

## Using the Media Play Menu

To open Media Play in the Menu, follow these steps:

- Press the MENU button. Then, press the **▲** or **▼** button to select **Applications** on the left, and then press the **ENTER** button.
- Press the **▲** or **▼** button to select **Media Play (USB)**, and then press the **ENTER** button.
- Press the **▲** or **▼** button to select an icon (Videos, Music, Photos, Settings), and then press the **ENTER** button.

**Media Play might not work properly with unlicensed multimedia files.**

Read the list below before using Media Play (USB)

- The file system supports FAT16, FAT32, and NTFS.
- Certain types of USB Digital camera and audio devices may not be compatible with this TV.
- Media Play only supports USB Mass Storage Class (MSC) devices. MSC is a Mass Storage Class Bulk-Only Transport device.

Examples of MSC are Thumb drives and Flash Card Readers. Devices should be connected directly to the TV's USB port. USB HDD is not supported.

Before connecting your device to the TV, please back up your files to prevent file damage or loss of data. SAMSUNG is not responsible for any data file damage or data loss.

A USB device that requires high power (more than 0.5A) may not be supported.

Do not disconnect the USB device while it is loading.

The higher the resolution of the image, the longer it takes to display on the screen.

The maximum supported JPEG resolution is 15360 x 8640 pixels.

If a file is corrupted or the TV does not support the file type, the "Not Supported File Format" message appears.

The TV cannot play MP3 files with DRM that have been downloaded from a for-pay site. Digital Rights Management (DRM) is a technology that supports the creation, distribution, and management of digital content in an integrated and comprehensive way, including protecting the rights and interests of content providers, preventing illegal copying of contents, and managing billing and settlements.

PTP (Pier to Pier) devices are not supported.

If an over-power warning message is displayed while you are connecting or using a USB device, the device may not be recognized or may malfunction.

## Auto Protection Time

**Auto Protection Time (Off / 2 hours / 4 hours / 8 hours / 10 hours):** If the screen remains idle with a still image for a certain period of time you define, the screen saver is activated to prevent the formation of ghost images on the screen.

If the TV has no input during the time period set in Auto

The power-saving mode of some external hard disk drives may be released automatically when you connect them to the TV.

If you use a USB extension cable, the TV may not recognize the USB device or may not be able to read the files on the device.

If a USB device connected to the TV is not recognized, the list of files on the device is corrupted, or a file in the list is not played, connect the USB device to a PC, format the device, and check the connection.

If a file you deleted from the PC is still found when you run Media Play, use the "Empty the Recycle Bin" function on the PC to permanently delete the file.

Photos only supports the sequential jpeg format.

The Videos option does not support the scene search and thumbnail functions.

If the number of files and folders saved on a USB storage device is over approximately 4000, the files and folders may not appear and some folders may not open.

The maximum displayed number of files, including sub folders, in one folder of a USB storage device is 1000.

The media may not play smoothly if you use a USB device rated lower than USB 2.0.

## Videos

1. In the Media Play menu, press the **◀** or **▶** button to select Videos, and then press the **ENTER** button.

2. Press the **◀►/▲▼** buttons to select a video in the file list.

3. Press the **ENTER** button or **▶** (Play) button.

The file name is displayed on the top of the screen with the playing time.

If video time information is unknown, playing time and the progress bar are not displayed.

During video playback, you can search using the **◀** and **▶** buttons.

In this mode, you can play movie clips contained in a game, but you cannot play the game itself.

Supported Subtitle Formats

- External

Name	File extension
MPEG-4 timed text	.txt
SAMI	.smi
SubRip	.rt
SubViewer	.sub
Micro DVD	.sub or .txt
SubStation Alpha	.ssa
Advanced SubStation Alpha	.ass

Internal

Name	Container	Format
XSub	AVI	Picture Format
SubStation Alpha	MKV	Text Format
Advanced SubStation Alpha	MKV	Text Format
SubRip	MKV	Text Format
MPEG-4 Timed text	MP4	Text Format

Supported Video Formats

*.3gp	MP4						HE-AAC
*.3gp	3GP						WMA
*.mpg	MOV	Divx 3.11 / 4	1920x1080	MAX 30		30	Dolby
*.mpeg	FLV	1 / 5 / 6					Dolby Digital Plus
*.ts	VRO	MPEG4 SP/ ASP					MPEG(MP3)
*.tp	VOB	Window Media Video v9(VC1)					DTS (Core, LBR)
*.trp	TS	MPEG2					G.711(A-Law, μ-Law)
*.mov	PS	MPEG1					
*.flv							
*.divx							
*.dat							
*.webm	WebM	Vp8	1920x1080	6-30	20		Vorbis