

Mantis

Caracole

Melding the smoky sheen of metal and softness of velvet, the Mantis chair introduces a sleek curvilinear form with artistic appeal. Its tall back and cushioned seat appear to be suspended within a sculptural frame, composed of opposing and intersecting arcs joined at the front by upright legs.



SKU: UPH-422-231-A

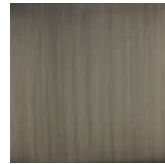
Dimensions in Inches: 28.0W × 35.0D × 41.75H

Dimensions in CM: 71.12W × 88.9D × 106.045H

Features:

- Metal frame in Smoked Stainless.

Finish:



Smoked Stainless

Fabric:



2892-79CC

Construction: Webbing. Seat cushion with foam.