

REF18WCBPRV

18" BUILT-IN WINE CELLAR COLUMN, RIGHT SWING DOOR, PANEL READY
(STAINLESS STEEL PANEL KIT AVAILABLE)



Preserve the character of your favorite wine and champagne as a result of zone dedicated evaporators, UV light-shielding glass window and vibration-free variable speed compressor.

Enjoy flexible storage of all types of bottles with Bertazzoni wine columns, designed with three independently adjustable temperature zones from 41°F to 68°F.

Ensure the utmost in bottle storage with a beechwood shelf design anchored by a premium telescopic smooth motion glide system.

Access temperature for each zone and interior lighting settings through the intuitive digital touch control interface.

Fresh pure air circulation with charcoal layered filters preventing unwanted scent crossover, for optimal wine preservation.

Achieve truly flush front alignment with the adjacent cabinets with minimal clearance on the sides.

Create single, double, triple and more columns configurations to best suit your kitchen layout.

Choose Professional, Master or Heritage Series handle kit to match your other Bertazzoni kitchen appliances. Purchase Décor Sets in Gold (DS2HERTGO), Polished Copper (DS2HERTPC) or Satin Black (DS2HERTSB) to personalize your Heritage Series handles (6 handle finials per set).

2 years parts & labor warranty and 5 years labor warranty for the entire sealed system.

PRODUCT FEATURES

Size	H: 83 9/16" W: 17 3/4" D: 23 1/2"
Refrigerator type	Built-in wine cellar column
Door finish	Panel ready
Interior finish	Stainless steel back wall
User interface	Internal digital LED touch interface
Lighting	LED lights interior illumination
Wine racks	14 wooden shelves
Cooling system	Three temperature zones
Modes	Entertainment mode, Light color selection, Sabbath mode, Showroom mode
Open door alarm	Yes

INTERIOR CAPACITY

Bottle capacity	68
-----------------	----

TECHNICAL SPECIFICATIONS

Electrical supply	110 V 60 HZ - 150 W 1.5 Amp
Power connection	NEMA 5-15P with 90" power cord
Energy consumption	226.0 kWh/yr
Certification	DOE Compliant,ETL
Warranty	2 years parts & labor Sealed system: 5 years labor
Packaging dimensions and weight	W 20 1/4" H 90 9/16" D 26 3/8" 302.0 lbs

OPTIONAL ACCESSORIES

SP18WXV	Stainless steel door panel kit
PROHKCOL	Handle kit - Professional series
MASHKCOL	Handle kit - Master series
HERHKCOL	Handle kit - Heritage series

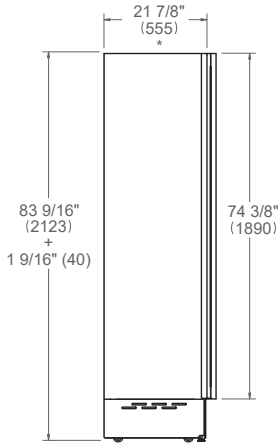
REF18WCBPRV

18" BUILT-IN WINE CELLAR COLUMN, RIGHT SWING DOOR, PANEL READY
(STAINLESS STEEL PANEL KIT AVAILABLE)

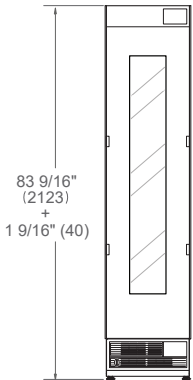


PRODUCT DIMENSIONS

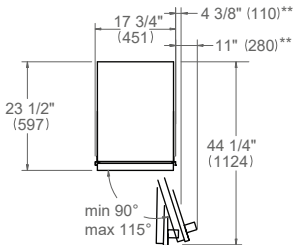
SIDE VIEW



FRONT VIEW



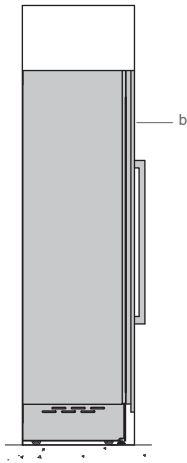
TOP VIEW



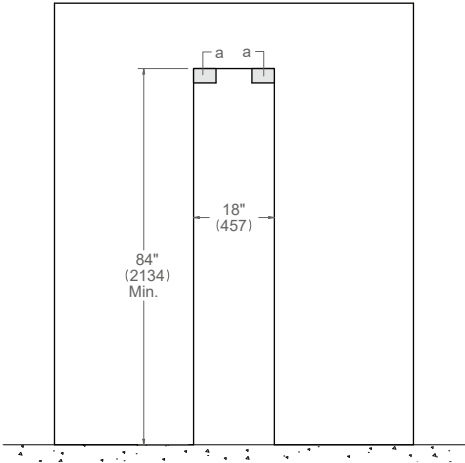
* Depth without door
** Maximum Overall Handle Dimension, 3/4" (19) door panel thickness

CUTOUT DIMENSIONS

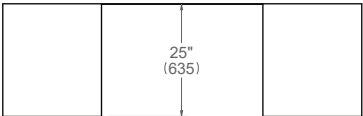
SIDE VIEW



FRONT VIEW



TOP VIEW



For a 25" (635) flush inset depth, max door panel thickness is 15/16" (24). Max door panel weight is 66 lbs (30 kg).

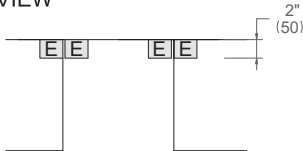
- (a) Anti-tipping brackets – included with appliance
- (b) Panel dimensions available on Door Panel Specs, Built-in Food Preservation Design Guide or Installation Manual

ELECTRICAL CONNECTION

E A properly-grounded, horizontally-mounted electrical receptacle should be installed according to this drawing.

Connection(s) placement within the opening may require additional cabinet depth.

TOP VIEW



FRONT VIEW



Dimensions in parentheses are millimeters unless otherwise specified.

INSTALLATION REQUIREMENTS

If the appliance(s) is not connected through the side profile trims to secured cabinetry anti-tip brackets must be installed.

A separate circuit breaker servicing only this appliance is recommended.
For installation of multiple products in combination, refer to the Built-in Food Preservation Design Guide at us.bertazzoni.com or ca.bertazzoni.com

Disclaimer: while every effort has been made to ensure the accuracy of the information contained in this document, Fratelli Bertazzoni reserves the right to change it at any time without notice. For detailed installation instructions, consult the installation manual. Fratelli Bertazzoni, Bertazzoni and the winged wheel brand icon are registered trademarks of Bertazzoni Spa.