







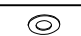
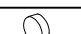
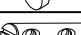


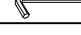



Assembly Instruction For ARM BARSTOOL D-1710-8-BST3

Caution: Please read instructions thoroughly before unpacking assembly parts. Sharp, exposed staple tips can cause injury, therefore, for your protection, please remove any exposed staples used in packing.

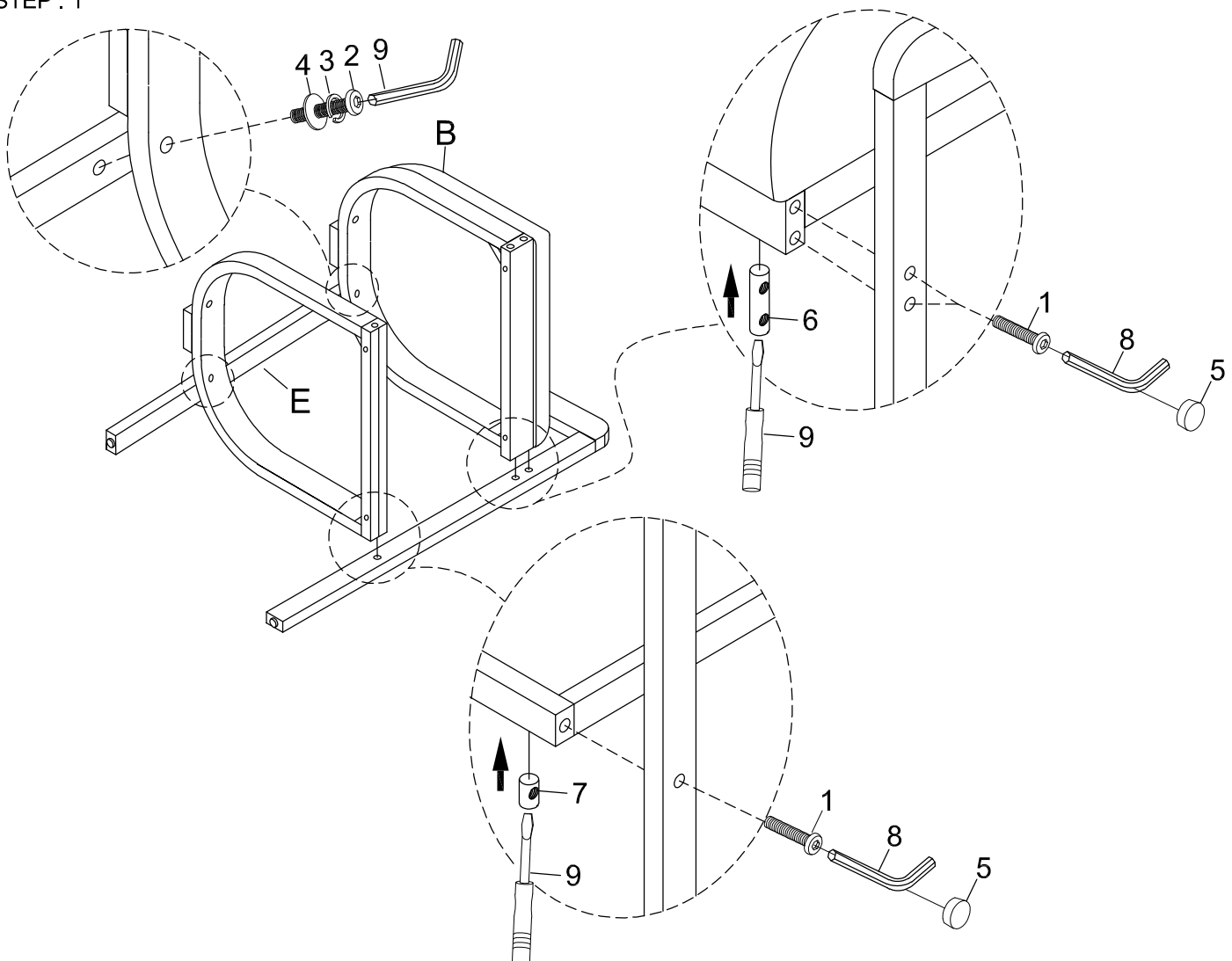
1. We recommend that you should assemble this product with the assistance of another person; this will make assembly easier, and will help to eliminate damage to the product or injury to persons during assembly.
2. Be sure to check all packing materials carefully for small parts that may have come loose inside the carton during shipment.
3. Please do not over tighten screws or bolts.
4. Please put all parts on a non-abrasive floor before assembly, and follow the assembly steps to assemble your newly purchased product correctly and efficiently.

PART LIST				
No.	PART DESC		CODE.	Q'TY
A	BACKREST		PD-1710-8-CBST3BAC	1
B	SEAT CUSHION WITH FRAME		PD-1710-8-CBST3SEA	1
C	STRETCHER WITH METAL PLATE		PD-1710-8-CBST3STR	1
D	LHF LEG FRAME		PD-1710-8-BST3LEGL	1
E	RHF LEG FRAME		PD-1710-8-BST3LEGR	1

HARDWARE LIST				
NO.	HARDWARE DESC		CODE.	Q'TY
1		ALLEN BOLT (1/4"x 2-1/2")	PD-1710-CBST3HW	6
2		ALLEN BOLT (1/4"x 1-1/2")		6
3		SPRING WASHER(1/4")		4
4		FLAT WASHER (1/4"x 7/8")		4
5		NUTS (5/8"x 5/16")		8
6		BARREL NUTS (Ø10x 2")		2
7		BARREL NUTS (Ø10x 1/2")		2
8		ALLEN KEY(M4)		1
9		SCREW DRIVER (5x 2-3/8")		1

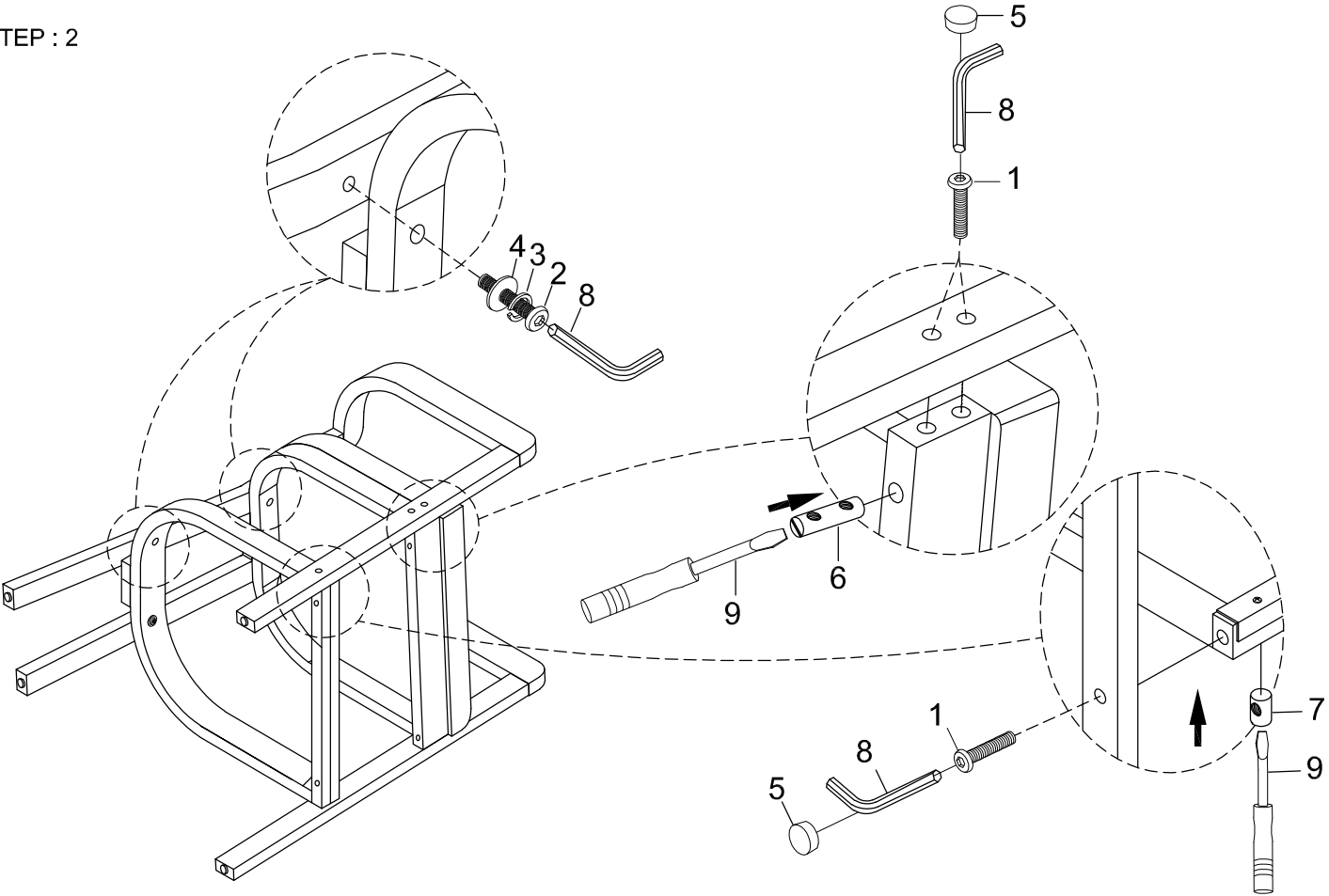
 Only tighten all bolts when all bolts aligned with bolt inserts.

STEP : 1

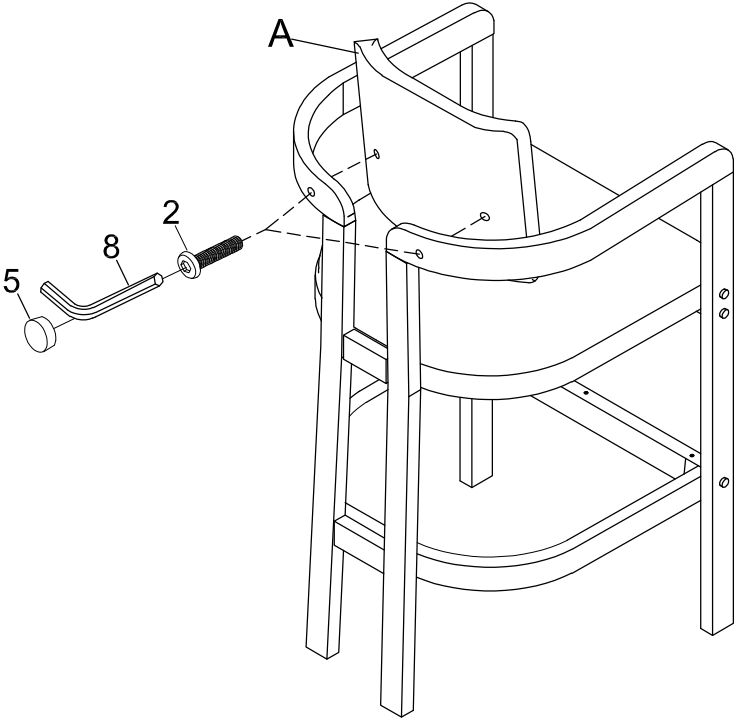


Assembly Instruction For
ARM BARSTOOL
D-1710-8-BST3

STEP : 2



STEP : 3



COMPLETED

