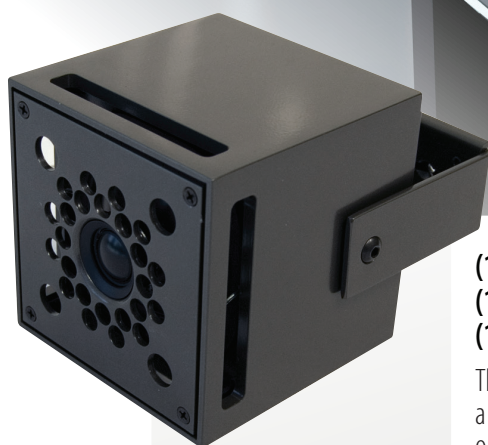


43CUBE CUBE SERIES

4" 2-WAY INDOOR | OUTDOOR CONTEMPORARY SPEAKER



- (1) 4" (101mm) Aluminum Active Driver
- (1) 4" (101mm) Aluminum Passive Driver
- (1) .75" (19mm) Aluminum Dome Tweeter

Size	4.5 h x 4.5 w x 4.5 d (in) 114 h x 114 w x 114 d (mm)
Freq Response	70Hz - 22kHz \pm 3dB
Impedance	8 ohms
Sensitivity	86dB 2.83V /1m
Power req.	25-150W
Woofer	(1) 4" (101mm) Aluminum Active (1) 4" (101mm) Aluminum Passive
Tweeter	(1) .75" (19mm) Aluminum Dome
Finishes	Gloss Black, Gloss White, Custom

The 43CUBE, the first in the Cube Series, is designed for versatile integration of small speakers for a wide variety of applications with as limited environmental impact as possible. With no ceiling or wall mounting required, these compact, free standing speakers pack a powerful punch in a tight package. With a dual active and passive woofer design, accompanied by a small coaxially mounted tweeter, these small footprint speakers cannot simply be described as full range. Despite their small size, these wondrous speakers—crafted by our team of engineers—deliver impressive frequency response, wide dispersion, astounding output, and the same high quality sound that James Loudspeaker is dedicated to providing. In this sleek modern cubic design, these bookshelf speakers effortlessly combine elegant design with stellar audio performance, offering a no-compromise solution to both designers and audiophiles alike.

Whether for your home theater or outdoor patio, your ears won't believe what your eyes are seeing. The high output and broad response of these speakers deliver more than you would expect for any environment you desire. Solidly sealed, aircraft grade aluminum enclosures and all weather high excursion woofers and durable tweeters ensure years of enjoyment both indoors and outside.

For outdoor/marine applications, order the 43CUBEM.



535 Airpark Road, Napa, CA 94558
Ph: 707.265.6343
www.jamesloudspeaker.com

SMALL BUT MIGHTY

20150811