

FORTÉ

24" Single Electric Wall Oven

F24WOCVSS

CLICK TO
VIEW IN KITCHEN

FRONT



OPEN



DETAIL



PRODUCT DIMENSIONS

Width (Exterior)	24 in.	60.9cm
Width	23 ⁶ / ₁₆ in.	59.3cm
Height	23 ⁷ / ₁₆ in.	59.5cm
Depth	21 ⁹ / ₁₆ in.	54.7cm
Depth w/ Door Open 90°	39 ³ / ₁₆ in.	99.5cm
Weight	71.6 lbs.	32.4kg

ADDITIONAL SPECS

No. of Oven Racks	2
Oven Rack Composition	Nickel
No. of Knobs	2
Electronic Controls	Yes
Oven Capacity	2.47 Cu. Ft.
No. of Cooking Modes	4
Oven Cooking Type	Convection
Oven Cleaning Type	Standard
Oven Fuel Type	Electric
Oven Door Composition	Glass
Installable with Cooktop	Yes
Rated Voltage	240 Volts/60Hz
Amperage	10 Amps
Warranty Terms	1 Year
Certification	ETL

FEATURES:



GLASS DOOR

Premium glass composition allows for easy cleaning while providing a view inside.



ROTARY KNOBS

Stainless steel rotary knobs offer precision and elegance in the kitchen.



CONVECTION FAN

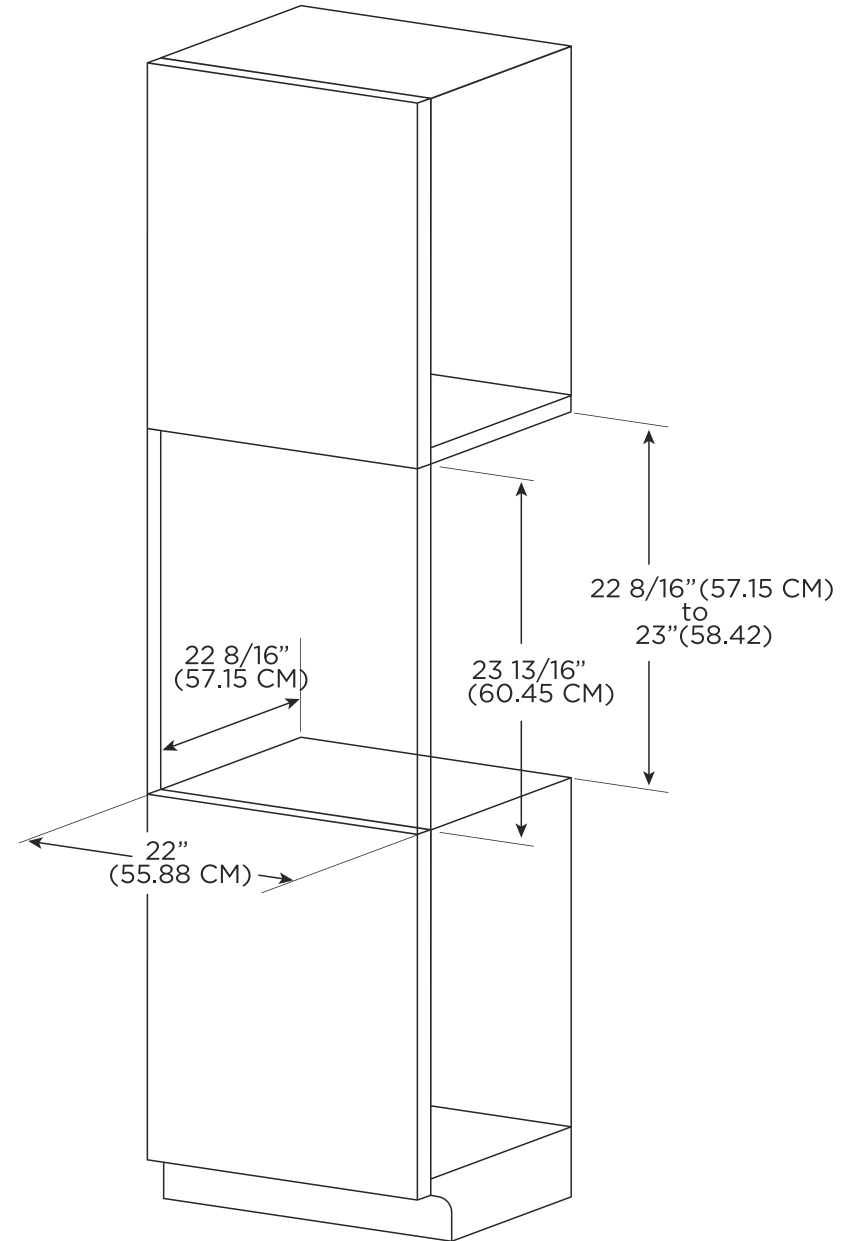
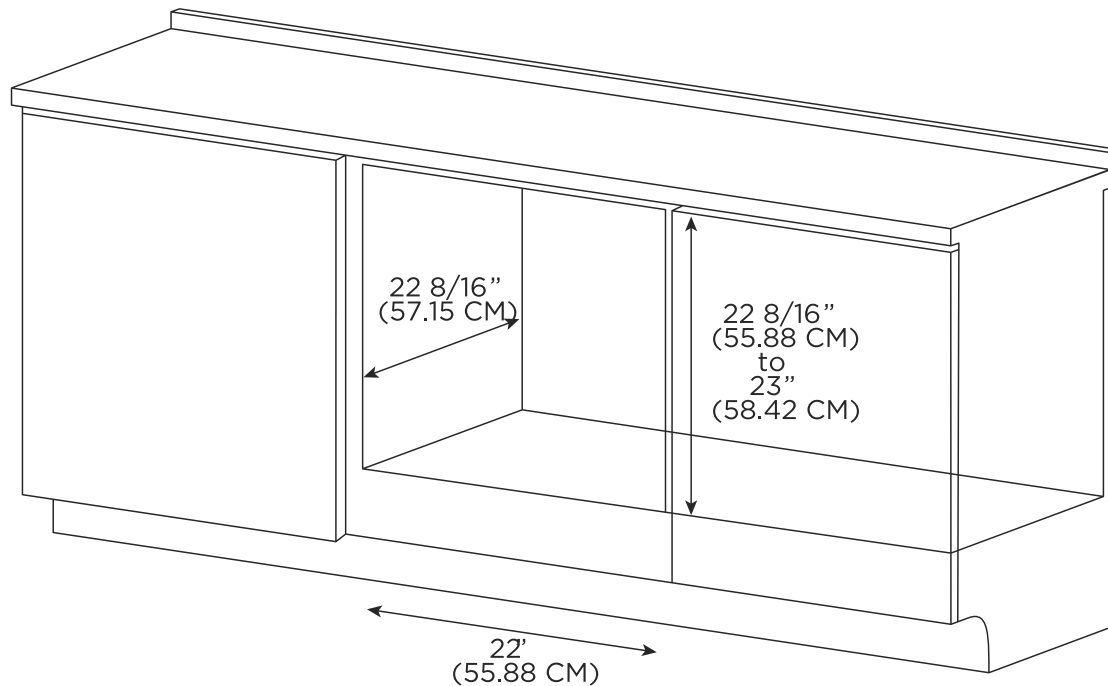
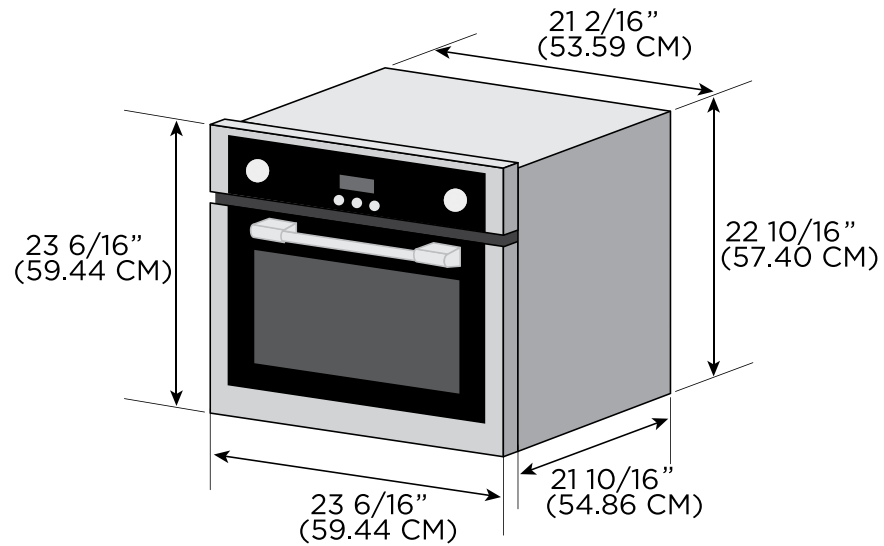
A powerful convection oven fan ensures even and consistent cooking for every meal.



4 COOKING MODES

Four unique programmable cooking modes deliver versatility in the kitchen.

INSTALLATION GUIDE



Spec sheets are subject to change without notice. For further questions and more detailed information, please visit www.forteappliances.com