

ASSEMBLY INSTRUCTIONS
COASTER FINE FURNITURE



Fine Furniture for every stage of life

704127
END TABLE

ITEM:704127

ASSEMBLY INSTRUCTIONS

ASSEMBLY TIPS:

1. Remove hardware from box and sort by size.
2. Please check to see that all hardware and parts are present prior to start of assembly.
3. Please follow attached instructions in the same sequence as numbered to assure fast & easy assembly.



WARNING!

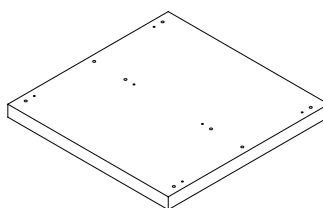
1. Don't attempt to repair or modify parts that are broken or defective. Please contact the store immediately.
2. This product is for home use only and not intended for commercial establishments.

ASSEMBLY TIME

30 MINUTES

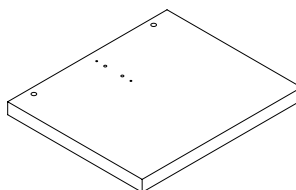
PARTS IDENTIFICATION

A TOP



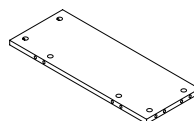
1 PC

B SIDE PANEL



2 PCS

C BACK PANEL



1 PC

HARDWARE IDENTIFICATION

Z

NO	DESCRIPTION	FIGURE	Q'TY	NO	DESCRIPTION	FIGURE	Q'TY
1	GLUE 15g		1 PC	4	CAM LOCK Ø15x12mm SR		10 PCS
2	WOODEN DOWEL Ø 8x30mm		12 PCS	5	PLASTIC FEET Ø15mm		4 PCS
3	CAM BOLT Ø7x35.5mm SR		10 PCS	6	STICKER Ø20mm		2 PCS

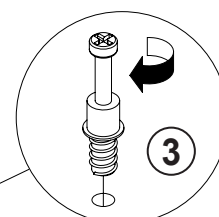
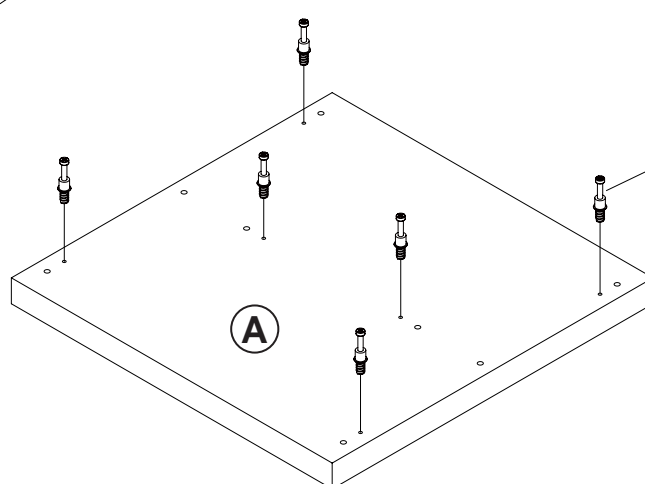
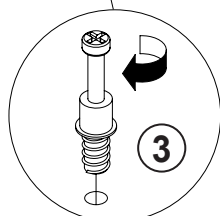
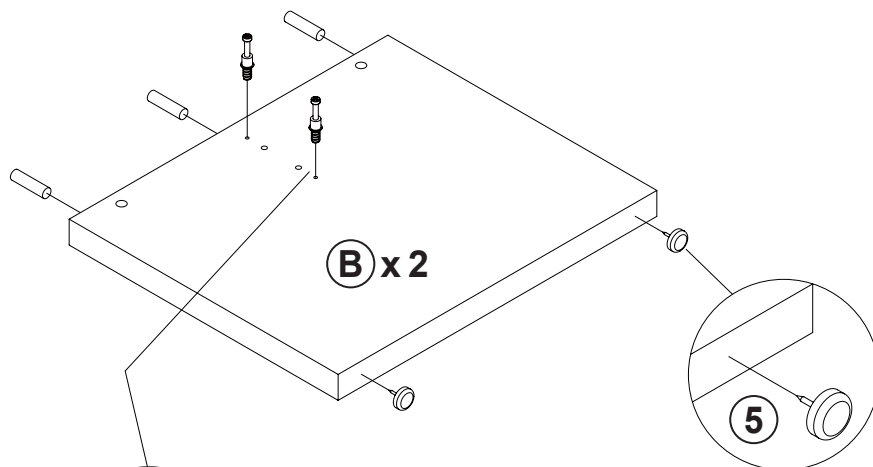
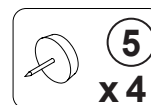
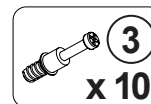
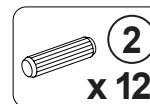
NOTE:

Phillips head screw driver is required in the assembly process; however, manufacturer does not provide this item.

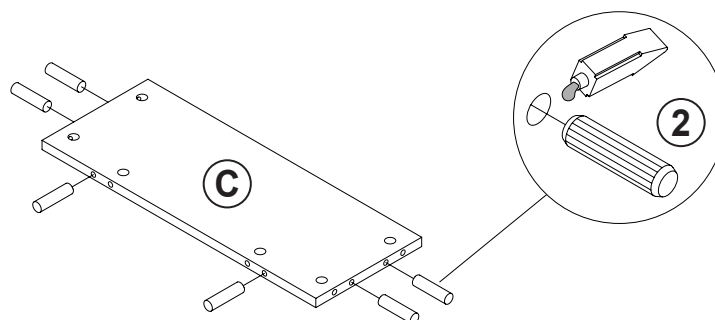
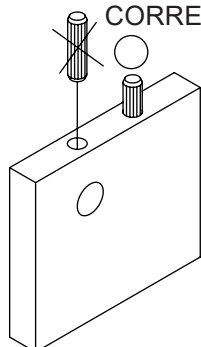
ITEM: **704127**

STEP 1

COASTER
FINE FURNITURE



INCORRECT
CORRECT

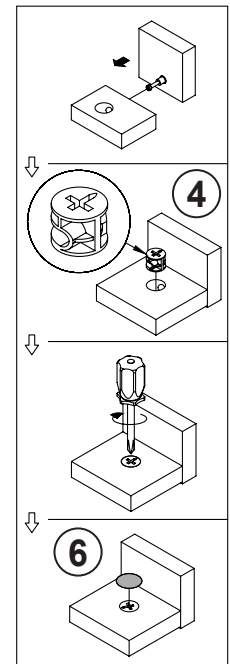
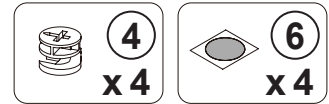
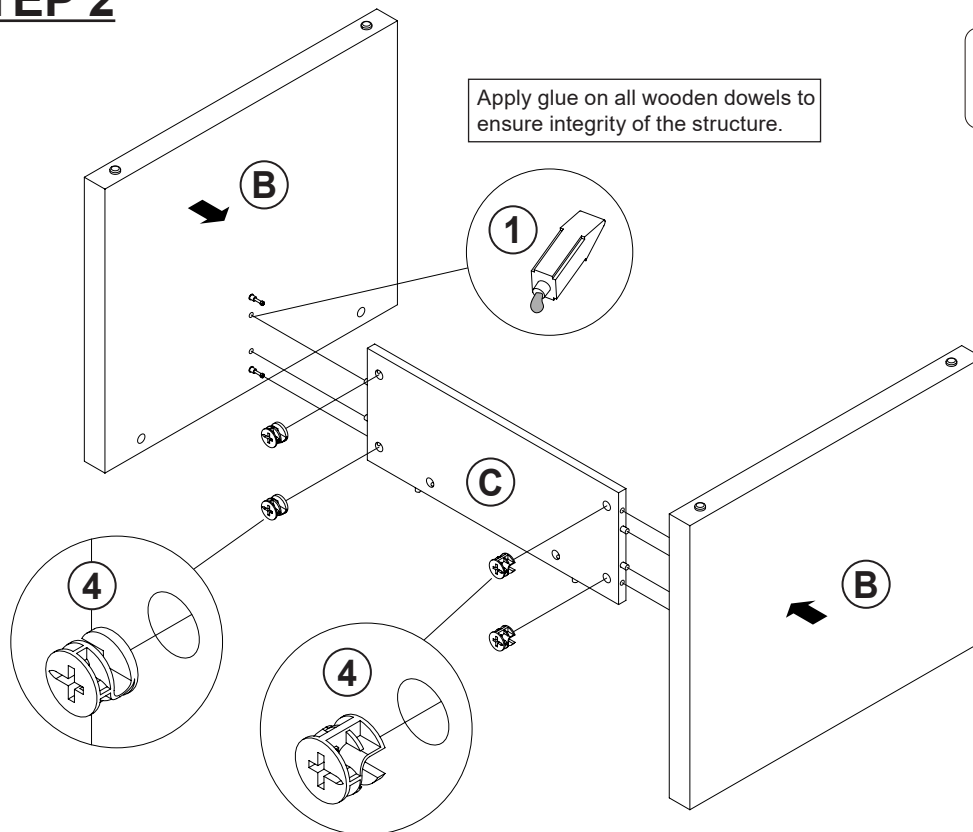


Apply glue on all wooden dowels to ensure integrity of the structure.

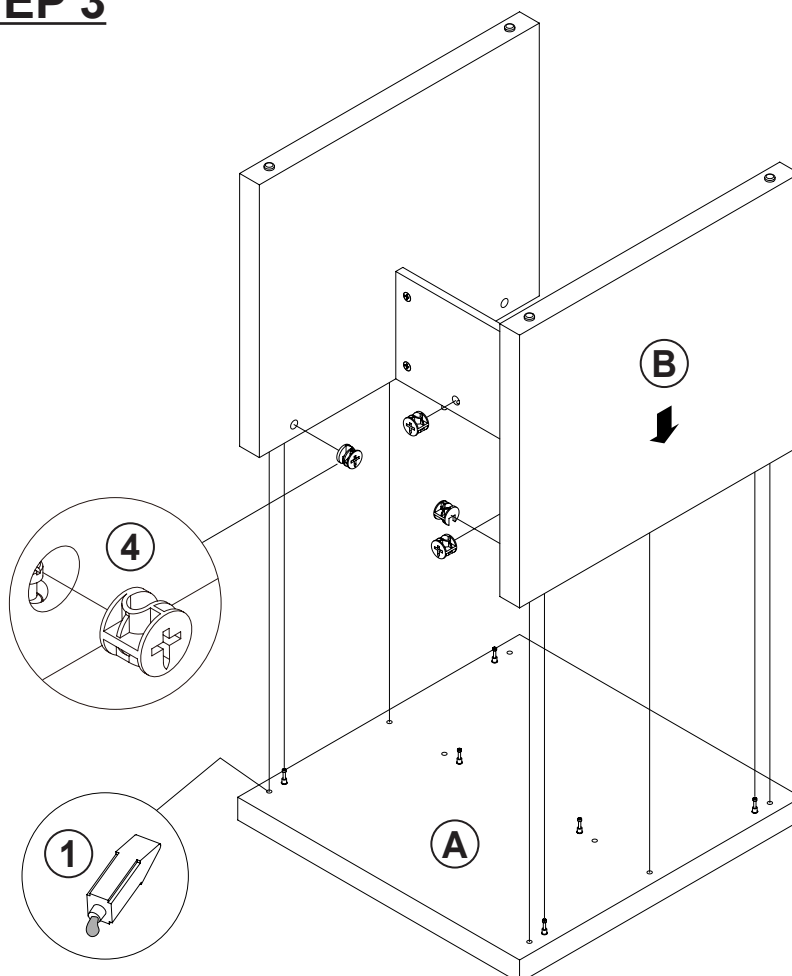
ITEM: 704127

STEP 2

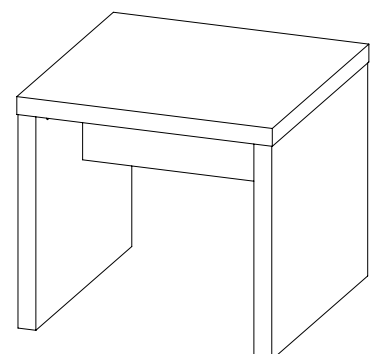
COASTER
FINE FURNITURE



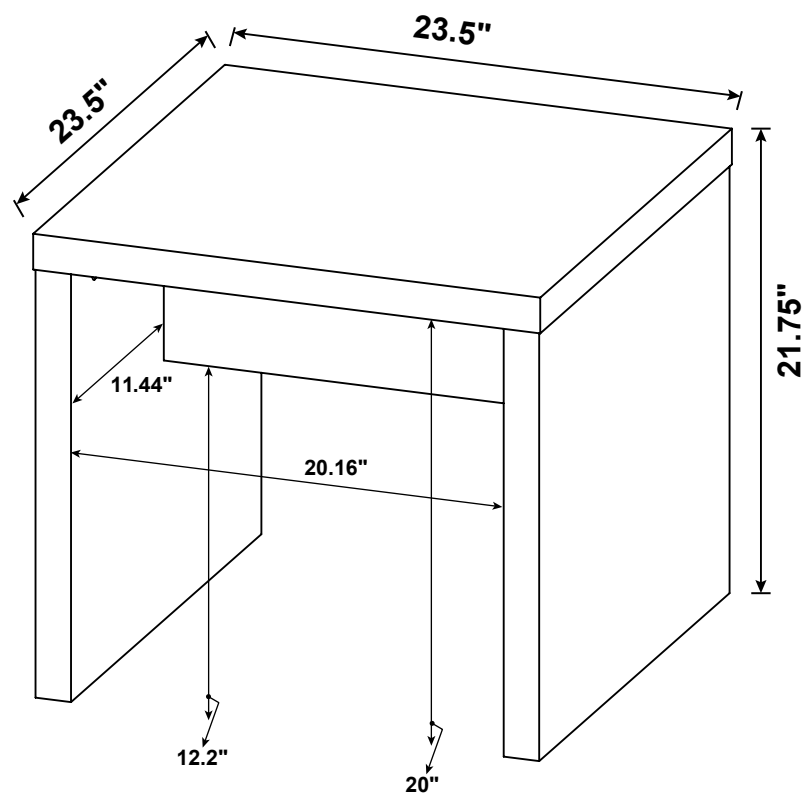
STEP 3



COMPLETE



ITEM: 704127



Note : Dimension tolerance $\pm 5\%$