



Inspired by Scandinavia



# Dishwashers

## 30 Series



### Auto Door Opening

Auto door opening to improve the drying performance. No more hand drying.



### Premium Flexiracks™ with full width top tray

Can hold 14 place settings. XXL: tallest interior tub on the market. Adjustable upper rack.



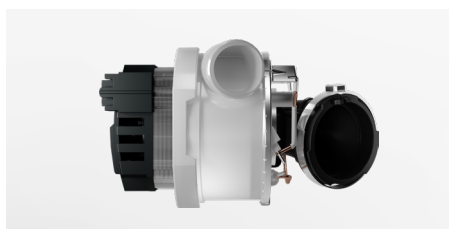
### 5 Steel™

Five of the most important parts are made of robust steel or high grade stainless steel. Designed to last for 20 years.



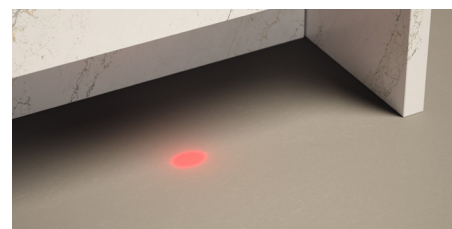
### 8 Spray™ Zones

Including 2 PowerZones for all kinds of dishes.



### Enjoy the power of silence - 42 dB(A)

Brushless motors.  
(40 dB(A) in Night Mode).



### Status Light™

Indicating the progress of the program.



### DBI563IXXLS

Pocket Handle  
Built-In, XXL  
Stainless Steel  
Interface: Logic



### DBI563IXXLW

Pocket Handle  
Built-In, XXL  
White  
Interface: Logic



### DFI563XXL

Pocket Handle  
Fully Integrated  
Panel Ready, XXL  
Interface: Logic



(Shown DFI563XXL)

## 30 Series Dishwasher

**Durable and sturdy steel racks:** Premium 3 level Flexiracks™, **Low noise level:** 42 db(A), (40 db(A) in Night mode), **Effective and fast drying:** Auto door opening, **Heavy duty design:** 5 Steel™ construction, **Superior cleaning performance:** 8 Spray™ system



### Features

- 5 Steel™ construction: stainless steel container, inner door, spray arms, strainers; nylon-coated steel racks
- Both circulation and drain pump have extra durable and quiet brushless motors
- Fully graphical FFSTN display
- XXL: Tallest interior tub in the market

### Performance

- Super Cleaning System™: Intensive rinsing that cleans the dishes and the machine before main wash
- Unique 8 Spray™ system, designed for reaching every corner of the dishwasher
- 2 PowerZones for all kinds of dishes
- Auto Door Opening for improved drying performance
- 20 years of domestic use (Quality test: 12,500 hours, 280 cycles per year)

### Programs / Options

- 8 programs: Normal, Auto, Intensive, Quick, Time, Sanitize, Rinse and Hold, Self-Cleaning
- Washing temperatures: 131 to 158°F
- 4 Modes: Normal, Speed, Night, Heat Boost
- 2 options: Automatic door opening, Delayed start (1-24 h)
- Auto Program

### Comfort / Safety

- Status Light™ indicating the progress of the program
- The Aqua Safe™ system guarantees protection against water leaks
- Easy installation: From front adjustable door springs (panel ready models) and rear foot (all models)

### Dimensions

- Appliance dimensions (H / W / D): XXL 32 3/16" - 35 1/16" / 23 15/16" / 27 7/8"
- Necessary space dimensions (H / W / D): XXL 32 1/4" / 24" / 22 1/16"
- Length of the power cable / Location: 59 1/16", 1500 mm / Back right
- Length of PEX inlet hose / Locknut dimensions\* / Location: 70 7/8", 1800 mm / 1", 25.4 mm / Back left
- Length of outlet hose / Outlet diameter / Location: 59 1/16", 1500 mm / 1 1/16", 18 mm / Back left
- Custom door length / Rotation point: XXL 28 1/8" / 24 13/16"

### Baskets and drawers

- Full width top tray
- Premium height adjustable upper rack
- Premium lower rack
- Cutlery basket

### Installation

- Consult the product installation manual for detailed dimensions

Measurements: inches / millimeters

Shown for built in stainless steel model, for panel ready model, please see <https://us.asko.com>

