

URBV415 - 15" BEVERAGE CENTER

THE SEAMLESS COLLECTION

U-LINE



DESIGN

Adjustable panel-ready grille designed to seamlessly blend into cabinetry, allowing for a continuous toe-kick design.

Black interiors with warm black accents.

Concealed, zero-clearance soft-close **articulating door hinge**.

Panel-ready integrated doors, customizable with your panel and hardware, or **choose from our accessory options**.

FEATURES

Built for both **indoor & outdoor use**, with condensation mitigation system.

Carbon filter for enhanced air quality and odor reduction.

Center cabinet vertical lighting: Complete illumination for full visibility throughout the entire interior.

Door alarm activates when the door is left open.

Effortless entry door: Minimizes the physical effort needed, enhancing ease of use for all family members.

Electronic touch control enables precise temperature selection from **34°F to 70°F**.

Evenly distributed forced-air refrigeration system delivers rapid cool down and temperature stability.

Field reversible door is shipped right-hand hinged.

Four leveling legs adjustable up to 1 inch.

Low-E coated, argon gas filled, double thermopane glass door provides protection from harmful UV light.

Low-profile variable speed compressor ensures efficient and powerful cooling with a max output of 1,850 BTU/h.

Multi-point LED lighting with **30 color choices**, including **BrightShield® antimicrobial protection**.

Sabbath Mode disables interior lights, alarms, and digital displays while maintaining consistent cooling performance.

STORAGE

2.8 cu. ft. capacity stores up to **9 wine bottles and 36 12-oz cans** or **6 wine bottles and 54 12-oz cans**.

18-point side adjustability for unparalleled interior versatility.

Two full-extension glass shelves and **two full-extension, durable wire wine racks**.

CAPACITY

Volume	2.8 cu. ft.
Cans (12 oz)	36 / 54
Wine Bottles (750 mL)	9 / 6

DIMENSIONS

Product Depth	22 11/16" (57.6 cm)
Product Height (Min.)	34 1/8" (86.7 cm)
Product Width	14 7/8" (37.8 cm)
Product Weight	105 lbs
Shipping Depth	31" (78.7 cm)
Shipping Height	37" (94 cm)
Shipping Width	19" (48.3 cm)
Shipping Weight	125 lbs

CUSTOM PANEL DIMENSIONS

Panel Height	30" (76.2 cm)
Panel Thickness	3/4" (1.9 cm)
Panel Width	14 15/16" (37.9 cm)
Panel Weight (Max.)	20 lbs
Panel Type	2 3/4" (7 cm) frame or solid panel

SUSTAINABILITY

Refrigerant Type	R600a
GWP (Global Warming Potential)	3 (very low)
ENERGY STAR	Yes

TECHNICAL DETAILS

Cord Length	6 ft.
Electrical Requirements	115V / 60 Hz / 15A

WARRANTY

2 year parts & labor warranty / 6 year sealed system parts warranty (see complete warranty for details).



URBV415 - 15" BEVERAGE CENTER

THE SEAMLESS COLLECTION

U-LINE

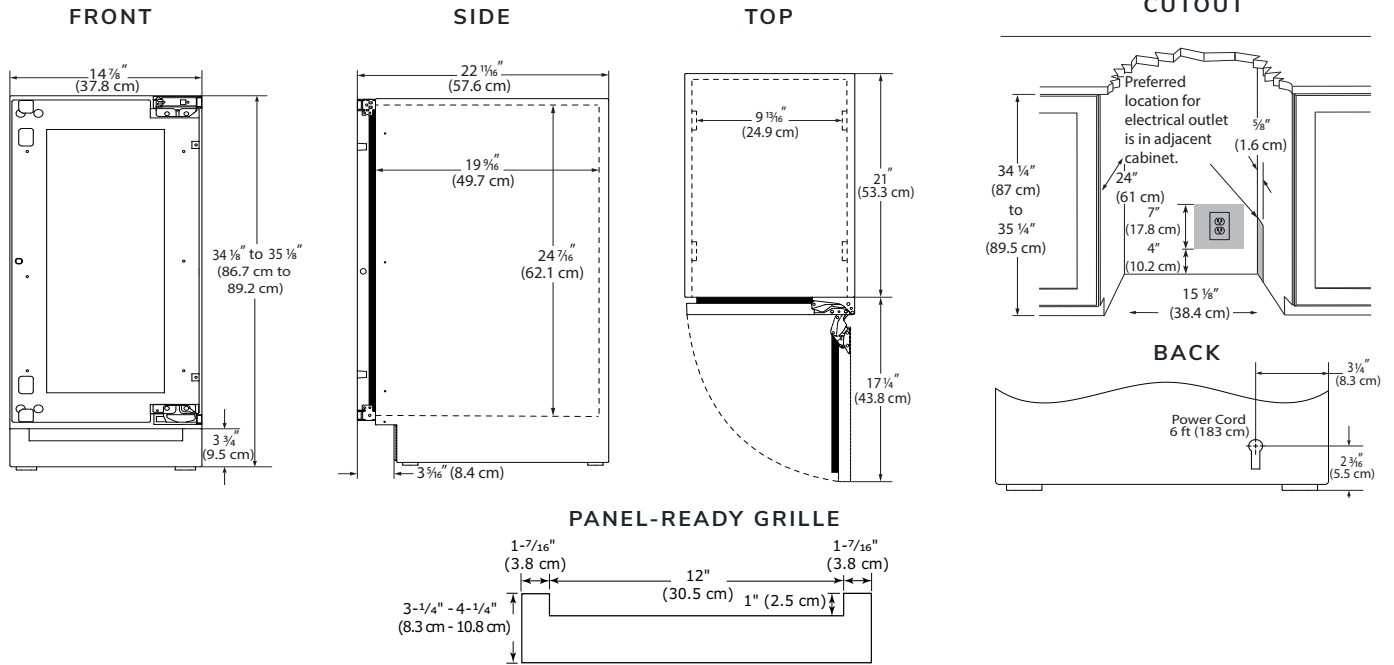
INSTALLATION

No additional clearance is needed for ventilation.

Do not obstruct front grille air flow.

Requires 3/4" custom panel and handle (not supplied by U-Line).

PRODUCT DIMENSIONS



MODELS



URBV415-IG01A
Integrated Frame Glass



URBV415-IS01A
Integrated Solid

ACCESSORIES



ULASBPGLOSS15 (Frame)
ULASBPSOLID15 (Solid)
Stainless Steel Door Wrap
with Classic Bar Pull