



1327-SECTPH in Leather 749-11



1327-SECTPH in Leather 749-11

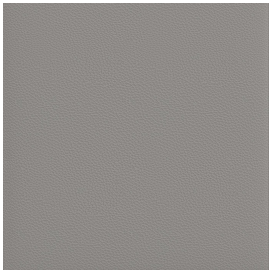
FLEXSTEEL®

© Flexsteel Industries, Inc. | Last Updated 07/23

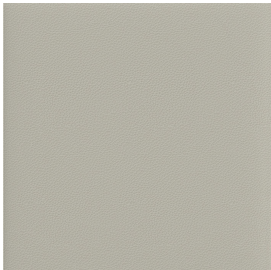
FEATURES		PRODUCT DIMENSIONS		SEAT			
SECTPH				Height	Width	Depth	Arm Height
●	Flexsteel Spring Unit DualFlex						
●	Back Construction Attached						
●	Seat Construction Attached						
●	Seat Cushion(s) High-Density (HC)						

- Standard
- Optional

Stocked Colors



Ash
749-01
Leather/Match



Coconut Milk
749-11
Leather/Match

Printed samples may vary from actual swatches. Please refer to swatches for actual color.

NOTES

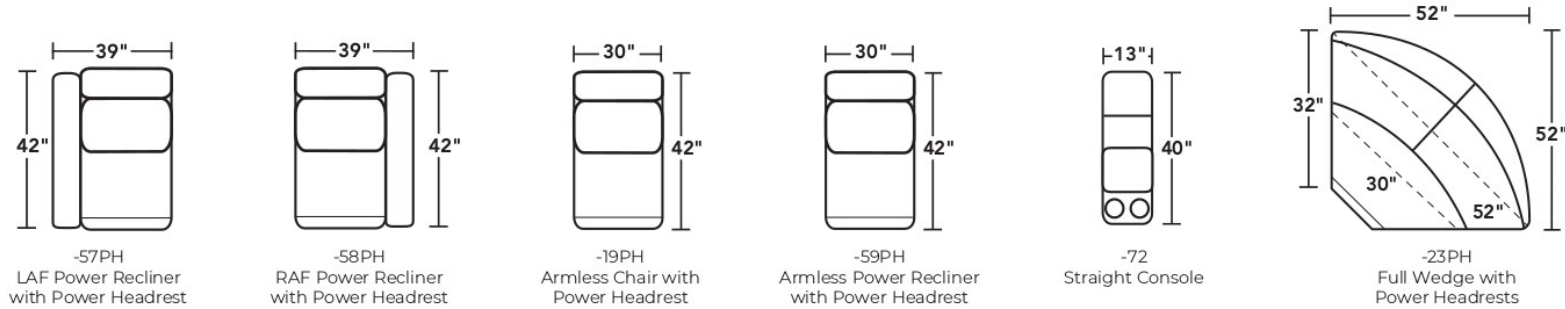
- Wide, flat seat provides spacious comfort
- Soft, wide contemporary track arms
- Low and modern profile headrest powers up when in use
- Low block wood leg is finished in a light, natural finish
- Available in two top grain leather color options that are durable for everyday use
- Zero Gravity recline puts you in the ideal position that reduces pressure and gives you a feeling of weightlessness
- Customize your comfort with a power control inside the arm that adjusts the headrest and recline independently
- A home button on the power control returns the headrest and footrest to their original positions with one touch
- USB-A and USB-C charging ports are built into power control for convenient charging and have zero draw technology to prevent the battery from draining when they're not in use
- Built to last with our patented Flexsteel DualFlex Spring System—sturdy steel ribbons attached to flexible coils that offer a wide range of motion and durability
- Power allows you to smoothly adjust the seat depths.
- A single USB port is included on each power button control on styles with arms.
- Power to the USB port is activated only when the port is in use.

1327 Aurora | Components & Configurations

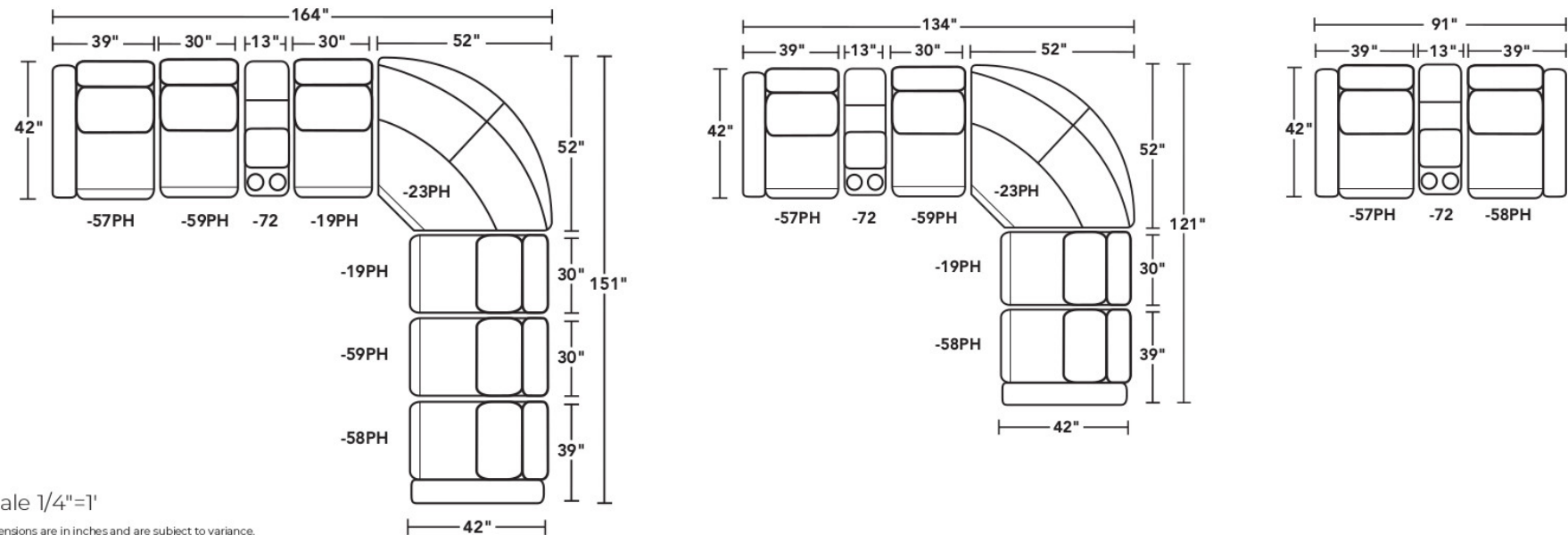
Sectional

Components

LAF = Left-Arm-Facing
RAF = Right-Arm-Facing



Sample Configurations



Scale 1/4"=1'

Dimensions are in inches and are subject to variance.
© Flexsteel Industries, Inc. 03/23
FLX-CP-FR-CC-1327

FLEXSTEEL®